

1960

Parrett Description

Being situated in Jefferson Township, Logan County, Ohio,
and being a part of V.M.S. 3327.

Beginning at the intersection of County Road #135 and
State Route #47; thence with State Route #47 N71°-47'E 425.0
feet to the place of beginning for this description.

Thence N8°-18'W 323.0 feet to a corner post.

Thence N81°-30'E 256.5 feet to an iron.

Thence S13°-06'E 275.0 to the center of State Route #47.

Thence with the center of State Route #47 S71°-47'W
284.0 feet to the place of beginning for this description.

Containing 1.85 acres more or less.

Surveyed off Glenn M. Parrett's 77.67 acre tract.

2825

1D

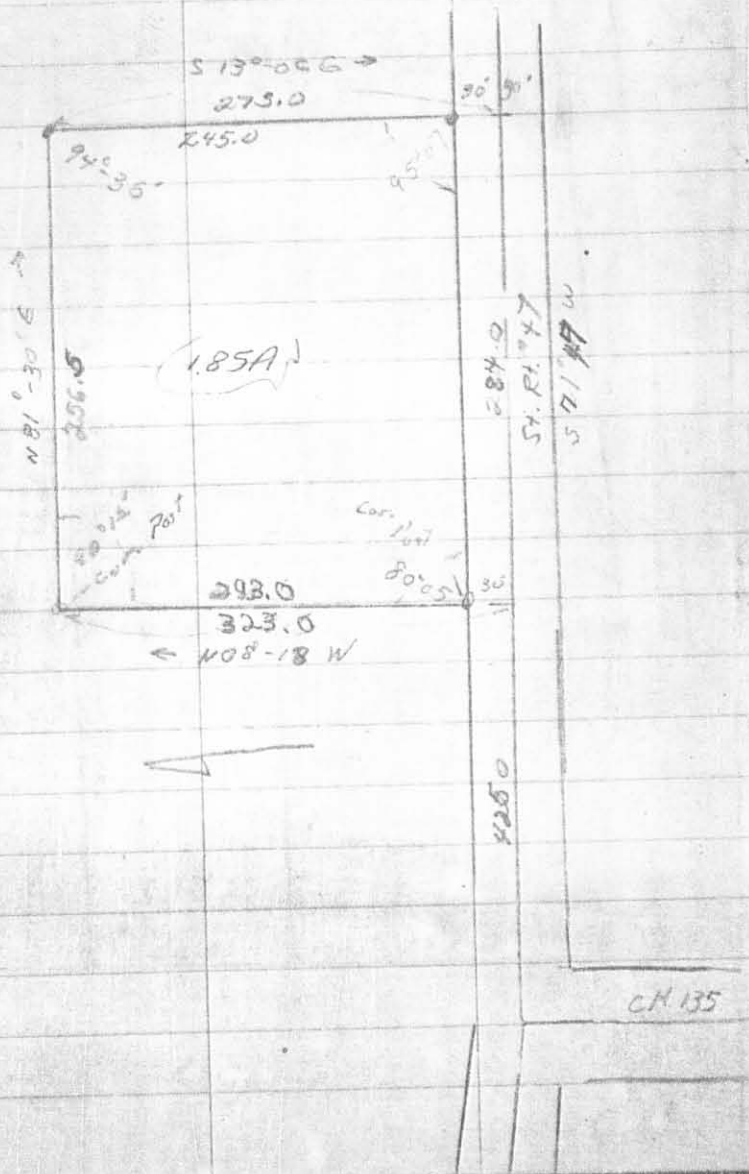
INDEXED ON MAP

Glenn M. Parrett et ux 77,57A
 V.M.S. 3327; Jeff. Twp.

May 14, 60

13

OKS #6



252
 257
 245
 294
 397
 292
 105

81-30
 20 18
 121-8
 15 16
 91-30
 91 20
 3 00

INDEXED ON MAP
 2825 1P