

Shick 1956

ERNEST R. KLINGELHOFER DESCRIPTION

Being situated in Jefferson Township, Logan County, Ohio; and being a part of V. M. S. #3139.

Beginning at a point in the center of what is known as Sta. 50 + 86 in the Logan County Engineers' F. B. 579; page 39. Thence with the center of C. H. #5 N 34° 08' E 912.8 feet to a point thence N 32° 42' E 12.2 feet to a point in the east line of V. M. S. #3139; thence with the east line of V. M. S. #3139 S 11° 23' E 1318.0 feet to a tall pointed stone with brick around it, passing through an iron in the south right of way of C. H. #5; thence N 56° 22' W 947.0 feet to the place of beginning.

Containing 10.00 acres more or less.

912.8  
- 12.2  
-----  
925.0

2838 1D

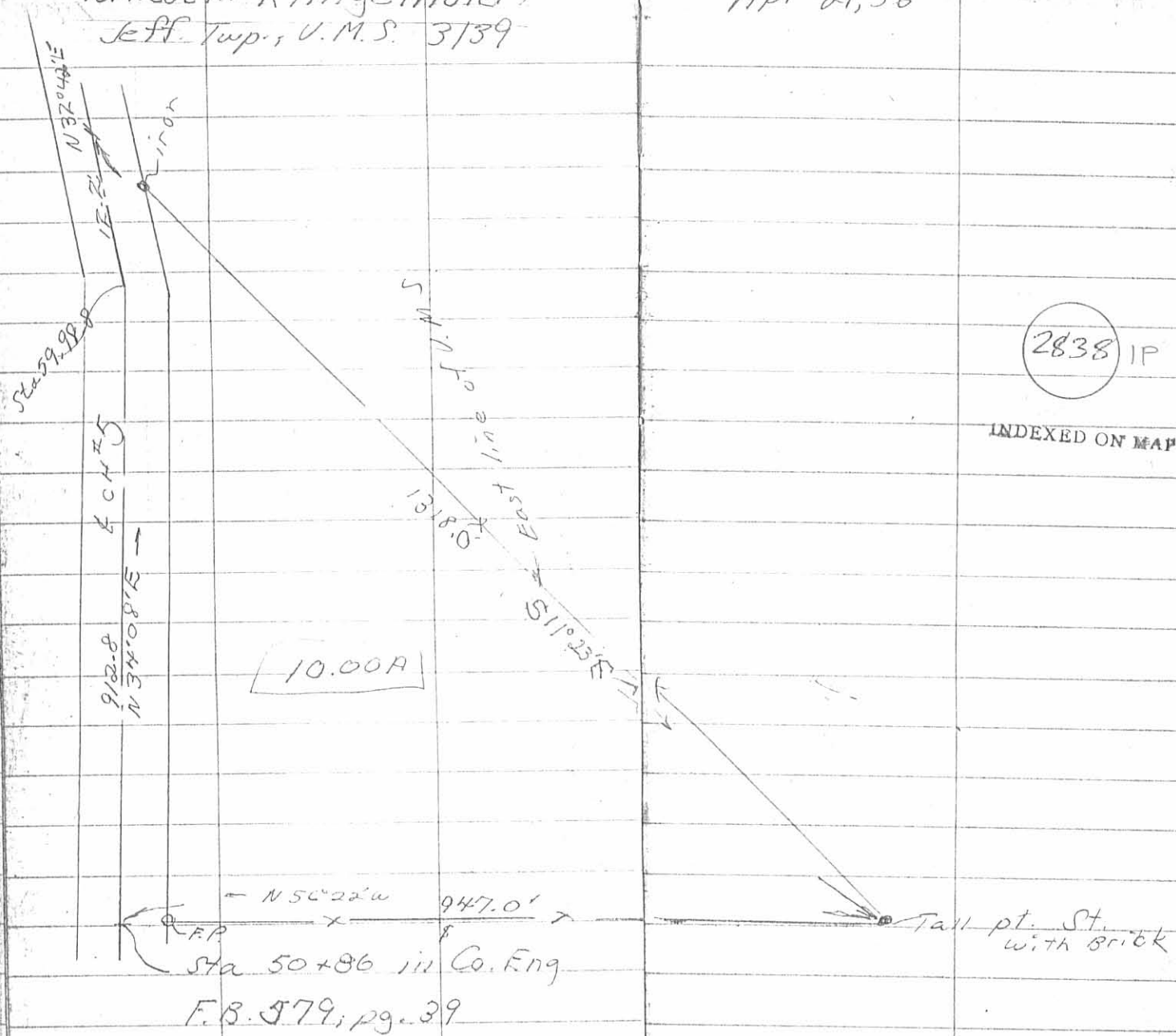
on Plat Book

INDEXED ON MAP

Ernest R. Klingelhoefer  
Jeff. Twp., U.M.S. 3139

Apr 21, 56

15



O.K. Shirk F.B. #3, Pg 15