

KINDELL SURVEY
V. M. S. 3320
JEFFERSON TOWNSHIP

November 14, 1959

The following described real estate situated in Jefferson Township, Logan County, Ohio and being part of Virginia Military Survey 3220 and more particularly described as follows:

Beginning at an iron pin in the center of County Highway No. 179, said pin being N. 6°-02'E. 864.1 feet from an iron pin at the intersection of centerlines of said County Highway No. 179 and County Highway No. 10; thence continuing with the centerline of said County Highway No. 179 N. 6°-02' E. 200.0 feet to an iron pin; thence S. 83°-58' E. 217.8 feet to an iron pin, passing an iron pin at 20.0 feet; thence S. 6°-02' W. 200 feet to an iron pin; thence N. 83°-58' W. 217.8 feet to the place of beginning, passing an iron pin at 197.8 feet.

Containing 1.00 acre more or less.

The above described tract being part of Robert J. Kindell's 73.92 acre tract.

2862 ID

INDEXED ON MAP

on Plat

Kindell Survey
V.M.S. 3220
Jefferson Township

C.H. # 179 - 40' wide

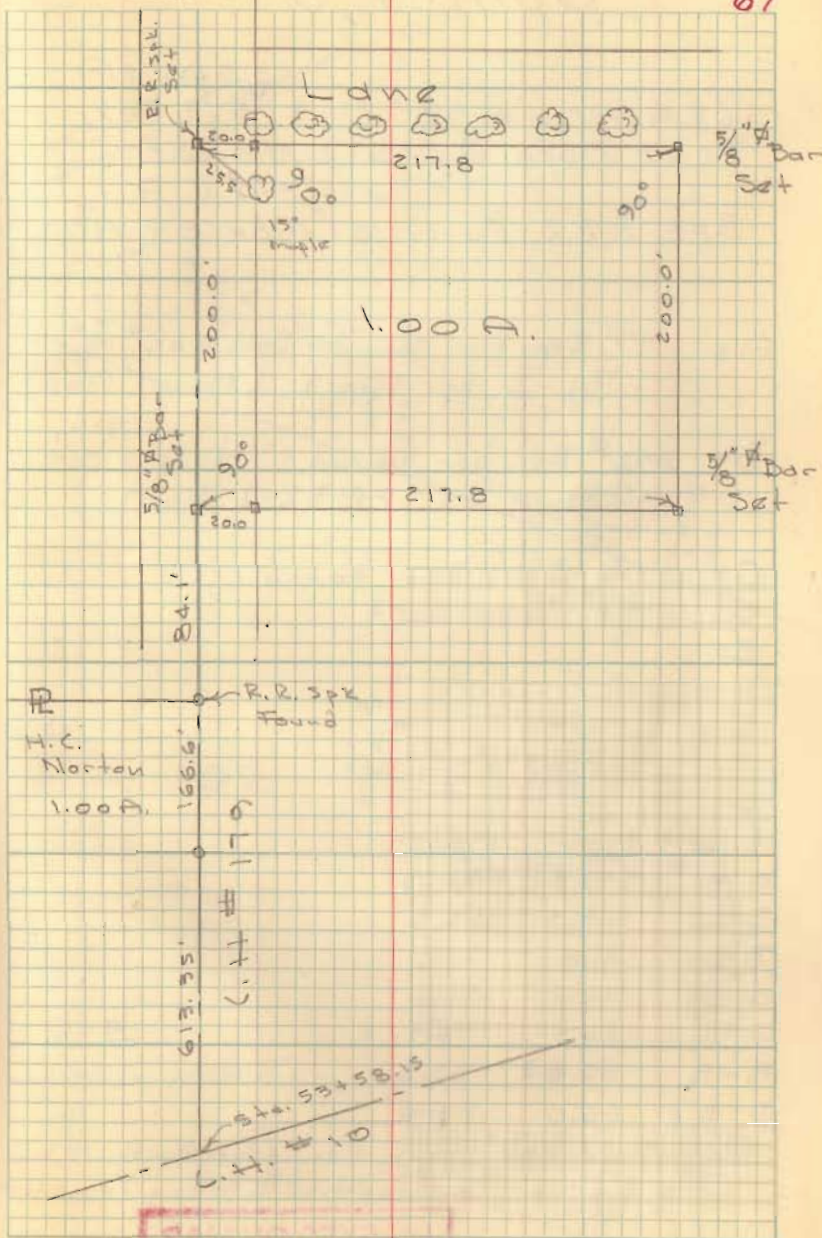
INDEXED ON MAP
2862

Dodson
Geos. Co.

Nov. 14, 1959

30°

67



INDEXED ON MAP
2862

Kindell Survey

U.M.S. 3220

Jefferson Twp

217.8

$\frac{20}{197.8}$

200

Δ 3560

400

356

200

1560

1400

1600

16

Bk 3 pg 67

613.35

166.6

$\frac{779.95}{780.0}$

780.0



89-60

6-02

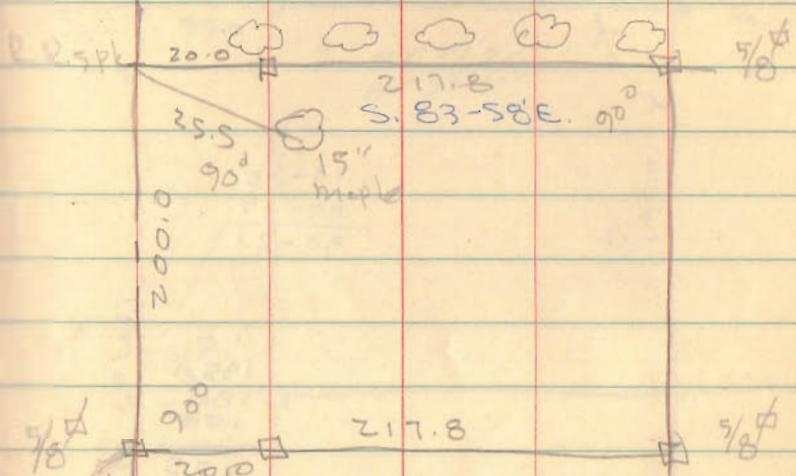
S 83-58 E

INDEXED ON MAP
2862

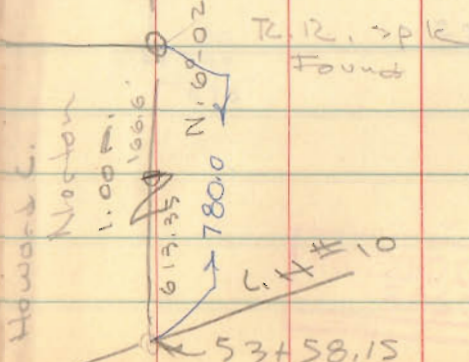
Adrian
Geolin

11/14/59

20' 49"



U. T. # 179
84.1



$\frac{780.0}{84.1}$
864.1

$\frac{217.8}{197.8}$
1.1