

Road 179 (Sta. 45+32 to 32+79)
 Jefferson Township V.M.S. 1498

Fence line for Sours 47.50A.
 Twp. Rd. 179 40' R/W.
 Twp. Rd. 181 40' R/W.

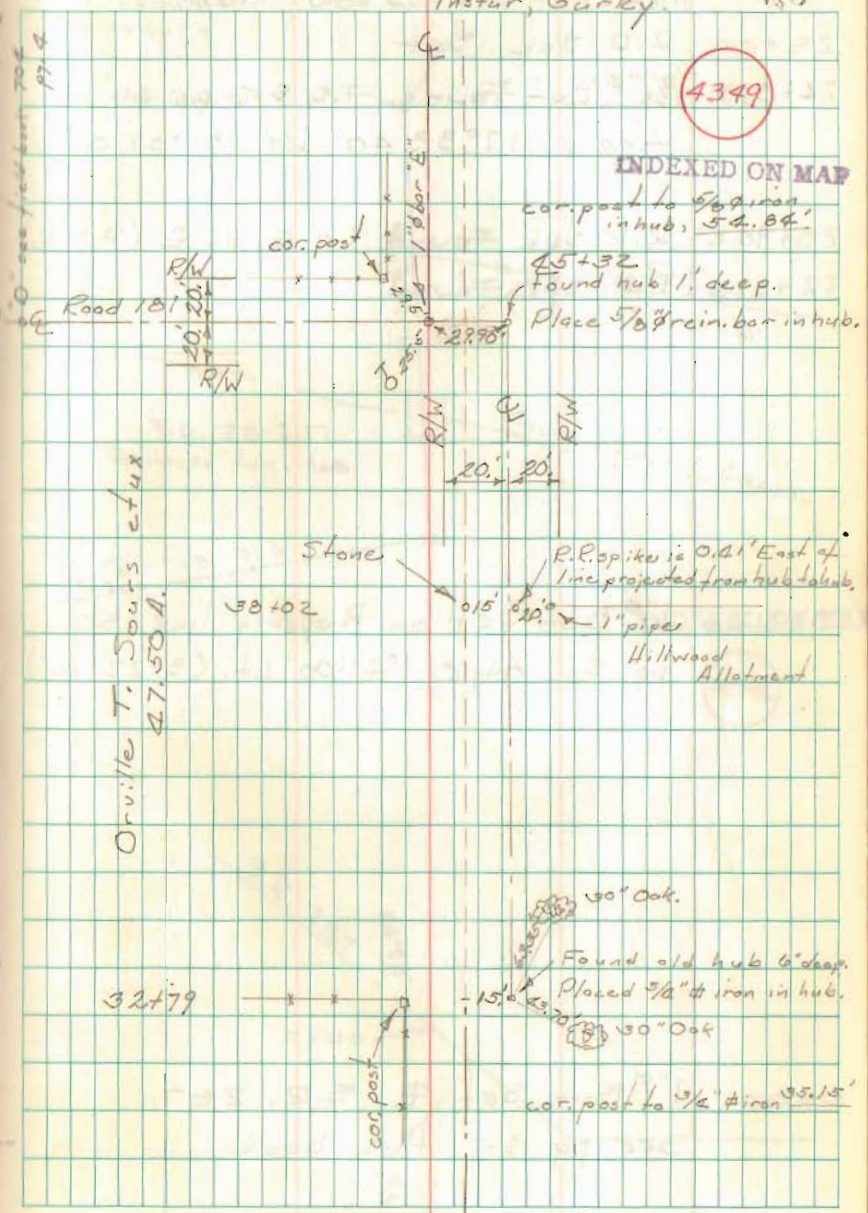
See Field Book 607 pages 48+49

Hillwood Allotment Plat K-98 1956

Road 179 55' R/W from Sta. 26+48.50
 to Sta. 32+78.50

C. Nichols
 C. Ricketts

22 p.m. + 23 a.m. April 1968
 p.m. warm + sunny
 a.m. clearing after rain, sunny
 Instur; Gurky



4349

INDEXED ON MAP

cor. post to 5/8" iron
 in hub, 54.84'

45+32
 Found hub 1' deep.

Place 5/8" rein. bar in hub.

R.P. spikes is 0.41' East of
 line projected from hub to hub.

Hillwood
 Allotment

30" Oak.

Found old hub 6" deep.
 Placed 5/8" iron in hub.

30" Oak

cor. post to 5/8" iron 35.15'