

Schooley/Wilson - Partnership
and
William H. Hughes Survey

August 6, 1969

The following described real estate being situated in the Townships of Jefferson and Monroe, County of Logan, State of Ohio and being a part of Virginia Military Survey No. 9592, 9618, 10075 and Virginia Military Survey No. 4497 and being more particularly described as follows:

Beginning at an iron bar in the center line of C. H. No. 28 (Macacheek and Pickrelltown Pike) and being Station 186 + 51.3 as shown in Logan County Engineer's Field Book No. 706 Page 45 (June 24, 1968) said iron bar being the northeast corner to James D. Park's present 58.31 Acre tract in V.M.S. No. 4497;

Thence with the center line of C. H. No. 28, N. 14° 00' W. 932.8 feet to an iron bar, being Station 195 + 84.09, passing through an iron bar marking the line between Monroe & Jefferson Townships at Station 195 + 80.59;

Thence continuing with the center line of C. H. No. 28, N. 5° 53' 20" E. 413.9 feet to a stone, being Station 199 + 98.0;

Thence continuing with the center line of C. H. No. 28, N. 5° 52' E. 142.1 feet to an iron bar, southeast corner to Wendall W. Lockwood's present 12.00 Acre tract and being Station 201 + 40.1;

Thence with Lockwood's south line, S. 76° 37' W. 2132.6 feet to a stone near a large wood post in the east Corporation Line of Valley Hi and also being the east line of V.M.S. No. 3138, passing the line between Jefferson & Monroe Townships at 1645.8 feet;

Thence with the east line of V.M.S. No. 3138 and said Corporation Line, S. 6° 37' W. 361.3 feet to a stone next to a large wood corner post, said stone being the southeast corner to V.M.S. No. 3138 and said Corporation Line;

Thence continuing with said Corporation Line and the south line of V.M.S. No. 3138, N. 68° 43' W. 2611.0 feet to an iron pipe next to a wood post, also being the northeast corner to V.M.S. No. 4957 and a corner to said Corporation Line, said line passing a corner to V.M.S. No. 9592, 9618, 10075 at 1060.0 feet, plus or minus (Note: No evidence of this corner exists on the ground);

Thence continuing with said Corporation Line and the east line of

INDEXED ON MAP

4554

10-1

V.M.S. No. 4957, S. $56^{\circ} 11'$ W. 1541.0 to a wood corner post, the most southerly corner to Valley Hi Corporation, and being a corner to J. Eugene Stoner's present 48.05 Acre tract in V.M.S. No. 9592, 9618, 10075;

Thence with Stoner's line, S. $37^{\circ} 09'$ E. 835.0 feet to a wood corner post, corner to Harold Heilman's present 52.06 Acre tract;

Thence with Heilman's northe line, N. $75^{\circ} 23'$ E. 1987.0 to a wood corner post in the east line of V.M.S. No. 9592, 9618, 10075, also being the northeast corner to Heilman's 52.06 Acre tract and in the west line of V.M.S. No. 4497;

Thence with said V.M.S. line, S. $20^{\circ} 37'$ E. 1254.0 feet to a pointed Boulder Sandstone near a wood post, corner to V.M.S. No. 3242 and V.M.S. No. 9592, 9618, 10075 and also being the southeast corner to Heilman's 52.06 Acre tract;

Thence N. $73^{\circ} 23'$ E. 185.0 feet to a wood post, a corner to Heilman's present 43.60 Acre tract in V.M.S. No. 4497;

Thence with one of Heilman's lines, S. $16^{\circ} 37'$ E. 952.0 feet to a wood post, a corner to Heilman's 43.60 Acre tract;

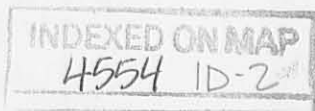
Thence with another of Heilman's lines, N. $74^{\circ} 53'$ E. 1477.0 feet to a wood post in James D. Park's present 58.31 Acre tract and northeast corner to Heilman's 43.60 Acre tract;

Thence with Park's west line, N. $15^{\circ} 07'$ W. 858.0 feet to a wood post, northwest corner to Park's 58.31 Acre tract;

Thence with Park's north line, N. $75^{\circ} 23'$ E. 1511.00 feet to the place of beginning, containing 195.98 Acres, more or less.

Of the above described tract, there is 52.06 Acres in V.M.S. No. 9592, 9618, 10075 - Monroe Township and 143.92 Acres in V.M.S. No. 4497 - Jefferson & Monroe Townships. Of the 143.92 Acres in V.M.S. No. 4497, there is 9.92 Acres in Jefferson Township and 134.00 Acres in Monroe Township.

I hereby certify that this is a true and accurate description of a survey made by me on June 7, 1969 and July 12, 1969.



Daniel E. Gilbert
Daniel E. Gilbert, P.S.
Reg. Sur. No. 5402
428 N. Madriver St.
Bellefontaine, Ohio 43311

VILLAGE OF VALLEY HI



SCHOOLEY/WILSON & HUGHES SURVEY
 V.M.S. 4497 & V.M.S. 9592, 9618, 10075
 JEFFERSON - MONROE TOWNSHIPS
 LOGAN COUNTY, OHIO
 JUNE - JULY 1969

SCALE: 1" = 400'

SURVEYED AND PLATTED BY:
 DANIEL E. GILBERT, P.S.
 REG. SUR. No. 5402
 428 N. MADRIVER ST.
 BELLEFONTAINE, OHIO 43311

3-12-15

Lee Surveying and Mapping Co., Inc.



Land Surveys • Topography • Subdivisions • Construction Layout

117 N. Madriver St.
Bellefontaine OH 43311



Phone: (937) 593-7335
Fax: (937) 593-7444
surveys@lsminc.us

MILLER 1.582 ACRES

Lying in Virginia Military Survey 4497, Jefferson and Monroe Townships, Logan County, Ohio.

Being out of the Don K. Miller and Virginia Miller and Timothy I. Miller and Lynn E. Miller 195.98 acre tract as deeded and described in Official Record 353, Page 906 of the Logan County Records of Deeds and being more particularly described as follows:

Beginning on a 1 inch iron bar found on the intersection of the center-line of County Highway 28 (Station 195+80.59, Logan County Engineer's Filed Book 706, Page 45) and the south line of Jefferson Township and the north line of Monroe Township.

THENCE, with the center-line of County Highway 28 (60 feet wide), S 14°-00'-00"E, a distance of 170.68 feet to a MAG nail set.

THENCE, S 76°-03'-30"W, a distance of 370.54 feet to a 5/8 inch iron rod set, passing a 5/8 inch iron rod set at 30.00 feet.

THENCE, N 14°-40'-44"W, a distance of 187.00 feet to a 5/8 inch iron rod set.

THENCE, N 76°-33'-47"E, a distance of 376.27 feet to a MAG nail set on the center-line of County Highway 28, passing a 5/8 inch iron rod set at 344.48 feet.

THENCE, with the center-line of County Highway 28, the following two courses:

S 05°-53'-06"W, a distance of 10.28 feet to a 1 inch iron bar found (Station 195+84.09).

S 14°-00'-00"E, a distance of 3.32 feet to the point of beginning

Containing 1.582 acres, of which 0.127 acre is within the highway right-of-way. There is 0.006 acre within Jefferson Township and 1.576 acres within Monroe Township.

Property is subject to any and all previous easements and rights-of-way of record.

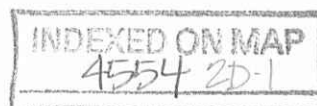
The basis for bearings is the center-line of County Highway 28 between Station 190+00 and Station 195+84.09, being N 14°-00'-00"W, and all other bearings are from angles and distances measured in a field survey by Lee Surveying and Mapping Co., Inc. on March 10, 2015.



Description prepared by:

William K. Bruce

William K. Bruce
Professional Surveyor 7437
March 10, 2015



58820315

Lee Surveying and Mapping Co., Inc.



Land Surveys • Topography • Subdivisions • Construction Layout

117 N. Madriver St.
Bellefontaine OH 43311



Phone: (937) 593-7335
Fax: (937) 593-7444
surveys@lsminc.us

MILLER 20.00 FEET WIDE INGRESS/EGRESS EASEMENT

Lying in Virginia Military Survey 4497, Monroe Township, Logan County, Ohio.

Being a 20.00 feet wide ingress/egress easement over a portion of the Don K. Miller and Virginia Miller and Timothy I. Miller and Lynn E. Miller 195.98 acre tract as deeded and described in Official Record 353, Page 906 of the Logan County Records of Deeds and being more particularly described as follows:

Commencing on a 1 inch iron bar found on the intersection of the center-line of County Highway 28 (Station 195+80.59, Logan County Engineer's Field Book 706, Page 45) and the south line of Jefferson Township and the north line of Monroe Township.

THENCE, with the center-line of County Highway 28 (60 feet wide), S 14°-00'-00"E, a distance of 52.54 feet to a point.

THENCE, within the right-of-way of County Highway 28, S 79°-12'-24"W, a distance of 30.05 feet to a point on the west right-of-way of County Highway 28 at the TRUE POINT OF BEGINNING.

THENCE, with the center-line of the 20.00 feet wide ingress/egress easement, the following four courses:

S 79°-12'-24"W, a distance of 14.60 feet to a point.

N 80°-56'-35"W, a distance of 82.05 feet to a point.

S 85°-51'-49"W, a distance of 59.39 feet to a point.


S 75°-21'-41"W, a distance of 193.86 feet to a point at the terminus of said easement. Said point referenced by a 5/8 inch iron rod set bearing N 14°-40'-44"W, a distance of 26.59 feet.

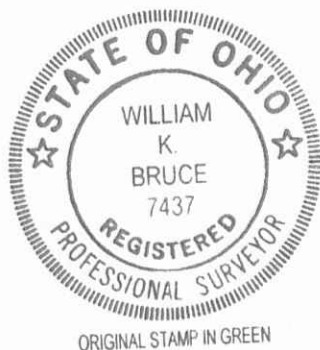
Property is subject to any and all previous easements and rights-of-way of record.

The sidelines of said easement to be shortened or prolonged to meet at angle point intersections.

The basis for bearings is the center-line of County Highway 28 between Station 190+00 and Station 195+84.09, being N 14°-00'-00"W, and all other bearings are from angles and distances measured in a field survey by Lee Surveying and Mapping Co., Inc. on March 10, 2015.

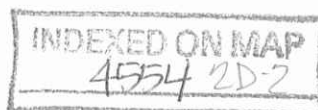
Description prepared by:


William K. Bruce
Professional Surveyor 7437
March 10, 2015



ORIGINAL STAMP IN GREEN

58820315

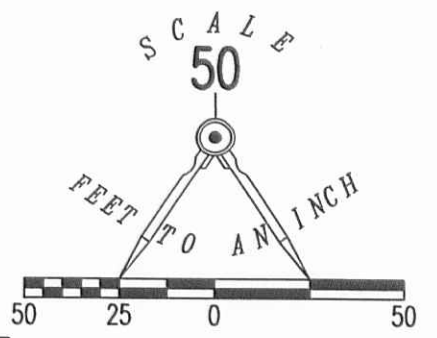
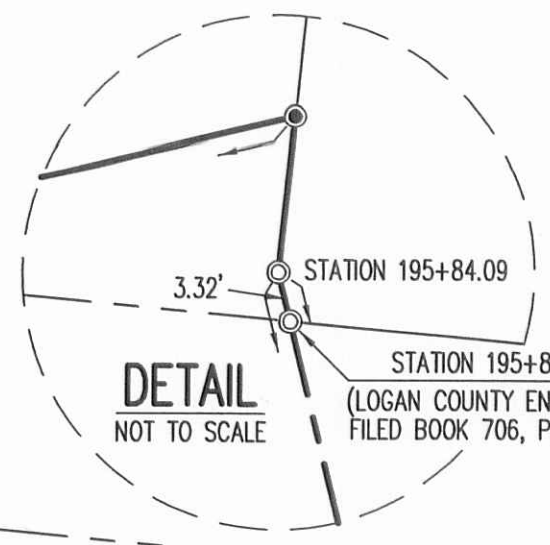
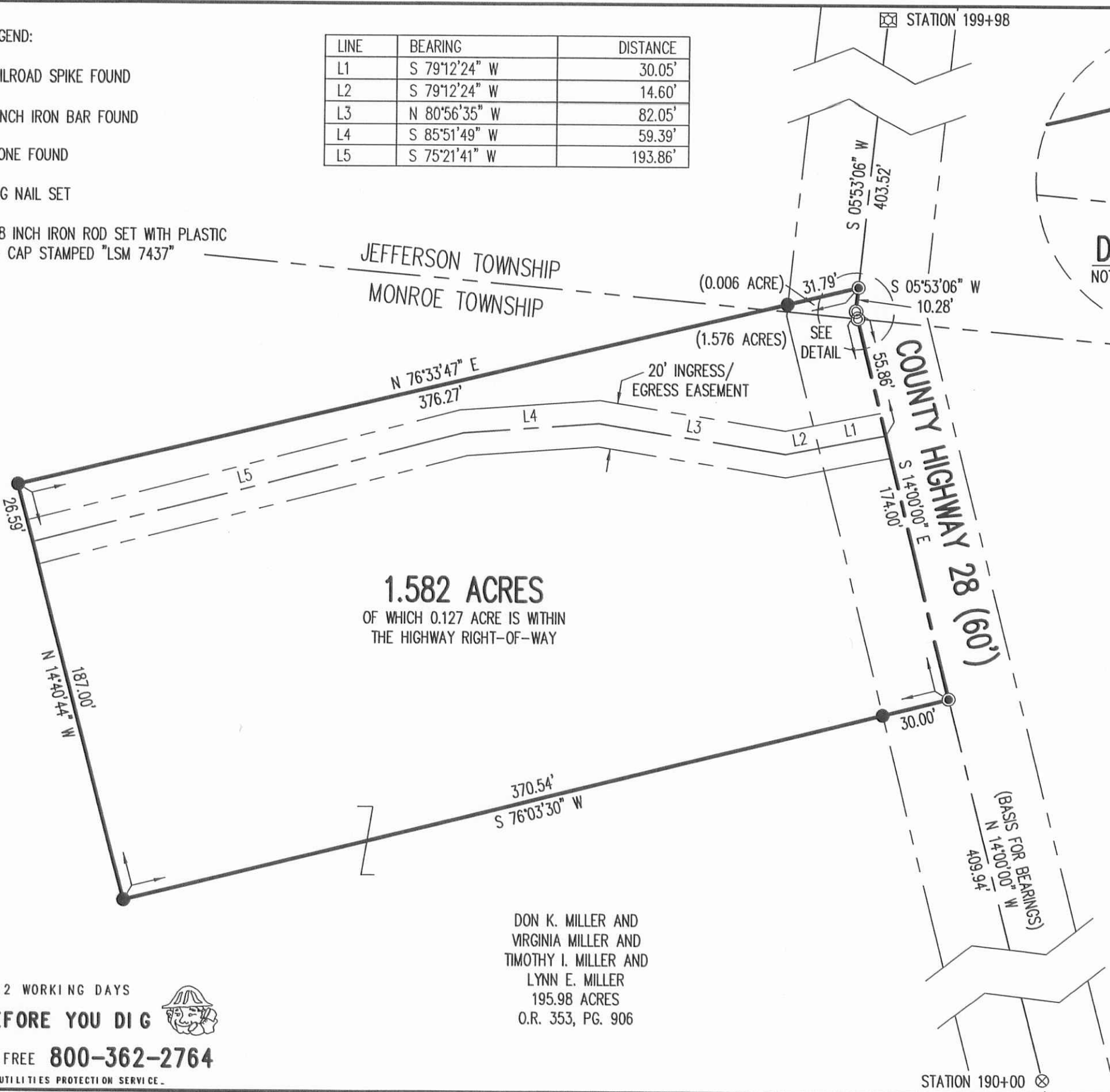


3-12-15

APPROVED

- LEGEND:
- ⊗ RAILROAD SPIKE FOUND
 - ⊙ 1 INCH IRON BAR FOUND
 - ⊠ STONE FOUND
 - MAG NAIL SET
 - 5/8 INCH IRON ROD SET WITH PLASTIC I.D. CAP STAMPED "LSM 7437"

LINE	BEARING	DISTANCE
L1	S 79°12'24" W	30.05'
L2	S 79°12'24" W	14.60'
L3	N 80°56'35" W	82.05'
L4	S 85°51'49" W	59.39'
L5	S 75°21'41" W	193.86'



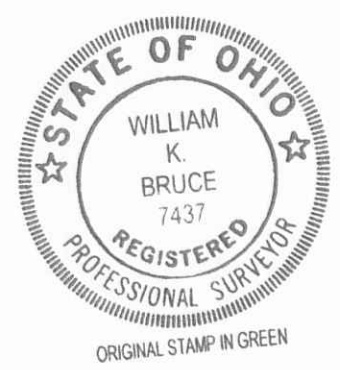
1.582 ACRES
OF WHICH 0.127 ACRE IS WITHIN
THE HIGHWAY RIGHT-OF-WAY

DON K. MILLER AND
VIRGINIA MILLER AND
TIMOTHY I. MILLER AND
LYNN E. MILLER
195.98 ACRES
O.R. 353, PG. 906

**SURVEY OF 1.582 ACRES OUT OF THE
DON K. MILLER AND
VIRGINIA MILLER AND
TIMOTHY I. MILLER AND
LYNN E. MILLER
195.98 ACRE TRACT
OFFICIAL RECORD 353, PAGE 906
VIRGINIA MILITARY SURVEY 4497
JEFFERSON AND MONROE TOWNSHIPS
LOGAN COUNTY, OHIO**

SURVEYED BY:

William K. Bruce
WILLIAM K. BRUCE
PROFESSIONAL SURVEYOR 7437
MARCH 10, 2015



COPYRIGHT 2015 BY:
LEE SURVEYING & MAPPING CO., INC.
117 North Madriver Street
BELLEFONTAINE, OHIO 43311
(937) 593-7335
WWW.LSMINC.US
surveys@lsminc.us
KSS D0315 58820315 L-5882-3

2 WORKING DAYS
BEFORE YOU DIG
CALL TOLL FREE **800-362-2764**
OHIO UTILITIES PROTECTION SERVICE

INDEXED ON MAP
4554 2P