

# Lee Surveying and Mapping Co.



Farm Surveys • Lot Surveys • Topography • Subdivisions • Construction Layout

855 EAST SANDUSKY AVENUE  
BELLEFONTAINE, OHIO 43311

(513) 593-5780

CLAYTON M. LEE, P.S.  
JEFFREY I. LEE, P.S.

## RICHARD AMERINE SURVEY

Lying in V.M.S. 3437, Jefferson Township, Logan County, Ohio and being out of that 88.12 acres deeded and described in Volume 219, Page 489 of the Logan County Records of Deeds and more particularly described as follows:

Beginning at an iron spike set in the center-line of State Route No. 533 a distance of 777.9 feet southerly from the northeast corner of the grantor's property and designated in the State Highway records as being Station 132+74.1.

THENCE, with the center-line of State Route 533, S 6°-59' E, a distance of 361.50 feet to an iron spike. (Station 129+12.6).

THENCE, S 75°-01' W, a distance of 394.90 feet to an iron rod, passing an iron rod set in the highway right-of-way line at 30.29 feet.

THENCE, parallel to the highway, N 6°-59' W, a distance of 306.79 feet to an iron rod.

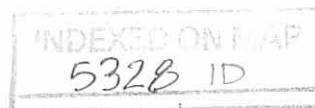
THENCE, N 67°-21' E, a distance of 406.15 feet to the point of beginning, passing an iron rod set in the highway right-of-way line at 374.99 feet. Containing 3.00 acres.

Last previous deed reference: Volume 219, Page 489.

Prepared by:

*Clayton M. Lee*

Clayton M. Lee  
Reg. Surveyor No. 6181  
7-8-78





SCALE 1" = 60'

RAYMOND W. AMERINE  
88.12 AC.  
Vol. 219, Pg. 489

North Prop. Line Sta. 140+52

I. Bar fnd  
Sta. 135+00

I. Rod set

31.16'

STA. 132+74.1

I. Spike set

361.50'

S 6°-59' E

N. Prop. Line

406.15'  
N 67°-21' E

I. Rod set

306.79'  
N 6°-59' W

3.00 ACRES

S 75°-01' W  
394.90'

I. Rod set

I. Rod set 30.29'

STA. 129+12.60

S.R. 533

I. Spike set

Iron rod fnd  
Sta. 117+49.5  
6.40' Lt.

5328 IP

INDEXED ON MAP



SURVEY OF 3.00 ACRES  
OUT OF 88.12 AC. TRACT  
(Vol. 219, Pg. 489)  
PART OF V.M.S. 3437  
JEFFERSON TWP.  
LOGAN COUNTY, OHIO  
6-28-1978

SURVEYED BY:

*Jeffrey I. Lee*

Jeffrey I. Lee  
Reg. Surveyor 6359

Lee Surveying & Mapping Co.  
855 E. Sandusky Ave.  
BELLEFONTAINE, OHIO 43311  
(513) 593-5780

Ref. Logan Co. Engr. F.B. 579, Pg. 43 & 44

1 REC 1D 4-26-11 SMM OK

# Lee Surveying and Mapping Co., Inc.

Land Surveys • Topography • Subdivisions • Construction Layout

117 N. Madriver St.  
Bellefontaine OH 43311



Phone: (937) 593-7335  
Fax: (937) 593-7444  
surveys@lsminc.us

## DILL, ET AL 85.475 ACRES

Lying in Virginia Military Survey 3437, Jefferson Township, Logan County, Ohio.

Being all of the Barbara J. Dill, et al 84.853 acre tract as deeded and described in Official Record 969, Page 802, Tract III & Official Record 1026, Page 396, Tract III of the Logan County Records of Deeds and being more particularly described as follows:

Commencing on a 5/8 inch iron rod found in a monument box at Station 107+47 (Logan County Engineer's Field Book 579, Page 42) on the intersection of the center-lines of Ohio Route 540 and Ohio Route 533.

THENCE, with the center-line of Ohio Route 533 (60 feet wide), the following two courses:

N 05°-39'-40"W, a distance of 777.01 feet to a 5/8 inch iron rod found in a monument box at Station 115+25 (Logan County Engineer's Field Book 579, Page 43).

N 06°-53'-38"W, a distance of 713.27 feet to a MAG nail set at the TRUE POINT OF BEGINNING.

THENCE, with the north line of the Linda J. Taylor 0.267 acre tract (O.R. 954, Pg. 665, Tract I), S 84°-13'-54"W, a distance of 293.32 feet to a 5/8 inch iron rod found, passing a railroad spike found at 0.42 feet and a 5/8 inch iron rod set at 30.00 feet.

THENCE, with the west lines of the said 0.267 acre tract, the Linda J. Taylor 1.50 acre tract (O.R. 954, Pg. 665, Tract II) and the Nick Richardson 1 3/4 acre tract (O.R. 1011, Pg. 746), S 05°-55'-03"E, a distance of 490.92 feet to the remains of a stone found.

THENCE, with the north lines of the Denise Talebi Gillespie 4.667 acre tract and 6.879 acre tract (O.R. 986, Pg. 703, Tract I and Tract II), the Donald R. King 10.601 acre tract (O.R. 918, Pg. 732) and the Donald R. King 4.743 acre tract (O.R. 836, Pg. 368, Tract II), S 83°-36'-04"W, a distance of 1467.14 feet to a 5/8 inch iron rod found on the west line of Virginia Military Survey 3437, passing a 5/8 inch iron rod set at 2.00 feet.

THENCE, with the west line of Virginia Military Survey 3437 and the east line of the Donald R. King 26.518 acre tract (O.R. 836, Pg. 368, Tract I), N 05°-28'-08"W, a distance of 972.23 feet to a 5/8 inch iron rod found.

THENCE, with the west line of Virginia Military Survey 3437 and the east lines of the Timothy E. Tillman and Marcia A. Tillman, Co-Trustees 84.287 acre tract (O.R. 746, Pg. 902, Tract I) and the William Ray Wilt, Jr., 191.970 acre tract (O.R. 625, Pg. 26, Tract I), N 04°-10'-12"W, a distance of 1336.95 feet to a 5/8 inch iron set.

THENCE, with the south line of the Jason E. Robson and Karen E. Robson, 23.113 acre tract (O.R. 315, Pg. 83, Tract I), N 83°-58'-29"E, a distance of 1726.95 feet to a MAG nail set on the center-line of Ohio Route 533, passing a 5/8 inch iron rod set at 1696.93 feet.

THENCE, with the center-line of Ohio Route 533, the following three courses:

S 03°-50'-20"E, a distance of 26.51 feet to a 5/8 inch iron rod found in a monument box at Station 140+25.5 (Logan County Engineer's Field Book 579, Page 44).

S 02°-03'-05"E, a distance of 525.18 feet to a 5/8 inch iron rod found in a monument box at Station 135+00 (Logan County Engineer's Field Book 579, Page 44).



# Lee Surveying and Mapping Co., Inc.

Land Surveys • Topography • Subdivisions • Construction Layout

117 N. Madriver St.  
Bellefontaine OH 43311



Phone: (937) 593-7335  
Fax: (937) 593-7444  
surveys@lsminc.us

S 06°-53'-38"E, a distance of 225.75 feet to a MAG nail set.

THENCE, with the lines of the Richard A. Amerine 3.00 acre tract (Vol. 377, Pg. 706), the following three courses:

S 67°-27'-19"W, a distance of 406.28 feet to a 5/8 inch iron rod found, passing a 5/8 inch iron rod found at 31.15 feet.

S 06°-52'-03"E, a distance of 306.45 feet to a 5/8 inch iron rod found.

N 75°-10'-14"E, a distance of 395.14 feet to a MAG nail set on the center-line of Ohio Route 533, passing a 5/8 inch iron rod set at 364.85 feet.

THENCE, with the center-line of Ohio Route 533, S 06°-53'-38"E, a distance of 671.76 feet to the point of beginning.

Containing 85.475 acres, of which 0.999 acre is within the highway right-of-way.

Property is subject to any and all previous easements and rights-of-way of record.

The basis for bearings is the center-line of Ohio Route 533 between Stations 107+47 and 115+25, being N 05°-39'-40"W, and all other bearings are from angles and distances measured in a field survey by Lee Surveying and Mapping Co., Inc. on April 20, 2011.

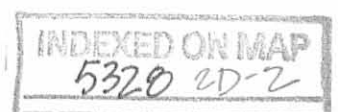


Description prepared by:

A handwritten signature in black ink that reads 'William K. Bruce'.

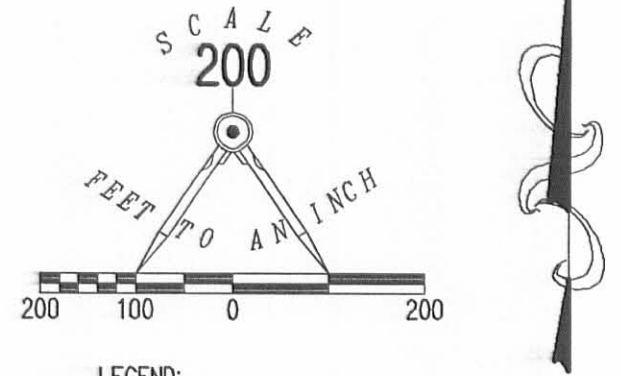
William K. Bruce  
Professional Surveyor 7437  
April 21, 2011

51150411

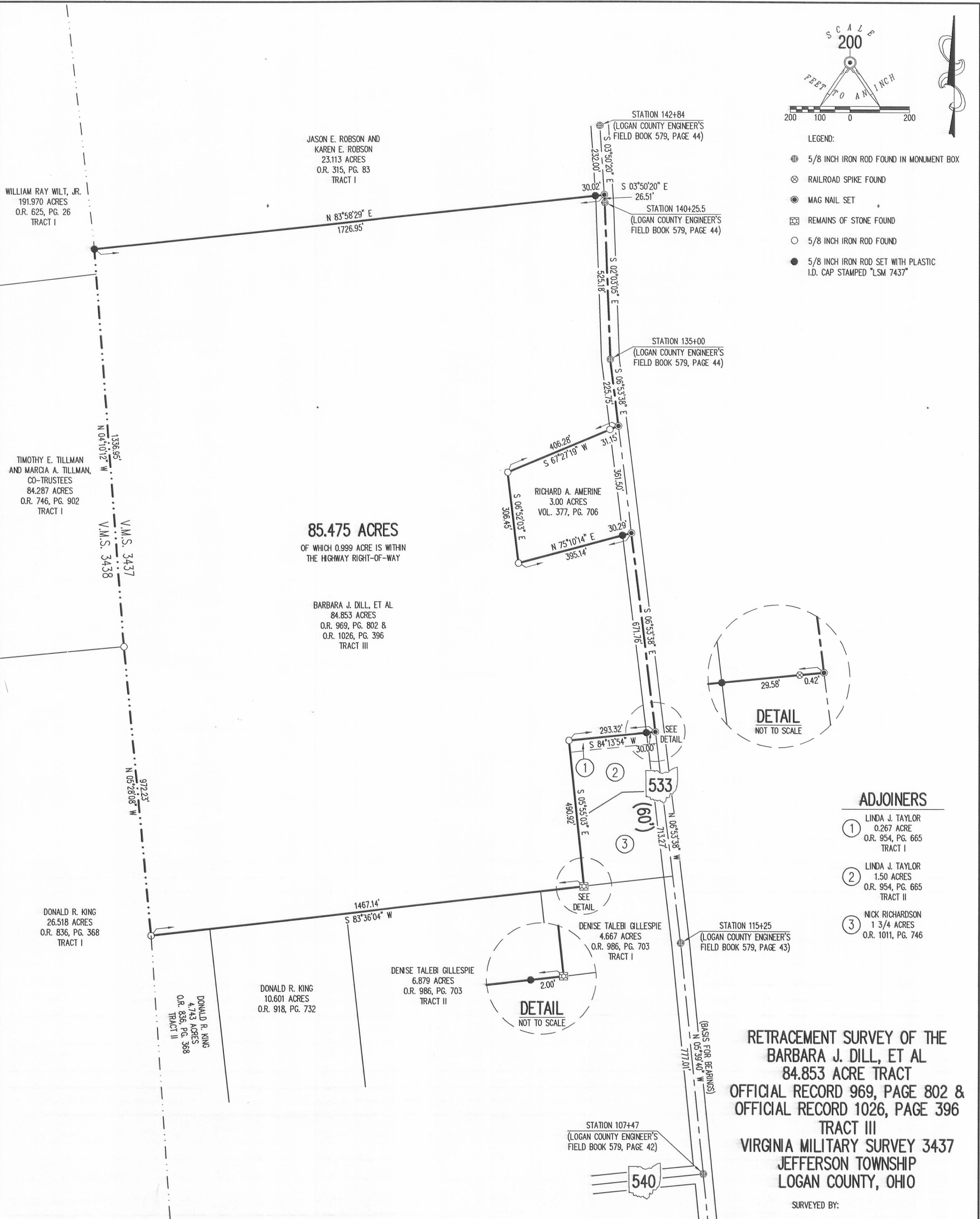




REC'D 4-26-11 S.M.Y.O.C.



- LEGEND:
- ⊕ 5/8 INCH IRON ROD FOUND IN MONUMENT BOX
  - ⊗ RAILROAD SPIKE FOUND
  - MAG NAIL SET
  - ⊠ REMAINS OF STONE FOUND
  - 5/8 INCH IRON ROD FOUND
  - 5/8 INCH IRON ROD SET WITH PLASTIC I.D. CAP STAMPED "LSM 7437"

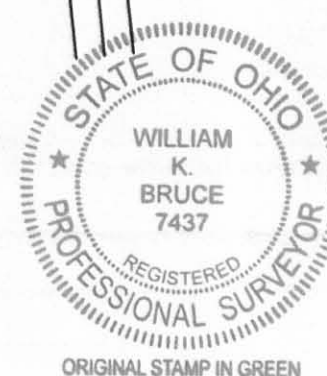


ADJOINERS

- ① LINDA J. TAYLOR  
0.267 ACRE  
O.R. 954, PG. 665  
TRACT I
- ② LINDA J. TAYLOR  
1.50 ACRES  
O.R. 954, PG. 665  
TRACT II
- ③ NICK RICHARDSON  
1 3/4 ACRES  
O.R. 1011, PG. 746

RETRACEMENT SURVEY OF THE  
BARBARA J. DILL, ET AL  
84.853 ACRE TRACT  
OFFICIAL RECORD 969, PAGE 802 &  
OFFICIAL RECORD 1026, PAGE 396  
TRACT III  
VIRGINIA MILITARY SURVEY 3437  
JEFFERSON TOWNSHIP  
LOGAN COUNTY, OHIO

SURVEYED BY:  
*William K. Bruce*  
WILLIAM K. BRUCE  
PROFESSIONAL SURVEYOR 7437  
APRIL 20, 2011



COPYRIGHT 2011 BY:  
LEE SURVEYING & MAPPING CO., INC.  
117 North Madriver Street  
BELLEFONTAIN, OHIO 43311  
(937) 593-7335  
surveys@lsmcinc.us  
KSS D0411 51150411 L-5115-2

2 WORKING DAYS  
**BEFORE YOU DIG**  
CALL TOLL FREE 800-362-2764  
OHIO UTILITIES PROTECTION SERVICE.

INDEXED ON MAP  
5928 2P