

Lee Surveying and Mapping Co.



Farm Surveys • Lot Surveys • Descriptions • Subdivisions

855 EAST SANDUSKY AVENUE
BELLEFONTAINE, OHIO 43311

CLAYTON M. LEE, P. S.
(513) 593-5780

WALTER LAMB SURVEY

Lying in V. M. S. No. 3442, Jefferson Township, Logan County, Ohio and being out of that 64.7 acre tract and that 20.0 acre tract lying in the name of J.P. & P.R. Stanley as recorded and described in Volume 345, Page 604 of the Logan County Records of Deeds and more particularly described as follows:

Beginning at a railroad spike found at the intersection of the center-lines of Township Road No. 219 and County Highway No. 9. This point lying on the North line of V.M.S. No. 3442.

THENCE, with the V.M.S. line, the same being the south line of a 0.206 acre lot described in Volume 334, Page 355, N 84°-17' E, a distance of 126.50 feet to an iron rod found at the southeast corner of said 0.206 acre lot.

THENCE, with the south line of a 0.544 acre lot described in Volume 344, Page 352, N 85°-08' E, a distance of 160.53 feet to an iron rod.

THENCE, with the south line of a 12.43 acre tract, a 3 acre tract and a 29 acre tract, N 85°-00'-20" E, a distance of 1660.24 feet to an iron rod at the northwest corner of that 50.00 acre tract described in volume 368, Page 299.

THENCE, S 9°-06' E, with the west line of said 50 acres a distance of 60.15 feet to an iron rod.

THENCE, S 84°-58' W, across that 20 acres described in Volume 345, Page 604 and the 64.7 acres described in same deed, a distance of 2002.4 feet to a P K nail set in the center-line of County Highway No.9, 60 feet at right angles to the north line.

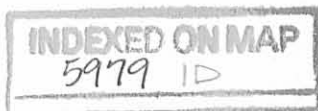
THENCE, with the center-line of County highway No.9, N 35°-16' E, a distance of 78.67 feet to the point of beginning. containing 2.680 acres, of which 1.480 acres are out of the 20 acre tract and 1.200 acres are out of the 64.7 acre tract.

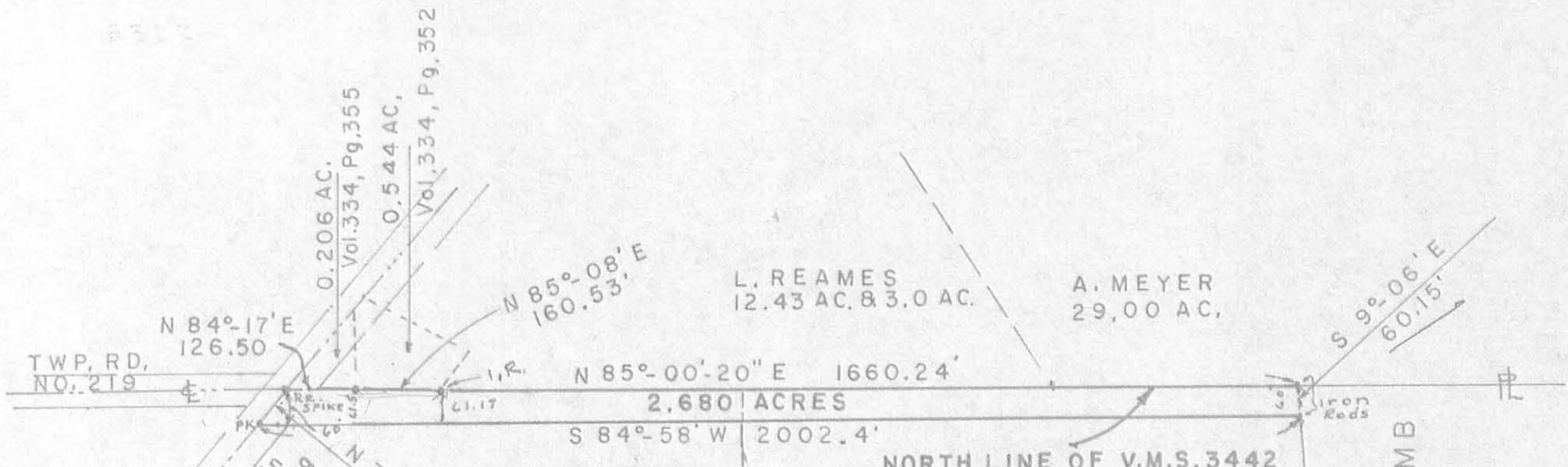
Last previous deed reference: Volume 345, Page 604.

Surveyed by

Clayton M. Lee

Clayton M. Lee
Reg. Surveyor No. 6181
12-28-76

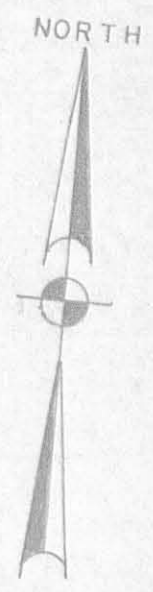




NOTE:
 CO. HWY. NO. 9
 New right-of-way in
 the process of being
 acquired by Logan
 County Commissioners
 at this time.

J.P. & P.R. STANLEY
 64.7 ACRES
 VOL. 345, PG. 604

5979 IP
 INDEXED ON MAP



SCALE - 1" = 300'

**SURVEY OF 2.680 ACRES (60 FT. LANE)
 OUT OF J.P. & P.R. STANLEY PROPERTY
 V.M.S. 3442, JEFFERSON TWP.
 LOGAN COUNTY, OHIO**

WALTER L. JR. & VICKI LAMB
 50 ACRES & 77.10 ACRES
 VOL. 368, PG. 299

L. REAMES
 12.43 AC. & 3.0 AC.

A. MEYER
 29.00 AC.

SURVEYED BY Clayton M. Lee

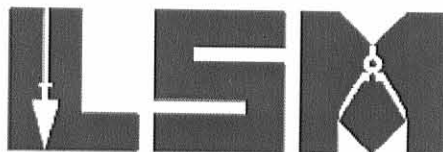
Clayton M. Lee
 Reg. Surveyor 6181
 12-28-76

REV'D 3-1-11 SMY MC

Lee Surveying and Mapping Co., Inc.

Land Surveys • Topography • Subdivisions • Construction Layout

117 N. Madriver St.
Bellefontaine OH 43311



Phone: (937) 593-7335
Fax: (937) 593-7444
surveys@lsminc.us

GRABER 64.937 ACRES

Lying in Virginia Military Survey 3442, Jefferson Township, Logan County, Ohio.

Being out of the Lela Faye Graber original 50.28 acre tract, all of the 24 acre tract and the remainder of the original 20 acre tract as deeded and described in Official Record 421, Page 913 Parcel 1 First Tract, Third Tract and Parcel 2 of the Logan County Records of Deeds and being more particularly described as follows:

Commencing at a 1 inch iron rod found inside a monument box at the intersection of center-lines of County Highway 9 (variables widths) and Township Road 219.

THENCE, with the center-line of County Highway 9, S 35°-38'-27"W, a distance of 78.67 feet to a MAG nail set at the TRUE POINT OF BEGINNING.

THENCE, with the south line of the Pines Lake, LTD. 2.680 acre tract (O.R. 816, Pg. 107, Tract III), N 85°-00'-30"E, a distance of 2001.96 feet to a 5/8 inch iron rod set, passing a 5/8 inch iron rod set at 39.53 feet.

THENCE, with the west line of the Pines Lake, LTD., 50 acre tract (O.R. 816, Pg. 107 Tract I), S 08°-58'-19"E, a distance of 1607.66 feet to a 5/8 inch iron rod set.

THENCE, with the north line of the Pines Lake II, LTD., 65.71 acre tract (O.R. 816, Pg. 110 Tract VI), S 83°-50'-13"W, a distance of 1283.20 feet to a 5/8 inch iron set.

THENCE, N 08°-56'-55"W, a distance of 754.09 feet to a 5/8 inch iron rod set.

THENCE, S 80°-04'-21"W, a distance of 879.92 feet to a 5/8 inch iron rod set.

THENCE, N 01°-50'-33"W, a distance of 803.28 feet to a 5/8 inch iron rod set.

THENCE, N 54°-21'-33"W, a distance of 57.64 feet to a MAG nail set, passing a 5/8 inch iron rod set at 27.64 feet.

THENCE, with the center-line of County Highway 9, N 35°-38'-27E, a distance of 150.00 feet to the point of beginning.

Containing 64.937 acres of which 0.156 acre is within the highway right-of-way.

Property is subject to any and all previous easements and rights-of-way of record.

The basis for bearings is the center-line of County Highway 9, being N 35°-10'-00"E, and all other bearings are from angles and distances measured in a field survey by Lee Surveying and Mapping Co., Inc. on February 17, 2011.

Description prepared by:

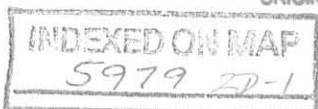


William K. Bruce

William K. Bruce
Professional Surveyor 7437
February 18, 2011

14160111

ORIGINAL STAMP IN GREEN

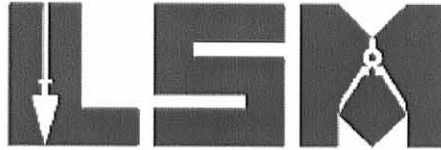


REV ID 3-1-11 SMM OK

Lee Surveying and Mapping Co., Inc.

Land Surveys • Topography • Subdivisions • Construction Layout

117 N. Madriver St.
Bellefontaine OH 43311



Phone: (937) 593-7335
Fax: (937) 593-7444
surveys@lsminc.us

GRABER 32.608 ACRE

Lying in Virginia Military Survey 3442, Jefferson Township, Logan County, Ohio.

Being out of the Lela Faye Graber original 50.28 acre tract, all of the 1.53 acre tract and the remainder of the 14.809 acre tract as deeded and described in Official Record 421, Page 913 Parcel 1, First Tract, Second Tract and Parcel 3 of the Logan County Records of Deeds and being more particularly described as follows:

Commencing at a 1 inch iron rod found inside a monument box at the intersection of center-lines of County Highway 9 and Township Road 219.

THENCE, with the center-line of County Highway 9 (variables widths), S 35°-38'-27"W, a distance of 228.67 feet to a MAG nail set at the TRUE POINT OF BEGINNING.

THENCE, S 54°-21'-33"E, a distance of 57.64 feet to a 5/8 inch iron rod set, passing a 5/8 inch iron rod set at 30.00 feet.

THENCE, S 01°-50'-33"E, a distance of 803.28 feet to a 5/8 inch iron rod set.

THENCE, N 80°-04'-21"E, a distance of 879.92 feet to a 5/8 inch iron rod set.

THENCE, S 08°-56'-55"E, a distance of 754.09 feet to a 5/8 inch iron rod set.

THENCE, with the north line of the Pines Lake II, LTD., 65.71 acre tract (O.R. 816, Pg. 110 Tract VI), S 83°-50'-13"W, a distance of 1161.85 feet to a 5/8 inch iron rod found.

THENCE, with the north line of the Michael Allen Henman and Kelly Anne Henman 8.392 acre tract (O.R. 692, Pg. 767), S 89°-08'-39"W, a distance of 592.05 feet to a 5/8 inch iron rod found.

THENCE, with the southeastern line of the John D. Greene and Judy L. Greene 3.046 acre tract (O.R. 49, Pg. 85) and the southeastern line of the Robert L. Farrington and Nancy J. Farrington 3.176 acre tract (O.R. 925, Pg. 724), N 35°-10'-00"E, a distance of 457.19 feet to a 5/8 inch iron rod found.

THENCE, with the lines of the said 3.176 acre tract the following two courses:

N 13°-03'-20"W, a distance of 182.89 feet to a 5/8 inch iron rod found.

N 87°-47'-48"W, a distance of 238.74 feet to a MAG nail set, passing a 5/8 inch iron rod found at 188.44 feet.

THENCE, with the center-line of County Highway 9 the following two courses:

N 35°-10'-00"E, a distance of 1137.78 feet to a 1 inch iron bar found inside a monument box at Station 83+11.69.



Lee Surveying and Mapping Co., Inc.

Land Surveys • Topography • Subdivisions • Construction Layout

117 N. Madriver St.
Bellefontaine OH 43311



Phone: (937) 593-7335
Fax: (937) 593-7444
surveys@lsmc.us

N 35°-38'-27'E, a distance of 88.66 feet to the point of beginning.

Containing 32.608 acres of which 1.370 acre is within the highway right-of-way.

Property is subject to any and all previous easements and rights-of-way of record.

The basis for bearings is the center-line of County Highway 9, being N 35°-10'-00"E, and all other bearings are from angles and distances measured in a field survey by Lee Surveying and Mapping Co., Inc. on February 17, 2011.

Description prepared by:

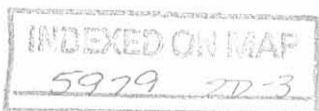


ORIGINAL STAMP IN GREEN

A handwritten signature in black ink that reads 'William K. Bruce'.

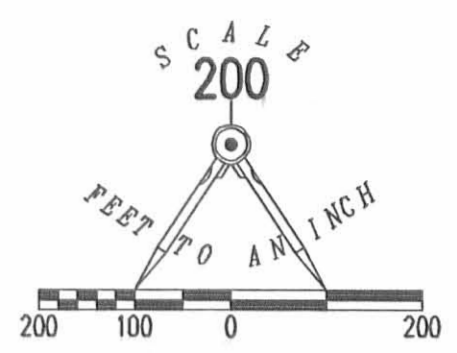
William K. Bruce
Professional Surveyor 7437
February 18, 2011

14160111

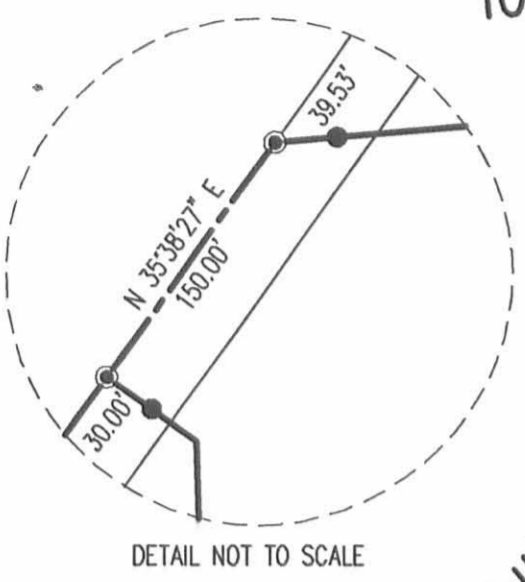


REC'D 3-1-11 S.M.O.C.

LINE	BEARING	DISTANCE
L1	S 35°38'27" W	78.67'
L2	N 35°38'27" E	88.66'
L3	S 54°21'33" E	57.64'



- LEGEND
- 5/8 INCH IRON ROD SET WITH PLASTIC I.D. CAP STAMPED "LSM 7437"
 - 5/8 INCH IRON ROD FOUND
 - ⊙ MAG NAIL SET
 - ☒ 1 INCH IRON ROD FOUND INSIDE MONUMENT BOX



TOWNSHIP ROAD 219

COUNTY HIGHWAY 9 (VARIABLE WIDTHS)
 BASIS FOR BEARINGS
 N 35°10'00" E
 1137.78'

64.937 ACRES
 OF WHICH 0.156 ACRE IS WITHIN
 THE HIGHWAY RIGHT-OF-WAY.

LELA FAYE GRABER
 ORIGINAL 50.28 ACRE TRACT
 O.R. 421, PG. 913
 PARCEL 1, FIRST TRACT

32.608 ACRES
 OF WHICH 1.370 ACRES IS WITHIN
 THE HIGHWAY RIGHT-OF-WAY

LELA FAYE GRABER
 1.53 ACRE TRACT
 O.R. 421, PG. 913
 PARCEL 1, SECOND TRACT

ROBERT L. FARRINGTON AND NANCY J. FARRINGTON
 3.178 ACRE TRACT
 O.R. 925, PG. 72A

LELA FAYE GRABER
 14.809 ACRE TRACT
 O.R. 421, PG. 913
 PARCEL 3

MICHAEL ALLEN HENMAN AND KELLY ANNE HENMAN
 8.392 ACRE TRACT
 O.R. 692, PG. 767

PINES LAKE II, LTD.
 65.71 ACRE TRACT
 O.R. 816, PG. 110
 TRACT VI

PINES LAKE, LTD.
 2.680 ACRE TRACT
 O.R. 816, PG. 107
 TRACT III

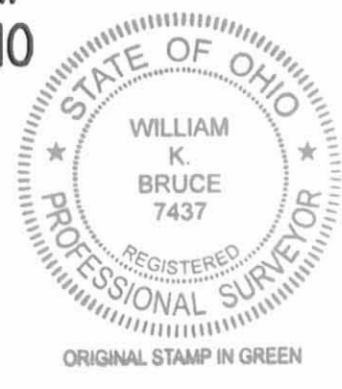
LELA FAYE GRABER
 ORIGINAL 20 ACRE TRACT
 O.R. 421, PG. 913
 PARCEL 2

LELA FAYE GRABER
 24 ACRE TRACT
 O.R. 421, PG. 913
 PARCEL 1, THIRD TRACT

PINES LAKE, LTD.
 50 ACRE TRACT
 O.R. 816, PG. 107
 TRACT I

PINES LAKE II, LTD.
 50 ACRE TRACT
 O.R. 816, PG. 110
 TRACT II

A SURVEY OF A 64.937 ACRE TRACT OUT OF THE
 LELA FAYE GRABER
 ORIGINAL 50.28 ACRE TRACT, ALL OF THE 24 ACRE TRACT
 AND THE REMAINDER OF THE ORIGINAL 20 ACRE TRACT
 OFFICIAL RECORD 421, PAGE 913 PARCEL 1 FIRST TRACT, THIRD TRACT AND PARCEL 2
 AND A SURVEY OF A 32.608 ACRE TRACT OUT OF THE
 LELA FAYE GRABER
 ORIGINAL 50.28 ACRE TRACT, ALL OF THE 1.53 ACRE TRACT
 AND THE REMAINDER OF THE 14.809 ACRE TRACT
 OFFICIAL RECORD 421, PAGE 913 PARCEL 1 FIRST TRACT, SECOND TRACT AND PARCEL 3
 VIRGINIA MILITARY SURVEY 3442
 JEFFERSON TOWNSHIP
 LOGAN COUNTY, OHIO



SURVEYED BY:
William K. Bruce
 WILLIAM K. BRUCE
 PROFESSIONAL SURVEYOR 7437
 FEBRUARY 17, 2011

COPYRIGHT 2011 BY:
 LEE SURVEYING & MAPPING CO., INC.
 117 North Medriver Street
 BELLEFONTAINE, OHIO 43311
 (937) 593-7335
 surveys@lsmcinc.us
 ADW D0111 14160111 L-14160111-2

RIGHT-OF-WAY REFERENCES:
 DEED VOLUME 368, PAGE. 545
 FIELD BOOK 578, PAGE. 15

2 WORKING DAYS
BEFORE YOU DIG
 CALL TOLL FREE 800-362-2764
 OHIO UTILITIES PROTECTION SERVICE

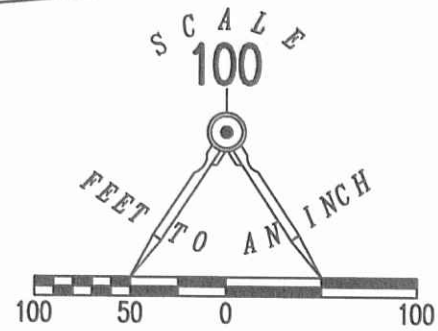
INDEXED ON MAP
 5979 2P



APPROVED

12-23-16

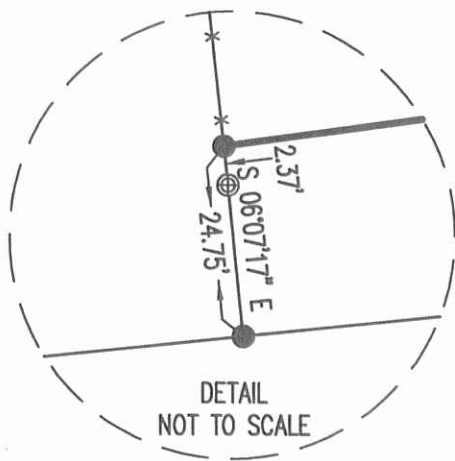
PINE LAKES II, LTD.
65.71 ACRE TRACT
O.R. 816, PG. 110
TRACT VI



RETRACEMENT SURVEY OF THE
WEST LINE OF THE
PINE LAKES II, LTD.
REMAINDER OF THE 2 ACRE TRACT
AND THE WEST LINE AND PART OF THE
SOUTH LINE OF THE REMAINDER OF
THE 15 ACRE TRACT
OFFICIAL RECORD 816, PAGE 110
TRACT IV AND TRACT I
VIRGINIA MILITARY SURVEY 3442
JEFFERSON TOWNSHIP
LOGAN COUNTY, OHIO

BRENT R. WILLIAMSON
35 ACRES
O.R. 92, PG. 264
TRACT A, FIRST TRACT

PINE LAKES II, LTD.
ORIGINAL 15 ACRE TRACT
O.R. 816, PG. 110
TRACT I



LEGEND:

- ⊗ RAILROAD SPIKE FOUND
- ⊕ 6 INCH FENCE CORNER POST FOUND
- 5/8 INCH IRON ROD FOUND
- 5/8 INCH IRON ROD SET WITH PLASTIC I.D. CAP STAMPED "LSM"

SEE
DETAIL

329.68'
S 81°54'00" W

PINE LAKES II, LTD.
ORIGINAL 2 ACRE TRACT
O.R. 816, PG. 110
TRACT IV

379.50'
N 28°53'17" W

BRENT R. WILLIAMSON
+/- 2 ACRES
O.R. 92, PG. 264
TRACT A, SECOND TRACT

BRENT R. WILLIAMSON
10 ACRES
O.R. 92, PG. 264
TRACT A, THIRD TRACT

SURVEYED BY:

JEFFREY I. LEE
PROFESSIONAL SURVEYOR 6359
DECEMBER 7, 2016



ORIGINAL STAMP IN GREEN

INDEXED ON MAP
5979 3P

COPYRIGHT 2016 BY:
LEE SURVEYING & MAPPING CO., INC.
117 North Madriver Street
BELLEFONTAINE, OHIO 43311
(937) 593-7335
WWW.LSMINC.US
surveys@lsminc.us

STATION 872+30.69
(LOGAN COUNTY ENGINEER'S
PLAN L-44, SHEET 2 OF 6)

THIS SURVEY WAS PREPARED IN THE ABSENCE OF
A COMPLETE AND ACCURATE TITLE SEARCH AND
DOES NOT GUARANTEE TITLE.

2 WORKING DAYS
BEFORE YOU DIG

CALL TOLL FREE **800-362-2764**
OHIO UTILITIES PROTECTION SERVICE.

KSS D0816 61560816 L-6156-3