

REC'D 7-24-07 SUM OK

Lee Surveying and Mapping Co., Inc.

Land Surveys • Topography • Subdivisions • Construction Layout

117 N. Madriver St.
Bellefontaine OH 43311



Phone: (937) 593-7335
Fax: (937) 593-7444

MUSSER 20.00 FEET WIDE INGRESS/EGRESS EASEMENT #1

Lying in Virginia Military Survey 3220, Jefferson Township, Logan County, Ohio.

Being a 20.00 feet wide ingress/egress easement through the Eric Musser and Holly Musser 6.000 acre tract as deeded and described in Official Record 472, Page 717 of the Logan County Records of Deeds and being more particularly described as follows:

Commencing on a 1 inch iron pipe found in a monument box on the center-line of County Highway 55 at center-line Station 55 + 45 (Logan County Engineer's survey monument record).

THENCE, with the center-line of County Highway 55 (60 feet wide), N 5°-03'-45"E, a distance of 1604.59 feet to a point on the center-line of a 60 feet wide easement, passing a railroad spike found at 1574.59 feet.

THENCE, with the center-line of the 60 feet wide easement, S 84°-56'-14"E, a distance of 986.24 feet to a point at the TRUE POINT OF BEGINNING.

THENCE, with the center-line of this easement, the following two courses:

S 5°-03'-34"W, a distance of 61.90 feet to a point.

S 84°-56'-26"E, a distance of 10.00 feet to a point at the terminus of this easement.

The basis for bearings is the center-line of County Highway 55 at survey Station 55 + 45, being N 5°-03'-45"E, and all other bearings are from angles and distances measured in a field survey by Lee Surveying and Mapping Co., Inc. on July 17, 2007.

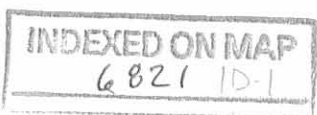


ORIGINAL STAMP IN GREEN

Description prepared by:

William K. Bruce
Professional Surveyor 7437
July 23, 2007

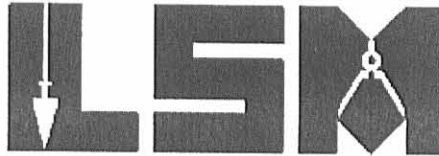
980077



REC'D 7-24-07 SMJ OK
Lee Surveying and Mapping Co., Inc.

Land Surveys • Topography • Subdivisions • Construction Layout

117 N. Madriver St.
Bellefontaine OH 43311



Phone: (937) 593-7335
Fax: (937) 593-7444

**HEILMAN
20.00 FEET WIDE INGRESS/EGRESS EASEMENT #2**

Lying in Virginia Military Survey 3220, Jefferson Township, Logan County, Ohio.

Being a 20.00 feet wide ingress/egress easement through the Harold Heilman and Patricia Heilman, Trustees of the Heilman Family Trust dated June 13, 1995, 35.147 acre tract as deeded and described in Official Record 298, Page 193 of the Logan County Records of Deeds and being more particularly described as follows:

Commencing on a 1 inch iron pipe found in a monument box on the center-line of County Highway 55 at center-line Station 55 + 45 (Logan County Engineer's survey monument record).

THENCE, with the center-line of County Highway 55 (60 feet wide), N 5°-03'-45"E, a distance of 1574.59 feet to a railroad spike found.

THENCE, with the lines of the Eric Musser 6.000 acre tract (O.R. 472, Pg. 717), the following four courses:

S 84°-56'-14"E, a distance of 248.71 feet to a 5/8 inch iron rod found, passing a 5/8 inch iron rod found at 30.00 feet.

S 5°-03'-46"W, a distance of 183.08 feet to a 5/8 inch iron rod found.

S 84°-50'-15"E, a distance of 747.53 feet to a 5/8 inch iron rod set.

N 5°-03'-34"E, a distance of 152.49 feet to a point at the TRUE POINT OF BEGINNING.

THENCE, with the center-line of this easement, the following three courses:

S 84°-56'-26"E, a distance of 78.78 feet to a point.

N 43°-31'-37"E, a distance of 92.30 feet to a point.

N 57°-13'-29"E, a distance of 191.57 feet to a point at the terminus of this easement.

The basis for bearings is the center-line of County Highway 55 at survey Station 55 + 45, being N 5°-03'-45"E, and all other bearings are from angles and distances measured in a field survey by Lee Surveying and Mapping Co., Inc. on July 17, 2007.



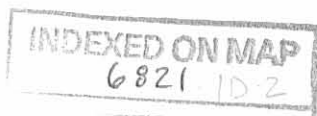
ORIGINAL STAMP IN GREEN

Description prepared by:

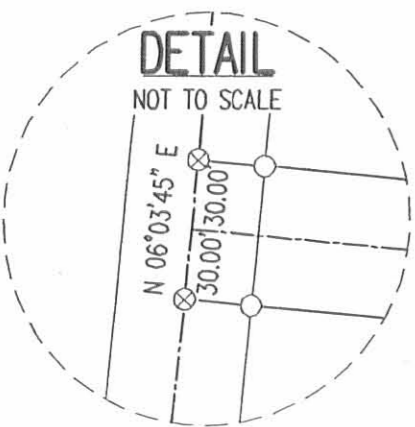
A handwritten signature in black ink that reads 'William K. Bruce'.

William K. Bruce
Professional Surveyor 7437
July 23, 2007

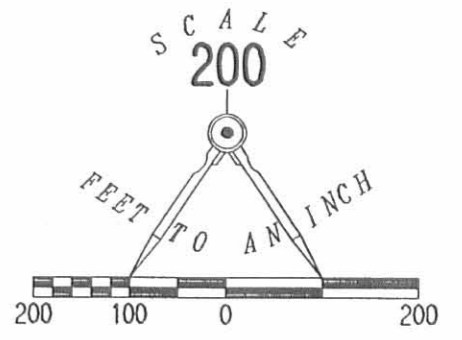
980077



REC'D 7-24-07 S.M.D.K.

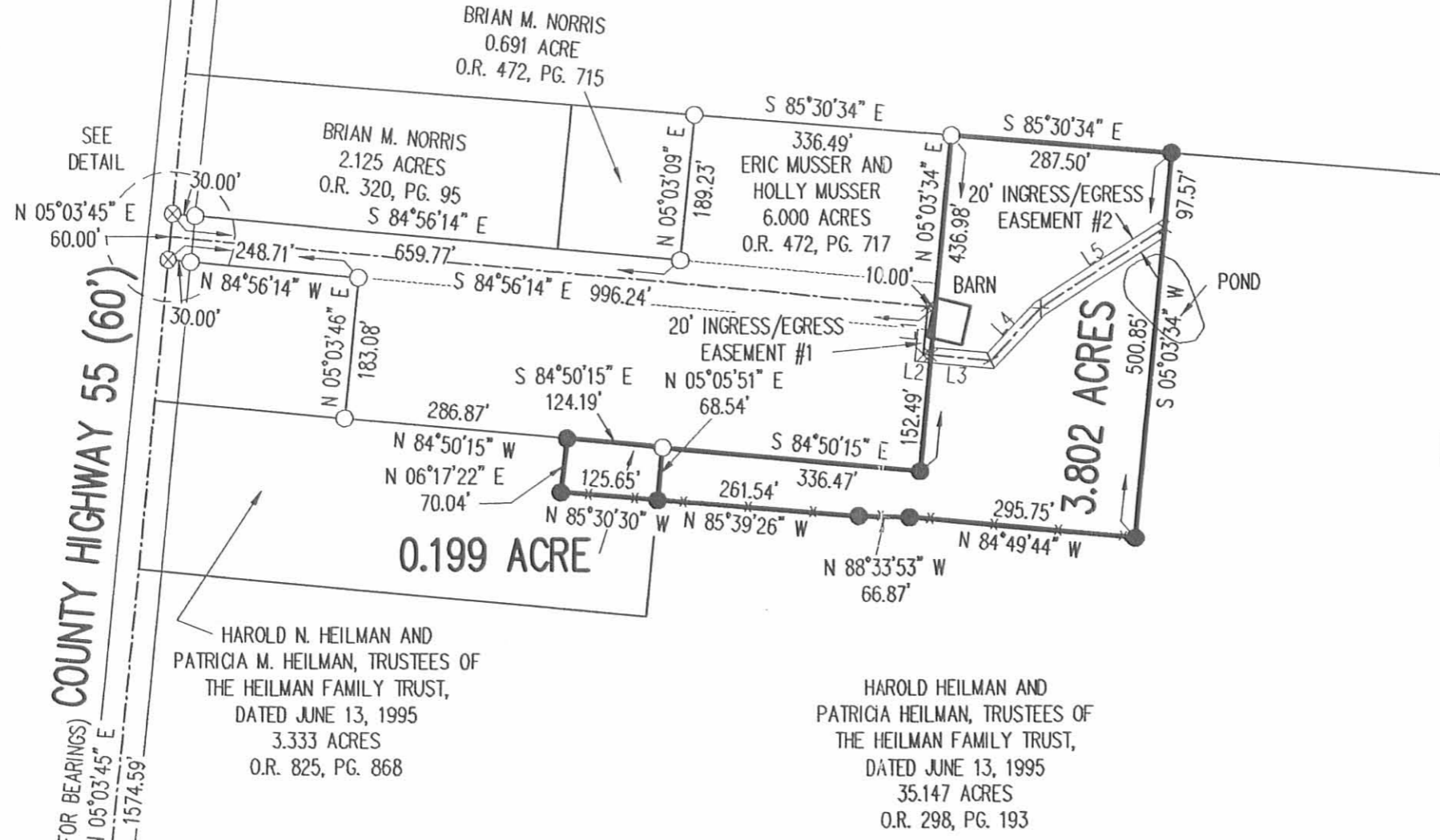


DALE JOSHUA LOVETT
60 ACRES
O.R. 649, PG. 301



SURVEY OF 3.802 ACRES OUT OF THE HAROLD HEILMAN AND PATRICIA HEILMAN, TRUSTEES OF THE HEILMAN FAMILY TRUST, DATED JUNE 13, 1995 35.147 ACRE TRACT OFFICIAL RECORD 298, PAGE 193 AND 0.199 ACRE OUT OF THE HAROLD N. HEILMAN AND PATRICIA M. HEILMAN, TRUSTEES OF THE HEILMAN FAMILY TRUST, DATED JUNE 13, 1995 3.333 ACRE TRACT OFFICIAL RECORD 825, PAGE 868 VIRGINIA MILITARY SURVEY 3220 JEFFERSON TOWNSHIP LOGAN COUNTY, OHIO

- LEGEND:
- 1 INCH IRON PIPE FOUND IN MONUMENT BOX
 - RAILROAD SPIKE FOUND
 - 5/8 INCH IRON ROD FOUND
 - 5/8 INCH IRON ROD SET



COUNTY HIGHWAY 55 (60')

BEARINGS AND DISTANCES ALONG CENTER-LINE OF 20' INGRESS/EGRESS EASEMENT

LINE	BEARING	DISTANCE
L1	S 05°03'34" W	61.90'
L2	S 84°56'26" E	10.00'
L3	S 84°56'26" E	78.78'
L4	N 43°31'37" E	92.30'
L5	N 57°13'29" E	191.57'



SURVEYED BY:
William K. Bruce
WILLIAM K. BRUCE
PROFESSIONAL SURVEYOR 7437
JULY 17, 2007
REVISED JULY 23, 2007

COPYRIGHT 2007 BY:
LEE SURVEYING & MAPPING CO., INC.
117 North Madriver Street
BELLEFONTAINE, OHIO 43311
(937) 593-7335
surveys@lsminc.us
KSS D0707 980077 L-980-3

2 WORKING DAYS
BEFORE YOU DIG
CALL TOLL FREE **800-362-2764**
OHIO UTILITIES PROTECTION SERVICE.

STATION 55+45
LOGAN COUNTY ENGINEER'S SURVEY MONUMENT RECORD

INDEXED ON MAP
6821 1P

REC'D 7-11-07 SMY DK

Lee Surveying and Mapping Co., Inc.

Land Surveys • Topography • Subdivisions • Construction Layout

117 N. Madriver St.
Bellefontaine OH 43311



Phone: (937) 593-7335
Fax: (937) 593-7444

LOVETT 69.102 ACRES

Lying in Virginia Military Survey 3220, Jefferson Township, Logan County, Ohio.

Being all of the Dale Joshua Lovett 60 acre tract as deeded and described in Official Record 649, Page 301 of the Logan County Records of Deeds and being more particularly described as follows:

Commencing on a 1-1/4 inch iron pipe found on the intersection of center-lines of County Highway 10 and County Highway 55.

THENCE, with the center-line of County Highway 55 (60 feet wide), S 4°42'-18"W, a distance of 1486.24 feet to a 3/4 inch iron bar found at center-line Station 86 + 30 (Logan County Engineer's Field Book 607, Page 33) at the TRUE POINT OF BEGINNING.

THENCE, with the south lines of the Ralph R. Williams, Jr., 1.993 acre tract (O.R. 425, Pg. 901) and the Dwight M. Rogers, Trustee, 10.42 acre tract and 15.53 acre tract (O.R. 555, Pg. 53, Parcel III and Parcel II), S 86°36'-55"E, a distance of 2342.23 feet to a 5/8 inch iron rod found, passing a 5/8 inch iron rod set at 30.01 feet.

THENCE, with the east line of the Treelinks, Inc., 150.729 acre tract (O.R. 190, Pg. 536), S 5°47'-01"W, a distance of 1312.18 feet to a 5/8 inch iron rod set.

THENCE, with the north lines of the Harold Heilman and Patricia Heilman, Trustees, 35.147 acre tract (O.R. 298, Pg. 193), the Eric Musser 6.000 acre tract (O.R. 472, Pg. 717) and the Brian M. Norris 0.691 acre tract (O.R. 472, Pg. 715) and 2.125 acre tract (O.R. 320, Pg. 95), N 85°30'-34"W, a distance of 2326.79 feet to a railroad spike found on the center-line of County Highway 55, passing a 5/8 inch iron rod found at 2296.77 feet.

THENCE, with the center-line of County Highway 55, the following two courses:

N 5°02'-05"E, a distance of 866.92 feet to a railroad spike found at center-line Station 82 + 30 (Logan County Engineer's Field Book 607, Page 33).

N 5°24'-13"E, a distance of 399.80 feet to the point of beginning.

Containing 69.102 acres, of which 0.873 acre is within the highway right-of-way.

The basis for bearings is the center-line of County Highway 55 south of County Highway 10, being S 4°42'-18"W, and all other bearings are from angles and distances measured in a field survey by Lee Surveying and Mapping Co., Inc. on July 3, 2007.

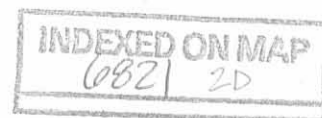


ORIGINAL STAMP IN GREEN

Description prepared by:

William K. Bruce
Professional Surveyor 7437
July 3, 2007

4464067



REC'D 7-11-07 SWM/OLC

COUNTY HIGHWAY 10

STATION 86+30
LOGAN COUNTY ENGINEER'S
F.B. 607, PG. 33

(BASIS FOR BEARINGS)
S 04°42'18" W
1486.24'

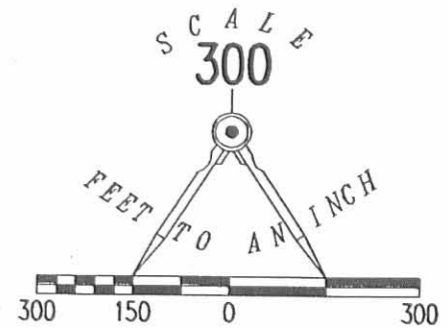
DWIGHT M. ROGERS,
TRUSTEE
10.42 ACRES
O.R. 555, PG. 53
PARCEL III

30.01'

SEE
DETAIL

DWIGHT M. ROGERS,
TRUSTEE
15.53 ACRES
O.R. 555, PG. 53
PARCEL II

JOHN L. DILLION
10.074 ACRES
O.R. 92, PG. 626



STATION 82+30
LOGAN COUNTY ENGINEER'S
F.B. 607, PG. 33

COUNTY HIGHWAY 55 (60')

N 05°24'13" E
399.80'

N 05°02'05" E
866.92'

69.102 ACRES
OF WHICH 0.873 ACRE IS WITHIN
THE HIGHWAY RIGHT-OF-WAY

DALE JOSHUA LOVETT
60 ACRES
O.R. 649, PG. 301

RETRACEMENT SURVEY OF THE
DALE JOSHUA LOVETT
60 ACRE TRACT
OFFICIAL RECORD 649, PAGE 301
VIRGINIA MILITARY SURVEY 3220
JEFFERSON TOWNSHIP
LOGAN COUNTY, OHIO

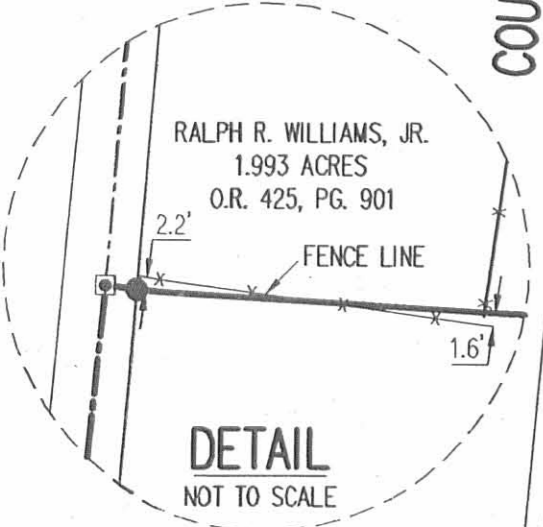
TREELINKS, INC.
150.729 ACRES
O.R. 190, PG. 536

SURVEYED BY:

William K Bruce
WILLIAM K. BRUCE
PROFESSIONAL SURVEYOR 7437
JULY 3, 2007



COPYRIGHT 2007 BY:
LEE SURVEYING & MAPPING CO., INC.
117 North Madriver Street
BELLEFONTAINE, OHIO 43311
(937) 593-7335
surveys@lsmcinc.us
KSR D0707 4464067 L-4464-3



30.02' BRIAN M. NORRIS
2.125 ACRES
O.R. 320, PG. 95

ERIC MUSSER
6.000 ACRES
O.R. 472, PG. 717

BRIAN M. NORRIS
0.691 ACRE
O.R. 472, PG. 715

2326.79'
N 85°30'34" W

HAROLD HEILMAN AND
PATRICIA HEILMAN, TRUSTEE
35.147 ACRES
O.R. 298, PG. 193

INDEXED ON MAP
6821 2P

2 WORKING DAYS
BEFORE YOU DIG
CALL TOLL FREE 800-362-2764
OHIO UTILITIES PROTECTION SERVICE

12661D 9-25-00 smy ok gch

Lee Surveying and Mapping Co., Inc.

Land Surveys • Topography • Subdivisions • Construction Layout

117 N. Madriver St.
Bellefontaine OH 43311



Phone: (937) 593-7335
Fax: (937) 593-7444

HEILMAN 6.000 ACRE

Lying in the Virginia Military Survey 3220, Jefferson Township, Logan County, Ohio.

Being out of the Harold & Patricia Heilman Trustees of the Heilman Family Trust original 35.147 acre tract as deeded and described in Official Record 298, Page 193 of the Logan County Records of Deeds and being more particularly described as follows:

Beginning at a railroad spike found at the northeast corner of the Belle View Estates Subdivision (Plat Cabinet A, Slide 677) and on the center-line of County Highway 55 (60 feet wide).

THENCE, with the center-line of County Highway 55, N 2°-00'00" E, a distance of 9.60 feet to a railroad spike found.

THENCE, with the south line and the south line extended of the Brian M. Norris 2.125 acre tract (O.R. 320, Pg. 95), S 88°-00'-00" E, a distance of 659.77 feet to a 5/8 inch iron rod set passing a 5/8 inch iron rod found at 30.00 feet.

THENCE, N 2°-00'-00" E, a distance of 189.23 feet to a 5/8 inch iron rod set.

THENCE, with the south line of the Robert J. Lovett, Jr. 60.0 acre tract (O.R. 39, Pg. 187), S 88°-34'-19" E, a distance of 336.49 feet to a 5/8 inch iron rod set.

THENCE, S 2°-00'-00" W, a distance of 436.98 feet to a 5/8 inch iron rod set.

THENCE, with the north line extended and the north line of the Robert V. Hertenstein 3.333 acre tract (O.R. 288, Pg. 669), N 87°-54'-00" W, a distance of 747.53 feet to a 5/8 inch iron rod found.

THENCE, with the lines of the Janet S. Franz 1.044 acre tract (O.R. 405, Pg. 784), the following 2 courses:

N 2°-00'-00" E, a distance of 183.08 feet to a 5/8 inch iron rod found.

N 88°-00'-00" W, a distance of 248.71 feet to a railroad spike found, passing a 5/8 inch iron rod found at 218.71 feet.

THENCE, with the center-line of County Highway 55, N 2°-00'-00" E, a distance of 50.40 feet to the point of beginning.

Containing 6.000 acres of which 0.041 acre is within the highway right-of-way.

The basis for bearings is the center-line of County Highway 55 being N 2°-00'-00" E, and all other bearings are from angles and distances measured in a field survey by Lee Surveying and Mapping Co., Inc. on August 30, 1999.

Description prepared by:

Jeffrey I. Lee
Professional Surveyor 6359
September 2, 1999



ORIGINAL STAMP IN GREEN

INDEXED ON MAP
0821 3D-1

L-980

REC'D 10-6-00 SMJ OK ✓

Lee Surveying and Mapping Co., Inc.

Land Surveys • Topography • Subdivisions • Construction Layout

117 N. Madriver St.
Bellefontaine OH 43311



Phone: (937) 593-7335
Fax: (937) 593-7444

HEILMAN INGRESS/EGRESS EASEMENT

Lying in the Virginia Military Survey 3220, Jefferson Township, Logan County, Ohio.

Reserving a 60 feet wide ingress/egress easement over the Harold & Patricia Heilman Trustees of the Heilman Family Trust original 35.147 acre tract as deeded and described in Official Record 298, Page 193 of the Logan County Records of Deeds and being more particularly described as follows:

Beginning at a railroad spike found at the northeast corner of the Belle View Estates Subdivision (Plat Cabinet A, Slide 677) and on the center-line of County Highway 55 (60 feet wide).

THENCE, with the center-line of County Highway 55, S 2°-00'00" W, a distance of 20.40 feet to a point at the TRUE POINT OF BEGINNING.

THENCE, with the center-line of the said easement, S 88°-00'-00" E, a distance of 996.24 feet to the terminus of this easement on the east line of a 6.000 acre tract.

The basis for bearings is the center-line of County Highway 55 being N 2°-00'-00" E, and all other bearings are from angles and distances measured in a field survey by Lee Surveying and Mapping Co., Inc. on August 30, 1999.

Description prepared by:

A handwritten signature in blue ink, appearing to read 'Jeffrey I. Lee', is written over a circular professional seal.

Jeffrey I. Lee
Professional Surveyor 6359
September 2, 1999
Revised September 29, 2000

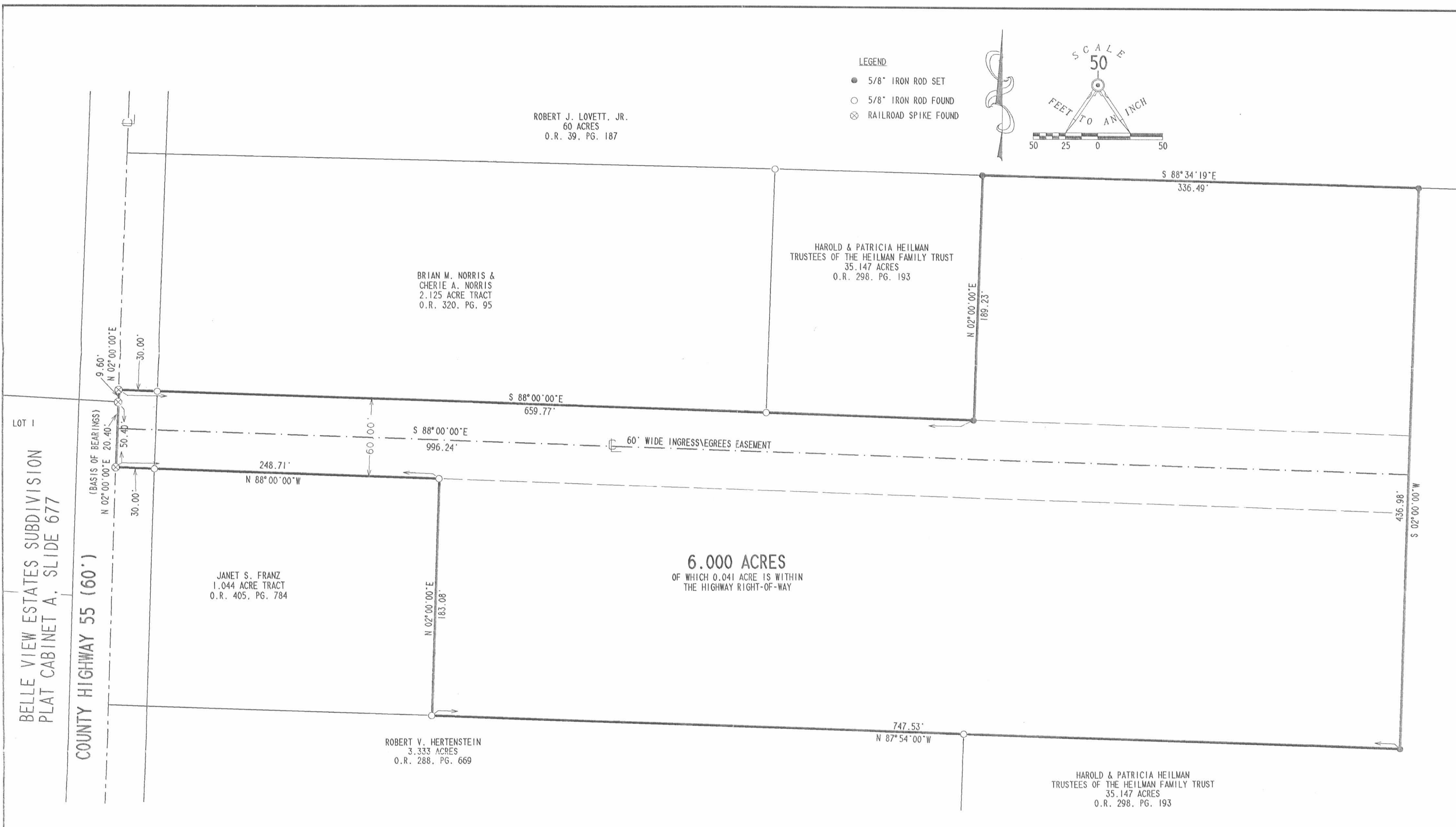


ORIGINAL STAMP IN GREEN

L-980

6821 3D-2

REV'D 9-25-00 SMJ/ML



SURVEY OF 6.000 ACRES OUT OF
 THE HAROLD AND PATRICIA HEILMAN
 TRUSTEES OF THE HEILMAN FAMILY TRUST
 ORIGINAL 35.147 ACRES
 OFFICIAL RECORD 298, PAGE 193
 VIRGINIA MILITARY SURVEY 3220
 JEFFERSON TOWNSHIP
 LOGAN COUNTY, OHIO



SURVEYED BY:
William K. Bruce
 WILLIAM K. BRUCE
 PROFESSIONAL SURVEYOR 7437
 AUGUST 30, 1999
 APPENDED JUNE 1, 2000
 COPYRIGHT 1999 BY:
 LEE SURVEYING & MAPPING CO., INC.
 117 North Madriver Street
 BELLEFONTAINE, OHIO 43311
 (937) 593-7335

2 WORKING DAYS
BEFORE YOU DIG
 CALL TOLL FREE **800-362-2764**
 OHIO UTILITIES PROTECTION SERVICE.

6821 3P

D 354 HEILM55 L-980-2
 HEILMAN2.DAT

REVISED 7-11-07 SMY/AL

Lee Surveying and Mapping Co., Inc.

Land Surveys • Topography • Subdivisions • Construction Layout

117 N. Madriver St.
Bellefontaine OH 43311



Phone: (937) 593-7335
Fax: (937) 593-7444

HEILMAN 0.199 ACRE

Lying in Virginia Military Survey 3220, Jefferson Township, Logan County, Ohio.

Being out of the Harold N. Heilman and Patricia M. Heilman, Trustees of the Heilman Family Trust dated June 13, 1995, 3.333 acre tract as deeded and described in Official Record 825, Page 868 of the Logan County Records of Deeds and being more particularly described as follows:

Commencing on a 1 inch iron pipe found in a monument box on the center-line of County Highway 55 at center-line Station 55 + 45 (Logan County Engineer's survey monument record).

THENCE, with the center-line of County Highway 55 (60 feet wide), N 5°-03'-45"E, a distance of 1574.59 feet to a railroad spike found.

THENCE, with the lines of the Eric Musser 6.000 acre tract (O.R. 472, Pg. 717), the following three courses:

S 84°-56'-14"E, a distance of 248.71 feet to a 5/8 inch iron rod found, passing a 5/8 inch iron rod found at 30.00 feet.

S 5°-03'-46"W, a distance of 183.08 feet to a 5/8 inch iron rod found.

S 84°-50'-15"E, a distance of 286.87 feet to a 5/8 inch iron rod set at the TRUE POINT OF BEGINNING.

THENCE, with the south line of the said 6.000 acre tract, S 84°-50'-15"E, a distance of 124.19 feet to a 5/8 inch iron rod found.

THENCE, with a west line of the Harold Heilman and Patricia Heilman, Trustees of the Heilman Family Trust dated June 13, 1995, 35.147 acre tract (O.R. 298, Pg. 193), S 5°-05'-51"W, a distance of 68.54 feet to a 5/8 inch iron rod set.

THENCE, N 85°-30'-30"W, a distance of 125.65 feet to a 5/8 inch iron rod set.

THENCE, N 6°-17'-22"E, a distance of 70.04 feet to the point of beginning.

Containing 0.199 acre.

The basis for bearings is the center-line of County Highway 55 at survey Station 55 + 45, being N 5°-03'-45"E, and all other bearings are from angles and distances measured in a field survey by Lee Surveying and Mapping Co., Inc. on July 6, 2007.

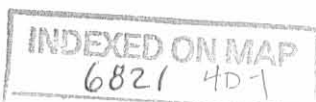


ORIGINAL STAMP IN GREEN

Description prepared by:

William K. Bruce
Professional Surveyor 7437
July 9, 2007

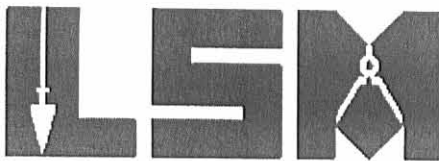
0980067



REV'D 7-11-07 S.M.J. OK
Lee Surveying and Mapping Co., Inc.

Land Surveys • Topography • Subdivisions • Construction Layout

117 N. Madriver St.
Bellefontaine OH 43311



Phone: (937) 593-7335
Fax: (937) 593-7444

**HEILMAN
3.802 ACRES**

Lying in Virginia Military Survey 3220, Jefferson Township, Logan County, Ohio.

Being out of the Harold Heilman and Patricia Heilman, Trustees of the Heilman Family Trust dated June 13, 1995, 35.147 acre tract as deeded and described in Official Record 298, Page 193 of the Logan County Records of Deeds and being more particularly described as follows:

Commencing on a 1 inch iron pipe found in a monument box on the center-line of County Highway 55 at center-line Station 55 + 45 (Logan County Engineer's survey monument card).

THENCE, with the center-line of County Highway 55 (60 feet wide), N 5°-03'-45"E, a distance of 1574.59 feet to a railroad spike found.

THENCE, with the lines of the Eric Musser 6.000 acre tract (O.R. 472, Pg. 717), the following three courses:

S 84°-56'-14"E, a distance of 248.71 feet to a 5/8 inch iron rod found, passing a 5/8 inch iron rod found at 30.00 feet.

S 5°-03'-46"W, a distance of 183.08 feet to a 5/8 inch iron rod found.

S 84°-50'-15"E, a distance of 411.06 feet to a 5/8 inch iron rod found at the TRUE POINT OF BEGINNING.

THENCE, with the lines of the said 6.000 acre tract, the following two courses:

S 84°-50'-15"E, a distance of 336.47 feet to a 5/8 inch iron rod set.

N 5°-03'-34"E, a distance of 436.98 feet to a 5/8 inch iron rod found.

THENCE, with the south line of the Dale Joshua Lovett 60 acre tract (O.R. 649, Pg. 301), S 85°-30'-34"E, a distance of 287.50 feet to a 5/8 inch iron rod set.

THENCE, S 5°-03'-34"W, a distance of 500.85 feet to a 5/8 inch iron rod set.

THENCE, N 84°-49'-44"W, a distance of 295.75 feet to a 5/8 inch iron rod set.

THENCE, N 88°-33'-53"W, a distance of 66.87 feet to a 5/8 inch iron rod set.

THENCE, N 85°-39'-26"W, a distance of 261.54 feet to a 5/8 inch iron rod set.

THENCE, with the east line of the Harold N. Heilman and Patricia M. Heilman, Trustees of the Heilman Family Trust dated June 13, 1995, 3.333 acre tract (O.R. 825, Pg. 868), N 5°-05'-51"E, a distance of 68.54 feet to the point of beginning.

Containing 3.802 acres.

The basis for bearings is the center-line of County Highway 55 at survey Station 55 + 45, being N 5°-03'-45"E, and all other bearings are from angles and distances measured in a field survey by Lee Surveying and Mapping Co., Inc. on July 6, 2007.

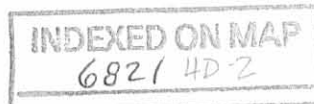


ORIGINAL STAMP IN GREEN

Description prepared by:

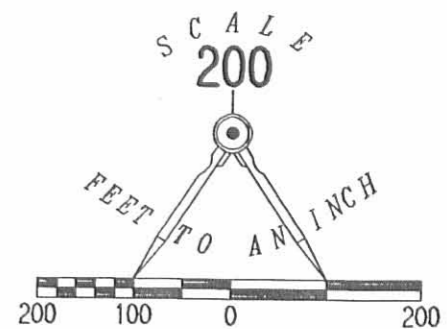
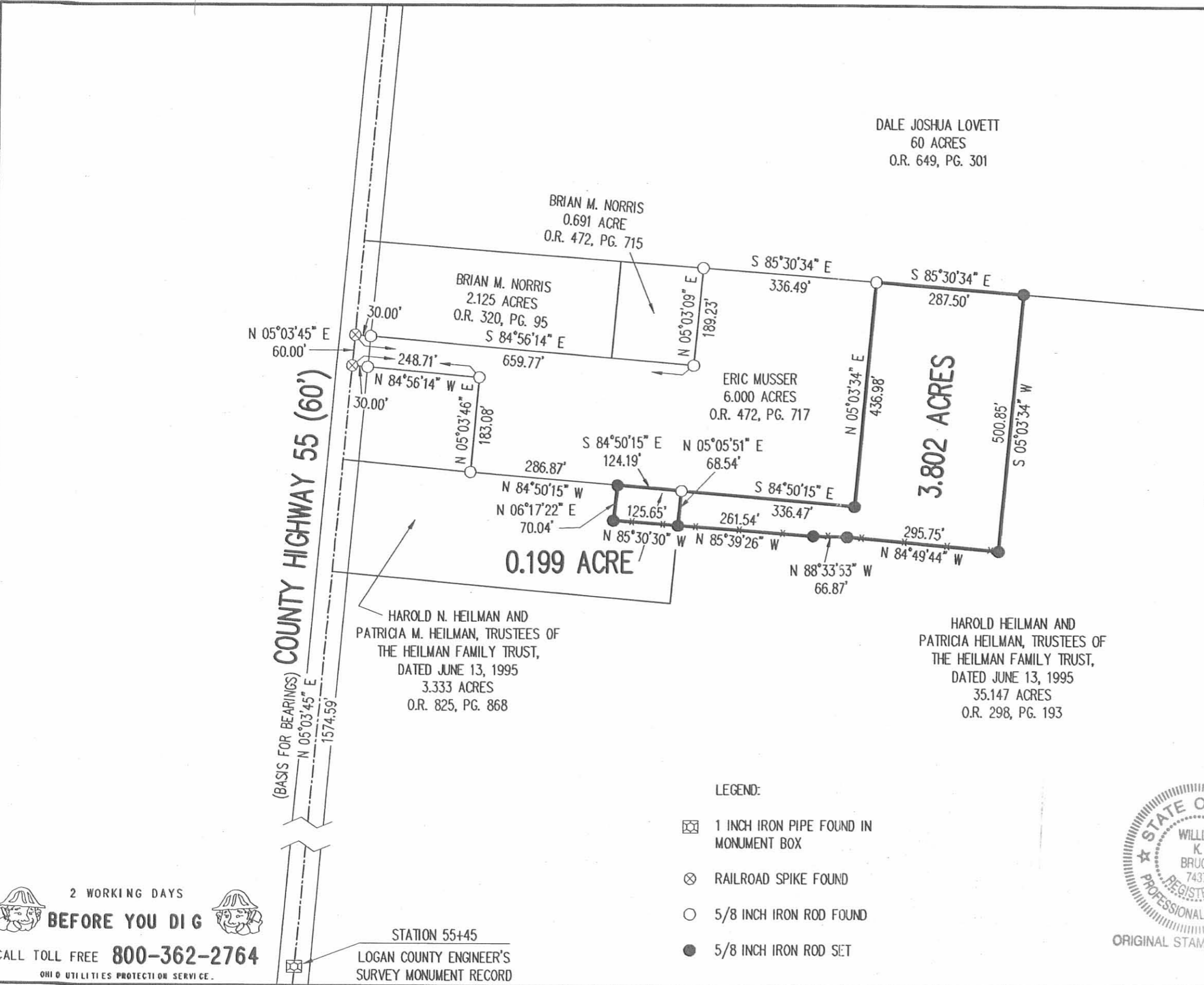
William K. Bruce

William K. Bruce
Professional Surveyor 7437
July 9, 2007



0980067

REC'D 7-11-07 SWM OK



SURVEY OF 3.802 ACRES OUT OF
THE HAROLD HEILMAN AND
PATRICIA HEILMAN, TRUSTEES OF
THE HEILMAN FAMILY TRUST,
DATED JUNE 13, 1995
35.147 ACRE TRACT
OFFICIAL RECORD 298, PAGE 193
AND 0.199 ACRE OUT OF THE
HAROLD N. HEILMAN AND
PATRICIA M. HEILMAN, TRUSTEES OF
THE HEILMAN FAMILY TRUST,
DATED JUNE 13, 1995
3.333 ACRE TRACT
OFFICIAL RECORD 825, PAGE 868
VIRGINIA MILITARY SURVEY 3220
JEFFERSON TOWNSHIP
LOGAN COUNTY, OHIO

SURVEYED BY:

William K. Bruce

WILLIAM K. BRUCE
PROFESSIONAL SURVEYOR 7437
JULY 6, 2007



ORIGINAL STAMP IN GREEN

COPYRIGHT 2007 BY:
LEE SURVEYING & MAPPING CO., INC.
117 North Madriver Street
BELLEFONTAINE, OHIO 43311
(937) 593-7335
surveys@lsmcinc.us
KSS D0707 0980067 L-980-3

LEGEND:

- ☒ 1 INCH IRON PIPE FOUND IN MONUMENT BOX
- ⊗ RAILROAD SPIKE FOUND
- 5/8 INCH IRON ROD FOUND
- 5/8 INCH IRON ROD SET

2 WORKING DAYS
BEFORE YOU DIG
CALL TOLL FREE 800-362-2764
OHIO UTILITIES PROTECTION SERVICE.

INDEXED ON MAP
6821 4P

REC'D 3-6-97 SMJ OL ✓



Lee Surveying and Mapping Co., Inc.



Farm Surveys • Lot Surveys • Topography • Subdivisions • Construction Layout

117 NORTH MADRIVER STREET
BELLEFONTAINE, OHIO 43311

(937) 593-7335
FAX (937) 593-7444

HEILMAN 2.125 ACRES

Lying in Virginia Military Survey 3220, Jefferson Township, Logan County, Ohio.

Being out of the Harold Heilman and Patricia Heilman, Trustees of the Heilman Family Trust original 35.147 acre tract as deeded and described in Official Record 298, Page 193 of the Logan County Records of Deeds and being more particularly described as follows:

Beginning at a railroad spike found on the center-line of County Highway 55 (60 feet wide) at the northeast corner of Belle View Estates Subdivision (Plat Cabinet A, Slide 677).

THENCE, with the center-line of County Highway 55, N 2°-00'-00" E, a distance of 9.60 feet to a railroad spike set at the TRUE POINT OF BEGINNING.

THENCE, with the center-line of County Highway 55, N 2°-00'-00" E, a distance of 182.65 feet to a railroad spike set.

THENCE, with the south line of the Robert J. Lovett, Jr. 60 acre tract (O.R. 39, Pg. 187), S 88°-34'-19" E, a distance of 500.02 feet to a 5/8 inch iron rod set.

THENCE, S 2°-00'-00" W, a distance of 187.64 feet to a 5/8 inch iron rod set.

THENCE, N 88°-00'-00" W, a distance of 500.00 feet to the point of beginning.

Containing 2.125 acres of which 0.126 acre is within the highway right-of-way.

The basis for bearings is the center-line of County Highway 55 being N 2°-00'-00" E, and all other bearings are from angles and distances measured in a field survey by Lee Surveying and Mapping Co., Inc. on March 6, 1997.

Description prepared by:

Jeffrey I. Lee
Professional Surveyor 6359
March 6, 1997



L 980

ORIGINAL STAMP IN GREEN

INDEXED ON MAP
682 | 5D -1

REC'D 10-8-96 SJY OK ✓



Lee Surveying and Mapping Co., Inc.



Farm Surveys • Lot Surveys • Topography • Subdivisions • Construction Layout

117 North Madriver Street
Bellefontaine, Ohio 43311

Phone (937) 593-7335
Fax (937) 593-7444

HEILMAN 1.044 ACRES

Lying in Virginia Military Survey 3220, Jefferson Township, Logan County, Ohio.

Being out of the Harold Heilman and Patricia Heilman, Trustees of the Heilman Family Trust original 35.147 acre tract as deeded and described in Official Record 298, Page 193 of the Logan County Records of Deeds and being more particularly described as follows:

Beginning at a railroad spike found on the center-line of County Highway 55 (60 feet wide) at the northeast corner of Belle View Estates Subdivision (Plat Cabinet A, Slide 677).

THENCE, with the center-line of County Highway 55, S 2°-00'-00" W, a distance of 50.40 feet to a railroad spike set at the TRUE POINT OF BEGINNING.

THENCE, S 88°-00'-00" E, a distance of 248.71 feet to a 5/8 inch iron rod set.

THENCE, S 2°-00'-00" W, a distance of 183.08 feet to a 5/8 inch iron rod set.

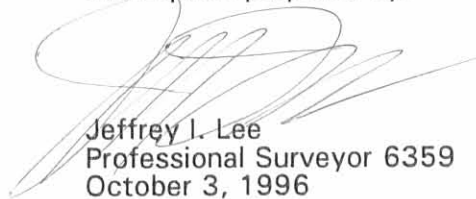
THENCE, with the north line of the Robert V. Hertenstein 3.333 acre tract (O.R. 288, Pg. 669), N 87°-54'-00" W, a distance of 248.71 feet to a railroad spike set.

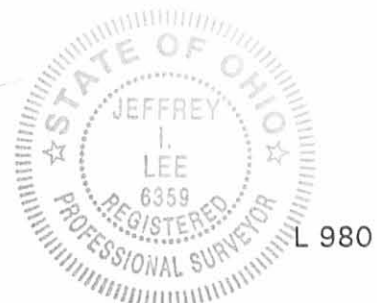
THENCE, with the center-line of County Highway 55, N 2°-00'-00" E, a distance of 182.65 feet to the point of beginning.

Containing 1.044 acres of which 0.126 acre is within the highway right-of-way.

The basis for bearings is the center-line of County Highway 55 being N 2°-00'-00" E, and all other bearings are from angles and distances measured in a field survey by Lee Surveying and Mapping Co., Inc. on September 23, 1996.

Description prepared by:

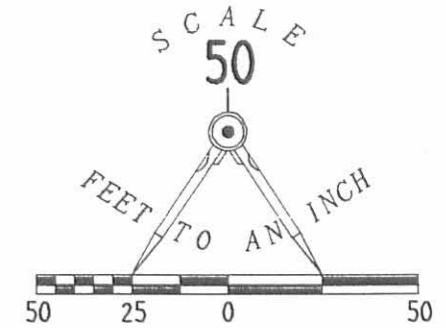

Jeffrey I. Lee
Professional Surveyor 6359
October 3, 1996



ORIGINAL STAMP IN GREEN

INDEXED ON MAP
682 | 50-2

ROBERT J. LOVETT, JR.
60 ACRES
O.R. 39. PG. 187



2.125 ACRES
OF WHICH 0.126 ACRE IS WITHIN
HIGHWAY RIGHT-OF-WAY

HAROLD & PATRICIA HEILMAN
TRUSTEES OF THE HEILMAN FAMILY TRUST
35.147 ACRES
O.R. 298. PG. 193

**BOUNDARY SURVEY OF A 2.125 ACRE TRACT
AND A 1.044 ACRE TRACT OUT OF THE
HAROLD AND PATRICIA HEILMAN
TRUSTEES OF THE HEILMAN FAMILY TRUST
ORIGINAL 35.147 ACRES
OFFICIAL RECORD 298. PAGE 193
VIRGINIA MILITARY SURVEY 3220
JEFFERSON TOWNSHIP
LOGAN COUNTY, OHIO**

LEGEND

- 5/8" IRON ROD SET
- 5/8" IRON ROD FOUND
- ⊕ RAILROAD SPIKE SET
- ⊗ RAILROAD SPIKE FOUND
- ⊙ 1" IRON PIPE FOUND
IN MONUMENT BOX



ORIGINAL STAMP IN GREEN

SURVEYED BY:

Jeffrey I. Lee
JEFFREY I. LEE
PROFESSIONAL SURVEYOR 6359
SEPTEMBER 23, 1996
REVISED MARCH 6, 1997

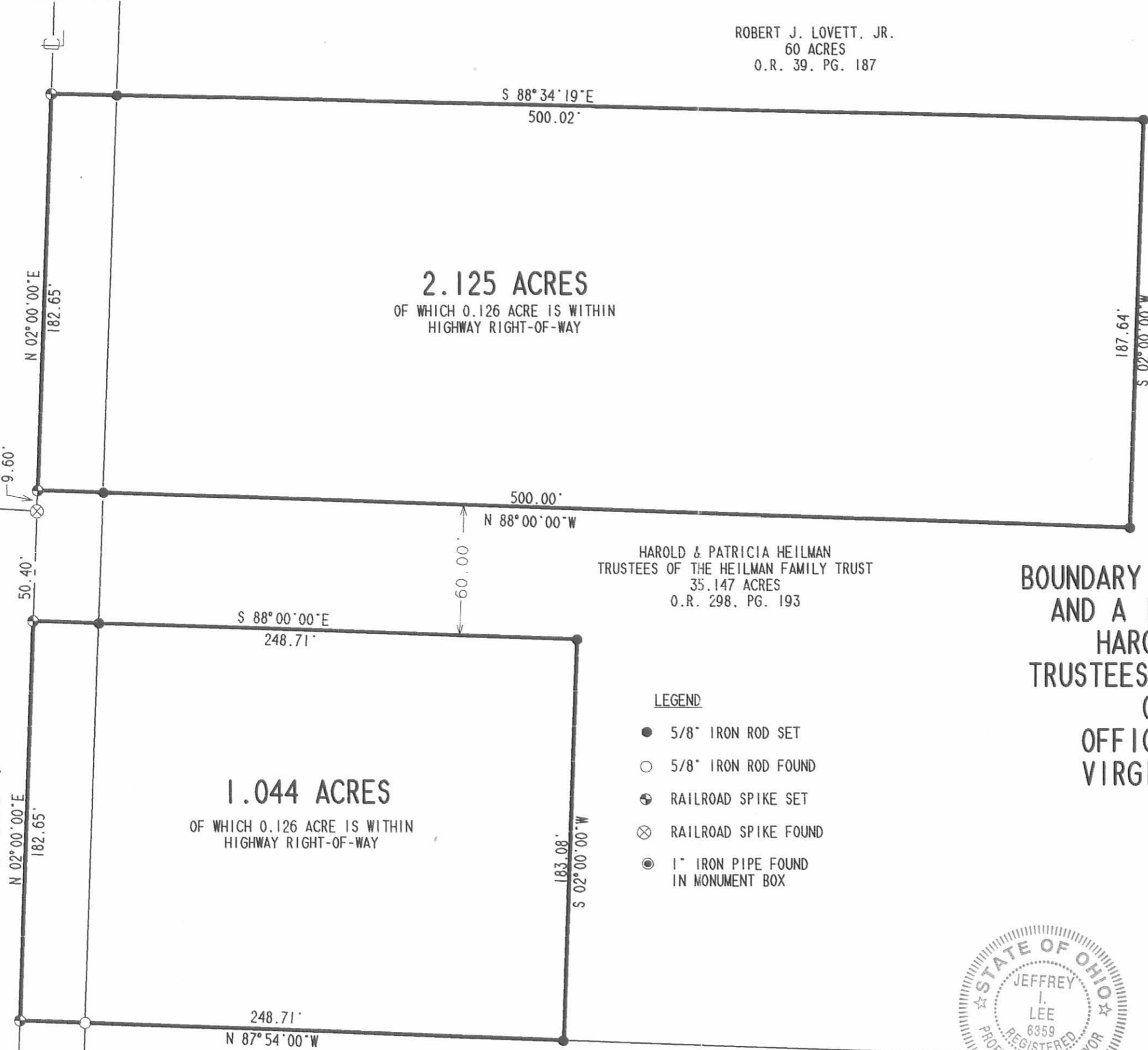
COPYRIGHT 1996 BY:
LEE SURVEYING & MAPPING CO., INC.
117 North Madriver Street
BELLEFONTAINE, OHIO 43311
(513) 593-7335

D 287 HEILMAN2

L-980-3

LOT 1
BELLE VIEW ESTATES SUBDIVISION
PLAT CABINET A, SLIDE 677

COUNTY HIGHWAY 55 (60')



1.044 ACRES
OF WHICH 0.126 ACRE IS WITHIN
HIGHWAY RIGHT-OF-WAY



2 WORKING DAYS

BEFORE YOU DIG

CALL TOLL FREE **800-362-2764**

OHIO UTILITIES PROTECTION SERVICE.

ROBERT V. HERTENSTEIN
3.333 ACRES
O.R. 288. PG. 669

INDEXED ON MAP
6821 5P

Rec'd 5-13-96 OK yj-1

LESLIE H. GEESLIN

REGISTERED SURVEYOR 5248

P. O. BOX 274

RUSHSVLVANIA, OHIO 43347

TELEPHONE: (513) 468-2793

KELLEY SURVEY

May 14, 1996

The following described real estate situated in the State of Ohio, County of Logan, Township of Jefferson, being part of Virginia Military Survey 3220 and more particularly described as follows:

Beginning at a railroad spike found in the centerline of County Highway 55 at the northwest corner of Henry & Helen Kelley Electric Co.'s 1.198 acre tract as described in O. R. Vol. 13 Page 900.

Thence with said centerline N. 2° 00' 00" E. 220.00 feet to a cap and nail set.

Thence S. 87° 58' 04" E. 660.00 feet to a 5/8 inch iron bar set, passing a 5/8 inch iron bar set at 30.00 feet.

Thence S. 2° 00' 00" W. 220.00 feet to a 5/8 inch iron bar set.

Thence with the north line of Henry & Helen Kelley Electric Co.'s 0.322 acre tract as described in O. R. Vol. 91 Page 516, said Co.'s 1.198 acre tract and said north line projected N. 87° 58' 04" W. 660.00 feet to the place of beginning, passing 5/8 inch iron bars found at 41.12 feet, 172.76 feet and 630.00 feet.

Containing 3.333 acres more or less, of which 0.152 acre is in the right of way of C. H. 55.

The above described 3.333 acre tract being part of Henry Kelley's 40 acre tract as described in D. B. Vol. 353 Page 106.

Bearings are based on an assumed bearing (N. 2° 00' 00" E.) for the centerline of C. H. 55 in this field survey by Leslie H. Geeslin on May 14, 1996.



Leslie H. Geeslin

INDEX ON MAP
6821 60

N

COUNTY HWY. 55
(60')

N. 2°00'00" E.
220.00'
(0.152 A)

HENRY KELLEY
40 AC.
D.B. VOL. 353 PG. 106

S. 87° 58' 04" E. 660.00'

3.333 AC.

S. 2°00'00" W.

N. 87° 58' 04" W. 660.00'

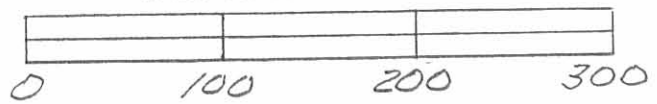
HENRY & HELEN KELLEY ELECTRIC CO., INC.
1.198 AC.
O.R. VOL. 13 PG 900

131.14
0.322 AC.
O.R. VOL. 91
PG 516

LEGEND:

- = R.R. SPK. FOUND
- = CAP & NAIL SET
- = 5/8" IRON BAR FD
- = 5/8" IRON BAR SET

SURVEY OF 3.333 AC. TRACT
IN T.M.S. 3220, JEFFERSON
TOWNSHIP, LOGAN COUNTY,
OHIO FOR HENRY KELLEY
MAY 14, 1996
SCALE: 1" = 100'



INDEX ON MAP
6821 UP

Leslie H. Geeslin
LESLIE H. GEESLIN
RUSHSVLVANIA, OHIO
PH 513 - 468 - 2793

Received 6-27-89

OK 6-28-89

Lee Surveying and Mapping Co.



Farm Surveys • Lot Surveys • Topography • Subdivisions • Construction Layout

855 EAST SANDUSKY AVENUE
BELLEFONTAINE, OHIO 43311

(513) 593-5780

CLAYTON M. LEE, P.S.
JEFFREY I. LEE, P.S.

H. & H. KELLY ELECTRIC COMPANY (0.322 ACRE)

Lying in V.M.S. 3220, Jefferson Township, Logan County, Ohio.

Being out of that original 40 acre tract in the name of Henry Kelly as deeded and described in Volume 353, Page 106 of the Logan County Records of Deeds and being adjacent to, and adjoining on the east, that 1.198 acre tract in the name of H. & H. Kelly Electric Company (O.R. 13, Page 900) and being more particularly described as follows:

Beginning at a 5/8" iron rod found marking the southeast corner of the said 1.198 acre tract and being on the north line of the Heilman 32.56 acres (Volume 370, Page 126).

THENCE, with the east line of the said 1.198 acre tract, N 2°-00' E, a distance of 107.00 feet to a 5/8" iron rod found at the northeast corner of said 1.198 acre tract.

THENCE, with the north line, extended easterly of said 1.198 acres, S 87°-58' E, a distance of 131.14 feet to a 5/8" iron rod (set).

THENCE, S 2°-00' W, a distance of 107.00 feet to a 5/8" iron rod set on the north line of aforesaid Heilman land.

THENCE, with said north line, N 87°-58' W, a distance of 131.14 feet to the point of beginning.

Containing 0.322 acre.

This description prepared from an actual field survey.

Basis for bearings: Center-line of County Highway 55 = N 2°-00' E.

Prepared by:

Clayton M. Lee

Clayton M. Lee

Registered Professional Surveyor No. 6181

June 26, 1989

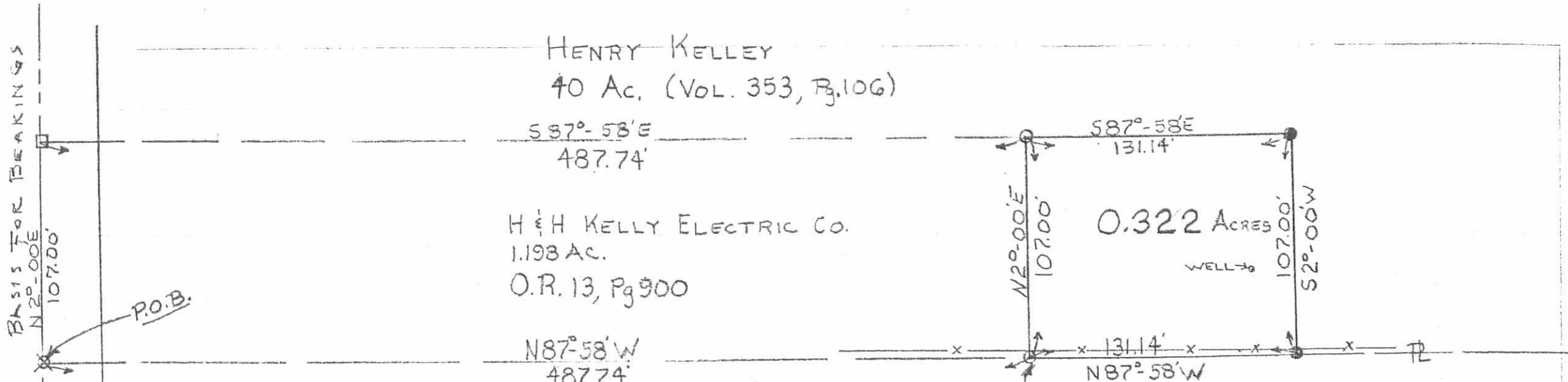


STAMP IN GREEN

L-980

INDEXED ON MAP
682/40

L-980-4



LEGEND

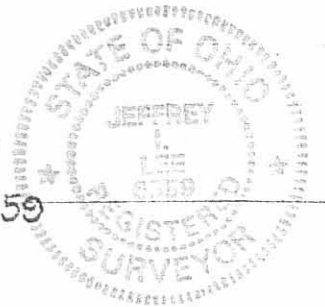
- - 5/8" IRON ROD SET
- - 5/8" IRON ROD FND
- ⊗ - 3/4" IRON ROD FND
- - R.R. SPIKE FND

HAROLD HEILMAN
 32.56 Ac.
 VOL. 370, Pg. 126

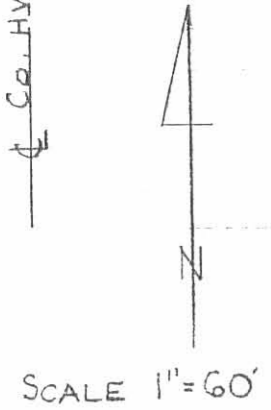
SURVEY OF 0.322 ACRES OUT OF THE ORIGINAL
 HENRY KELLEY 40 ACRE TRACT (VOL. 353, Pg. 106)
 V.M.S. 3220, JEFFERSON TWP, LOGAN COUNTY, OHIO

BEARINGS BASIS
 PREV. SURVEY OF GRANTOR'S
 PROPERTY (VOL. 353, Pg. 106)
 N87°-58'W (S. PL)

By: *[Signature]*
 JEFFREY L LEE
 REG. PROF. SURVEYOR 6359
 MAY 18, 1989



ORIGINAL STAMP IN GREEN



INDEXED ON MAP
 6821 TP

Lee Surveying & Mapping Co.
 855 E. Sandusky Ave.
 BELLEFONTAINE, OHIO 43311
 (513) 593-5780

L-980-4

Lee Surveying and Mapping Co.



Farm Surveys • Lot Surveys • Topography • Subdivisions • Construction Layout

855 EAST SANDUSKY AVENUE
BELLEFONTAINE, OHIO 43311

(513) 593-5780

CLAYTON M. LEE, P.S.
JEFFREY I. LEE, P.S.

DESCRIPTION NOT FOR TRANSFER.

LAND USE BREAK-DOWN OF THE KELLEY 40 ACRES

Lying in V.M.S. 3220, Jefferson Township, Logan County, Ohio.

Being that 40 acre tract (40.027 actual) lying in the name of Henry and Helen Kelley as deeded and described in Volume 353, Page 106 of the Logan County Records of Deeds.

The commercial area of said 40.027 acres described as follows:

Beginning at a spike found on the center-line of County Road 55, marking the southwest corner of said 40.027 acres.

THENCE, with the said center-line of County Road 55, N 2°-00' E, a distance of 90.00 feet.

THENCE, parallel to the south property line, S 88°-04' E, a distance of 423.8 feet.

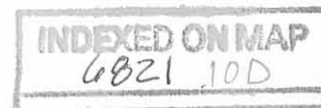
THENCE, parallel to the center-line of County Road 55, S 2°-00' W, a distance of 90.00 feet to the south line of said 40.027 acres.

THENCE, with said south line, N 88°-04' W, a distance of 423.8 feet to the point of beginning. Containing 0.876 acres in commercial, with 39.151 acres in agriculture area.

Prepared by:



Clayton M. Lee
Clayton M. Lee
Reg. Surveyor No. 6181
3-4-83



Co. Rd. 55

753.7

N 2° E

NORTH

SCALE 1" = 100'

2313.3'
(DEED)

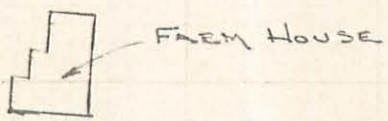
40.027 ACRES (TOTAL)
LESS 0.876

39.151 ACRES (AGRICULTURE)

753.7'

LAND USE SURVEY

HENRY & HELEN KELLY PROPERTY
40 ACRES (DEED) VOL. 353, PG. 106
V.M.S. 3220, JEFFERSON TWP.
LOGAN COUNTY, OHIO



FARM HOUSE



Jeffrey I. Lee

JEFFREY I. LEE
REG. SURVEYOR 6359
3-4-83

6821 10P

INDEXED ON MAP

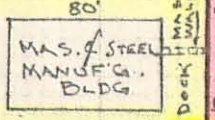
S 88°-04'E
423.8'



0.876 AC.
(COMMERCIAL)

STONE DRIVE 423.8'

STONE PARKING



80'
M.A.S. STEEL
MANUFACTG.
BLDG.

Deck
20'

FARM BLDG.

N 88°-04'W

2313.3' (DEED)



Lee Surveying and Mapping Co., Inc.



Farm Surveys • Lot Surveys • Topography • Subdivisions • Construction Layout

117 North Madriver Street
Bellefontaine, Ohio 43311

Phone (937) 593-7335
Fax (937) 593-7444

HEILMAN 1.050 ACRES

Lying in Virginia Military Survey 3220, Jefferson Township, Logan County, Ohio.

Being out of the Harold Heilman and Patricia Heilman, Trustees of the Heilman Family Trust original 35.147 acre tract as deeded and described in Official Record 298, Page 193 of the Logan County Records of Deeds and being more particularly described as follows:

Beginning at a railroad spike found on the center-line of County Highway 55 (60 feet wide) at the northeast corner of Belle View Estates Subdivision (Plat Cabinet A, Slide 677).

THENCE, with the center-line of County Highway 55, N 2°-00'-00" E, a distance of 9.60 feet to a railroad spike set at the TRUE POINT OF BEGINNING.

THENCE, with the center-line of County Highway 55, N 2°-00'-00" E, a distance of 182.65 feet to a railroad spike set.

THENCE, with the south line of the Robert J. Lovett, Jr. 60 acre tract (O.R. 39, Pg. 187), S 88°-34'-19" E, a distance of 248.72 feet to a 5/8 inch iron rod set.

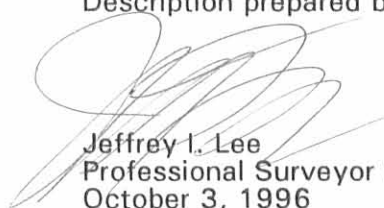
THENCE, S 2°-00'-00" W, a distance of 185.13 feet to a 5/8 inch iron rod set.

THENCE, N 88°-00'-00" W, a distance of 248.71 feet to the point of beginning.

Containing 1.050 acres of which 0.126 acre is within the highway right-of-way.

The basis for bearings is the center-line of County Highway 55 being N 2°-00'-00" E, and all other bearings are from angles and distances measured in a field survey by Lee Surveying and Mapping Co., Inc. on September 23, 1996.

Description prepared by:


Jeffrey I. Lee
Professional Surveyor 6359
October 3, 1996



L 980

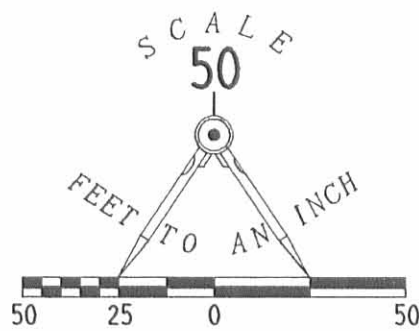
ORIGINAL STAMP IN GREEN

INDEXED ON MAP
6021 11D

LEGEND

- 5/8" IRON ROD SET
- 5/8" IRON ROD FOUND
- ⊕ RAILROAD SPIKE SET
- ⊗ RAILROAD SPIKE FOUND
- ⊙ 1" IRON PIPE FOUND IN MONUMENT BOX

ROBERT J. LOVETT, JR.
60 ACRES
O.R. 39, PG. 187



S 88°34'19"E
248.72'

1.050 ACRES
OF WHICH 0.126 ACRE IS WITHIN
HIGHWAY RIGHT-OF-WAY

185.13'
S 02°00'00"W

N 02°00'00"E
182.65'

248.71'
N 88°00'00"W

HAROLD & PATRICIA HEILMAN
TRUSTEES OF THE HEILMAN FAMILY TRUST
35.147 ACRES
O.R. 298, PG. 193

S 88°00'00"E
248.71'

1.044 ACRES
OF WHICH 0.126 ACRE IS WITHIN
HIGHWAY RIGHT-OF-WAY

183.08'
S 02°00'00"W

N 02°00'00"E
182.65'

248.71'
N 87°54'00"W

ROBERT V. HERTENSTEIN
3.333 ACRES
O.R. 288, PG. 669

**BOUNDARY SURVEY OF A 1.050 ACRE TRACT
AND A 1.044 ACRE TRACT OUT OF THE
HAROLD AND PATRICIA HEILMAN
TRUSTEES OF THE HEILMAN FAMILY TRUST
ORIGINAL 35.147 ACRES
OFFICIAL RECORD 298, PAGE 193
VIRGINIA MILITARY SURVEY 3220
JEFFERSON TOWNSHIP
LOGAN COUNTY, OHIO**

SURVEYED BY:

JEFFREY I. LEE
PROFESSIONAL SURVEYOR 6359
SEPTEMBER 23, 1996

COPYRIGHT 1996 BY:
LEE SURVEYING & MAPPING CO., INC.
117 North Madriver Street
BELLEFONTAINE, OHIO 43311
(513) 593-7335



ORIGINAL STAMP IN GREEN

INDEXED ON MAP
6821 IIP

BELLE VIEW ESTATES SUBDIVISION
PLAT CABINET A, SLIDE 677

LOT 1

COUNTY HIGHWAY 55 (60')

2 WORKING DAYS

BEFORE YOU DIG

CALL TOLL FREE **800-362-2764**

OHIO UTILITIES PROTECTION SERVICE.

D 287 HEILMAN

L-980-3

Lee Surveying and Mapping Co.



Farm Surveys • Lot Surveys • Topography • Subdivisions • Construction Layout

855 EAST SANDUSKY AVENUE
BELLEFONTAINE, OHIO 43311

(513) 593-5780

CLAYTON M. LEE, P.S.
JEFFREY I. LEE, P.S.

KELLY 1.198 ACRES

Lying in V.M.S. 3220, Jefferson Township, Logan County, Ohio.

Being out of the southwest corner of that 40 acres deeded and described in Volume 353, Page 106 of the Logan County Records of Deeds and being more particularly described as follows:

Beginning at a 3/4" iron rod found on the center-line of County Road 55 marking the southwest corner of said 40 acre tract (also being the northwest corner of the Harold N. Heilman 32.56 acres, Volume 370, Page 126).

THENCE, with the center-line of County Road 55, N 2°-00' E, a distance of 107.00 feet to a railroad spike (Set).

THENCE, parallel to the south property line, S 87°-58' E, a distance of 487.74 feet to a 5/8" iron rod (Set).

THENCE, parallel to County Road 55, S 2°-00' W, a distance of 107.00 feet to a 5/8" iron rod set on the grantor's south property line.

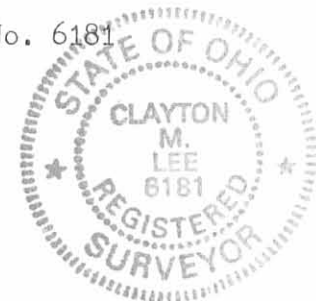
THENCE, with said property line, N 87°-58' W, a distance of 487.74 feet to the point of beginning.

Containing 1.198 acres.

Prepared by:

Clayton M. Lee
Professional Surveyor No. 6181
December 2, 1985

This description prepared from an actual field survey.



ORIGINAL STAMP IN GREEN

L-980

INDEXED ON MAP
6821 00

INDEXED ON MAP
68218P

HENRY KELLEY
40 AC. (VOL. 353, PG 106)

S 87°-58' E

487.74'

1.198 ACRES

S 2°-00' W
107.00'

N 87°-58' W

487.74'

PROPERTY LINE

HAROLD HEILMAN
32.56 ACRES
VOL. 370, PG. 126

LEGEND

- - 5/8" IRON ROD SET
- ⊙ - 3/4" IRON ROD FOUND
- - RR SPIKE SET

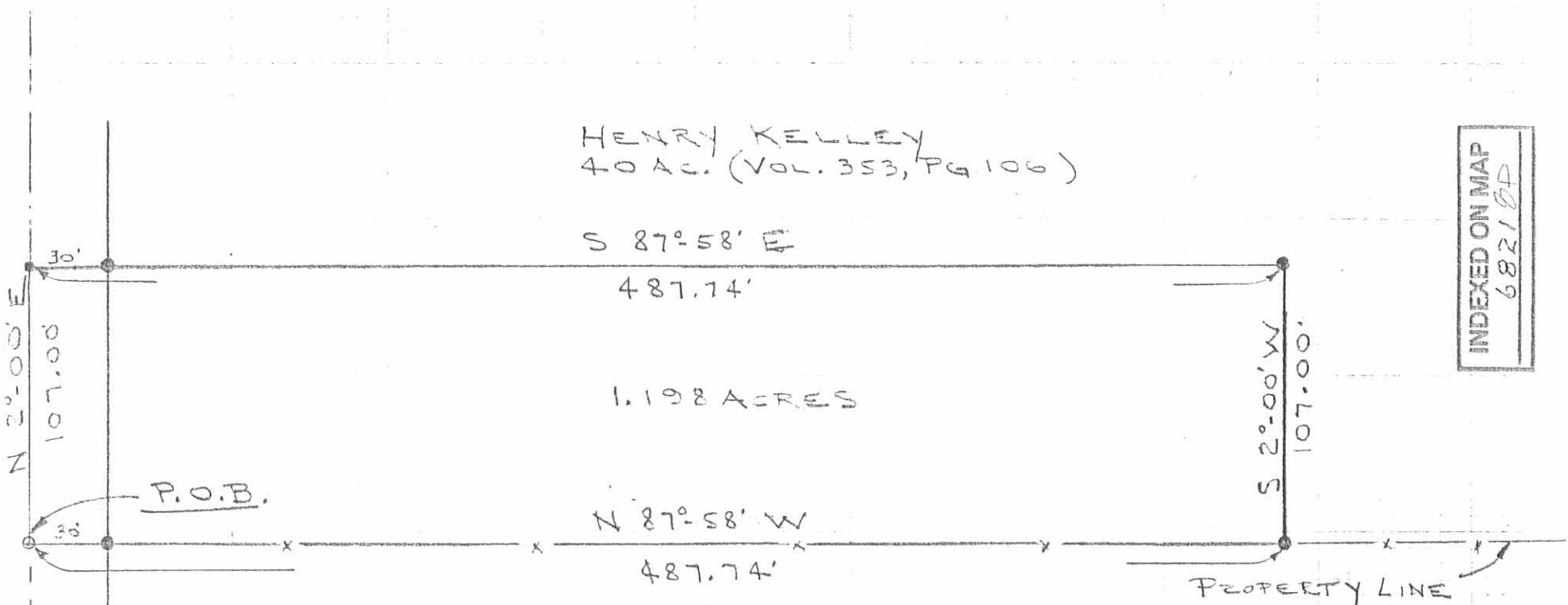
SURVEY OF 1.198 ACRES OF THE
HENRY KELLEY 40 ACRE TRACT (VOL. 353, PG. 106)
V.M.S. 3220, JEFFERSON TWP, LOGAN COUNTY, OHIO

BEARINGS BASIS
PREV. SURVEY OF GRANTOR'S
PROPERTY (VOL. 353, PG. 106)

By: Jeffrey I. Lee
JEFFREY I. LEE
PROF. SURVEYOR 6359
NOV. 27, 1985



ORIGINAL STAMP IN GREEN



CO. HWY. 55
107.00'
N

P.O.B.

SCALE - 1" = 60'

Lee Surveying and Mapping Co., Inc.

Land Surveys • Topography • Subdivisions • Construction Layout

117 N. Madriver St.
Bellefontaine OH 43311



Phone: (937) 593-7335
Fax: (937) 593-7444

HEILMAN 0.691 ACRE

Lying in Virginia Military Survey 3220, Jefferson Township, Logan County, Ohio.

Being out of the Harold & Patricia Heilman Trustees of the Heilman Family Trust original 35.147 acre tract as deeded and described in Official Record 298, Page 193 of the Logan County Records of Deeds and being more particularly described as follows:

Beginning at a railroad spike found at the northeast corner of Lot 1 of the Belle View Estates Subdivision (Plat Cabinet A, Slide 677) and on the center-line of County Highway 55 (60 feet wide).

THENCE, with the center-line of County Highway 55, N 2°-00'-00" E, a distance of 9.60 feet to a railroad spike found.

THENCE, with the south line of the Brian M. Norris 2.125 acre tract (O.R. 320, Pg. 95), S 88°-00'-00" E, a distance of 500.00 feet to a 5/8 inch iron rod found at the TRUE POINT OF BEGINNING.

THENCE, with the east line of the said 2.125 acre tract, N 2°-00'-55" E, a distance of 187.61 feet to a 5/8 inch iron rod found.

THENCE, with the south line of the Robert J. Lovett, Jr. 60 acre tract (O.R. 39, Pg. 187), S 88°-34'-19" E, a distance of 159.80 feet to a 5/8 inch iron rod set.

THENCE, S 2°-00'-00" W, a distance of 189.21 feet to a 5/8 inch iron rod set.

THENCE, N 88°-00'-00" W, a distance of 159.84 feet to the point of beginning.

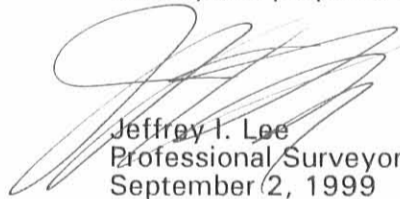
Containing 0.691 acre.

The basis for bearings is the center-line of County Highway 55 being N 2°-00'-00" E, and all other bearings are from angles and distances measured in a field survey by Lee Surveying and Mapping Co., Inc. on August 30, 1999.

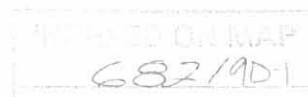


ORIGINAL STAMP IN GREEN

Description prepared by:


Jeffrey I. Lee
Professional Surveyor 6359
September 2, 1999

L-980



REC'D 9-13-99 SMJ DLK

Lee Surveying and Mapping Co., Inc.

Land Surveys • Topography • Subdivisions • Construction Layout

117 N. Madriver St.
Bellevue OH 43311



Phone: (937) 593-7335
Fax: (937) 593-7444

Lying in the Virginia Military Survey 3220, Jefferson Township, Logan County, Ohio.

Reserving a 60 feet wide ingress\egress easement over, under and through the above described 2.640 acre tract.

Beginning at a railroad spike found at the northeast corneo of Lot 1 of the Bele View Estates Subdivision (Plat Cabinet A, Slide 677) and on the center-lines of County Highway 55 (60 feet wide).

THENCE, with the center-line of County Highway 55, S 88°-00'00" W, a distance of 20.40 feet to a point at the TRUE POINT OF BEGINNING.

THENCE, with the center-line of the said easement, S 88°-00'-00" E, a distance of 659.84 feet to the terminus of this easement.

The basis for bearings is the center-line of County Highway 55 being N 2°-00'-00" E, and all other bearings are from angles and distances measured in a field survey by Lee Surveying and Mapping Co., Inc. on August 30, 1999.

Description prepared by:



ORIGINAL STAMP IN GREEN

Jeffrey I. Lee
Jeffrey I. Lee
Professional Surveyor 6359
September 2, 1999

L-980



Lee Surveying and Mapping Co., Inc.

Land Surveys • Topography • Subdivisions • Construction Layout

117 N. Madriver St.
Bellefontaine OH 43311



Phone: (937) 593-7335
Fax: (937) 593-7444

HEILMAN 2.640 ACRE

Lying in Virginia Military Survey 3220, Jefferson Township, Logan County, Ohio.

Being out of the Harold & Patricia Heilman Trustees of the Heilman Family Trust original 35.147 acre tract as deeded and described in Official Record 298, Page 193 of the Logan County Records of Deeds and being more particularly described as follows:

Beginning at a railroad spike found at the northeast corner of Lot 1 of the Belle View Estates Subdivision (Plat Cabinet A, Slide 677) and on the center-line of County Highway 55 (60 feet wide).

THENCE, with the center-line of County Highway 55, N 2°-00'-00" E, a distance of 9.60 feet to a railroad spike found.

THENCE, with the south line and the south line extended of the Brian M. Norris 2.125 acre tract (O.R. 320, Pg. 95), S 88°-00'-00" E, a distance of 659.84 feet to a 5/8 inch iron rod set, passing 5/8 inch iron rods found at 30.00 feet and 500.00 feet.

THENCE, S 2°-00'-00" W, a distance of 243.77 feet to a 5/8 inch iron rod found.

THENCE, with the north line of the Robert V. Hertenstein 3.333 acre tract (O.R. 288, Pg. 669), N 87°-54'-00" W, a distance of 411.06 feet to a 5/8 inch iron rod found.

THENCE, with the lines of the Janet S. Franz 1.044 acre tract (O.R. 405, Pg. 784), the following 2 courses:

N 1°-59'-12" E, a distance of 183.07 feet to a 5/8 inch iron rod found.

N 88°-00'-00" W, a distance of 248.71 feet to a railroad spike found, passing a 5/8 inch iron rod found at 218.71 feet.

THENCE, with the center-line of County Highway 55, N 2°-00'-00" E, a distance of 50.40 feet to the point of beginning.

Containing 2.640 acres of which 0.041 acre is within the highway right-of-way.

The basis for bearings is the center-line of County Highway 55 being N 2°-00'-00" E; and all other bearings are from angles and distances measured in a field survey by Lee Surveying and Mapping Co., Inc. on August 30, 1999.



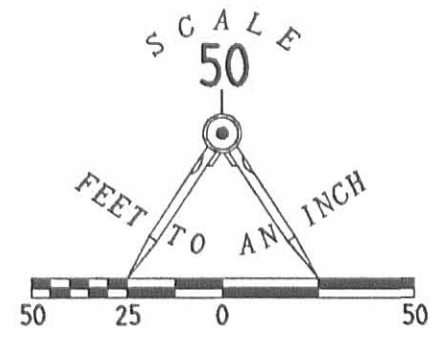
ORIGINAL STAMP IN GREEN

Description prepared by:

Jeffrey I. Lee
Jeffrey I. Lee
Professional Surveyor 6359
September 2, 1999

L-980

W. J. STON MAP
682/903



- LEGEND
- 5/8" IRON ROD SET
 - 5/8" IRON ROD FOUND
 - ⊗ RAILROAD SPIKE FOUND

HAROLD & PATRICIA HEILMAN
TRUSTEES OF THE HEILMAN FAMILY TRUST
35.147 ACRES
O.R. 298, PG. 193

BELLE VIEW ESTATES SUBDIVISION
PLAT CABINET A, SLIDE 677

COUNTY HIGHWAY 55 (60')

ROBERT J. LOVETT, JR.
60 ACRES
O.R. 39, PG. 187

BRIAN M. NORRIS &
CHERIE A. NORRIS
2.125 ACRE TRACT
O.R. 320, PG. 95

JANET S. FRANZ
1.044 ACRE TRACT
O.R. 405, PG. 784

ROBERT V. HERTENSTEIN
3.333 ACRES
O.R. 288, PG. 669

0.691 ACRES

2.640 ACRES
OF WHICH 0.041 ACRE IS WITHIN
THE HIGHWAY RIGHT-OF-WAY

BOUNDARY SURVEY OF TWO TRACTS
OUT OF THE
HAROLD AND PATRICIA HEILMAN
TRUSTEES OF THE HEILMAN FAMILY TRUST
ORIGINAL 35.147 ACRES
OFFICIAL RECORD 298, PAGE 193
VIRGINIA MILITARY SURVEY 3220
JEFFERSON TOWNSHIP
LOGAN COUNTY, OHIO



ORIGINAL STAMP IN GREEN

SURVEYED BY:
Jeffrey I. Lee
JEFFREY I. LEE
PROFESSIONAL SURVEYOR 6359
AUGUST 30, 1999

COPYRIGHT 1999 BY:
LEE SURVEYING & MAPPING CO., INC.
117 North Madriver Street
BELLEFONTAINE, OHIO 43311
(937) 593-7335

2 WORKING DAYS
BEFORE YOU DIG
CALL TOLL FREE **800-362-2764**
OHIO UTILITIES PROTECTION SERVICE.

INDEXED ON MAP
682/9P

2-22-18

Lee Surveying and Mapping Co.

Land Surveys • Topography • Subdivisions • Construction Layout



117 N. Madriver St.
Bellefontaine OH 43311



Phone: (937) 593-7335
Fax: (937) 593-7444
surveys@lsminc.us

HEILMAN 15.894 ACRES

Lying in Virginia Military Survey 3220, Jefferson Township, Logan County, Ohio (all records referenced herein refer to the Logan County Records of Deeds).

Being out of the Patrick R. Heilman and Sandra D. Heilman 21.485 acre tract as deeded and described in Official Record 884, Page 300, Parcel I, all of the Patrick R. Heilman and Sandra D. Heilman 9.779 acre tract as deeded and described in Official Record 884, Page 300, Parcel II and part of the Patrick R. Heilman 3.134 acre tract as deeded and described in Official Record 1127, Page 444 and being more particularly described as follows:

Commencing at a 1 inch iron pipe found in a monument box on the center-line of County Highway 55 (60 feet wide) at Station 55 + 43 (Logan County Engineer's Field Book 607, Page 31);

THENCE, with the center-line of said County Highway 55, N 05°-03'-45"E, a distance of 688.35 feet to a point at a common corner to said 9.779 acre tract and the Blacklidge Family Realty, LLC, 4.795 acre tract as deeded and described in Official Record 981, Page 1, Tract I, at the **TRUE POINT OF BEGINNING**, said point being referenced by a railroad spike found bearing N 86°-43'-58"W, a distance of 0.22 feet;

THENCE, continuing with the center-line of said County Highway 55 and the westerly line of said 9.779 tract, N 05°-03'-45"E, a distance of 376.69 feet to a point, being a corner common to said 9.779 acre tract and the Reid Mohler Staten, Inc., 1.198 acre tract as deeded and described in Official Record 1167, Page 921, Tract One, said point referenced by a 3/4 inch iron pipe found bearing N 84°-49'-58"W, a distance of 0.36 feet and S 05°-03'-45"W, a distance of 559.94 feet from a railroad spike found at Station 71 + 68.6 (Logan County Engineer's Field Book 607, Page 32);

THENCE, with the north line of said 9.779 acre tract and the south line of said 1.198 acre tract and the south line of the Reid Mohler Staten, Inc., 0.322 acre tract as deeded and described in Official Record 1167, Page 921, Tract Two, S 84°-49'-58"E, a distance of 618.28 feet to a 5/8 inch iron rod found at a corner common to said 0.322 acre tract and said 21.485 acre tract, passing a 5/8 inch iron rod set at a distance of 30.00 feet and a 5/8 inch iron rod found at a distance of 487.74 feet;

INDEXED ON MAP
6821

Lee Surveying and Mapping Co.

Land Surveys • Topography • Subdivisions • Construction Layout

117 N. Madriver St.
Bellefontaine OH 43311



Phone: (937) 593-7335
Fax: (937) 593-7444
surveys@lsminc.us

THENCE, with a common line to said 0.322 acre and 21.845 acre tracts, N 05°-10'-09"E, a distance of 106.95 feet to a 5/8 inch iron rod found on the southerly line of said 3.134 acre tract;

THENCE, with a common line to said 0.322 acre and 3.134 acre tracts, N 84°-48'-13"W, a distance of 84.75 feet to a 5/8 inch iron rod set;

THENCE, with a new division line through said 3.134 acre tract, N 05°-12'-20"E, a distance of 149.93 feet to a 5/8 inch iron rod found at a common corner to said 3.134 acre tract and the Eric Musser and Holly Musser 0.199 acre tract as deeded and described in Official Record 884, Page 296, Tract II;

THENCE, with a common line to said 0.199 acre and 3.134 acre tracts, S 85°-30'-30"E, a distance of 125.63 feet to a 5/8 inch iron rod found at a common corner to said 0.199 acre and 21.485 acre tracts and the Eric Musser and Holly Musser 3.802 acre tract as deeded and described in Official Record 884, Page 296, Tract I;

THENCE, with common lines to said 3.802 acre and 21.485 acre tracts, the following three (3) courses:

- (1) S 85°-39'-26"E, a distance of 261.53 feet to a 5/8 inch iron rod found;
- (2) S 88°-33'-53"E, a distance of 66.87 feet to a 5/8 inch iron rod found;
and
- (3) S 84°-49'-45"E, a distance of 295.75 feet to a 5/8 inch iron rod found at a common corner to said 3.802 acre and 21.485 acre tracts;

THENCE, with new division lines through said 21.485 acre tract, the following three (3) courses:

- (1) S 84°-49'-45"E, a distance of 222.98 feet to a 5/8 inch iron rod set;
- (2) S 45°-05'-42"E, a distance of 186.75 feet to a 5/8 inch iron rod set;
and
- (3) S 11°-00'-51"E, a distance of 144.30 feet to a 5/8 inch iron rod set on a common line to said 21.485 acre tract and the Blacklidge Family Realty, LLC, 22.781 acre tract as deeded and described in Official Record 981, Page 907, Parcel I;



Lee Surveying and Mapping Co.

Land Surveys • Topography • Subdivisions • Construction Layout

117 N. Madriver St.
Bellefontaine OH 43311



Phone: (937) 593-7335
Fax: (937) 593-7444
surveys@lsminc.us

THENCE, with common lines to said 21.485 acre and 22.781 acre tracts, the following two (2) courses:

- (1) N 85°-30'-23"W, a distance of 690.26 feet to a 5/8 inch iron rod set;
- (2) N 85°-00'-55"W, a distance of 31.85 feet to a 5/8 inch iron rod found at the northeast corner of said 9.779 acre tract;

THENCE, with a common line to said 9.779 acre and 22.781 acre tracts, S 05°-06'-39"W, a distance of 505.67 feet to a 5/8 inch iron rod found on the northerly line of the Blackledge Family Realty, LLC, 9.203 acre tract as deeded and described in Official Record 981, Page 907, Parcel III;

THENCE, with a common line to said 9.779 acre and 9.203 acre tracts, N 86°-35'-01"W, a distance of 413.73 feet to a 1-1/4 inch iron pipe found on the easterly line of said 4.795 acre tract;

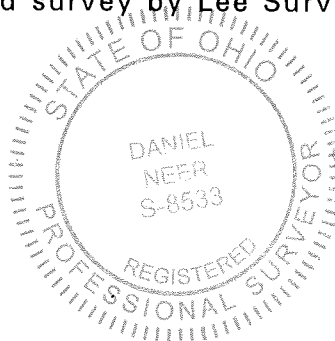
THENCE, with common lines to said 9.779 acre and 4.795 acre tracts, the following two (2) courses:

- (1) N 05°-01'-33"E, a distance of 159.69 feet to a 1-1/4 inch iron pipe found; and
- (2) N 86°-43'-58"W, a distance of 554.17 feet to the **POINT OF BEGINNING**, passing a 5/8 inch iron rod set at a distance of 524.16 feet.

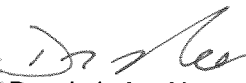
Containing 15.894 acres, more or less, of which 0.259 acre is within the highway right-of-way.

Property is subject to any and all previous easements and rights-of-way of record.

The basis for bearings, described herein, is the center-line of County Highway 55 between Station 55 + 43 and Station 71 + 68.6, being N 05°-03'-45"E, and all other bearings are from angles and distances measured in a field survey by Lee Surveying and Mapping Co. on February 9, 2018



Description prepared by:


Daniel A. Neer
Professional Surveyor No. 8533
February 13, 2018



9800118

2-22-18

Lee Surveying and Mapping Co.

Land Surveys • Topography • Subdivisions • Construction Layout



117 N. Madriver St.
Bellefontaine OH 43311



Phone: (937) 593-7335
Fax: (937) 593-7444
surveys@lsminc.us

HEILMAN 16.089 ACRES

Lying in Virginia Military Survey 3220, Jefferson Township, Logan County, Ohio (all records referenced herein refer to the Logan County Records of Deeds).

Being out of the Patrick R. Heilman and Sandra D. Heilman 21.485 acre tract as deeded and described in Official Record 884, Page 300, Parcel I and being more particularly described as follows:

Commencing at a 1 inch iron pipe found in a monument box on the center-line of County Highway 55 (60 feet wide) at Station 55 + 43 (Logan County Engineer's Field Book 607, Page 31);

THENCE, with the center-line of said County Highway 55, N 05°-03'-45"E, a distance of 688.35 feet to a point at a common corner to said Patrick R. Heilman and Sandra D. Heilman 9.779 acre tract as deeded and described in Official Record 884, Page 300, Parcel II and the Blacklidge Family Realty, LLC, 4.795 acre tract as deeded and described in Official Record 981, Page 1, Tract I, being referenced by a railroad spike found bearing N 86°-43'-58"W, a distance of 0.22 feet;

THENCE, with common lines to said 9.779 acre and 4.795 acre tracts, the following two (2) courses:

(1) S 86°-43'-58"E, a distance of 554.17 feet to a 1-1/4 inch iron pipe found, passing a 5/8 inch iron rod set at a distance of 30.01 feet; and

(2) S 05°-01'-33"W, a distance of 159.69 feet to a 1-1/4 inch iron pipe found at the northwest corner of the Blacklidge Family Realty, LLC, 9.203 acre tract as deeded and described in Official Record 981, Page 907, Parcel III;

THENCE, with a common line to said 9.779 acre and 9.203 acre tracts, S 86°-35'-01"E, a distance of 413.73 feet to a 5/8 inch iron rod found at the southwest corner of the Blacklidge Family Realty, LLC, 22.781 acre tract as deeded and described in Official Record 981, Page 907, Parcel I;

THENCE, with a common line to said 9.779 acre and 22.781 acre tracts, N 05°-06'-39"E, a distance of 505.67 feet to a 5/8 inch iron rod found on a southerly line of said 21.485 acre tract;

INDEXED ON MAP
1282

Lee Surveying and Mapping Co.

Land Surveys • Topography • Subdivisions • Construction Layout

117 N. Madriver St.
Bellefontaine OH 43311



Phone: (937) 593-7335
Fax: (937) 593-7444
surveys@lsminc.us

THENCE, with common lines to said 21.485 acre and 22.781 acre tract, the following two (2) courses:

(1) S 85°-00'-55"E, a distance of 31.85 feet to a 5/8 inch iron rod set; and

(2) S 85°-30'-23"E, a distance of 690.26 feet to a 5/8 inch iron rod set at the **TRUE POINT OF BEGINNING**;

THENCE, with a new division line through said 21.485 acre tract, the following three (3) courses:

(1) N 11°-00'-51"W, a distance of 144.30 feet to a 5/8 inch iron rod set;

(2) N 45°-05'-42"W, a distance of 186.75 feet to a 5/8 inch iron rod set; and

(3) N 84°-49'-45"W, a distance of 222.98 feet to a 5/8 inch iron rod found at a common corner to said 21.485 acre tract and the Eric Musser and Holly Musser 3.802 acre tract as deeded and described in Official Record 884, Page 296, Tract I;

THENCE, with a common line to said 21.485 acre and 3.802 acre tracts, N 05°-03'-34"E, a distance of 500.85 feet to a 5/8 inch iron rod found on the south line of the Dale Joshua Lovett, 60 acre tract as deeded and described in Official Record 649, Page 301;

THENCE, with a common line to said 21.485 acre and 60 acre tracts, S 85°-30'-34"E, a distance of 1043.03 feet to a 5/8 inch iron rod found on the west line of the Pin High Farm LLC, 150.584 acre tract as deeded and described in Official Record 1095, Page 540;

THENCE, with a common line to said 21.485 acre and 150.584 acre tracts, S 05°-47'-00"W, a distance of 753.07 feet to a 6 inch wood post found at the northeast corner of said 22.781 acre tract;

THENCE, with common lines to said 21.845 acre and 22.781 acre tracts, the following two (2) courses:

(1) N 86°-58'-50"W, a distance of 417.79 feet to a 5/8 inch iron rod found; and



Lee Surveying and Mapping Co.

Land Surveys • Topography • Subdivisions • Construction Layout

117 N. Madriver St.
Bellefontaine OH 43311



Phone: (937) 593-7335
Fax: (937) 593-7444
surveys@lsminc.us

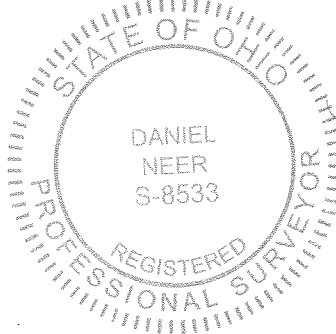
(2) N 85°-30'-23"W, a distance of 209.63 feet to the **POINT OF BEGINNING**;

Containing 16.089 acres, more or less.

This parcel is to be attached to an adjoining tract of land and is not to be used as a separate and independent parcel.

Property is subject to any and all previous easements and rights-of-way of record.

The basis for bearings, described herein, is the center-line of County Highway 55 between Station 55 + 43 and Station 71 + 68.6, being N 05°-03'-45"E, and all other bearings are from angles and distances measured in a field survey by Lee Surveying and Mapping Co. on February 9, 2018



Description prepared by:

A handwritten signature in black ink that reads 'D. Neer'.

Daniel A. Neer
Professional Surveyor No. 8533
February 13, 2018

9800118



BASIS FOR BEARINGS:

THE BASIS FOR BEARINGS SHOWN HEREON IS THE CENTER-LINE OF COUNTY HIGHWAY 55, BEING, N 05°03'45" E. STATION 71+68.6

(LOGAN COUNTY ENGINEER'S FIELD BOOK 607, PAGE 32)

COUNTY HIGHWAY 55 (60')

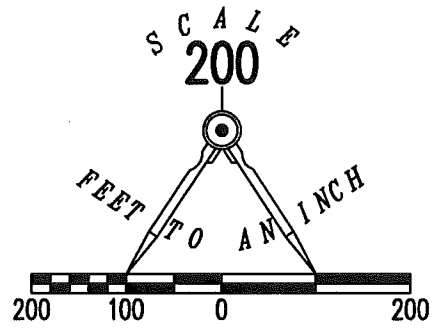
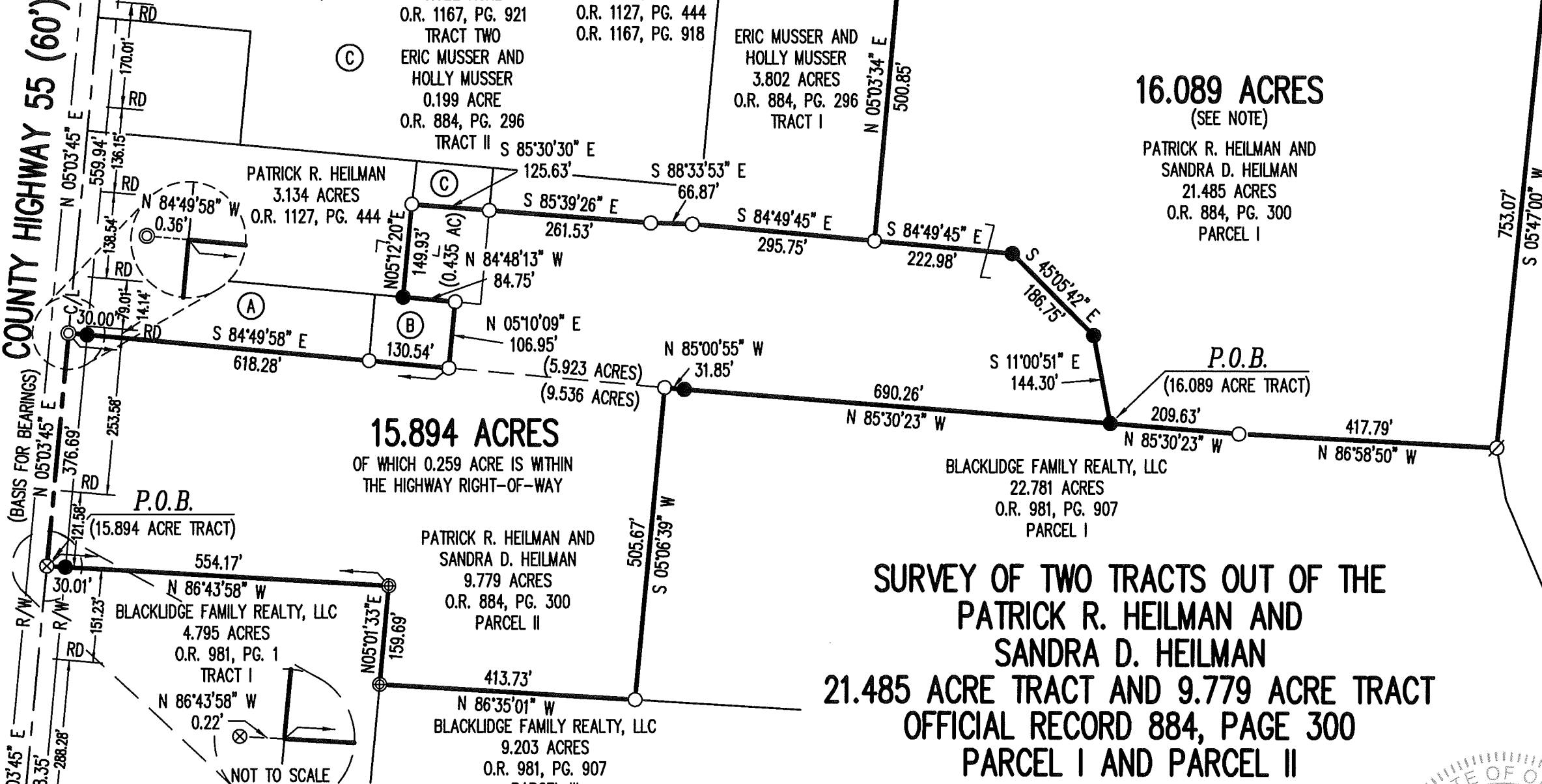
ADJOINERS:

- (A) REID MOHLER STATEN, INC. 1.198 ACRES
O.R. 1167, PG. 921 TRACT ONE
- (B) REID MOHLER STATEN, INC. 0.322 ACRE
O.R. 1167, PG. 921 TRACT TWO
- (C) ERIC MUSSER AND HOLLY MUSSER 0.199 ACRE
O.R. 884, PG. 296 TRACT II

DEED REFERENCES:

- O.R. 649, PG. 296
- O.R. 884, PG. 296
- O.R. 884, PG. 300
- O.R. 981, PG. 1
- O.R. 981, PG. 907
- O.R. 1095, PG. 540
- O.R. 1127, PG. 444
- O.R. 1167, PG. 918

DALE JOSHUA LOVETT
60 ACRES
O.R. 649, PG. 301



PIN HIGH FARM LLC
150.584 ACRES
O.R. 1095, PG. 540

LEGEND:

- ☒ 1 INCH IRON PIPE FOUND IN A MONUMENT BOX
- ⊗ RAILROAD SPIKE FOUND
- ⊙ 3/4 INCH IRON PIPE FOUND
- ⊕ 1-1/4 IRON PIPE FOUND
- ⊘ 6 INCH WOOD POST FOUND
- 5/8 INCH IRON ROD FOUND
- 5/8 INCH IRON ROD SET WITH PLASTIC I.D. CAP STAMPED "L-8533"

R/W = RIGHT-OF-WAY
C/L = CENTER-LINE
RD = RESIDENTIAL DRIVE
SURVEYED BY:

15.894 ACRES
OF WHICH 0.259 ACRE IS WITHIN THE HIGHWAY RIGHT-OF-WAY

16.089 ACRES
(SEE NOTE)

SURVEY OF TWO TRACTS OUT OF THE PATRICK R. HEILMAN AND SANDRA D. HEILMAN 21.485 ACRE TRACT AND 9.779 ACRE TRACT OFFICIAL RECORD 884, PAGE 300 PARCEL I AND PARCEL II AND THE PATRICK R. HEILMAN 3.134 ACRE TRACT OFFICIAL RECORD 1127, PAGE 444 VIRGINIA MILITARY SURVEY 3220 JEFFERSON TOWNSHIP LOGAN COUNTY, OHIO

ACCESS MANAGEMENT NOTE:

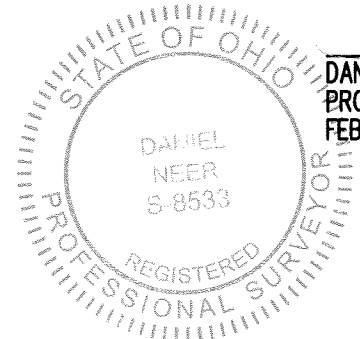
COUNTY HIGHWAY 55 IS CLASSIFIED AS A MINOR COLLECTOR ROAD. MINIMUM DRIVE SPACING IS 360'. MINIMUM STOPPING SIGHT DISTANCE IS >495 (55 MPH)

NOTE:

THE 16.089 ACRE PARCEL IS TO BE ATTACHED TO AN ADJOINING TRACT OF LAND AND IS NOT TO BE USED AS A SEPARATE AND INDEPENDENT PARCEL.

THIS SURVEY WAS PREPARED IN THE ABSENCE OF A COMPLETE AND ACCURATE TITLE SEARCH AND DOES NOT GUARANTEE TITLE.

2 WORKING DAYS
BEFORE YOU DIG
CALL TOLL FREE **800-362-2764**
OHIO UTILITIES PROTECTION SERVICE.



D. Neer
DANIEL A. NEER
PROFESSIONAL SURVEYOR NO. 8533
FEBRUARY 9, 2018

COPYRIGHT 2018 BY:
LEE SURVEYING & MAPPING CO.
117 North Madriver Street
BELLEFONTAINE, OHIO 43311
(937) 593-7335
WWW.LSMINC.US
surveys@lsminc.us

KSS D0118 9800118 L-980-3

INDEXED ON MAP
6821

4-24-18

Lee Surveying and Mapping Co.

✓ APPROVED Land Surveys • Topography • Subdivisions • Construction Layout

117 N. Madriver St.
Bellefontaine OH 43311



Phone: (937) 593-7335
Fax: (937) 593-7444
surveys@lsminc.us

HEILMAN 0.435 ACRE (FOR EXCEPTION DESCRIPTION PURPOSES ONLY)

Lying in Virginia Military Survey 3220, Jefferson Township, Logan County, Ohio (all records referenced herein refer to the Logan County Records of Deeds).

Being out of the Patrick R. Heilman 3.134 acre tract as deeded and described in Official Record 1127, Page 444 and being more particularly described as follows:

Commencing at a 1 inch iron pipe found in a monument box on the center-line of County Highway 55 (60 feet wide) at Station 55 + 43 (Logan County Engineer's Field Book 607, Page 31);

THENCE, with the center-line of said County Highway 55, N 05°-03'-45" E, a distance of 688.35 feet to a point at a common corner to the Patrick R. Heilman and Sandra D. Heilman 9.779 acre tract as deeded and described in Official Record 884, Page 300, Parcel II and the Blackledge Family Realty, LLC, 4.795 acre tract as deeded and described in Official Record 981, Page 1, Tract I, said point being referenced by a railroad spike found bearing N 86°-43'-58"W, a distance of 0.22 feet;

THENCE, continuing with said center-line of said County Highway 55 and the westerly line of said 9.779 tract, N 05°-03'-45" E, a distance of 376.69 feet to a point, being a corner common to said 9.779 acre tract and the Reid Mohler Staten, Inc., 1.198 acre tract as deeded and described in Official Record 1167, Page 921, Tract One, said point referenced by a 3/4 inch iron pipe found bearing N 84°-49'-58"W, a distance of 0.36 feet and S 05°-03'-45" W, a distance of 559.94 feet from a railroad spike found at Station 71 + 68.6 (Logan County Engineer's Field Book 607, Page 32);

THENCE, with the north line of said 9.779 acre tract and the south line of said 1.198 acre tract and the south line of the Reid Mohler Staten, Inc., 0.322 acre tract as deeded and described in Official Record 1167, Page 921, Tract Two, S 84°-49'-58" E, a distance of 618.28 feet to a 5/8 inch iron rod found at a corner common to said 0.322 acre tract and the Patrick R. Heilman and Sandra D. Heilman 21.485 acre tract as deeded and described in Official Record 884, Page 300, Parcel I, passing a 5/8 inch iron rod set at a distance of 30.00 feet and a 5/8 inch iron rod found at a distance of 487.74 feet;

THENCE, with a common line to said 0.322 acre and 21.845 acre tracts, N 05°-10'-09" E, a distance of 106.95 feet to a 5/8 inch iron rod found on the southerly line of said 3.134 acre tract at the **TRUE POINT OF BEGINNING**;

THENCE, with a common line to said 0.322 acre and 3.134 acre tracts, N 84°-48'-13"W, a distance of 84.75 feet to a 5/8 inch iron rod set;

THENCE, with a new division line through said 3.134 acre tract, N 05°-12'-20" E, a distance of 149.93 feet to a 5/8 inch iron rod found at a common corner to said 3.134 acre tract and the Eric Musser and Holly Musser 0.199 acre tract as deeded and described in Official Record 884, Page 296, Tract II;

THENCE, with a common line to said 0.199 acre and 3.134 acre tracts, S 85°-30'-30" E, a distance of 125.63 feet to a 5/8 inch iron rod found at a common corner to said 0.199 acre and 21.485 acre tracts and

INDEXED ON MAP
6021

Lee Surveying and Mapping Co.

Land Surveys • Topography • Subdivisions • Construction Layout

117 N. Madriver St.
Bellefontaine OH 43311



Phone: (937) 593-7335
Fax: (937) 593-7444
surveys@lsminc.us

the Eric Musser and Holly Musser 3.802 acre tract as deeded and described in Official Record 884, Page 296, Tract I;

THENCE, with common lines to said 3.134 acre and 21.485 acre tracts, the following two (2) courses:

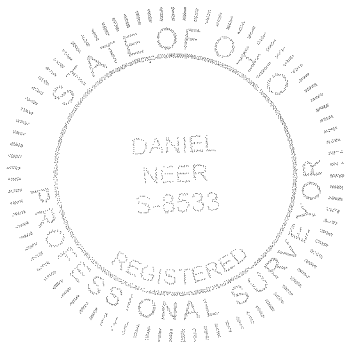
- (1) S 05°-05'-52" W, a distance of 151.48 feet to a 5/8 inch iron rod found;
- (2) N 84°-48'-13" W, a distance of 41.15 feet to the **POINT OF BEGINNING**.

Containing 0.435 acre, more or less, and is for exception description purposes only and is not to be used as a separate and independent parcel.

Property is subject to any and all previous easements and rights-of-way of record.

The basis for bearings, described herein, is the center-line of County Highway 55 between Station 55+43 and Station 71+68.6, being N 05°-03'-45"E, and all other bearings are from angles and distances measured in a field survey by Lee Surveying and Mapping Co. on February 9, 2018

Description prepared by:



A handwritten signature in black ink that reads 'D. A. Neer'.

Daniel A. Neer
Professional Surveyor No. 8533
April 18, 2018

9800118REV

INDEXED ON MAP
6021

BASIS FOR BEARINGS:

THE BASIS FOR BEARINGS SHOWN HEREON IS THE CENTER-LINE OF COUNTY HIGHWAY 55, BEING, N 05°03'45" E. STATION 71+68.6

ADJOINERS:

- (A) REID MOHLER STATEN, INC.
1.198 ACRES
O.R. 1167, PG. 921
TRACT ONE
- (B) REID MOHLER STATEN, INC.
0.322 ACRE
O.R. 1167, PG. 921
TRACT TWO
- (C) ERIC MUSSER AND HOLLY MUSSER
0.199 ACRE
O.R. 884, PG. 296
TRACT II

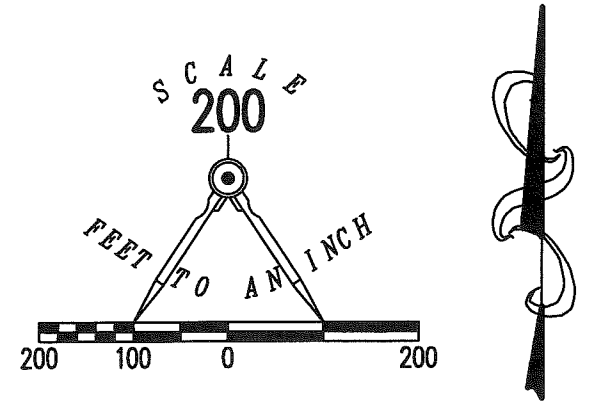
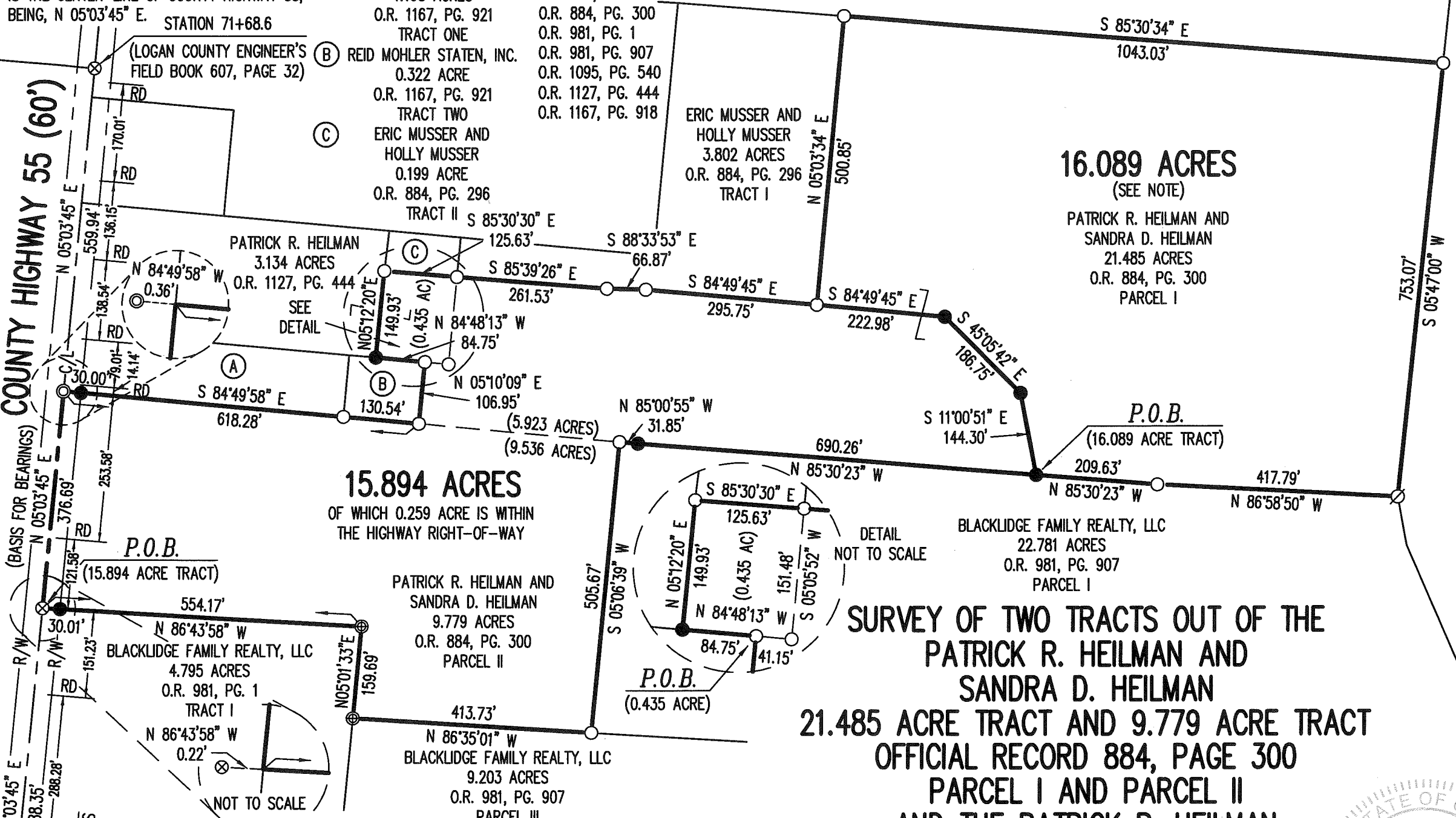
DEED REFERENCES:

- O.R. 649, PG. 296
- O.R. 884, PG. 296
- O.R. 884, PG. 300
- O.R. 981, PG. 1
- O.R. 981, PG. 907
- O.R. 1095, PG. 540
- O.R. 1127, PG. 444
- O.R. 1167, PG. 918

DALE JOSHUA LOVETT
69 ACRES
O.R. 649, PG. 301

COUNTY HIGHWAY 55 (60')

P.O.C. RD -688.35'
STATION 55+43
LOGAN COUNTY ENGINEER'S FIELD BOOK 607, PG. 31)



- LEGEND:**
- 1 INCH IRON PIPE FOUND IN A MONUMENT BOX
 - RAILROAD SPIKE FOUND
 - 3/4 INCH IRON PIPE FOUND
 - 1-1/4 INCH IRON PIPE FOUND
 - 6 INCH WOOD POST FOUND
 - 5/8 INCH IRON ROD FOUND
 - 5/8 INCH IRON ROD SET WITH PLASTIC I.D. CAP STAMPED "L-8533"
- R/W = RIGHT-OF-WAY
 C/L = CENTER-LINE
 RD = RESIDENTIAL DRIVE

SURVEYED BY:

 DANIEL A. NEER
 PROFESSIONAL SURVEYOR NO. 8533
 FEBRUARY 9, 2018
 REVISED APRIL 18, 2018 (TO DETAIL EXCEPTION)

COPYRIGHT 2018 BY:
LEE SURVEYING & MAPPING CO.
 117 North Madriver Street
 BELLEFONTAINE, OHIO 43311
 (937) 593-7335
 WWW.LSMINC.US
 surveys@lsminc.us

KSS D0118 9800118REV L-980-3

**SURVEY OF TWO TRACTS OUT OF THE
 PATRICK R. HEILMAN AND
 SANDRA D. HEILMAN
 21.485 ACRE TRACT AND 9.779 ACRE TRACT
 OFFICIAL RECORD 884, PAGE 300
 PARCEL I AND PARCEL II
 AND THE PATRICK R. HEILMAN
 3.134 ACRE TRACT
 OFFICIAL RECORD 1127, PAGE 444
 VIRGINIA MILITARY SURVEY 3220
 JEFFERSON TOWNSHIP
 LOGAN COUNTY, OHIO**

THIS SURVEY WAS PREPARED IN THE ABSENCE OF A COMPLETE AND ACCURATE TITLE SEARCH AND DOES NOT GUARANTEE TITLE.

2 WORKING DAYS
BEFORE YOU DIG
 CALL TOLL FREE **800-362-2764**
 OHIO UTILITIES PROTECTION SERVICE

ACCESS MANAGEMENT NOTE:
 COUNTY HIGHWAY 55 IS CLASSIFIED AS A MINOR COLLECTOR ROAD.
 MINIMUM DRIVE SPACING IS 360'.
 MINIMUM STOPPING SIGHT DISTANCE IS >495 (55 MPH)

NOTE:
 THE 16.089 ACRE PARCEL IS TO BE ATTACHED TO AN ADJOINING TRACT OF LAND AND IS NOT TO BE USED AS A SEPARATE AND INDEPENDENT PARCEL.

