

TRACT 'A'

Situated in V. M. S. 3439, Jefferson Twp., Logan County, Ohio and described as follows:

Beginning at a point which marks the intersection of the center-line of County Highway No. 25 with the center-line of State Highway No. 540.

THENCE, with center-line of County Highway No. 25, N 23° 28' W, a distance of 888.5 feet to a P. K. nail.

THENCE, S 83°-45' W, a distance of 258.1 feet to an iron rod. Setting an iron rod in the Right-of-Way line at 31.4 feet.

THENCE, S 23°-28' E, a distance of 882.1 feet to a P. K. nail set in the Center-line of State Highway No. 540. Setting an iron rod in the Right-of-Way line at 850.7 feet.

THENCE, with the center-line of State Highway No. 540, N 83°-45' E, a distance of 194.5 feet to a point marking an angle and shown on Logan County plan L-6A, Page 7 and designated Station 146+07.3.

THENCE, N 88°-47' E, a distance of 65.7 feet to the point of beginning. Containing 5.00 Acres.

Last previous Deed Reference Vol. 344, Page 926.

Clayton M. Lee

7169 1D-1

INDEXED ON MAP



TRACT 'B'

Situated in V. M. S. 3439, Jefferson Township, Logan County, Ohio and described as follows:

Beginning at a point in the center-line of State Highway No. 540. Said point lying Westerly, along the center-line, from the intersection of County Highway No. 25 a distance of 260.2 feet.

THENCE, N 23° -28' W, a distance of 882.1 feet to an iron rod. Setting an iron rod in the Right-of-Way line at 31.4 feet.

THENCE, S 83° -45' W, a distance of 258.5 feet to an iron rod.

THENCE, S 23° -28' E, a distance of 882.1 feet to a P. K. nail set in the center-line of State Highway No. 540. This point also lying in the center of a concrete bridge and being 12 feet west of the east end of the slab.

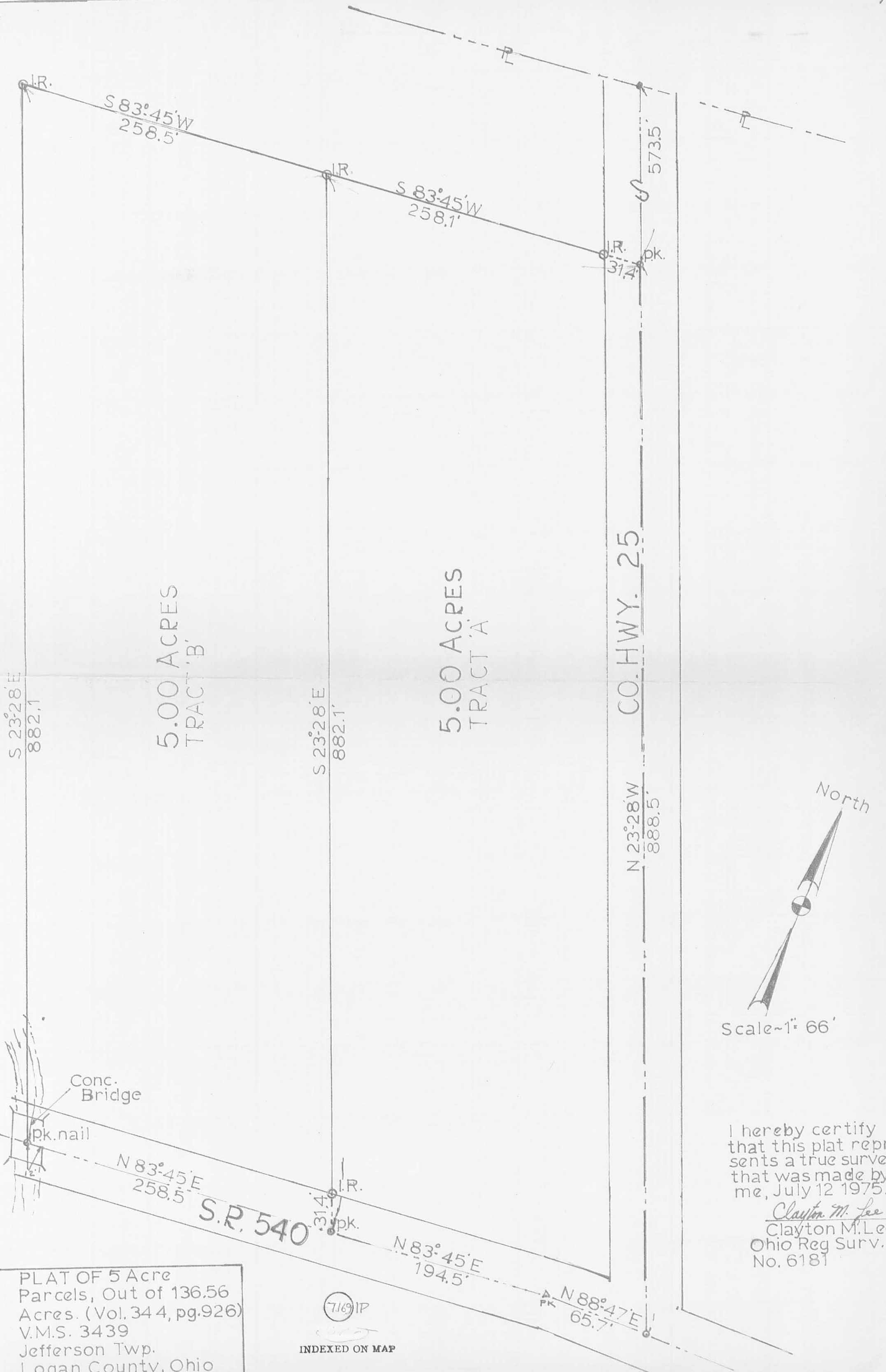
THENCE, with the center-line of State Highway No. 540, N 83° -45' E, a distance of 258.5 feet to the point of beginning. Containing 5.00 Acres.

Last previous Deed Reference Vol. 344, Page 926.

7169 1D-2

INDEXED ON MAP

Clayton M. Lee
Reg. Surv. # 6181

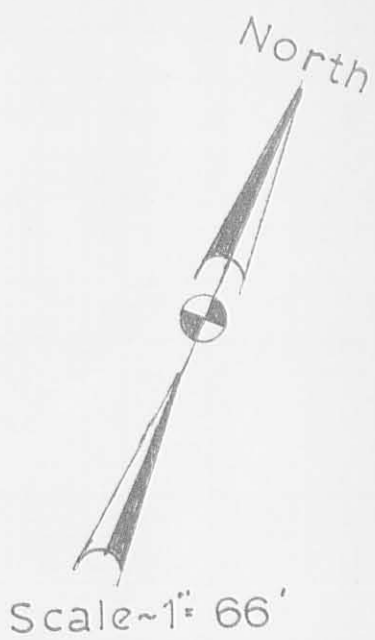


5.00 ACRES
TRACT 'B'

5.00 ACRES
TRACT 'A'

CO. HWY. 25

S.R. 540



I hereby certify
that this plat repre-
sents a true survey
that was made by
me, July 12 1975.
Clayton M. Lee
Clayton M. Lee
Ohio Reg Surv.
No. 6181

PLAT OF 5 Acre
Parcels, Out of 136.56
Acres. (Vol. 344, pg.926)
V.M.S. 3439
Jefferson Twp.
Logan County, Ohio

(7169)IP
INDEXED ON MAP