

Lee Surveying and Mapping Co.



Farm Surveys • Lot Surveys • Topography • Subdivisions • Construction Layout

855 EAST SANDUSKY AVENUE
BELLEFONTAINE, OHIO 43311

(513) 593-5780

CLAYTON M. LEE, P.S.
JEFFREY I. LEE, P.S.

F. BRUCE LILE SURVEY (1.47 ACRE)

Lying in V.M.S. 4477, Jefferson Township, Logan County, Ohio and being out of that original 21.43 acres deeded and described in Volume 329, Page 165 of the Logan County Records of Deeds and more particularly described as follows:

Beginning at an iron spike set on the center-line of County Highway 29 at the northeast corner of a 0.91 acre tract (Volume 349, Page 296) and lying southeasterly along said center-line a distance of 378.97 feet from the intersection with the center-line of Township Road 179.

THENCE, with the east line of the 0.91 acre tract, S 2°-45' W, a distance of 295.74 feet to an iron rod, passing an iron rod set on the road right-of-way line at 33.47 feet.

THENCE, S 82°-13'-30" E, a distance of 236.09 feet to an iron rod.

THENCE, N 2°-11' E, a distance of 181.07 feet to an iron spike set on the center-line of County Highway 29, passing an iron rod set on the road right-of-way line at 150.78 feet.

THENCE, with said center-line, N 60°-56' W, a distance of 326.25 feet to the point of beginning. Containing 1.47 acres.

Last previous deed reference: Volume 329, Page 165.

Surveyed by:

Clayton M. Lee

Clayton M. Lee
Reg. Surveyor No. 6181
6-25-79



INDEXED ON MAP

BY _____ DATE _____ SUBJECT _____
CHKD. BY _____ DATE _____

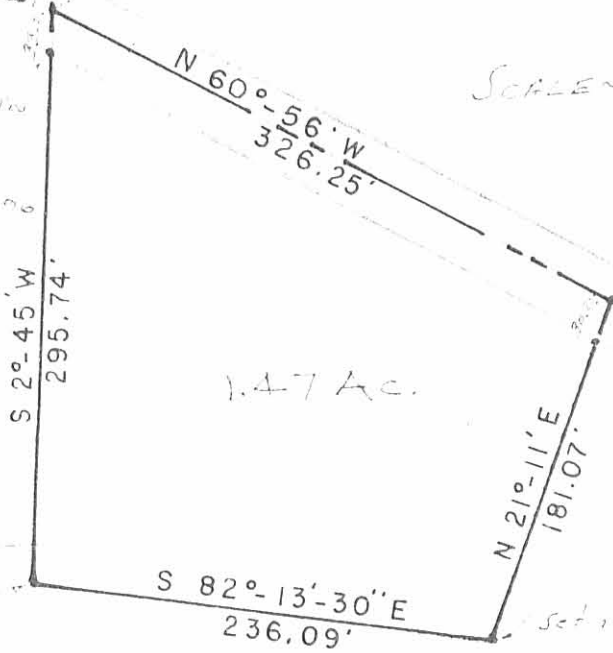
V.M.S. 5864
V.M.S. 4477

Q.C.H. 29
378.97



SCALE = 1" = 100'

Set from
0.91 Ac.
Vol. 348, Pg. 206



SUNRISE ESTATES
SUBDIVISION

SURVEY OF 1.47 ACRES OUT OF
THE F.B. LEE LANDS (VOL. 314, 314.3 AC, VOL. 329, PG. 165)
V.M.S. 4477, JEFFERSON TWP.
LOGAN COUNTY, OHIO

7268 1P

INDEXED ON MAP



Surveyed by:
Clayton M. Lee
Clayton M. Lee
Lic. No. 67839
6-11-77

Lee Surveying & Mapping Co.
855 E. Sandusky Ave.
BELLEFONTAINE, OHIO 43311
(513) 593-5780