

4<sup>th</sup> Mo. (April) 11<sup>th</sup> 1825 Survey & 25<sup>th</sup>

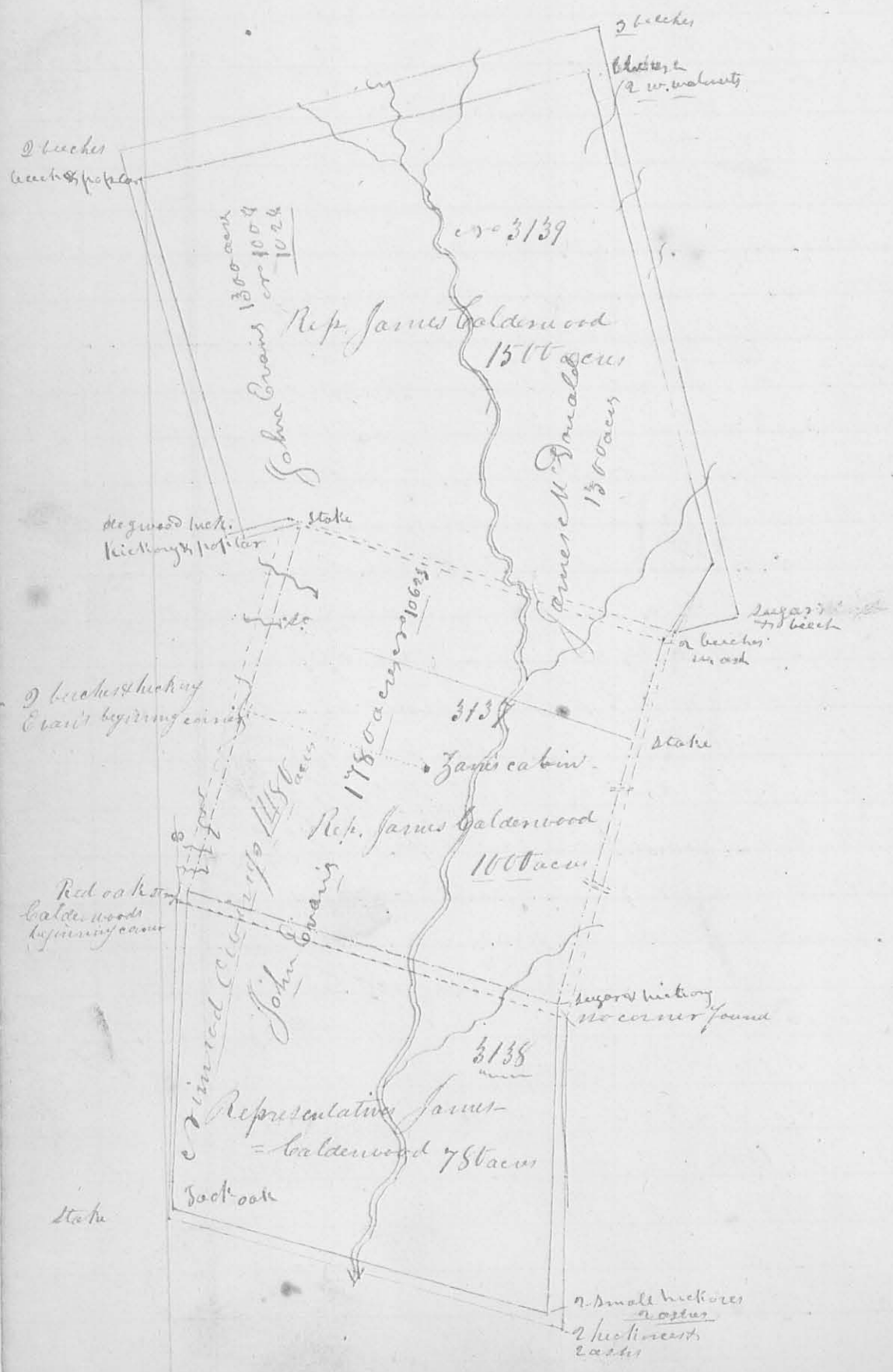
9188 26

containing original survey

The Lessee of Vinced C. Wing  
Plaintiffvs. { Lawson Curtis et. al.  
DefendantsAnd The Lessee of James M. Donald  
Plaintiffvs. { Jesse Garwood et. al.  
Defendants.

In obedience to an order of survey to me directed from the United States 7<sup>th</sup> Circuit Court, Ohio District in the above case I proceeded on the 11<sup>th</sup> day of April A.D. 1825 to execute a survey agreeably to the directions of the parties interested, beginning at a block, admitted by the parties to be the place where the cabin stood in which Isaac Kane formerly lived on Mad River, thence  $\text{N } 75^{\circ} \text{ W } 206$  poles (passing 2 beeches & hickory at 200, marked as a corner corresponding with Crain's beginning corner) to 2 beeches bearing some ancient land marks, said to be in Calderwood's line; thence  $\text{S } 15^{\circ} \text{ W } 203$  poles (crossing a plain at 30 poles, a road at 40, a branch at 58, a drain at 88, one at 124, one at 180, passing 3 beeches at 197, 4 poles to the E. corner made by A. L. Hunt in 1817 corresponding with Crain's patent) to a red oak stump, claimed by the defendants to be the stump of one of the trees of his beginning corner, the tree having been removed some years ago, by the appearance of the stump, no other marks of proper corner trees here - There is an old well marked line from the point of beginning in this line to here, the dates of which appear to be various, some count 12, 16, & 21 years. From here to <sup>the</sup> point first mentioned in this line, and thence  $\text{N } 15^{\circ} \text{ E } 200$  poles (crossing a drain at 17 poles, one at 88, a branch at 160 poles, to a place where the timber appears to have been much destroyed by hurricane and fire; some small sugar trees were found here much decayed; no corner found or line marks except on an ash at the corner marked on the upper bank; Crain's line made by Hunt was on the right from 6 to 10 poles distant. - thence  $\text{N } 75^{\circ} \text{ E } 408$  poles (passing a stone and stone at 10 poles claimed for Crain's corner) crossing Mad River at 308 poles, again at 311, and again at 316 poles; Sugar camp branch at 346, a small drain at 360 - passing 2 beeches and white ash at 404 poles - 4 poles to the right, no corner found, some decayed sugar timber was found here

It no line was found coming to this place claimed by the Dept. thence S 15° W 103 poles crossing a drain at 18, a branch at 45, a deep hollow at 90, a spring branch at 128, a deep drain at 180, a deep drain at 220, a branch at 354, passing a sugar tree and hickory at 397, poles to the right hand corner made by Hunt corresponding with Evans' corner here. No corner found claimed by the Dept.



Thence  $r 75^{\circ} W$  268 poles (cropping a branch at 82 poles, Macajac River at 175, a spring branch at 244, a mill race at 228, a road at 255 poles) to the beginning. (no line marks on this nor the last mentioned line) contain = ing 1027 ac 20

Robert Marrison }  
Benjamin Butler } *et al*

Note the lines shaded with red represent the recent survey and claims, the dotted lines represents the survey made by order of the court a direction of the parties. The depts. admitted that they are within the bounds of the p[er]ffs claims therefore they are not represented on the plat. I surveyed but one of the surveys on the diagram the others are laid down by the field notes of the original and recent surveys.

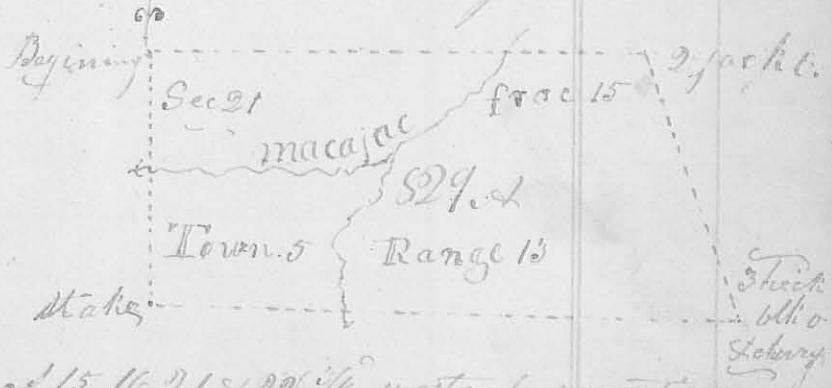
J. M. Marrison Surveyor  
of Logan County

(8189)

10 Mo. Oct. 3<sup>rd</sup> & 4<sup>th</sup> 1825

Surveyed 829 acres of land for Benjamin M. Piatt and others, heirs of John H. Piatt dec. Beginning at a stake corner to sections 21, 22, 27 & 28 in Township 10.5 Range 13 E. M. R. thence between sect. 21 & 27 south (cropping Macajac at 163 poles) 261 poles to a stake in said line. thence east  $\frac{1}{2}^{\circ}$  westerly variation allowed cropping the south channel of Macajac at 144 poles 556 poles to 3 small hickories black oak and cherry bush in Sudlers line - thence

with said line  $r 20^{\circ} W$  ( $\frac{1}{2}^{\circ}$  westerly variation from the original line) 276 poles to a small and large jack oak at the corner of sect



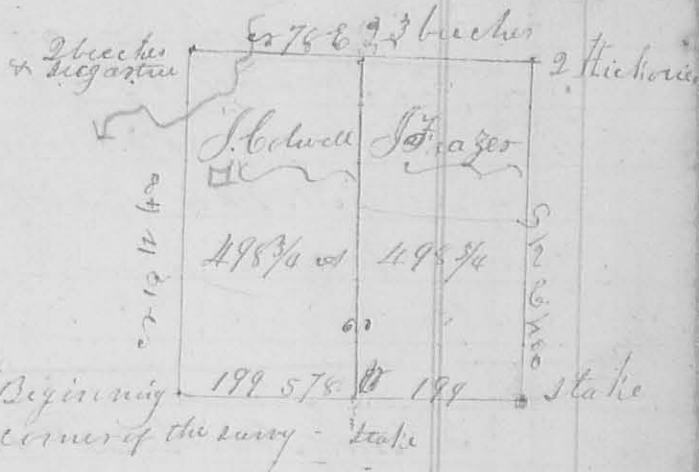
15 & 16 - thence between sect 15, 16 21, & 22  $\frac{1}{2}^{\circ}$  westerly variation from the original line, cropping Macajac at 92 poles & 62 poles to the beginning containing eight hundred and

12<sup>th</sup> Mo. Dec 17<sup>th</sup> 1825

Survey No 50

8194

I made a division of survey No 9949 north of the green river  
 treaty line, for James Caldwell and James Frazer, of Virginia.  
 Beginning at a stake in  
 the south line of the sur-  
 vey 199 poles from either  
 corner thence N 75° 11' 40"  
 poles to 2 beeches in the  
 north line of the survey  
 dividing it into 2 equal  
 parcels



James Bowyer }  
 William Bowyer } (Ck.)

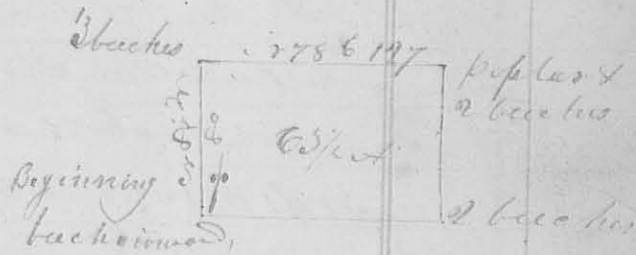
James McMillan Surveyor General

1<sup>mo</sup> (Jan) 3<sup>rd</sup> 1826

Survey No 51

8195

Surveyed 6 1/2 acres of land for Andrew Willson - Begin-  
 ning at a buck, ironwood, and sugar tree in the south  
 line of William Cochran's Survey No 3236. Thence N 87° 17' 50" poles  
 to 3 beeches, corner between said Willson and Burnside, thence  
 N 77° E 127 poles to a poplar and  
 2 beeches in the east line of  
 said survey, and on the bank  
 of a branch of Mill Creek  
 thence with said line S 10° E



80 poles to 2 beeches, an original corner of the survey  
 thence with the original line S 79° W 128 poles to the  
 beginning containing sixty three & half acres in the  
 S.E. corner of Cochran's said survey James McMillan S.S.C.

1<sup>mo</sup> (Jan) 14<sup>th</sup> 1826

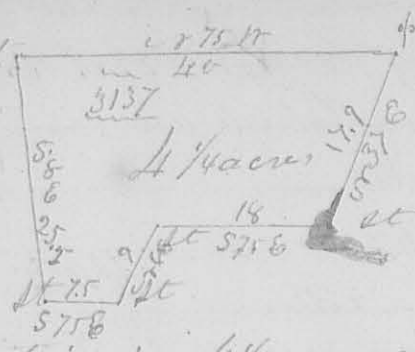
Survey No 52

8188

Surveyed 4 1/2 acres of land for Obenizar Jane. Beginning at  
 a large sugar tree, S.E. corner to John Bishop's land, thence  
 with the south line of his land N 75° 11' 45" poles  
 to a stake on the east side of the Sandusky road  
 thence S 8° W 25.5 poles to a stake on the same side of  
 said road thence S 75° E 75 poles to a stake, thence N 46°



with 6 poles to a stake, thence S 75° E 18 poles to a stake  
 on the west side of the road from  
 John Bishop's to  
 Jamesfield, thence  
 N 37° E 17.9 poles  
 to the beginning containing 4 1/4 acres & 24 poles part of  
 Survey No. 5157 on Mad River



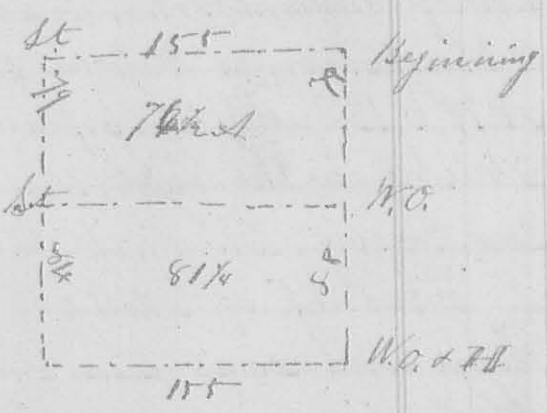
Saml. Gann }  
 Jonathan Pennel } C.C.

A. W. Mearns  
 S.L.C.

3<sup>rd</sup> mo. March, 22<sup>nd</sup> 1826. Survey No. 53

(8196)

Surveyed for James Brown, the N.E. q. of sec. 10. T. 4 R. 13 E. of the Miami. beginning at the corner of sec. 4, 5, 10 & 11 original bearing trees a "white oak 20 inches in diameter S 44° W 20 links dist. a black oak 24 in. in diam. S 63° E 17 links dist. (the white oak is cut down), thence between sec. 4 & 10, 168 poles to the original q. sec corner a "white oak 12 in. in diam. S 77° W 12 links a hickory 10 in. in diam. N 37° E 20 links dist. then returned, 54 poles on said line and marked a white oak 26 in. in diam. N 41° W 13 links dist thence west, allowing one degree easterly variation, 155 poles



and set a stake in a field; thence N 79° poles to the north line of said sec., thence with said line, allowing 1° easterly variation, 155 poles to the beginning thus ascertaining the contents of said q. sec. and dividing it into two unequal part of 76 1/2 & 8 1/2 of each

Lauris Herman }  
 Charles Brown } C.C.

A. W. Mearns S.L.C.

35  
 from James house above mentioned, where I found a line, that appeared to have been run and marked 3 or 4 years previously, which I followed N 15° W 200 poles where I found some marks on a beech tree but no trees marked as corner". - I also certify I laid down in my former return at the request of the defendants from a field connection which I then had in my possession, the original of which was made by Walter Owen, the claimer of the representatives of James Calder = wood surveys cr 3138 of 780 acres and cr 3139 of 1500 acres, but that I did not actually run any of said surveys except those of the 1000 acre cr 3137.

Note. - The foregoing diagram truly represents the Plff's claims, and I believe the persons named in this case are within the limits of the Plff.

Robert C. Harmon	} -66.	James McKernan
James Watkins		Surveyor of Logan County.

T Survey No. 35

(B188)

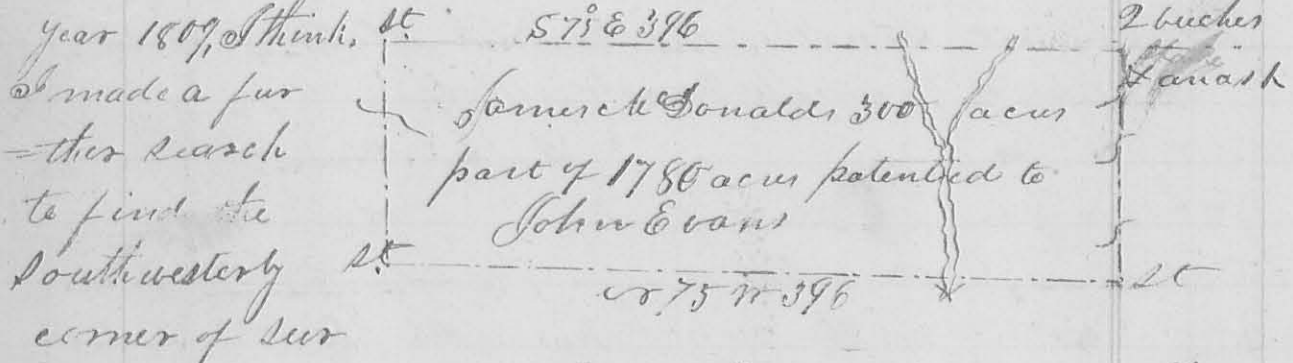
7<sup>th</sup> Circuit Court of the United States, District of Ohio,  
 The Estate of James McDonald Plff.  
 vs. } In Ejectment

Isaac Zane et al. Dfts.

In <sup>presence of</sup> ~~presence of~~ an order of survey to me directed from said Court, and the notice herewith returned, both parties being present, I proceeded on the 15<sup>th</sup> day of May 1826 to survey the land in controversy between the parties; Beginning by direction of Plff's attorney to survey his claim, by virtue of a deed of conveyance from John Evans, the patentee to James McDonald dated the 23<sup>rd</sup> day of April 1824; being part of a tract of land containing 1780 acres, granted unto the said John Evans, by patent, bearing date the 13<sup>th</sup> of November = ber 1821; beginning for the same at 2 beeches and white ash, north east corner to said Evans Survey cr 1042's, thence, reversing a line thereof, N 15° W 120 poles crossing a spring branch, 2 links water at 16 poles a branch

7 links water at 43 poles, and a branch 2 1/2 links water, high steep banks at 86 poles,) to a stake corner to a lot or tract of rimmed Owing's land, conveyed to him by John Evans thence with a line of said Owing's land N 75 W 396 poles (crossing Mad River and a road to a stake, north west corner to said Owing's land and in the line of the original survey, thence N 88 E 120 poles (crossing a spring branch 2 links water at 8 poles a branch 7 links water at 74 poles) to a stake north westerly corner to said Evans patent thence S 75 E 396 poles to the beginning containing 300 acres

I certify that the line mentioned by me in my former return in these words to wit "a to 2 bushes bearing some ancient land marks, said to be in Calderwood's line" which 2 bushes are in the same line mentioned by James Galloway jnr in his deposition here-with returned, in his answer to the 1st interrogatory put to him, which answers in these words to wit, In the



by N 31 1/2 W by running N 75 W 200 poles from James house above mentioned, where I found a line that appeared to have been run and marked three or four years previously, (which I followed S 15 W 200 poles, where I found some marks on a buck tree, but no trees marked as a corner. I also certify that I laid down in my former return, at the request of the defendants, from a field connection, which I then had in my possession, the original of which was made by Walter Durin, the claims of the representatives of James Calderwood N 31 1/2 E of 780 acres and N 31 1/2 W of 1500 acres, but I did not



not actually run any of the lines of said survey of Calderwoods except cr<sup>o</sup> 3137 of 1000 acres.

note. - I believe that the persons named in this cause are within the Pltff's bounds, and the foregoing plat represents his survey.

Robert M. Harmon  
James Matthews

May 15<sup>th</sup> 1826

Jas. M. Harmon  
C. C.

Surveye r<sup>o</sup> 56

7<sup>th</sup> Circuit Court of the United States, District of Ohio.

The Lessee of James McDonald Pltff. vs. Jesse Gaswood et. al. Defendants. Ejectment

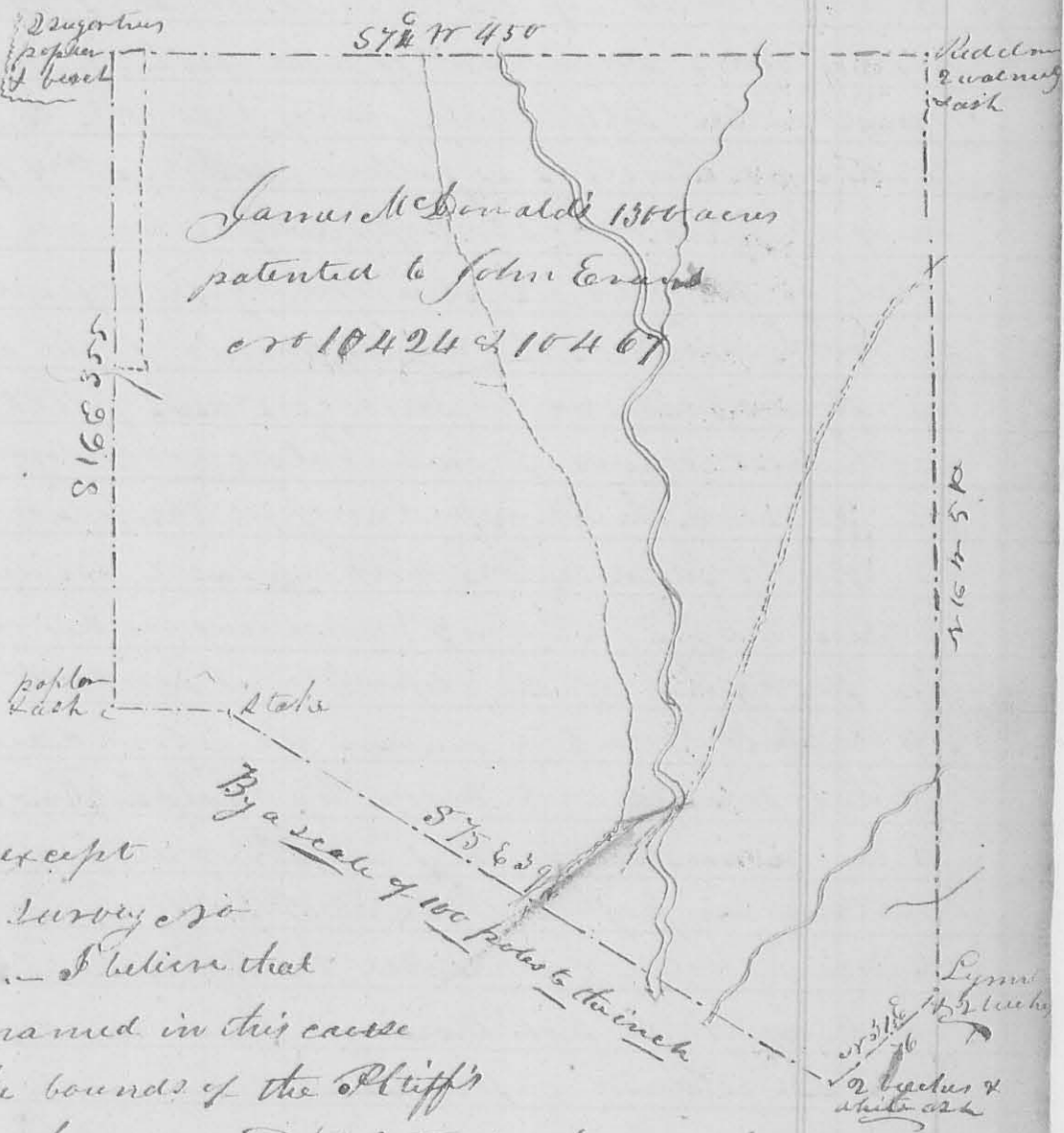
In pursuance of an order of survey to me directed from said court, and the notices herewith returned, both parties being present, I proceeded on the 15<sup>th</sup> day of May 1826 to survey the land in controversy between the parties, beginning by direction of Pltff's Attorney to survey his claims by virtue of a deed of conveyance from John Evans, the patentee, to James McDonald dated the 25<sup>th</sup> day of April 1824; it being a tract of land patented to the said John Evans, by James Monroe, president of the United States, by patent bearing date the 13<sup>th</sup> day of November 1821 containing 1300 acres cr<sup>o</sup> 10424 & 10467. Beginning at 2 beeches and white ash the north west corner of the said John Evans' survey cr<sup>o</sup> 10423 of 1780 acres. Thence with the lines of said Evans' survey and patent cr<sup>o</sup> 10424 - commencing with the second line thereof cr<sup>o</sup> 31 1/2 E 76 poles, (crossing a small drain at 82 poles) to a cypress and 2 beeches southeasterly corner to said Evans' patent, thence cr<sup>o</sup> 16 N 510 poles, (crossing the dry channel of a branch, a branch 12 links water at



116 poles, a drain at 290, a deep drain at 310, a road  
 384, and a small branch at 446 poles) to a red elm  
 white ash, a small white walnut, and a black  
 walnut, and a small blue ash, northeasterly cor-  
 = ner to Erwin's said patent; thence S 78° W 450 poles  
 (cropping a spring branch at 86, a state run for links  
 water at 99, Mad River at 263, a road at 315 a  
 small branch at 374, Spences' east line at 430  
 poles to 2 sugar trees, poplar and birch all small  
 and on the east side of a deep drain, or path  
 = or spring branch, westerly corner to said pat-  
 = ent, thence S 16° E 355 poles (cropping the south line  
 of Charles Spences' survey no 758, 20 poles west of  
 a lynn, ash, and red oak, S.E. corner, to said survey  
 a spring branch at 199 poles) to a poplar and ash  
 south westerly corner to Erwin's said patent; thence N 74°  
 (E 65 poles (cropping a small branch at 27 poles) to a  
 state, or N. W. corner to Erwin's survey no 104 2<sup>d</sup>. — This in-  
 = ber has been much destroyed here by stormy  
 thence S 75° E 396 poles, (cropping a road, Mad River  
 and a branch) to the beginning, (this line was not run  
 by me) — I certify that the line mentioned by  
 me in my former return in these words, to wit  
 "to 2 bushes bearing some ancient land marks,  
 said to be in Calderwood's line," which 2 bushes are  
 in the same line mentioned by James Galloway  
 jun in his deposition herewith returned, in his  
 answer to the 1<sup>st</sup> interrogatory put to him, which  
 answer is in these words, to wit: "In the year 1859,  
 I think, I made a further search to find the south  
 = westerly corner of Survey no 310<sup>7</sup>, by running  
 or 75° W 200 poles from Tanis house above mentioned  
 where I found a line that appeared to have been  
 run and marked there, or four years previ-  
 = ously, which I followed S 13° W 200 poles, where I  
 found some marks on a buck tree, but no tree  
 marked as a corner." &c — I also certify that

I laid down, at the request of the defendants from a field connection which I then had in my possession, the original of which was made by Walter Dunn.

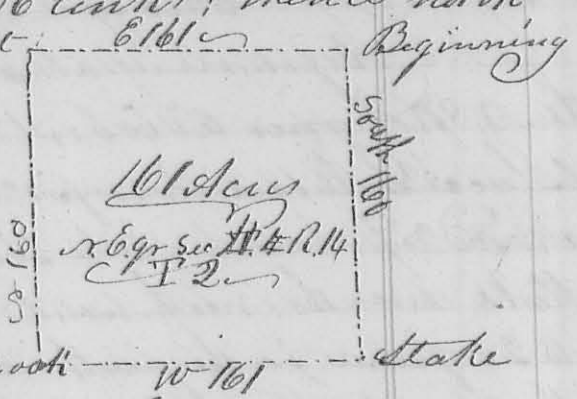
The survey claimed by the representatives of James Calderwood is 3138 of 780 acres & survey is 3139 of 1500 acres, but that I did not actually run any of the lines of these surveys except the 1000 acre survey is 3137 - Note - I believe that the persons named in this cause are within the bounds of the Plaintiff's claims, and the annexed plot truly represent them



Robert Harmon }  
James Watkins }  
June 15<sup>th</sup> 1826  
G. W. Harmon  
C. Surveyor

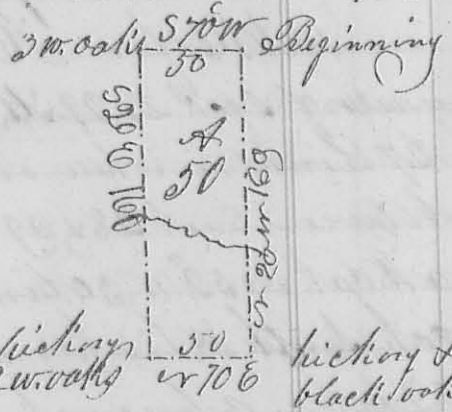
United States 7<sup>th</sup> Circuit Court, Ohio District,  
 The Lessee of James McDonald Plaintiff  
 vs.  
 Isaac James and others Defendants } Ejectment  
 The same Plaintiff vs.  
 Jesse Garwood and others Defendants } Ejectment  
 The Lessee of rimrod Owens Plaintiff  
 vs. Lanson Carter and others Defendants } Ejectment

134  
 line south 160 poles to a stake in a prairie, thence  
 west 161 poles a white oak east 56 links; thence north  
 160 poles to a stake in in the north line of the Sec  
 thence with said line east 161 poles to the  
 beginning containing 161 acres, the or 6 yr of said sec. white oak



John Moore }  
 Dennis Moore }  
 T. M. Marmont }  
 S. L. L.

8761  
 B. Long } 1<sup>st</sup> mo. Jan. 20<sup>th</sup> 1832 } Survey no 172  
 no 172 } Surveyed 50 acres for Benjamin Long  
 Beginning at a white oak the N.E. corner of  
 Thomas Worthington's survey no 4479; thence with the  
 north line of said survey S 70° W 50 poles to 3 small  
 white oaks; thence S 20° E crossing Mackachae at 78 poles  
 160 poles to a hickory and 2 white oaks, thence N 70° E  
 50 poles to a hickory and black oak in the east line of the  
 original survey; thence with said line N 20° W 160 poles  
 crossing the creek to the beginning, it being in the  
 N.E. corner of Worthington's said survey

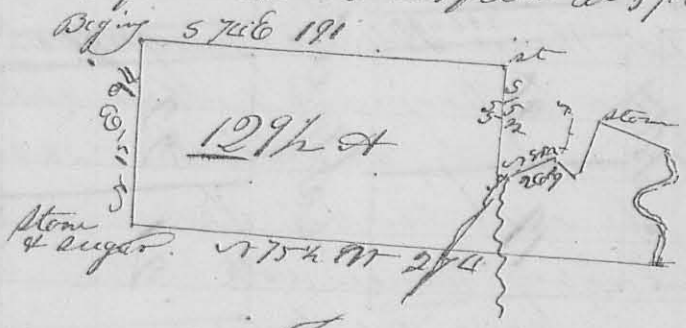


Jeffrey Williams }  
 Henry Short }  
 T. M. Marmont }  
 S. L. L.

8188  
 Alex Long } 3<sup>rd</sup> mo. March, 2<sup>nd</sup> 1832 } Survey no 173  
 no 173 } Surveyed 129 1/2 acres for Alex. Long  
 Beginning at a maple, large red oak and two  
 small ironwoods the south west corner of Ebenezer Zane's  
 land; thence with his south line S 74° E 191 poles to  
 a stake near L. Carter's house, thence with the west  
 -tern alley of Zanesfield S 74° W 50 poles to a stake  
 on the north side of water street in Zanesfield it being



at the south west corner of said town plat; thence  
 S 57° E 3 poles to a stake; thence up the Spring branch  
 N 82 1/2° E 26 poles to a stake in the branch, in the south  
 line of Horton Brown's land lot of land; thence with said  
 line S 24° E 19 1/2 poles to a stake, corner to said lot; thence  
 S 63° E 2 poles to a stake another corner to Brown; thence  
 with his east; line N 63° E 29 1/4 poles to a stake in the  
 road from Jamesfield east ward; thence with said road  
 S 57° E 38 poles to a stone in the road and east side of  
 Road River thence down the river with its meanders  
 to the line between Alex Long and Lanson Curtis  
 thence N 75 1/2° W, crossing the Spring branch at 66 poles, crossing  
 the road from Jamesfield southerly at 116 poles, 27 1/4 poles to  
 a stake and pegstone in the west line of James Col  
 denwood's survey N 31° 37'; thence with said line N 15° E  
 (crossing the road from Bellefontaine to Jamesfield at 8 poles and a small  
 branch several times) 94 poles to the  
 beginning it be-  
 ing a part of  
 Calderwood's said  
 survey



James Harmon 6546  
 CTD

Job Gardner } 66  
 Saml. Zam }