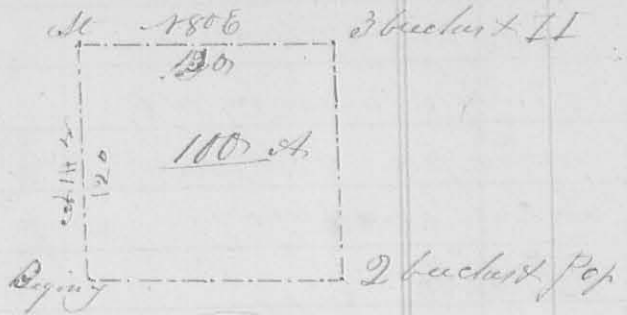


100

poles to Beeches and hickory in Reams south line
 thence 14 1/2 C 120 poles to 2
 beeches and poplar Stephen
 Leas's north line - thence
 150 1/2 W crossing a branch
 130 2 poles to the beginning
 containing 100 acres of John
 Scott's said survey
 John Moore }
 Stephen Leas }



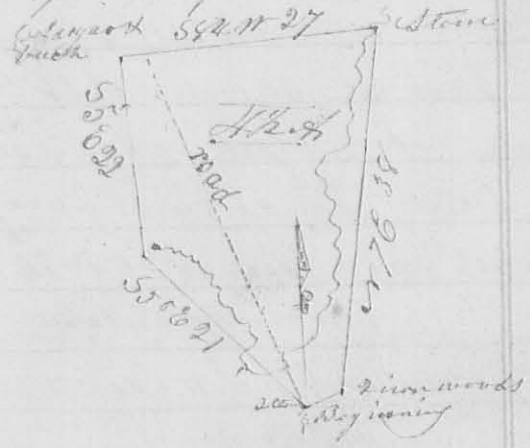
J. M. Harrison
 C. S. L. G.

8222

4th Mo. April, 21st 1829

Survey No 118

Surveyed 1/2 acres of land for the Society of Friends
 Beginning at a stone in the road from Goshen Meeting
 house to the head of Kings-creek, at a sugar tree and poplar
 corner between William Green and John Parson - thence
 26 1/2 C 4 poles to 2 small iron woods in Green's north line
 thence 27 1/2 C 38 poles to a stone in a small branch - thence
 18 1/2 W crossing said road at 24 poles, 27 poles to a beech and
 sugar tree - thence 156
 22 poles to a stone near
 the head of a spring
 thence 150 E crossing
 the spring branch, 21 poles
 to the beginning a part
 of Holland Harp's survey
 82223



John Keiatt }
 Jacob Popson }

J. M. Harrison
 C. S. L. G.

8233

6th Mo. July, 29th 1829

Survey No 119

Surveyed 6 1/2 acres of land for Redwood Easton
 Beginning at a sugar tree, cypress, elm, and walnut stump
 southeast corner of Alexander Dandridge's survey No 220
 thence with the east line of said survey north, cross-
 ing a branch at 74 poles, 78 poles, to 2 beeches, thence
 west, crossing a branch at 8 poles, one at 14, one at 136