

124
John
Mathewson
no 154

10th mo Oct. 7th 1830

Survey no 154

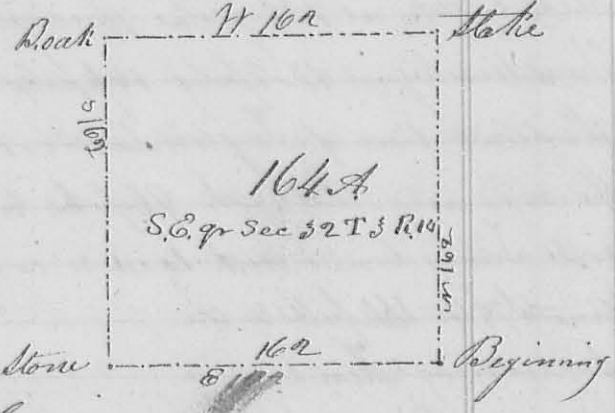
154

(E253)

Surveyed 164 acres for John Mathewson
Beginning at a stone, the corner of sect 31, 32, 25, & 26, T. 3, R. 14

M.R. set in a prairie 10 links north of a spring branch; thence north with the original line 162 poles to a stake in a prairie q^r sec corner between sect 26 & 32; thence west 162 poles to a stake, a bur oak 20 in diam. N 28 W 44 links dist. Thence south 162 poles to a stone, the q^r sec corner on the line between sect 31 & 32 thence east 162 poles to the beginning it being the S.E. q^r of the sec 32 T. 3 R. 14. M.R.

Robert Humphreys
Wm Moore
James Mathewson



Thos Butler
no 155

10th mo Oct. 2nd 1830

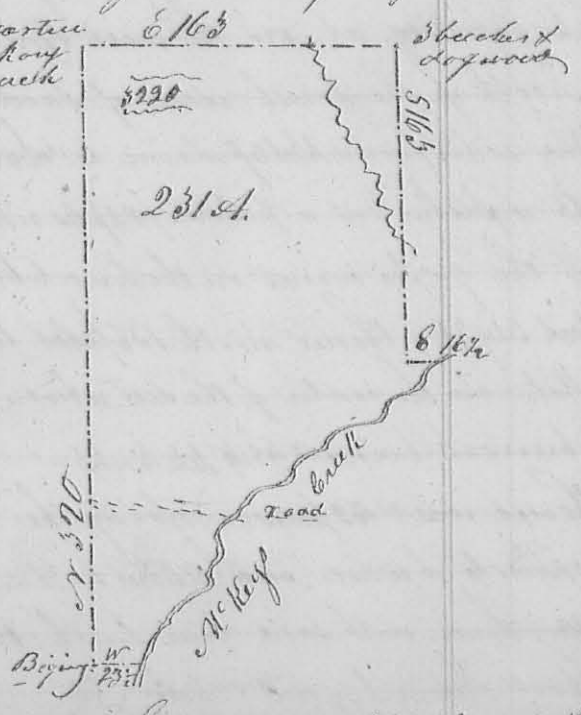
Survey no 155

155

Surveyed 231 acres for Thomas Butler

(E254) Beginning at a beech sugar and cherry tree, the cherry tree is down in the west line of Alex. S. Dandridge's survey no 3220 and south east corner to his survey no 4478, thence north with the west line of the former survey, crossing the road from Bellefontaine to Jarvisfield at 80 poles, 320 poles to a sugar tree to a sugar tree hickory and beech N.W. corner to survey no 3220, thence with the north line of the original survey East crossing a branch at 120 poles, 163 poles to three beeches

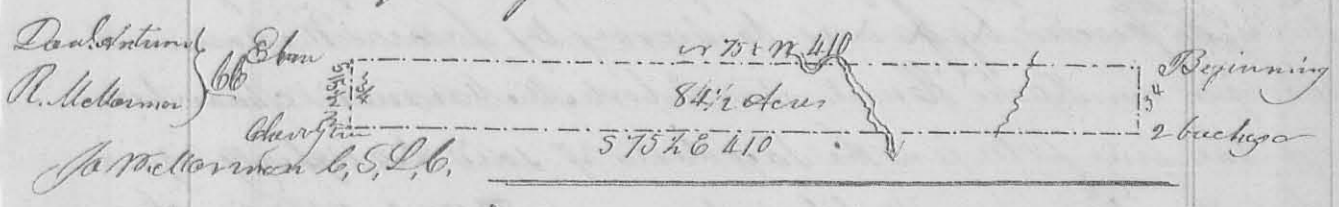
sugar tree hickory & beech
and dogwood N.W. corner to Joseph Dickinson's land thence with his west line south crossing a branch at 88 poles, 163 poles to a stake in a marsh N.W. corner to Dickinson; thence with his south line east 16 1/2 poles to the west side of the water in Mc Neys a blue ash and white walnut creek; thence down the creek with its meanders crossing said road to 2 sugar trees on the west bank of the creek 23 1/2 poles east of the beginning; thence west 23 1/2 poles to the



beginning containing 231 acres in the north west corner of David
ridges survey r 3225

Jan 11th Mo. Nov. 13th 1830 Survey No 156
No 156 Surveyed 84 1/2 acres for Isaac Jane (8/38)

Beginning at a sugar tree and beeches at the north
east corner of James Calderwoods survey r 3137 and south
easterly corner to his survey r 3139; thence with the line between
said survey r 75 1/2 W crossing Sugar camp branch at 58 poles
Mad river at 156 again at 163, and again at 176 poles, the road
from Jamesfield to Sandusky at 242 poles, 410 poles to an elm
small ash and white oak N.W. corner to Calderwoods Survey r 3137
thence W 15 1/2 N with the original line 34 poles to a small cherry tree
white oak and dog wood N.W. corner of Isaac Jane's land conveyed
to him by Lucas Sullivan; thence with his north line S 7 1/2 E
410 poles crossing the above named road Mad river and Sugar
camp branch, to 2 beeches, and dog wood in the east line of
the original survey, and N.E. corner to S. Jane; thence with said
line N 15 1/2 E 34 poles to the beginning, containing 84 1/2 acres off
the north end of survey r 3137



Isaac Jane 11th Mo. Nov. 13th 1830 Survey No 157
No 157 Surveyed 35 1/4 acres for Isaac Jane (8/38)

Beginning at a sugar tree and beeches at the N.E. corner of
James Calderwoods survey r 3137; thence with the north line of
said survey r 75 1/2 W 244 poles, crossing Sugar camp branch at 58;
Mad river at 156, at 163 and at 176 poles, to the centre of the road
from Jamesfield to Sandusky; thence with said road S 7 1/2 W
177 poles to a stake in a line ran by A.L. Hunt; thence with said
line S 7 1/2 E crossing the river and Sugar camp branch, 239.5 poles
to a beech and dog wood in the east line of the original survey; thence
with said line N 15 1/2 E 207 poles to the beginning containing 35 1/4
acres

