

REC'D 1-12-98 SMLY OK ✓



Lee Surveying and Mapping Co., Inc.



Farm Surveys • Lot Surveys • Topography • Subdivisions • Construction Layout

117 NORTH MADRIVER STREET
BELLEFONTAINE, OHIO 43311

(937) 593-7335
FAX (937) 593-7444

EVILSIZOR (126.951 ACRES)

Lying in Virginia Military Survey 3322, Jefferson, Lake and Rushcreek Townships, Logan County, Ohio.

Being that tract of land in the name of Kathryn Evilsizor as deeded and described in Official Record 41, Page 60 of the Logan County Records of Deeds and being more particularly described as follows:

Beginning at a 1 inch iron rod found at the intersection of center-lines of Township Road 219 and County Highway 9.

THENCE, with the south line of Township Road 219 and the south line of Virginia Military Survey 3322, S 84°-52'-55" W, a distance of 679.36 feet to a railroad spike found at the southeast corner of the Raymond F. Kerns 0.935 acre tract (O.R. 130, Pg. 212).

THENCE, with the lines of the said 0.935 acre tract the following three courses:

N 7°-48'-05" W, a distance of 300.00 feet to a 5/8 inch iron rod set.

S 84°-52'-55" W, a distance of 136.00 feet to a 5/8 inch iron rod set.

S 7°-48'-05" E, a distance of 300.00 feet to a railroad spike found on the center-line of Township Road 219.

THENCE, with the center-line of Township Road 219 and the south line of Virginia Military Survey 3322, S 84°-52'-55" W, a distance of 913.58 feet to a railroad spike set.

THENCE, with the east lines of the Bernice Stover 35.73 acre tract (Vol. 203, Pg. 542) and the Logan Land Corporation 147.61 acre tract (O.R. 45, Pg. 539), N 4°-40'-40" W, a distance of 3022.32 feet to a 5/8 inch iron rod found.

THENCE, with a south line of the said 147.61 acre tract, N 85°-10'-09" E, a distance of 1842.78 feet to a 5/8 inch iron rod set (The original stone was found but had been destroyed by construction).

THENCE, with the west lines of the John F. Harmon 37.27 acre tract (Vol. 329, Pg. 833) and the Keith A. Peterson 8.989 acre tract (O.R. 94, Pg. 219), S 4°-55'-03" E, a distance of 2867.75 feet to a railroad spike set on the center-line of County Highway 9.

THENCE, with the center-line of County Highway 9, S 36°-02'-48" W, a distance of 192.96 feet to the point of beginning.

Containing 126.951 acres of which 31.198 acres are in Jefferson Township (0.812 acre is in highway rights-of-way), 56.559 acres are in Lake Township (0.239 acre is in highway right-of-way), and 39.194 acres are in Rushcreek Township.

The basis for bearings is based upon the center-line of Township Road 57 east from the line between V.M.S. 3322 and V.M.S. 3321 being N 84°-43'-00" E, and all other bearings are from angles and distances measured in a field survey completed June 15, 1992, by Lee Surveying and Mapping Company .

Description prepared by:
Jeffrey I. Lee
Professional Surveyor 6359
June 15, 1992
Revised January 12, 1998

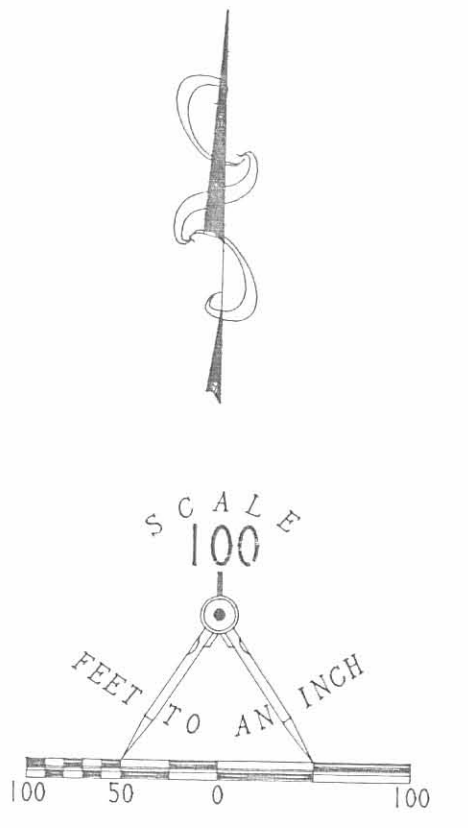


ORIGINAL STAMP IN GREEN

INDEXED ON MAP
0375 IP

LOGAN LAND CORPORATION
147.61 AC.
O.R. 45, PG. 539

N 85° 10' 09" E
1842.78'



- LEGEND
- ⊕ STONE FOUND DISTURBED
 - ◊ 1/2" I. ROD FOUND
 - 5/8" I. ROD FOUND
 - 1" I. ROD FOUND
 - ⊗ RAILROAD SPIKE FOUND
 - ⊙ RAILROAD SPIKE SET
 - 5/8" I. ROD SET

REFERENCE:
LOGAN COUNTY ENGINEER'S RECORDS:
DRAWING X-9C 11/18
BOOK C, PAGE 59
FIELD BOOK 552, PAGES 26-27

JOHN F. HARMON
37.27 AC.
VOL. 329, PG. 833

KEITH A. PETERSON
8.989 AC.
O.R. 94, PG. 219

126.951 ACRES TOTAL

LAKE TOWNSHIP (56.559 ACRES)

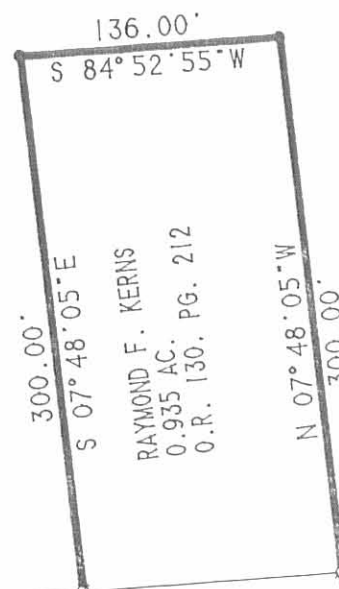
RUSHCREEK TOWNSHIP (39.194 ACRES)

JEFFERSON TOWNSHIP (31.198 ACRES)

NOTE:
ACREAGE IN LAKE TOWNSHIP IS BASED
UPON THE LOGAN COUNTY ENGINEER'S
RECORD BOOK C, PAGE 59 FOR THE
INTERSECTION WITH TOWNSHIP ROAD 219
AND THE 1949 FOSTER WRIGHT SURVEY
FOR ALLES FOR THE TOWNSHIP LINE LOCATION
AT COUNTY HIGHWAY 57.

NOTE:
THE LOCATION OF THE LINE BETWEEN RUSHCREEK TOWNSHIP
AND JEFFERSON TOWNSHIP IS BASED UPON STATIONING ON
THE CENTER-LINE OF COUNTY HIGHWAY 9 AND A SCALED
LOCATION FROM THE COUNTY TAX MAP PHOTOS FOR THE POINT
ON THE LAKE TOWNSHIP LINE.

BERNICE STOVER
35.73 AC.
VOL. 203, PG. 542



(0.239 ACRE IN THE HIGHWAY RIGHT-OF-WAY)

913.58'
S 84° 52' 55" W

V.M.S. 3322

(0.812 ACRE IN THE HIGHWAY RIGHT-OF-WAY)

V.M.S. 3442

TOWNSHIP ROAD 219

COUNTY HIGHWAY 9

SURVEY OF THE KATHRYN EVILSIZOR LAND
126.951 ACRES BY THIS SURVEY
OFFICIAL RECORD 41, PAGE 60
VIRGINIA MILITARY SURVEY 3322
JEFFERSON, LAKE AND RUSHCREEK TOWNSHIPS
LOGAN COUNTY, OHIO

SURVEYED BY:
JEFFREY I. LEE
PROFESSIONAL SURVEYOR 6359
JUNE 15, 1992
LEE SURVEYING & MAPPING CO.
143 East Columbus Avenue
BELLEFONTAINE, OHIO 43311
(613) 593-7335

INDEXED ON MAP
8375 IP

D 76 LLWRR219 L 1536-1

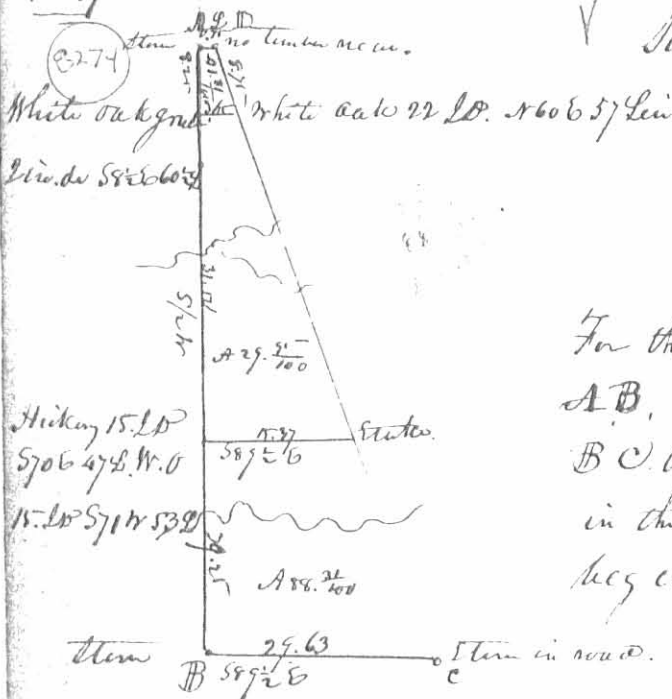
238

March 1826

the interior corner (a letter D) at 606 5/8 links ending in the corner at
 750, to the original Quarter Section Corner on the South line of the Section -
 at letter H. For the contents of each lot, see the map, with the common
 name marked thereon.

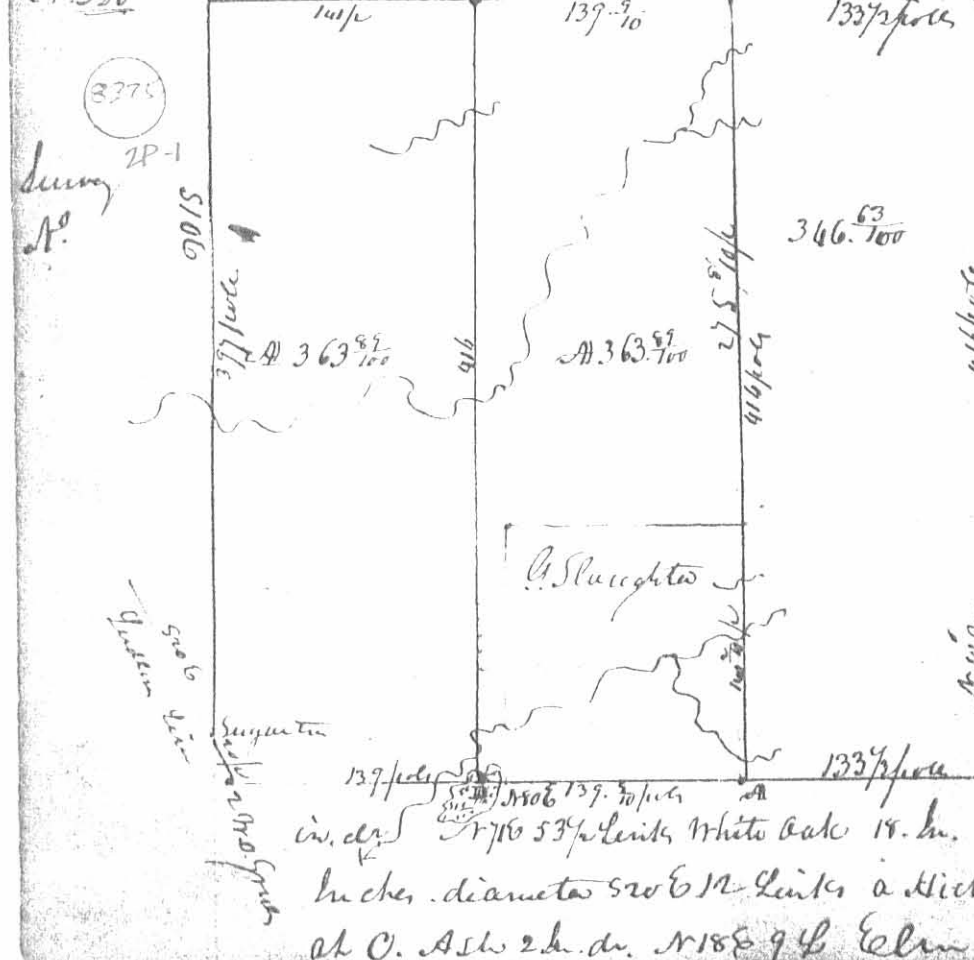
Andrew Gray
 & Wm. M. Straine } Ch. men Land Hopkins County Surveyor S. C.

A^o 319



Surveyed March 1826.
 Note - this plat represents
 the survey of Tract S. 208 S. 4. R. 14 W. 2 S.
 Surveyed and sub. divided for R. Pot-
 terson Agent for J. Gordon - W. B.
 For the contents of each lot see the plat. The line
 A B, represent the Western boundary of the sect -
 B C the Southern. C D the Eastern a Quaker line
 in the center of the Millford road At A, the
 beginning of the survey, a line the origin
 lies down. all down as the corner of the Sect.
 D. Hopkins Co. Surveyor S. C.

A^o 320



This plat represents a survey
 made for John Slaughter
 border of the Prussian treaty
 line which borders it with
 North, and D. Lancy's
 survey of 3322 bounded
 on the East, for the corner
 & distance of the line in the
 plat - and also for contents -
 Description of corner
 At A, the beginning of L.
 Slaughter part of the survey 580 W
 1337 2/3 poles from the S. E. corner
 the origin of survey, a Sugar 12
 in. dia. x 716 5/8 Links White oak 14 L.D. x 1106 5/8 Links at B Ash 10
 inches diameter 526 1/2 Links a Hickory 3 L.D. x 326 16 1/2 Links
 at C. Ash 2 L.D. x 188 9/8 Elm 5 in. dia. 559 6/8 55 L.

at D. Stand in a prairie. At E. Original Corner, the lot marked 239
 "G. Staigeter" represents 100 acres, not surveyed, when the subdivision
 was made, but formerly occupied by said G. Staigeter, and is
 only marked on the plat to show its situation. The Eastern third
 contains 346 ⁶²/₁₀₀ acres, laid off agreeably to the original survey
 132 ¹/₂ poles wide, extending the length of the survey.

Survey of 5. 1826.

L. Hopkins Surveyor &c.

Leviniah Laughlin
 William Robt. Ch. Com.

N^o 321 Survey of April 20th 1826 for John Whelan, Adm^r of Philomena Rogers
 dec^d. part of Survey N^o 9975. Beginning at 2 beeches, N. W. corner
 of said Rogers tract of land, thence S 12 ¹/₂ E 104 poles, crossing a large
 branch at 86 poles to 3 sugar, one of them now cut down, thence N 78 E
 100 poles, crossing a mill race at 38 poles, creek at 52 poles, and
 mill race at 87 poles to 2 beeches, now cut down, thence N 12 ¹/₂ W
 104 poles, crossing creek at 32 poles to sugar, Hickory, 2 beeches, thence
 S 78 W 100 poles to the beginning containing 65 acres, laid off at
 same time, on this side of the foregoing lot to the Widow of said decedent
 for dower as follows - Beginning at the N E corner of said Rogers
 land, described above, at a Hickory, 2 beeches, sugar, thence S 78 W
 33 ³/₁₀ poles to an Ironstone and White Oak, thence S 10 ¹/₂ E 104 poles
 to a stake in the south line of said lot, thence with said line
 N 78 E 22 ¹/₂ poles, crossing a mill race to Elm & beeches, the beeches
 now cut down - thence N 12 W 104 poles, crossing creek at 52 poles to
 the beginning, containing 21 ⁶/₁₀₀ acres.

L. B. Anderson
 Hiram McKim } Ch. men

L. Hopkins Surveyor &c.

N^o 322 Survey for George Houtz & Mrs. Craig, April 1826 the NW
 1/4 of S 21. T 2 R 14 W R 1, as follows. Beginning at the quarter
 Section Corner between S 21 & 22, at a tree in a road, one of the
 original bearing trees yet standing, thence S 7 ¹/₂ W 40 ch. 60 ¹/₂ crossing
 a branch at 84 poles to a stone, comes to Hudson, a White 22 in. do S 68 W
 25 Links, and White Oak 10 L.P. N 81 E 59 Links - thence N 89 ¹/₂ W 40 ch
 50 Links to a Hickory, 8 in. do N 53 E 22 links, Elm 8 in. do S 25 E 36 ¹/₂
 thence N 2 E 30 chain to a stake in a prairie, thence N 88 ³/₄ E 36 ¹/₂
 N 2 chain to the beginning containing 1161 ³⁴/₁₀₀ acres. Also