

Record 6-10-93
00924

0.029 Acre Permanent Easement

A permanent easement granted to the Logan County Commissioners from Fred J. Eads, Jr., etux, for access to the radio tower site.

Jefferson Township
Logan County, Ohio
V.M.S. 3683
June 1993

The following described parcel is found in Jefferson Township, Logan County, Ohio, and is part of Fred J. Eads, Jr., etux's 45.07 acre tract (D.B. Vol. 308, pg. 114). Said parcel is part of Virginia Military Survey 3683, and is more particularly described as follows:

Beginning at a wood corner post, found at the S.W. corner of Anna M. Allen, etal's 62.11 acre tract (O.R. 59, pg. 468). Said post also being the N.W. corner of Fred J. Eads, Jr., etux's 45.07 acre tract.

Thence, with the apparent property line between Allen and Eads, N 83°-40'-17" E, 50.00 feet to a point.

Thence, S 7°-14'-07" E, 25.00 feet, to a point.

Thence, S 83°-40'-17" W, 50.00 feet, to a point on the E. line of the United Telephone Company's 8.91 acre tract (D.B. Vol. 283, pg. 161).

Thence, with the United Telephone Company's E. line, N 7°-14'-07" W, 25.00 feet to the point of beginning.

The above described permanent easement contains 0.029 acres, more or less.

Subject to a 25 feet easement granted to the Dayton Power and Light Company (D.B. Vol. 318, pg. 394).

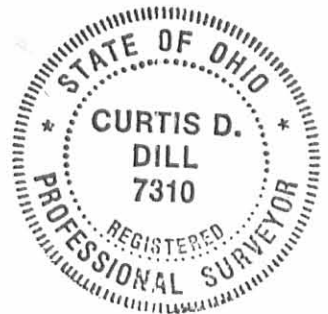
This description was prepared from an actual field survey, performed by the Logan County Engineer's Office. All angles and distances were measured in the field.

Fieldwork was completed on June 1, 1993.

Basis of bearing being the East line of the Ohio Hi-Point Vocational School's 52.54 acre tract (S 7°-30'-00" E) as recorded in D.B. Vol. 341, pg. 734.

Curtis D. Dill

Curtis D. Dill, P.S.
Deputy Surveyor
Logan County Engineer's Office
Registered Survey No. 7310
Bellefontaine, Ohio 43311

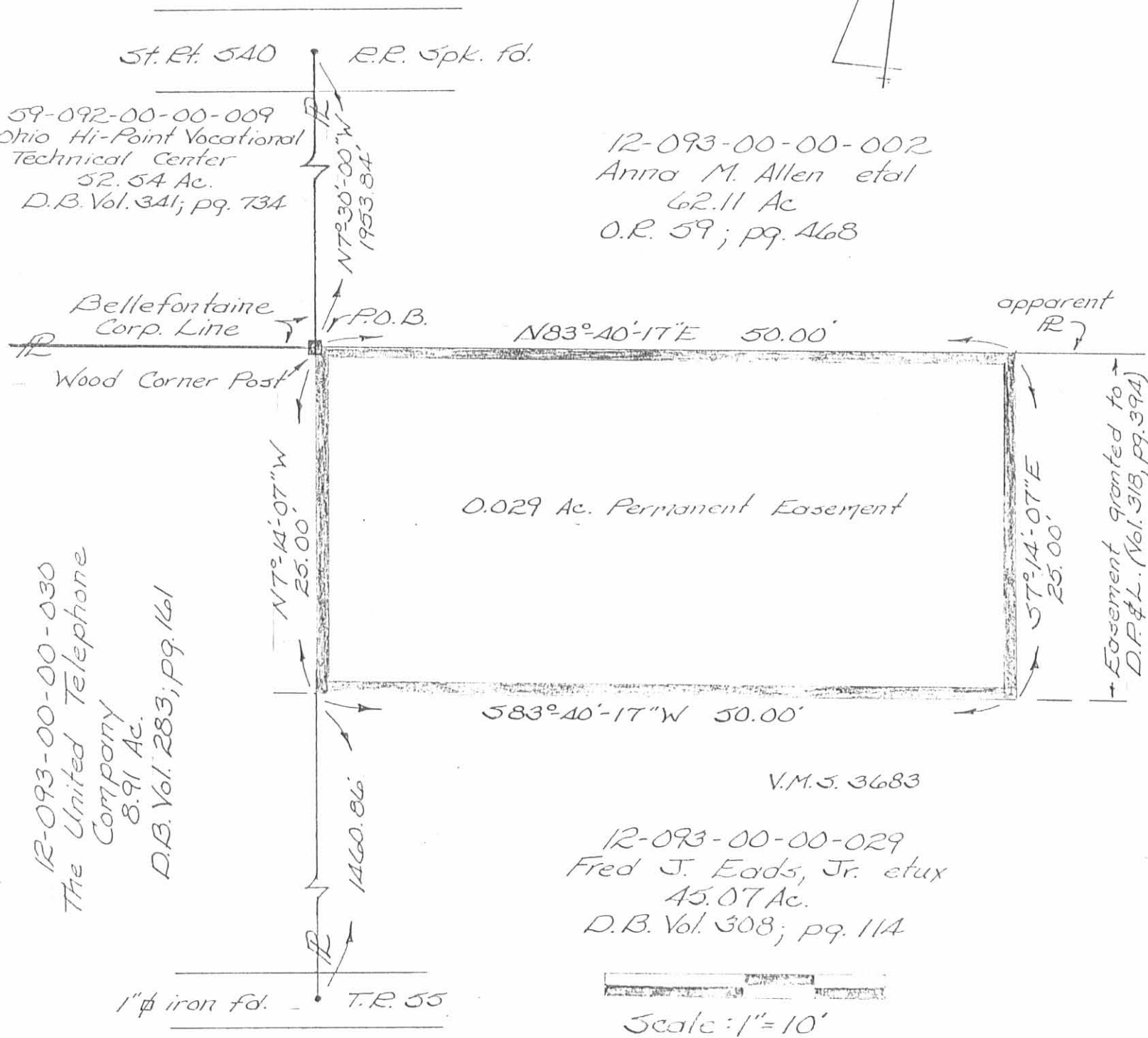


INDEXED ON MAP
8806 1D

0.029 Ac. Permanent Easement

A Permanent Easement granted to the Logan County Commissioners from Fred J. Eads et ux for access to the radio tower site.

Jefferson Township
Logan County, Ohio
V.M.S. 3683
June 1993

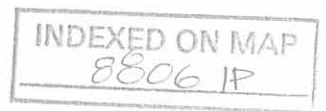


This plat was prepared from an actual field survey performed by the Logan County Engineers Office. All angles and distances were measured in the field.

Fieldwork completed in June 1993

Curtis D. Dill

Curtis D. Dill P.S.
Logan County Engineers Office
Registered Survey No. 7310
Bellefontaine, Ohio



Basis of bearing being the East line of the Ohio High Point Vocational School's 52.54 Ac. tract (57°30'00"E) as recorded in D.B. Vol. 341; pg. 734.

Revised 6-7-93
DE JCH

9.182 Acre Permanent Easement granted to the Logan County
Commissioners from Anna M. Allen etal for radio tower site.

**Jefferson Township
Logan County, Ohio
V.M.S. 3683
June, 1993**

The following described parcel is found in Jefferson Township, Logan County, Ohio, and is part of Anna M. Allen etal's 62.11 acre tract (O.R. 59, pg. 468). Said parcel is part of V.M.S. 3683 and is more particularly described as follows:

Beginning at a wood corner post, found at the S.W. corner of Anna M. Allen etal's 62.11 acre tract. Said post also being the N.W. corner of Fred J. Eads Jr. etux's 45.07 acre tract (D.B. Vol. 308, pg. 114).

Thence, with the West line of Anna M. Allen etal's 62.11 acre tract, and the East line of The Ohio Hi-Point Vocational Technical Center's 52.54 acre tract (D.B. Vol. 341, pg. 734), N. 7°-30'-00" W., 645.13 feet to a point.

Thence, N. 83°-40'-17" E., 620.13 feet to a point.

Thence, S. 7°-30'-00" E., 645.13 feet to a point on the apparent property line between Anna M. Allen etal's 62.11 acre tract and Fred J. Eads Jr. etux's 45.07 acre tract.

Thence, with the apparent property line between Anna M. Allen etal's 62.11 acre tract and Fred J. Eads Jr. etux's 45.07 acre tract, S. 83°-40'-17" W., 620.13 feet to the point of beginning.

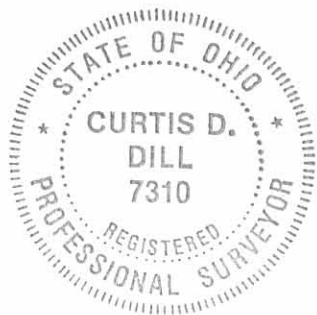
The above described permanent easement contains 9.182 acres more or less.

Subject to a 25 foot easement granted to the Dayton Power and Light Company (D.B. Vol. 318, pg. 300).

This description was prepared from an actual field survey, performed by the Logan County Engineer's Office. All angles and distances were measured in the field.

Field work completed on June 1, 1993.

Basis of bearing being the East line of the Ohio Hi-Point Vocational School's 52.54 acre tract (S. 7°-30'-00" E.) as recorded in D.B. Vol. 341, pg. 734.

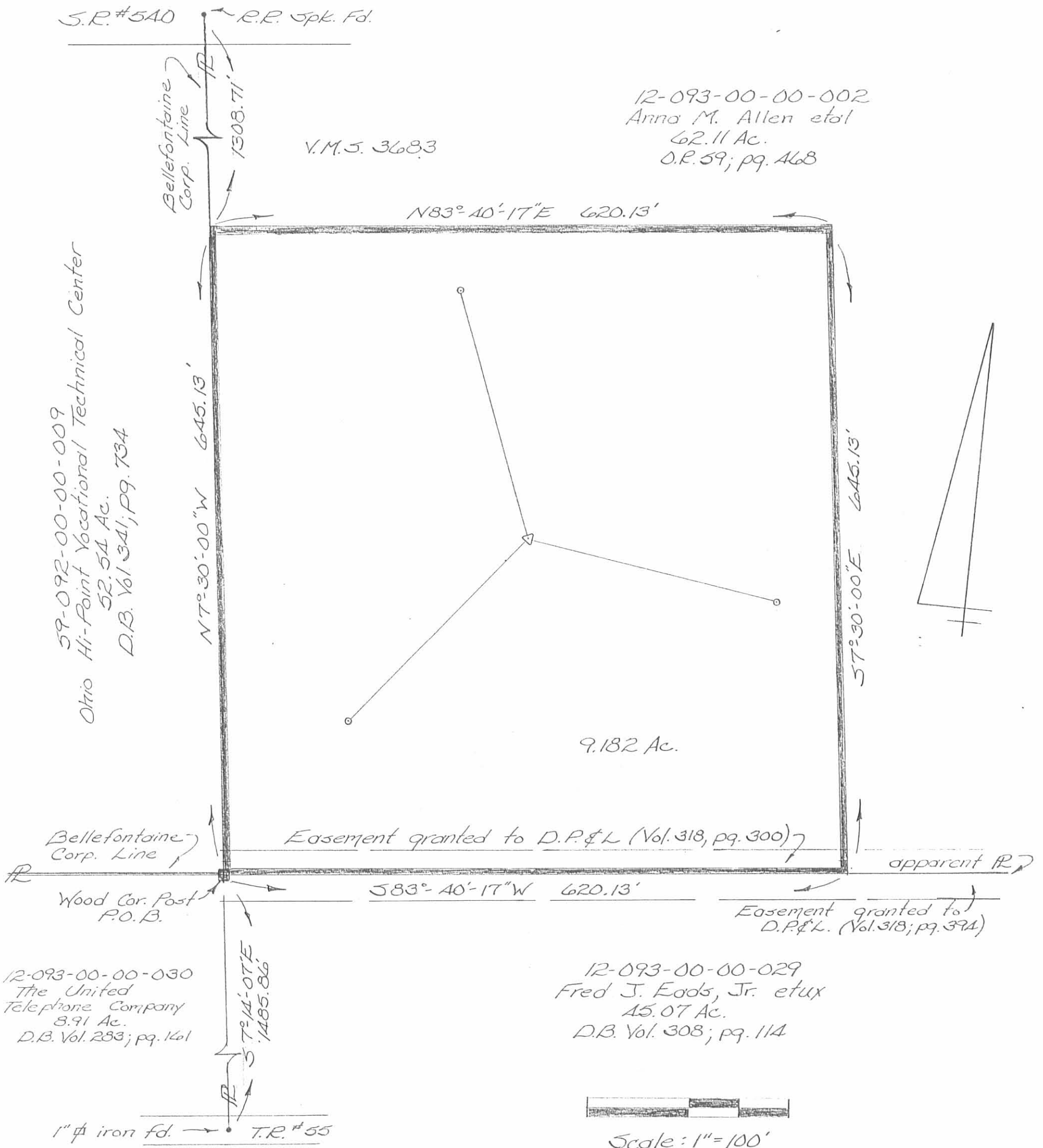


Curtis D. Dill
Curtis D. Dill, P.S.
Logan County Engineer's Office
Registered Survey No. 7310
Bellefontaine, Ohio

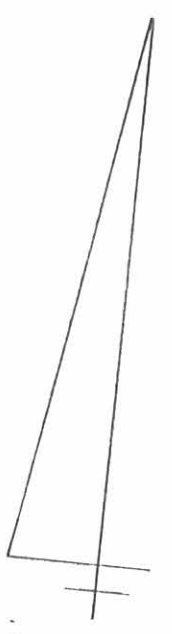
INDEXED ON MAP
8806 2D

9.182 acre Permanent Easement granted to the Logan County Commissioners from Anna M. Allen et al for radio tower site.

Jefferson Township
Logan County, Ohio
V.M.S. 3683
June 1993



59-092-00-00-009
Ohio Hi-Point Vocational Technical Center
52.54 Ac.
D.B. Vol. 341; pg. 734



This plat was prepared from an actual field survey performed by the Logan County Engineers Office. All angles and distances were measured in the field. Fieldwork completed in June 1993.

Curtis D. Dill
Curtis D. Dill P.S.
Logan County Engineers Office
Registered Survey No. 7310
Bellefontaine, Ohio



INDEXED ON MAP
8806 2P

Basis of bearing being the East line of Ohio High Point Vocational Schools 52.54 Ac. tract (57°30'00"E) as recorded in D.B. Vol. 341; pg. 734.

Permanent Easement

United Telephone Company to Logan County Commissioners

Jefferson Township
Logan County, Ohio
V.M.S. 3683
April 1993

The following described permanent easement is a 40 foot strip of ground, situated in Jefferson Township, Logan County, Ohio, and is part of Virginia Military Survey No. 3683. The above said strip being a part of the United Telephone Company's 8.91 acre tract (D.B. Vol. 283; pg. 161), and is more particularly described as follows:

Beginning at a 1 inch square iron found on the centerline of Jefferson Township Road No. 55 at the SW corner of a 45.07 acre tract presently in the name of Fred J. Eads, Jr., etux (D.B. Vol. 308; pg. 114).

Thence, with the center of T.R. #55, S.84°-50'-00" W., 40.00 feet to a point.

Thence, with the East line of Harold Marker's 78.19 acre tract (D.B. Vol. 344; pg. 861), passing through United Telephone Company's 8.91 acre tract, N.5°-15'-00" W., 1485.94 feet to a point in the South line of Ohio High Point Vocational Technical School's 52.54 acre tract (D.B. Vol. 341; pg. 734).

Thence, N.84°-56'-37" E., 40.00 feet to a wooden corner post found at the SE corner of the Vocational School's 52.54 acre tract. Said post also being the NW corner of Fred J. Eads, Jr.'s 45.07 acre tract (D.B. Vol. 308; pg. 114).

Thence, with the West line of Eads' 45.07 acre tract, S.5°-15'-00" E., 1485.86 feet to the place of beginning.

The above described easement contains 1.364 acres, more or less, 0.018 acres of which falls within the right-of-way of Jefferson Township Road No. 55.

Subject to a 25 foot easement (D.B. Vol. 318; pg. 672) and a 5 foot easement (D.B. Vol. 354; pg. 323) granted to the Dayton Power and Light Company.

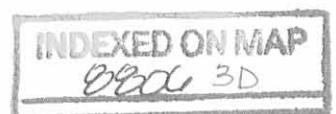
This description was prepared from an actual field survey performed by the Logan County Engineer's Office. All angles and distances were measured in the field.

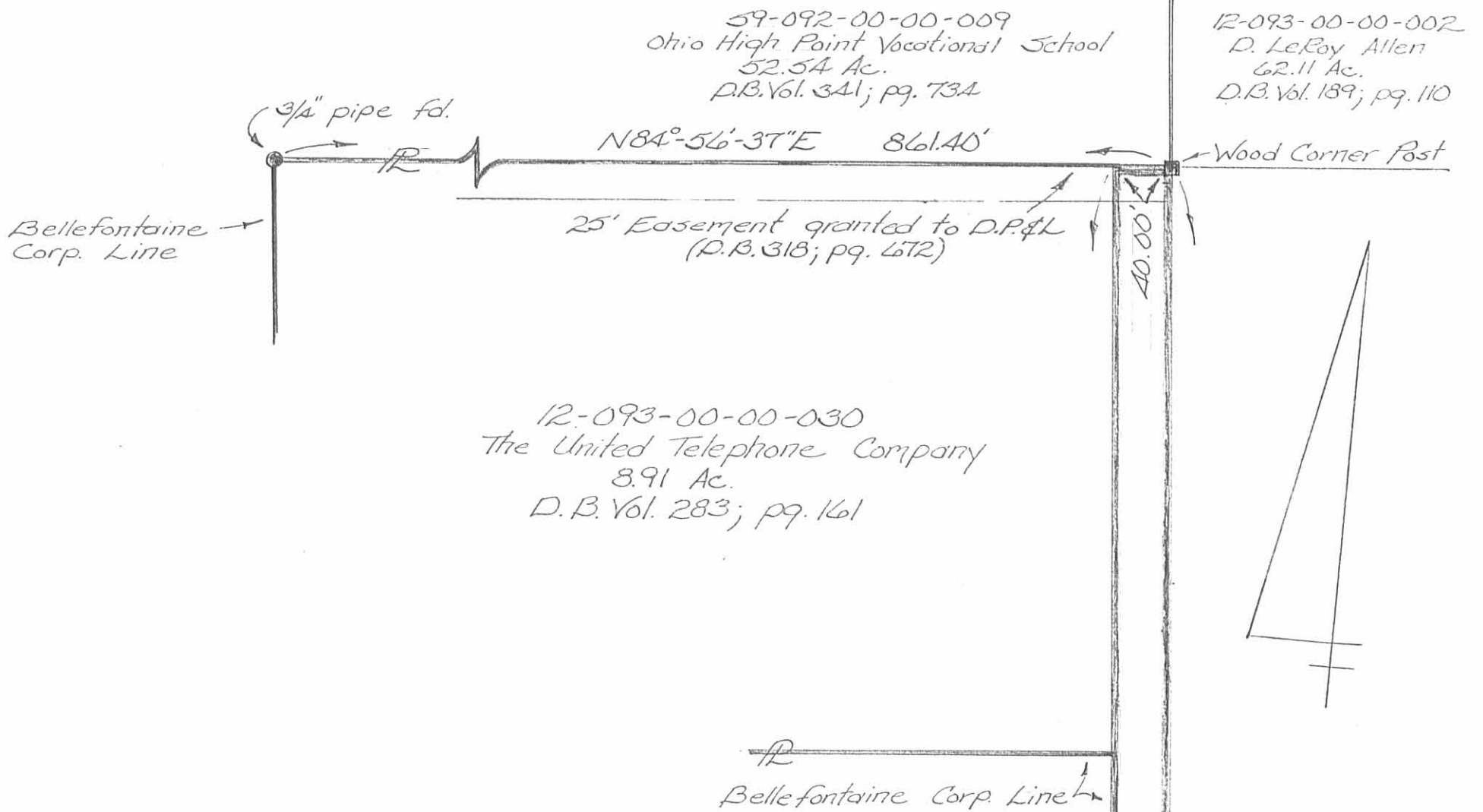
Field work was completed in April 1993.

Basis of bearing being the centerline of Jefferson Township Road No. 55 (S.84°-50'-00" W.) as shown on the 1971 plat of the United Telephone Company's Survey (Index No. 4869).



Curtis D. Dill
Curtis D. Dill, Deputy Surveyor
Logan County Engineer's Office
Registered Survey No. 7310
Bellefontaine, Ohio 43311





59-092-00-00-009
Ohio High Point Vocational School
52.54 Ac.
D.B. Vol. 341; pg. 73A

12-093-00-00-002
D. LeRoy Allen
62.11 Ac.
D.B. Vol. 189; pg. 110

12-093-00-00-030
The United Telephone Company
8.91 Ac.
D.B. Vol. 283; pg. 161

12-093-00-00-029
Fred J. Eads, Jr. et ux
45.07 Ac.
D.B. Vol. 308; pg. 114

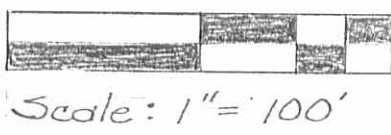
59-092-00-00-014
Harold Marker
78.19 Ac.
D.B. Vol. 344; pg. 861

5' Easement granted to D.P.&L
D.B. 354, pg. 323

Permanent Easement

United Telephone Company
to
Logan County Commissioners

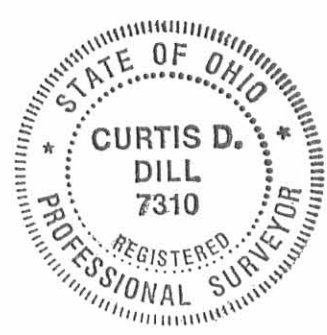
Jefferson Township
Logan County, Ohio
V.M.S. 3683
April 1993



This plat was prepared from an actual field survey by the Logan County Engineers Office. All angles and distances were measured in the field.

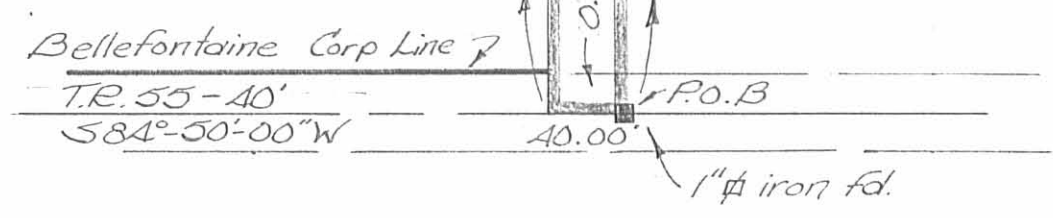
Fieldwork completed in April 1993

Curtis D. Dill
Curtis D. Dill P.S.
Logan County Engineers Office
Registered Survey No. 7310
Bellefontaine, Ohio



Basis of bearing being the centerline of Jefferson Township Road No. 55 (S84°50'00"W) as shown on the 1971 plat of the United Telephone Company's Survey (Index No. 4869).

INDEXED ON MAP
8006 3P



REC'D 4-27-09 SMJ/OK

Lee Surveying and Mapping Co., Inc.

Land Surveys • Topography • Subdivisions • Construction Layout

117 N. Madriver St.
Bellefontaine OH 43311



Phone: (937) 593-7335
Fax: (937) 593-7444

surveys@lsminc.us

EADS 2.464 ACRES

Lying in Virginia Military Survey 3683, Jefferson Township, Logan County, Ohio.

Being out of the Fred J. Eads, Jr. and Edith Eads 106.050 acre tract as deeded and described in Official Record 456, Page 317 of the Logan County Records of Deeds and being more particularly described as follows:

Commencing on a MAG nail found over a stone on the center-line of Township Road 55 at Station 26+86 (Logan County Engineer's Field Book 555, Page 63).

THENCE, with the center-line of Township Road 55 (60 feet wide), N 84°-00'-17"E, a distance of 221.71 feet to a 1 inch square iron bar found at the TRUE POINT OF BEGINNING.

THENCE, with the east lines of The United Telephone Company original 78.25 acre tract and original 20 acre tract (Vol. 283, Pg. 159 & 161), N 06°-04'-22"W, a distance of 1485.93 feet to a telephone pedestal found, passing 5/8 inch iron rods set at 30.00 feet and 1480.93 feet.

THENCE, with the south line of the Gary E. Allen 64.78 acre tract (O.R. 438, Pg. 992, Tract II), N 84°-57'-14"E, a distance of 225.00 feet to a 5/8 inch iron rod set.

THENCE, S 06°-04'-22"E, a distance of 225.00 feet to a 5/8 inch iron rod set.

THENCE, S 84°-57'-15"W, a distance of 179.99 feet to a 5/8 inch iron rod set.

THENCE, S 06°-04'-22"E, a distance of 1260.19 feet to a MAG spike set on the center-line of Township Road 55, passing a 5/8 inch iron rod set at 1230.19 feet.

THENCE, with the center-line of Township Road 55, S 84°-00'-17"W, a distance of 45.00 feet to the point of beginning.

Containing 2.464 acres, of which 0.031 acre is within the highway right-of-way.

Property is subject to all easements, rights-of-way, restrictions and conditions affecting this property.

The basis for bearings is the center-line of Township Road 55, being N 84°-00'-17"E, and all other bearings are from angles and distances measured in a field survey by Lee Surveying and Mapping Co., Inc. on April 21, 2009.

Description prepared by:



ORIGINAL STAMP IN GREEN

William K. Bruce
Professional Surveyor 7437
April 23, 2009

4759039

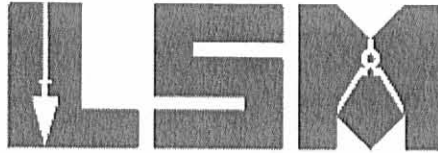


REC'D 4-27-09 SMM/AN

Lee Surveying and Mapping Co., Inc.

Land Surveys • Topography • Subdivisions • Construction Layout

117 N. Madriver St.
Bellefontaine OH 43311



Phone: (937) 593-7335
Fax: (937) 593-7444

surveys@lsminc.us

EADS 20 FEET EASEMENT

Lying in Virginia Military Survey 3683, Jefferson Township, Logan County, Ohio.

Being a 20 feet wide easement over the Fred J. Eads, Jr. and Edith Eads 106.050 acre tract as deeded and described in Official Record 456, Page 317 of the Logan County Records of Deeds and being more particularly described as follows:

Commencing on a MAG nail found over a stone on the center-line of Township Road 55 at Station 26+86 (Logan County Engineer's Field Book 555, Page 63).

THENCE, with the center-line of Township Road 55 (60 feet wide), N 84°-00'-17"E, a distance of 221.71 feet to a 1 inch square iron bar found.

THENCE, with the east line of The United Telephone Company original 78.25 acre tract (Vol. 283, Pg. 159), N 06°-04'-22"W, a distance of 30.00 feet to a 5/8 inch iron rod set on the north right-of-way of Township road 55 at the TRUE POINT OF BEGINNING.

THENCE, with the east line of the said original 78.25 acre tract, N 06°-04'-22"W, a distance of 20.00 feet to a point.

THENCE, N 84°-00'-17"E, a distance of 45.00 feet to a point.

THENCE, S 06°-04'-22"E, a distance of 20.00 feet to a 5/8 inch iron rod set on the north right-of-way of Township Road 55.

THENCE, with the north right-of-way of Township Road 55, S 84°-00'-17"W, a distance of 45.00 feet to the point of beginning.

The basis for bearings is the center-line of Township Road 55, being N 84°-00'-17"E, and all other bearings are from angles and distances measured in a field survey by Lee Surveying and Mapping Co., Inc. on April 21, 2009.

Description prepared by:

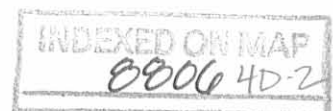


ORIGINAL STAMP IN GREEN

William K. Bruce

William K. Bruce
Professional Surveyor 7437
April 23, 2009

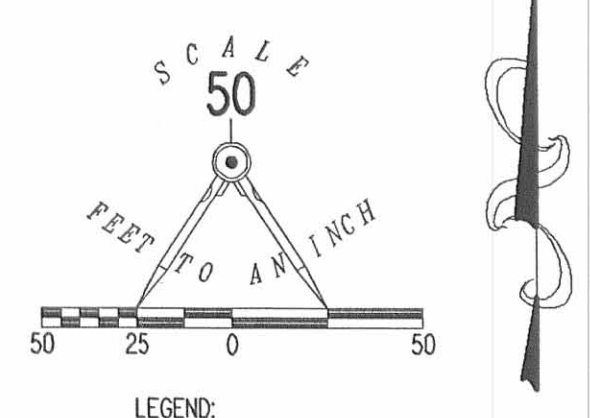
4759039



REV'D 5-5-09 SMJ

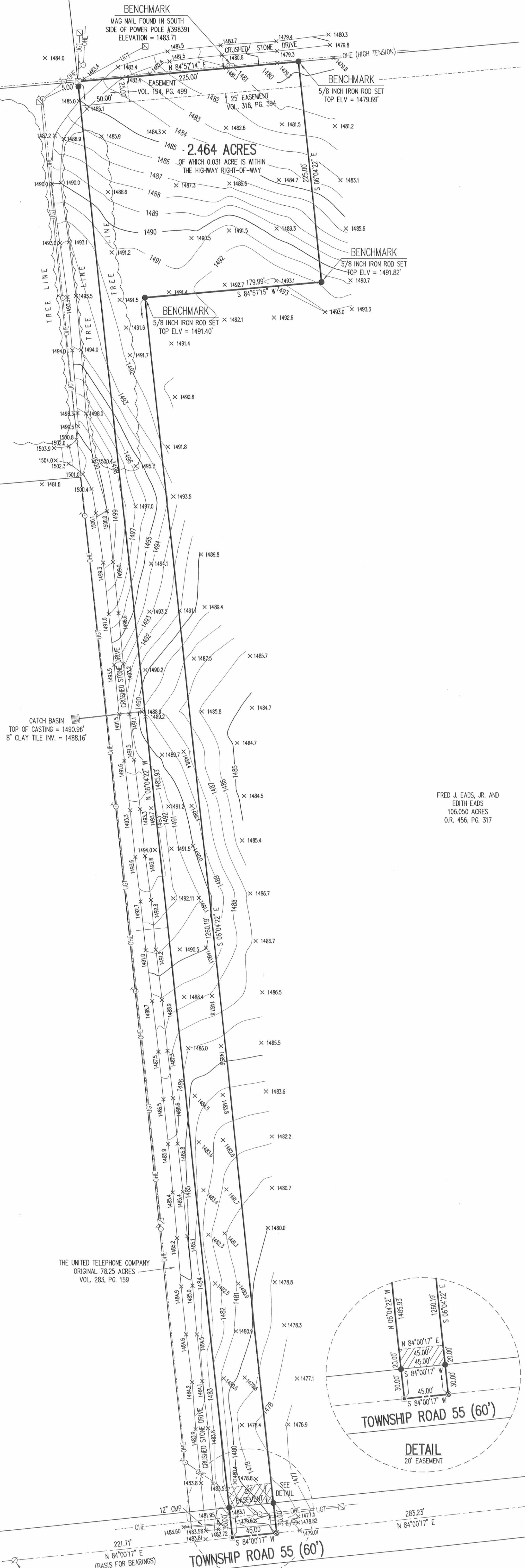
BOARD OF EDUCATION OF THE
OHIO HI-POINT VOCATIONAL-TECHNICAL
CENTER SCHOOL DISTRICT
52.54 ACRES
VOL. 341, PG. 733

GARY E. ALLEN
64.78 ACRES
O.R. 438, PG. 992
TRACT II



- LEGEND:
- 1 INCH SQUARE IRON BAR FOUND
 - MAG SPIKE SET
 - ⊗ RAILROAD SPIKE FOUND
 - ⊙ MAG NAIL FOUND OVER STONE
 - 5/8 INCH IRON ROD FOUND
 - 5/8 INCH IRON ROD SET
 - ⊙ POWER POLE
 - TELEPHONE PEDESTAL
 - CATCH BASIN
 - UGT = UNDERGROUND TELEPHONE
 - OHE = OVERHEAD ELECTRIC

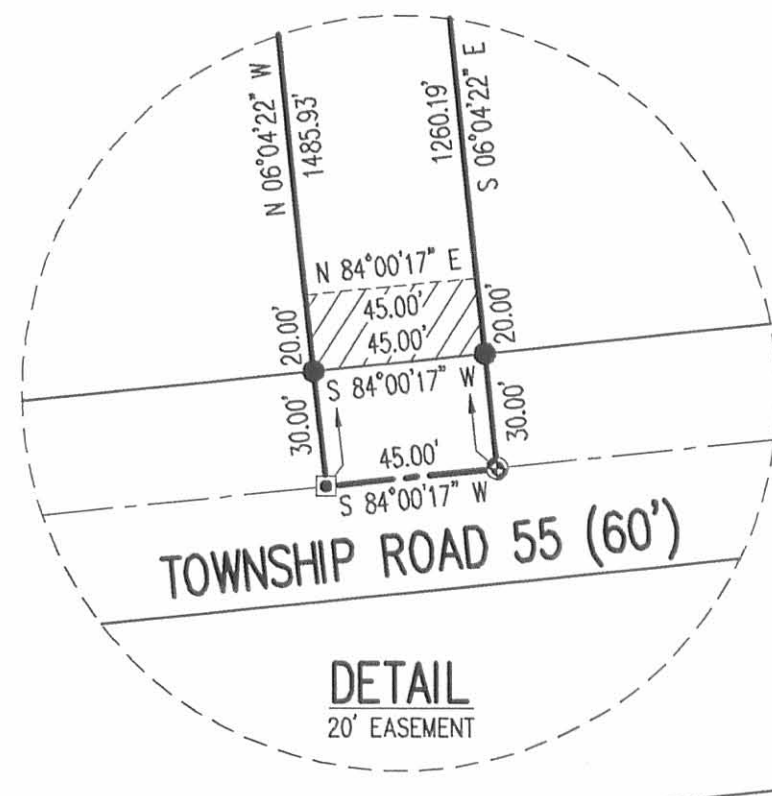
THE UNITED TELEPHONE COMPANY
ORIGINAL 20 ACRES
VOL. 283, PG. 161



FRED J. EADS, JR. AND
EDITH EADS
106.050 ACRES
O.R. 456, PG. 317

CATCH BASIN
TOP OF CASTING = 1490.96'
8" CLAY TILE INV. = 1488.16'

THE UNITED TELEPHONE COMPANY
ORIGINAL 78.25 ACRES
VOL. 283, PG. 159



**SURVEY AND TOPOGRAPHY OF
2.464 ACRES OUT OF THE
FRED J. EADS, JR. AND
EDITH EADS
106.050 ACRE TRACT
OFFICIAL RECORD 456, PAGE 317
VIRGINIA MILITARY SURVEY 3683
JEFFERSON TOWNSHIP
LOGAN COUNTY, OHIO**

REFERENCE BENCHMARK:
ALUMINUM DISK FOUND AT OHIO HIGH POINT J.V.S. MARKING THE HIGHEST POINT IN OHIO
DISK STAMPED WITH ELEVATION OF 1548.81'

NOTE:
THE UNDERGROUND UTILITIES SHOWN HAVE BEEN LOCATED FROM A FIELD SURVEY OF ABOVE GROUND
STRUCTURES AND EXISTING DRAWINGS PROVIDED TO THE SURVEYOR. THE SURVEYOR MAKES NO GUARANTEE THAT
THE UNDERGROUND UTILITIES SHOWN ARE IN THE EXACT LOCATION INDICATED. ALTHOUGH HE DOES STATE THAT
THEY ARE LOCATED AS ACCURATELY AS POSSIBLE FROM INFORMATION AVAILABLE. THE SURVEYOR HAS NOT
PHYSICALLY LOCATED THE UNDERGROUND UTILITIES. ADDITIONAL BURIED UTILITIES/STRUCTURES MAY BE
ENCOUNTERED.

SURVEYED BY:
WILLIAM K. BRUCE
PROFESSIONAL SURVEYOR 7437
APRIL 21, 2009
REVISED MAY 5, 2009

ORIGINAL STAMP IN GREEN
COPYRIGHT 2009 BY:
LEE SURVEYING & MAPPING CO., INC.
117 North Modriver Street
BELLEFONTAINE, OHIO 43311
(937) 593-7335
surveys@lisminc.us
KSS D0409 4759039 L-4759-1

2 WORKING DAYS
BEFORE YOU DIG
CALL TOLL FREE 800-362-2764
OHIO UTILITIES PROTECTS ON SERVICE.

STATION 26+86
(LOGAN COUNTY ENGINEER'S
FIELD BOOK 555, PAGE 63)

INDEXED ON MAP
2206 HP