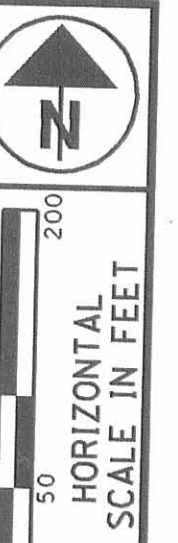


# Vacation of Right Of Way Plat

Logan County  
Jefferson Township

V.M.S. 3216

NOTE: LOG-33-21.51 R/W PLANS  
USED TO RE-ESTABLISH THE R/W

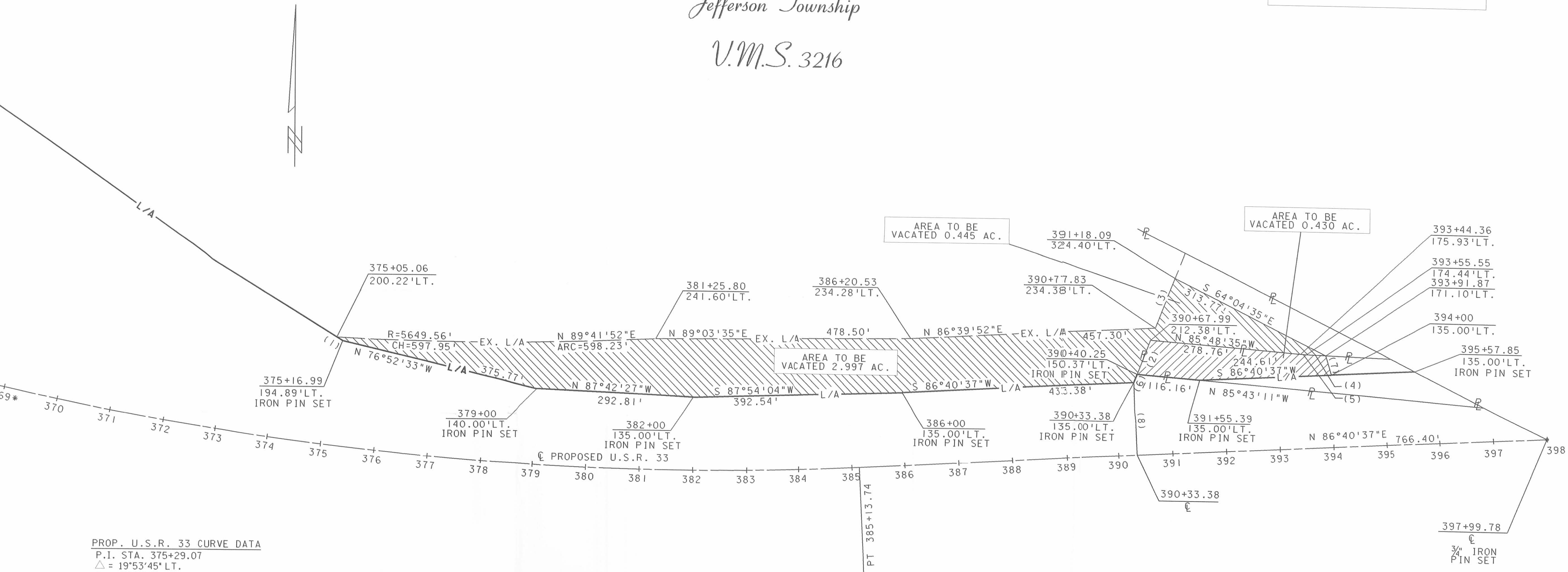


FEDERAL PROJECT NO.  
STATE JOB NO.

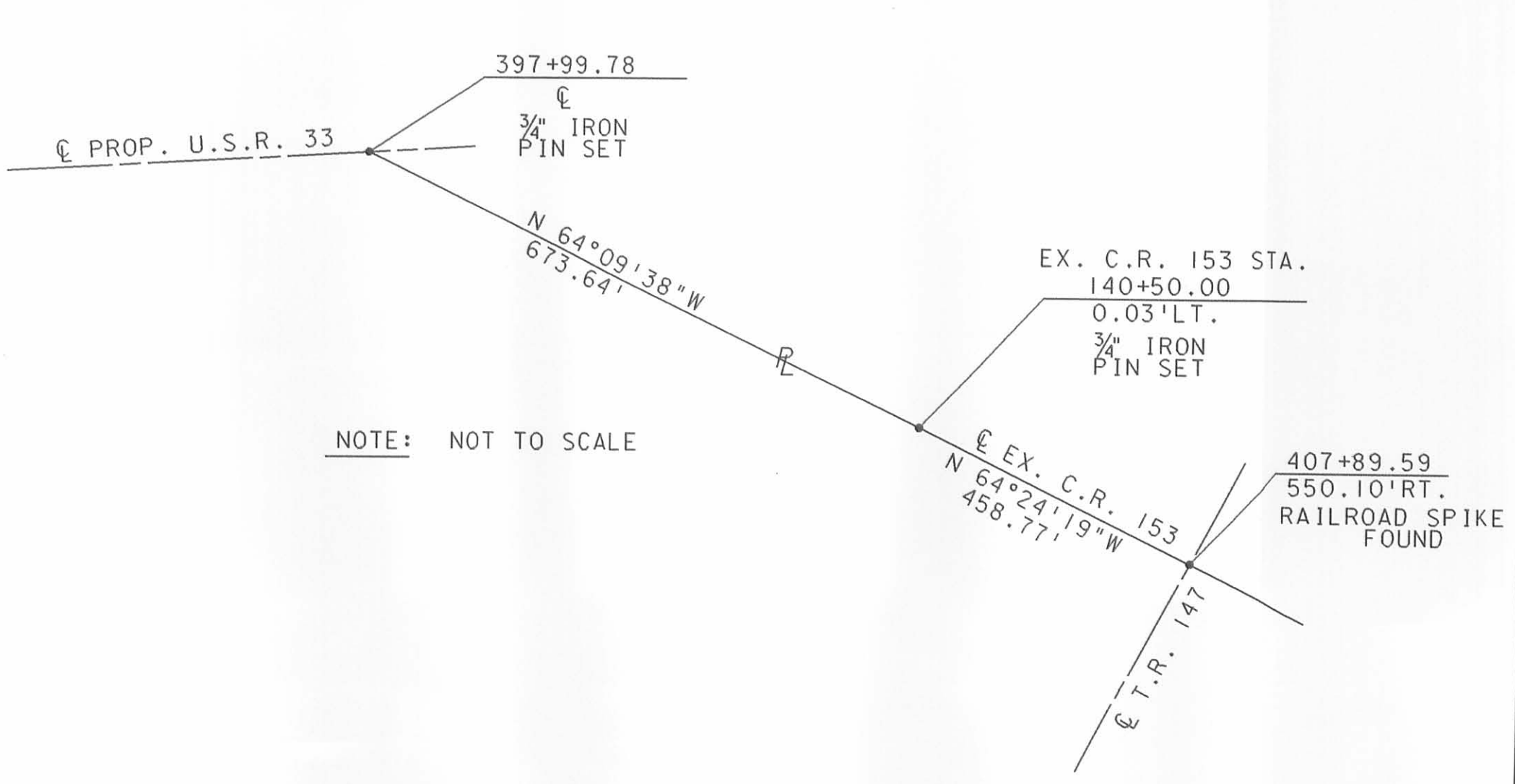
VACATION OF RIGHT-OF-WAY PLAT

LOG-33-21.51

INDEXED ON MAP  
9076 1P



PROP. U.S.R. 33 CURVE DATA  
P.I. STA. 375+29.07  
Δ = 19°53'45" LT.  
D = 1°00'00"  
R = 5729.58'  
T = 1004.91'  
L = 1989.58'



NOTE: NOT TO SCALE

TANGENT TABLE		
NO.	DISTANCE	BEARING
1	12.69'	N 58°27'53"W
2	67.93'	N 20°46'41"E
3	98.62'	N 20°46'29"E
4	36.47'	N 88°04'32"W
5	11.29'	N 85°44'19"W
6	16.84'	N 20°45'37"E
7	37.01'	S 16°00'49"E
8	135.00'	N 03°19'23"W