

REC'D 7-31-08 GMY/OLC

Lee Surveying and Mapping Co., Inc.

Land Surveys • Topography • Subdivisions • Construction Layout

117 N. Madriver St.
Bellefontaine OH 43311



Phone: (937) 593-7335
Fax: (937) 593-7444

HOLYCROSS 3.069 ACRES

Lying in Virginia Military Survey 3439, Jefferson Township, Logan County, Ohio.

Being out of the Raymond Holycross and Lois Holycross 39.82 acre tract as deeded and described in Volume 210, Page 400 of the Logan County Records of Deeds and being more particularly described as follows:

Commencing on a MAG nail found on the intersection of the center-lines of Township Road 184 and Ohio Route 540.

THENCE, with the center-line of Ohio Route 540 (60 feet wide), N 84°-33'-12"E, a distance of 229.28 feet to a MAG nail set at the TRUE POINT OF BEGINNING.

THENCE, with the center-line of Ohio Route 540, N 84°-33'-12"E, a distance of 383.96 feet to a MAG nail set.

THENCE, S 05°-26'-48"E, a distance of 348.20 feet to a 5/8 inch iron rod set, passing a 5/8 inch iron rod set at 30.00 feet.

THENCE, S 84°-33'-12"W, a distance of 383.96 feet to a 5/8 inch iron rod set.

THENCE, N 05°-26'-48"W, a distance of 348.20 feet to the point of beginning, passing a 5/8 inch iron rod set at 318.20 feet.

Containing 3.069 acres, of which 0.264 acre is within the highway right-of-way.

The basis for bearings is the center-line of Ohio Route 540, being N 84°-33'-12"E, and all other bearings are from angles and distances measured in a field survey by Lee Surveying and Mapping Co., Inc. on July 25, 2008.



ORIGINAL STAMP IN GREEN

Description prepared by:

William K. Bruce
Professional Surveyor 7437
July 29, 2008

134078



REC'D 7-31-08 SKM BK
Lee Surveying and Mapping Co., Inc.

Land Surveys • Topography • Subdivisions • Construction Layout

117 N. Madriver St.
Bellefontaine OH 43311



Phone: (937) 593-7335
Fax: (937) 593-7444

**HOLYCROSS
37.453 ACRES**

Lying in Virginia Military Survey 3439, Jefferson Township, Logan County, Ohio.

Being out of the Raymond Holycross and Lois Holycross 39.82 acre tract as deeded and described in Volume 210, Page 400 of the Logan County Records of Deeds and being more particularly described as follows:

Beginning on a MAG nail found on the intersection of the center-lines of Township Road 184 and Ohio Route 540.

THENCE, with the center-line of Ohio Route 540 (60 feet wide), N 84°-33'-12"E, a distance of 229.28 feet to a MAG nail set.

THENCE, S 05°-26'-48"E, a distance of 348.20 feet to a 5/8 inch iron rod set, passing a 5/8 inch iron rod set at 30.00 feet.

THENCE, N 84°-33'-12"E, a distance of 383.96 feet to a 5/8 inch iron rod set.

THENCE, N 05°-26'-48"W, a distance of 348.20 feet to a MAG nail set on the center-line of Ohio Route 540, passing a 5/8 inch iron rod set at 318.20 feet.

THENCE, with the center-line of Ohio Route 540, N 84°-33'-12"E, a distance of 391.77 feet to a MAG nail set.

THENCE, with the west lines of the Jean Wendling 1.00 acre tract (Vol. 388, Pg. 110) and 5 acre tract (Vol. 388, Pg. 108, Tract One), S 04°-32'-32"E, a distance of 756.81 feet to a 5/8 inch iron rod set, passing a 5/8 inch iron rod set at 30.00 feet.

THENCE, with the south line of the said 5 acre tract, N 84°-29'-12"E, a distance of 346.50 feet to a 5/8 inch iron rod found.

THENCE, with the west line of the P. Dwayne Bradley 64.131 acre tract (O.R. 458, Pg. 33), S 06°-05'-30"E, a distance of 763.73 feet to a point.

THENCE, with the north lines of the Walter L. Lamb, Jr.; 22.891 acre tract (Vol. 378, Pg. 114) and the Andrew G. Shaw 2.027 acre tract (O.R. 676, Pg. 684), S 84°-40'-53"W, a distance of 1328.89 feet to a MAG nail set on the center-line of Township Road 184, passing 5/8 inch iron rods found at 0.43 feet and 1298.89 feet.

THENCE, with the center-line of Township Road 184 (40 feet wide), N 06°-10'-30"W, a distance of 1517.15 feet to the point of beginning.

Containing 37.453 acres, of which 1.111 acres are within the highway rights-of-way.

The basis for bearings is the center-line of Ohio Route 540, being N 84°-33'-12"E, and all other bearings are from angles and distances measured in a field survey by Lee Surveying and Mapping Co., Inc. on July 25, 2008.



ORIGINAL STAMP IN GREEN

Description prepared by:

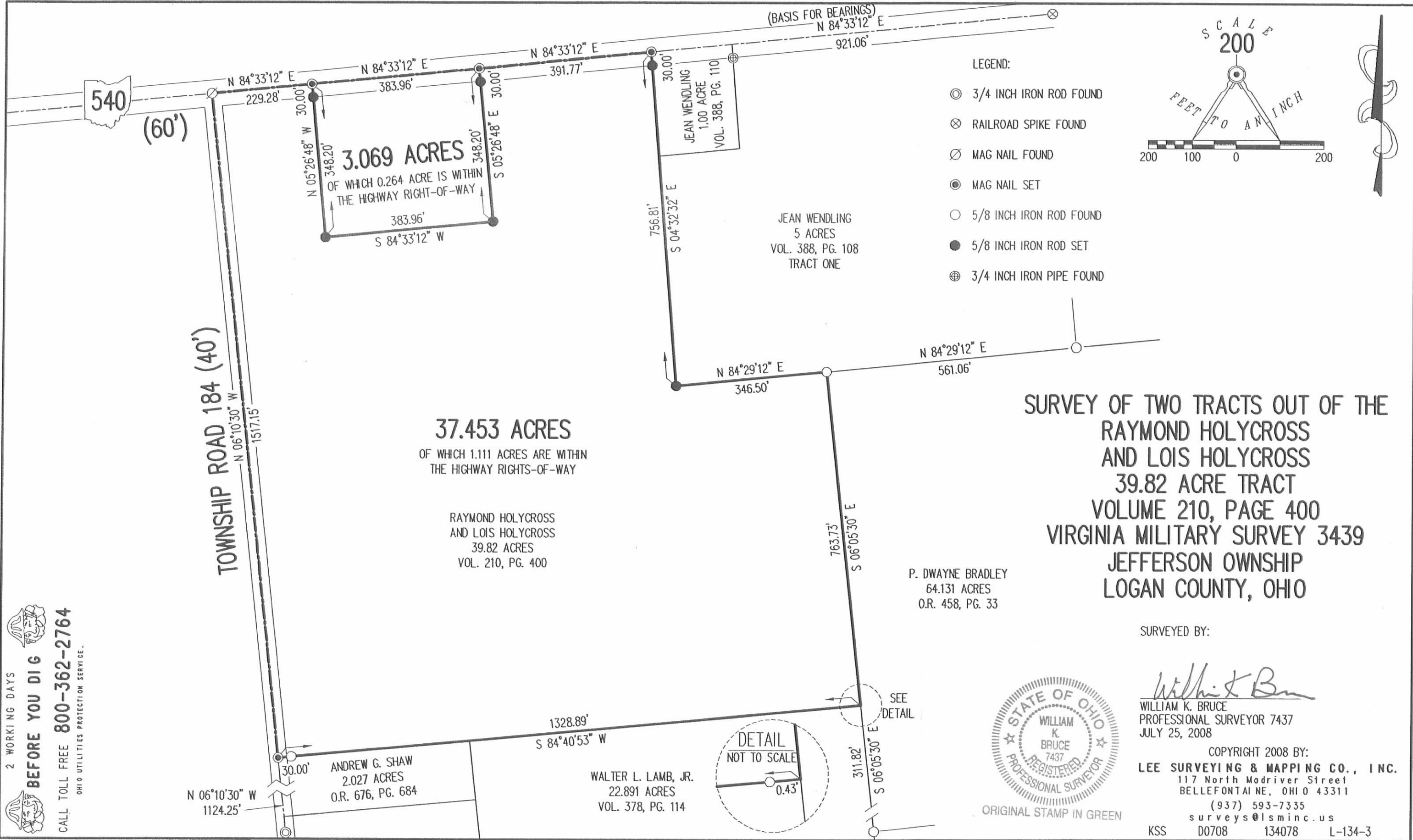
A handwritten signature in cursive script that reads 'William K. Bruce'.

William K. Bruce
Professional Surveyor 7437
July 29, 2008



134078

REV'D 7-31-08 S.M.A.



2 WORKING DAYS
BEFORE YOU DIG
CALL TOLL FREE **800-362-2764**
OHIO UTILITIES PROTECTION SERVICE.

INDEXED ON MAP
9580 IP



SURVEYED BY:
William K. Bruce
WILLIAM K. BRUCE
PROFESSIONAL SURVEYOR 7437
JULY 25, 2008

COPYRIGHT 2008 BY:
LEE SURVEYING & MAPPING CO., INC.
117 North Madriver Street
BELLEFONTAINE, OHIO 43311
(937) 593-7335
surveys@lsminc.us
KSS D0708 134078 L-134-3