

FB 712

Part of T.R. 127  
 Jefferson Twp.  
 Logan Co., Ohio

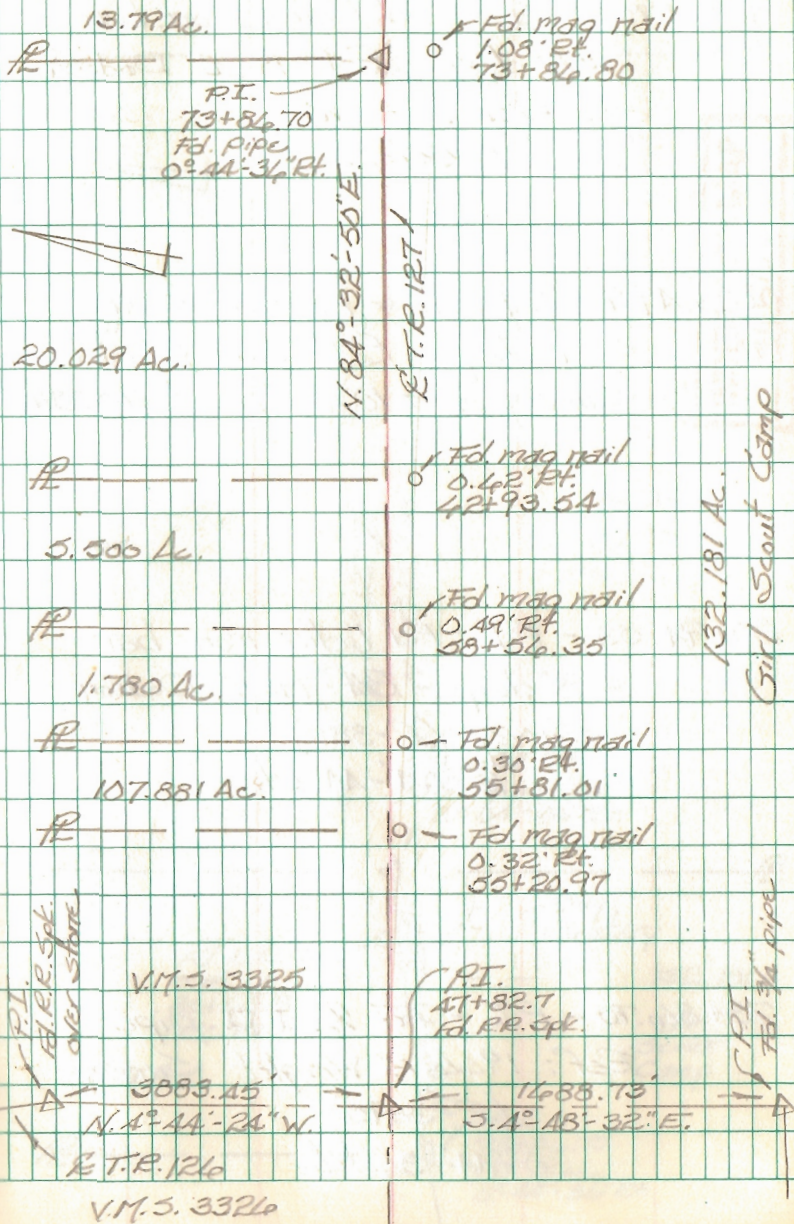
73+86.70 - P.I. - Fd. 1/2" I.D. pipe -  
 Ref: 1966 F. Wright Survey  
 (R-3895)  
 0° 44' - 34" Et.

47+82.7 - P.I. - Fd. R.R. Spike  
 over stone - Intersection  
 T.R. 127 w/ T.R. 126 - Stationing  
 comes from F.Bk. # 707, pg. 73 -  
 start of this survey.

INDEXED ON MAP  
 9456

B. Simmons  
 G. Dappert  
 C. Dill

Aug. 2011





FB 712

Part of T.R. 127  
Jefferson Twp.  
Logan Co., Ohio

92+31.75 - P.I. - Fd. 1" dia. iron bar  
≈ 8" deep - Ref: 1965 Dodson  
Survey (R-3811)  
1°-55'-04" Lt.

87+49.72 - P.O.T. - Fd. R.R. Spike  
≈ 4" deep - Ref: 1998 Blackburn  
Survey of a 10 Ac. tract (R-3811).

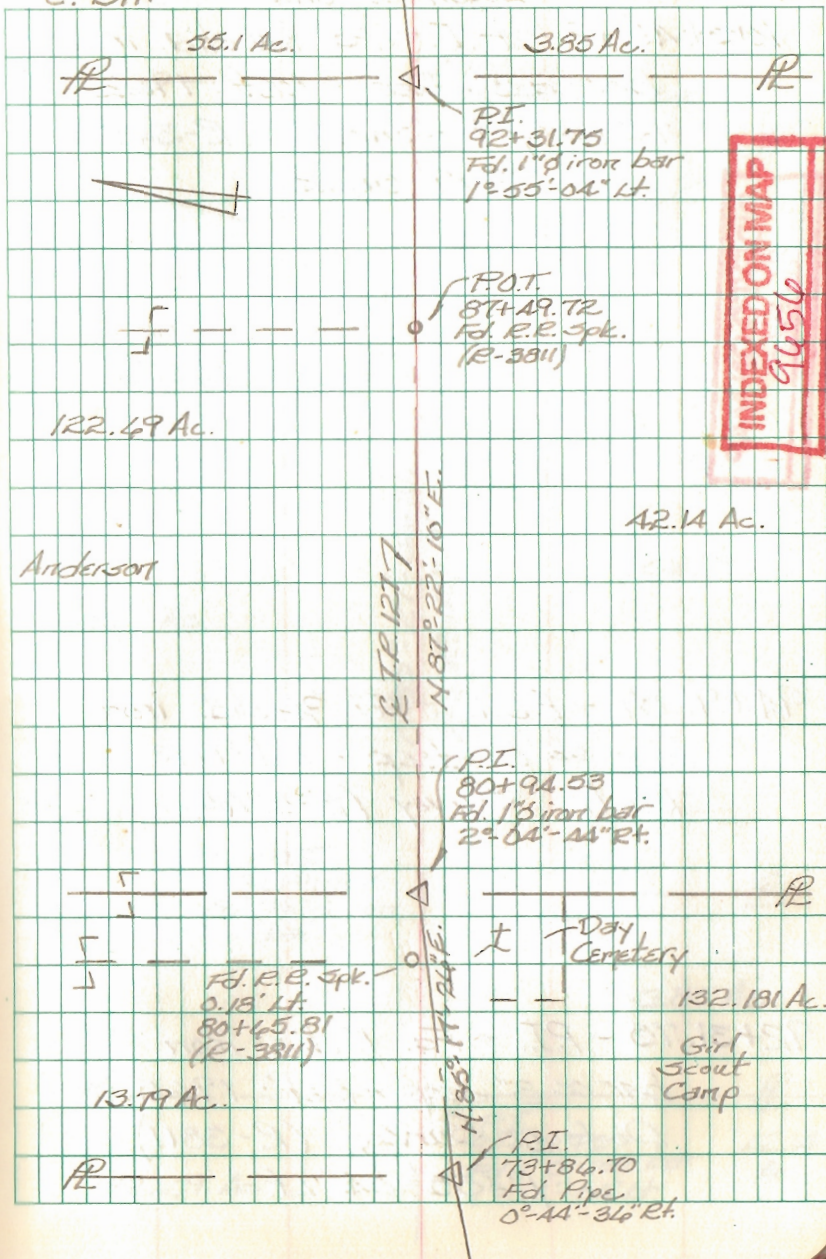
80+94.53 - P.I. - Fd. 1" dia. iron bar  
≈ 8" deep - Ref: 1965 Dodson  
Survey (R-3811).  
2°-04'-11" Rt.

73+86.70 - P.I. - Fd. 1/2" I.D. pipe -  
Ref: 1966 F. Wright Survey  
(R-3895)  
0°-11'-36" Rt.

B. Simmons  
G. Dappert  
C. Dill

Aug. 2011

87





FB 712

Part of T.R. 127  
Jefferson Twp.  
Logan Co. Ohio

105+48.92 - P.I. - Fd.  $\frac{5}{8}$ " dia. iron  
bar  $\approx$  8" deep - Ref: 1962  
F. Wright Survey (R-3492).  
0°-19'-54" Rt.

INDEXED ON MAP  
9/15/6

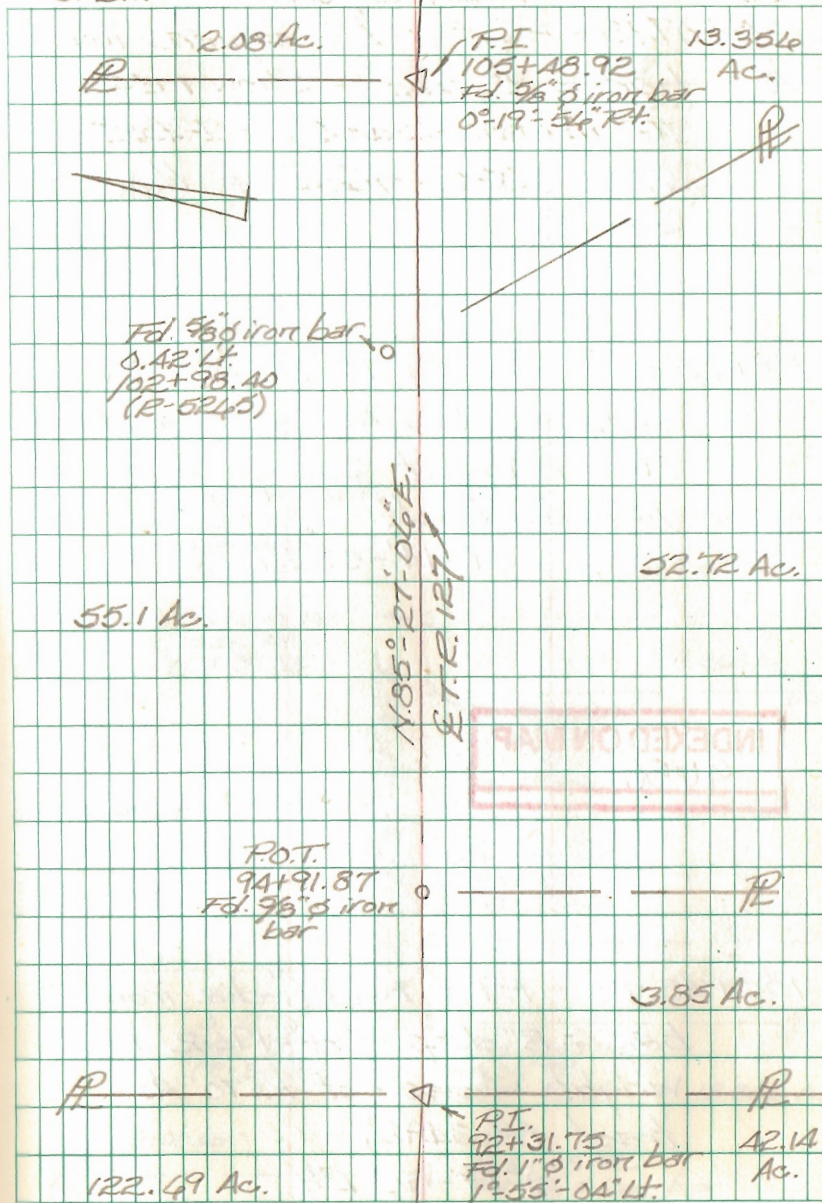
94+91.87 - P.O.T. - Fd.  $\frac{5}{8}$ " dia. iron  
bar  $\approx$  8" deep - Ref: 1973  
Kurtz Survey (R-5245).

92+31.75 - P.I. - Fd. 1" dia. iron  
bar  $\approx$  8" deep - Ref: 1945  
Dodson Survey (R-3811)  
1°-55'-04" Lt.

B. Simmons  
G. Dappert  
C. Dill

Aug. 2011

68



INDEXED ON MAP



FB 712

Part of T.R. 127  
Jefferson Twp.  
Logan Co., Ohio

125+07.13 - P.I. - Fd. 1" square iron  
bar  $\approx$  8" deep - Show it as  
T.R. 129 sta. 3A+30 in F.B.K.#  
425, pg. 30. - End of this  
survey

118+33.39 - P.I. - Fd. 1 1/2" I.D. pipe over  
stone - Ref: F.B.K. #425, pg. 30;  
1962 F. Wright Survey of  
10.70 Ac. tract.  
89°-14'-53" Rt.

INDEXED ON MAP  
9456

105+43.92 - P.I. - Fd. 3/8" dia. iron  
bar  $\approx$  8" deep - Ref: 1962 F.  
Wright Survey of 10.70 Ac.  
tract (R-3492).  
0°-19'-54" Rt.

B. Jimmoris  
G. Dappert  
C. Dill

Aug. 2011

