

(cloudy) Oct 22nd 1898William Shaffer found ch
Mr & Paris Bk.Start stone N.E. & Ken land in post road
mit Hick 12" S 3 W 20.8"

Thence with road S 83 3/4 W

at 260.2 ft planted stone sig head 8" x 10"
fall N of stone 17" Var to for N 17"Start at stone planted N.W. & Ken, 10' W of &
S 5 1/2 E at 1400 set v line E/V dist

at about 1800 set E 20' } Reting line

" " 2200 " E 12' S 5 1/2 E

" 3634' pass 34' E of line stone

" 3931' < fence S W & Ken fall 2.49'

Went back to & made for Shaffer then

set v in cut fence row at 1400 1/2 ft

orange fall on set of v 7' 7" orange 2' 5"

start at v S W & Shaffer in fence

S 81 1/4 E at 1528' make < in pike

255.9' E of cut gravel = S 9 < Shaffer

257

INDEXED ON MAP

(Rain p.m.)

Start at S E Shaffer with pike
or 34 1/4 E, at 1736' made < S E < Shaffer
in line old fence (take 17' each way)

Start S E < Shaffer

N 4 1/2 W with old Ken line

at 471' set N E & Ken stone in
road place of top.

Oct 24-98

Planted new stone N.E. & Saul McEoy
& N.W. & L.J. Shaffer. present LawrenceKerr, & Mr Robt. come agreed to by
all parties as true corner. sig head

stone 20" x 9" x 6". Pick out as follows

White hick 9" S 7 1/2 E = 48.2 feet

White ash 2.2" S 68 3/4 E = 45.9 feet

Measure from Shaffer S W & S S E 526 ft

Planted sig head 18" x 10" x 10" at SW & Shaffer

in fence row. order by S. McEoy

mit Oak or Oak 20" N 77 1/4 E 34'

" Shell Hick 18" N 4 1/2 W 92 1/2'

176 Lawrence Kerr Surv Oct 24
 Course 3 line Shaffer S 81 3/4 E
 wit SE < shaffer
 pent line stone cut N 34 1/4 E 23'
 wit NE < on pike Shaffer
 W. ash 22" N 1/2 W 42' 7 1/2"
 cent pike N 3' 3" (cut grand)

Field Notes.

a: Stone ^{on pce of Hick} in center of pub. road 15' N. of fence
 and N. W cor. Surv. No. 3442. (stone 20" x 9" x 6")

Wit. White hick 9' S 7 1/2 E 48.2 ft = 7.3 links
 " W. Ash 22" S 68 3/4 E 45.4 = 6.9 "

a to b = N 83 3/4 E 2602 ft = 39.43 chains

b = Stone in cut pub. road. (old corner.)

Wit. Shal. Hick 12" S 3 W 20'. 8" = 3 1/3 links

b to c = S 4 1/2 E 47 feet = 7.14 chains

c = rig head stone in pike 5' 3" East of cut grand.

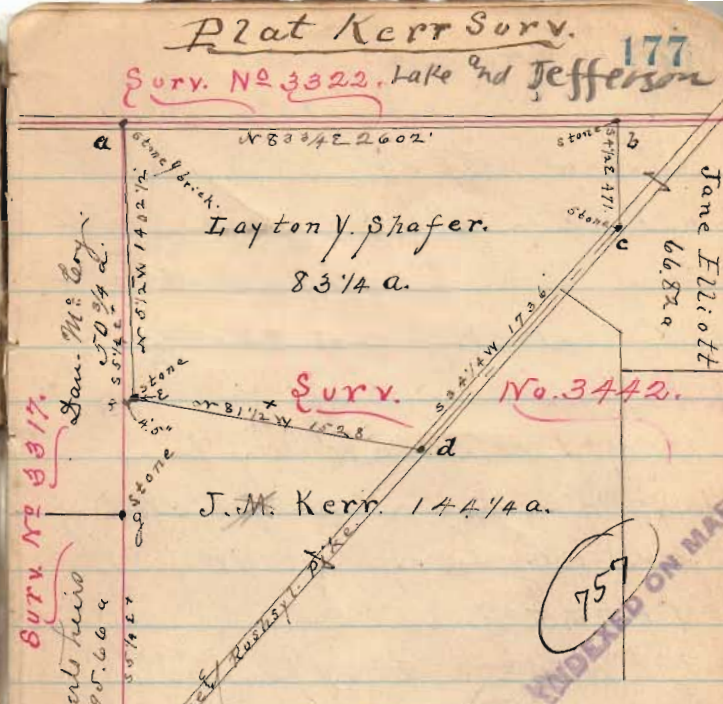
Wit W. ash 22" (not marked) N 1/2 W 42' 7" = 6 1/2 links

c to d = with pike S 34 1/4 W 173.6 feet = 26.30 ch.

Wit: line c-d. passes center line of stone box

cut out under pike at 1713' = 25.95 chains

d = center line cut. N 34 1/4 E 23'. (see top this page)
d = 2' 8" E of cut grand in pike



Field notes concluded.

d to e = N 81 1/2 W 152.8' = 23.15 ch

e = rig head stone in cut old fence row.

Wit. Sun line west 4' 5"

" W. Ash 20" N 77 1/4 E 34 ft = 5 1/2 links

" Shal. Hick 18" N 4 1/2 W 92 1/2 ft = 140 "

f = post in sun line N 5 1/4 W 52.6' from stone g.

g = old < stone in sun line S. E < to D. M. Kerr.

e to g S 5 E 52.6' = 7.97 chains

e to a = S 5 1/2 W 1402 1/2 ft =