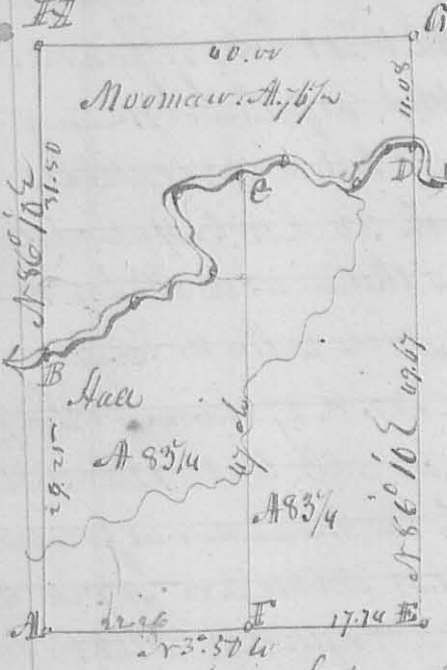


Aug 1835

Corner stake standing in the center of the creek, thence down the creek with its meanders as follows S30°E 11.50 S22°E 8.50 N66°E



g. 40 S 18 E 12.30 S 15 W 7.50 S 37 E 5.00
 S 47 W 2.50 to a stake in the south line of the lot see letter D thence with said line S 86.10 W 49.67 ch to the SW corner of the section thence N 3° 50' W 40 chains to the beginning containing 166 1/2 acres - divided by the right line C F into two equal parts as follows Beginning at H in the west line of the section 17.74 from the SW corner at a Post 15 1/2 S 47 E 7 Links Red 8 1/2 S N 2 E 42 1/2 Links thence N 86.10 E cupping a small branch several times 47 ch. to a stake on the river bank

Comers

Description of Comers. At pt. com B. forked willow & ash above described. E. Sect. corner II. Corner of Moomaw land. Red Elm 36 1/2 N 25 W 17 1/2 Links. Ironwood 6 1/2 S 50 W 36 Links. C. Post 18 1/2 N 38 W 30 Links. Sugar tree 17 1/2 S 8 Links.

Aug 1. 1835

Dan Hopkins S. P. C.

N^o 285

8353

Surveyed for R. Patterson Fifty acres of Land being part of the NW q^r of sect. 527 3^d R. 14 W. R. 1 as follows beginning at the SW corner of the sect. thence N 7/8 E 40 chains to a Black Oak 22 1/2 N 36 W 42 Links. White Oak Grub 2 1/2 S 11 E 39 L. thence S 89 E 12 ch. 30 Links to a Black Oak 27 1/2 N 33 E 24 Links a Black Oak Grub 2 1/2 S 69 W 36 Links thence 1/2 W 40 chains to a stake in a prairie in the south line of the section thence N 89 1/2 W 12 ch. 50 Links to the beginning. Containing 50 acres.

Aug. 1835

Dan Hopkins S. P. C.

N^o 286

8354

Surveyed off the NW q^r of S 18 T. 5. N. R. 2 beginning at the S. E. corner of said quarter a White Oak 15 1/2 N 36 W 12 1/2 Links. W. O 8 1/2 S 11 E 5 Links thence S 86.10 W 6 ch. 50 to a White Oak 15 1/2 N 20 W 29 Links. Hickory 8 1/2 N 61 E 34 Links. thence N 3° 30' W 30 ch 7/8 to Red Oak 15 1/2 N 70 E 22. W. O. 12 1/2 N 14 W 15 Links. thence N 86.10 E 6 ch. 30 L to a W. O. 16 1/2 N 56 E 4 Links. Hickory 22 1/2

Oct- 1835

S 71 W 18 L. thence S 3° 50' E 30.76 to beginning Containing 90 acres. D. Hopkins S. P. C.