

DESCRIPTION FOR WM. H. HONE.

TRACT EAST OF PIKE.

+++++

The following described land situated in Lake Township, Logan County, Ohio, and being a part of Survey No. 3317, and bounded and described as follows:-

Commencing at an iron bar in the center of the Bellefontaine and Northwood pike, at the northwest corner of a 1 acre tract sold to Effie T. Royer.

Thence with the north line of said tract, N 84 E, 5.33 chains to a stone at the northeast corner of said tract.

Thence with the north line of a 5 acre tract sold to said Royer, N 87 E, 8.40 chains to a stone at the northeast corner of said tract.

Thence with the north line of a 3 acre tract sold to Charles H. Dowell, N 83 $\frac{1}{2}$ E, 5.81 chains to a large anchor post at the northeast corner of said tract.

Thence with the east line of said tract, S 6 E, 5.18 chains to a stone in the south line of said survey.

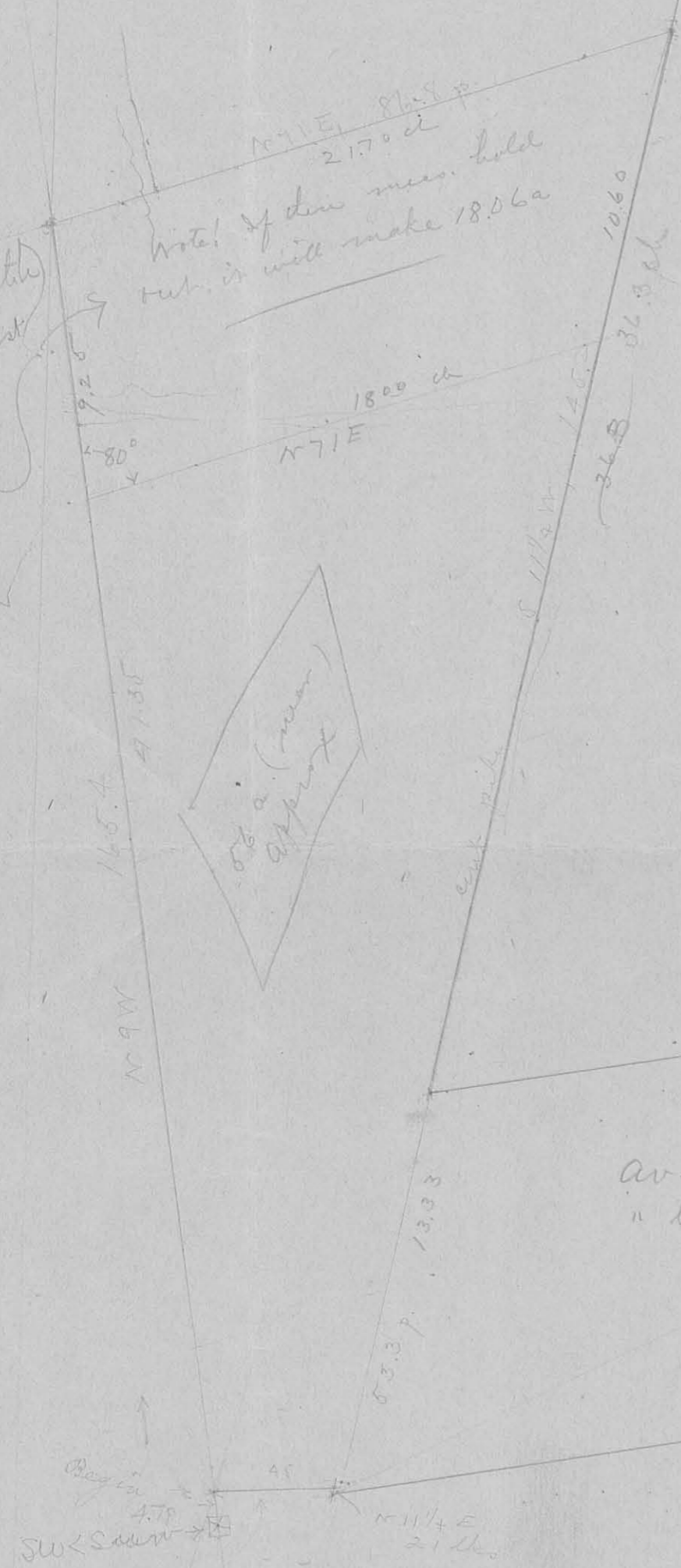
Thence with said survey line, N 84 E, 16.27 chains to a stone.

Thence with the west line of land formerly owned by P. S. Powell, and the west line of land owned by John B. Donahue, N 2 $\frac{1}{2}$ E, 12.85 chains to a stone in the south line of the land owned by Stephen S. Lee.

Thence with said line, S 83 $\frac{1}{2}$ W, 35.05 chains to an iron bar driven in the center of aforesaid pike.

Thence with the center of said pike, S 15 W, 7.26 chains to the place of beginning, containing 34.62 acres of land.

To find width
at A & B, mult. west
line by .985
= sin. 80°



907 28

Wm a. Home

Surv. 3317

N. of Bellog

Pr. E. of road. (by scale)
 Av. wid = 12.70
 " len = 36.31
 45.36 a (approx. only)

Region
 SW ← S 80 W →
 N 11 1/4 E
 21 ft.
 westward
 about 18 p.