

Size 34 T4 1:4  
Fair Ground Sewer

Found iron bar <sup>and stone</sup> and  
coal at SE of Fair Ground  
Mass. W. with road  
at 1095.9 iron bar, curv  
St. to S. (Bellemeir add.)  
at 10.53 (82 poles) Korus  
fence to N. (dead calls for  
82.16 poles)  
at 1536.9, 7 in cent Main  
St.  
at 1537.4 iron bar in  
Main St.

24  
Aug 6-07

Start bar at X roads  
Mass N on Main St.  
at 272.2 N. line Korus  
bar

Main St 54 1/2 W

Wit iron bar 511' W. of  
Cent Main on Fair Ave

Apple Sew 29.3'

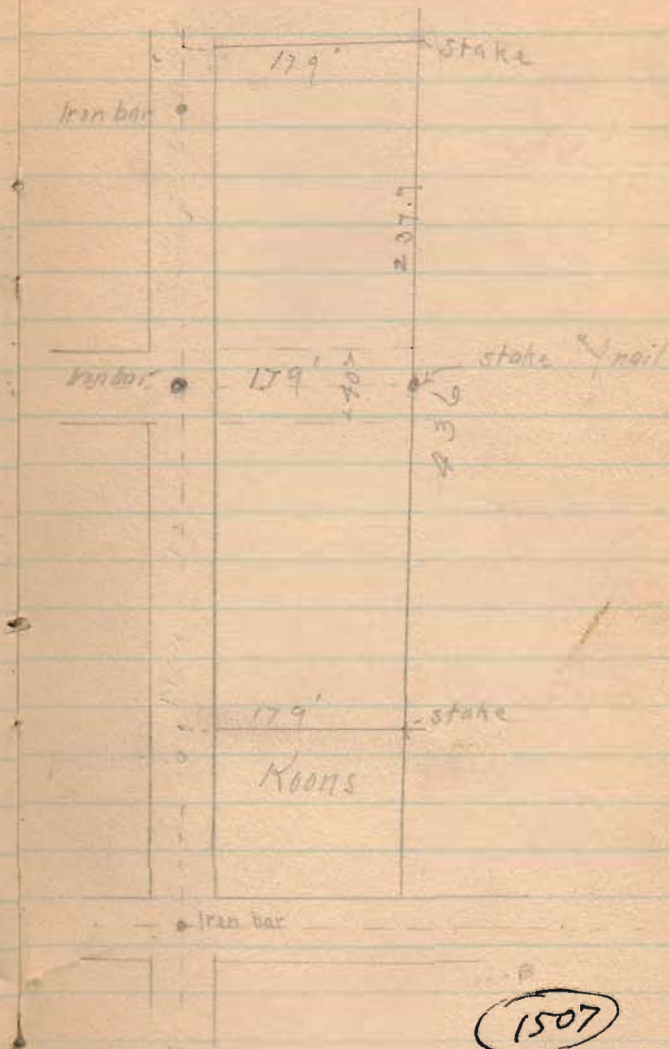
1507

INDEXED ON MAP

Fair Ground

Sewer

25



1507  
INDEXED ON MAP