

Road 57

Harrison Twp - McArthur Twp

60' - Road. Commissioner's Journal 5 Page 4-5

(1836)

60' Road " " 6-79

Placed stakes for 50' road.

1-3-7-9-11 etc

Note: 1" # bar set on back tan

0+00 - 23+65 because of US 33

Relocation used 119.5 North of R/W Mass

on # Old US 33 to set up west end of tan.

See Book 479 Page 32-33

1726

INDEXED ON MAP

168+00

211.130

Concrete

Route 33

03

Pt. 162+90.92

July-16-1936

Clear-95°

F. Wright

G. Wilgus

T. Montgomery

Rub Roberts

Max James

25.35

21+15
710/45

91.0
15" Hickory
15+25

18+15

1" # bar set

7/9/35

Twp.

No Fence

6+12

24.0

5+00

McArthur

Old. Harding

26.5

3+00

28.6

1+00

86

20'

98.0

154

7.35

21.3

119.5

119.5

1/2 APC

Greenile

Thurs line

Stone brick on top

End Conc.

2-22-48
T=140103
E. 1.71

Harrison Twp.

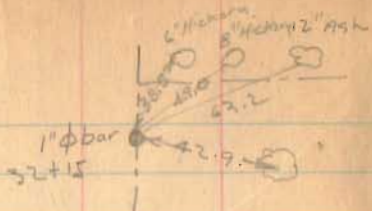
Dennis McKeenan.

P.C. 100+16.92

150+00
9/11/1935
Plant L-27

FB 598

Road 57



29+15 1" # bar set 7/8/65

Note: 1" # bar set on Fwd tan because of U.S. 33 Relocation

23+65

23+65 Stone Fd 7/8/65

$A = 0^{\circ} 36' \text{ Rt}$

(1726)

INDEXED ON MAP

21+15 1" # bar set 7/8/65
see pg 65

7-16-36 .66

Maggie Hellman

31+700

31+685

Alice Kelley

1" # bar set 7/8/65

29+700

12.4

27+00

16.0

25+00

No Fence

550.0

Alice Keller

24+

24+15.3

75.10

24+

45.8

18.0

23+07

1.0.9E. Elec. R.R.

23+65

23+65

23+65

23+65

23+65

23+65

23+65

23+65

23+65

23+65

23+65

23+65

23+65

23+65

23+65

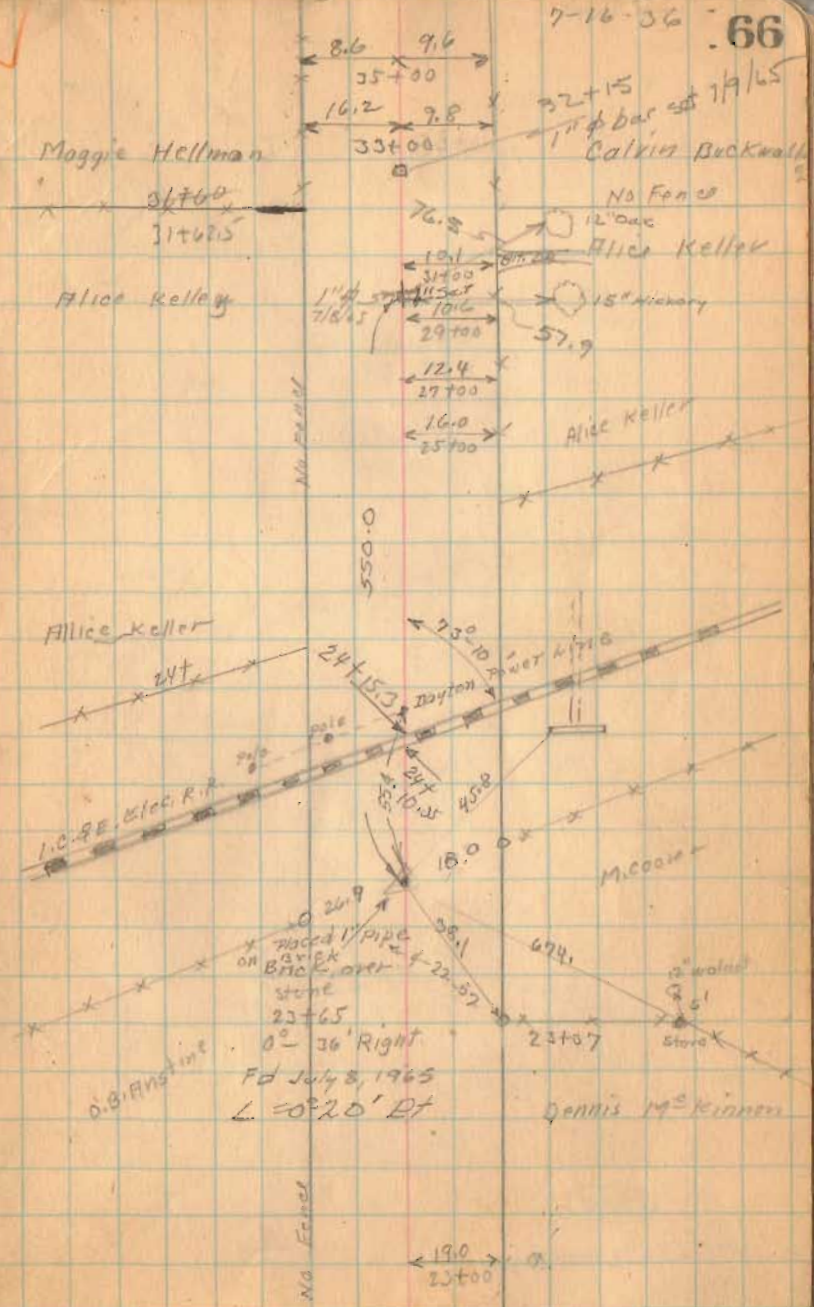
23+65

$0^{\circ} 36' \text{ Right}$
Fd July 8, 1965
 $L = 0^{\circ} 20' \text{ Rt}$

Dennis M^r Kinnear

19.0
23+00

No Fence



22+24.7
13+08.5

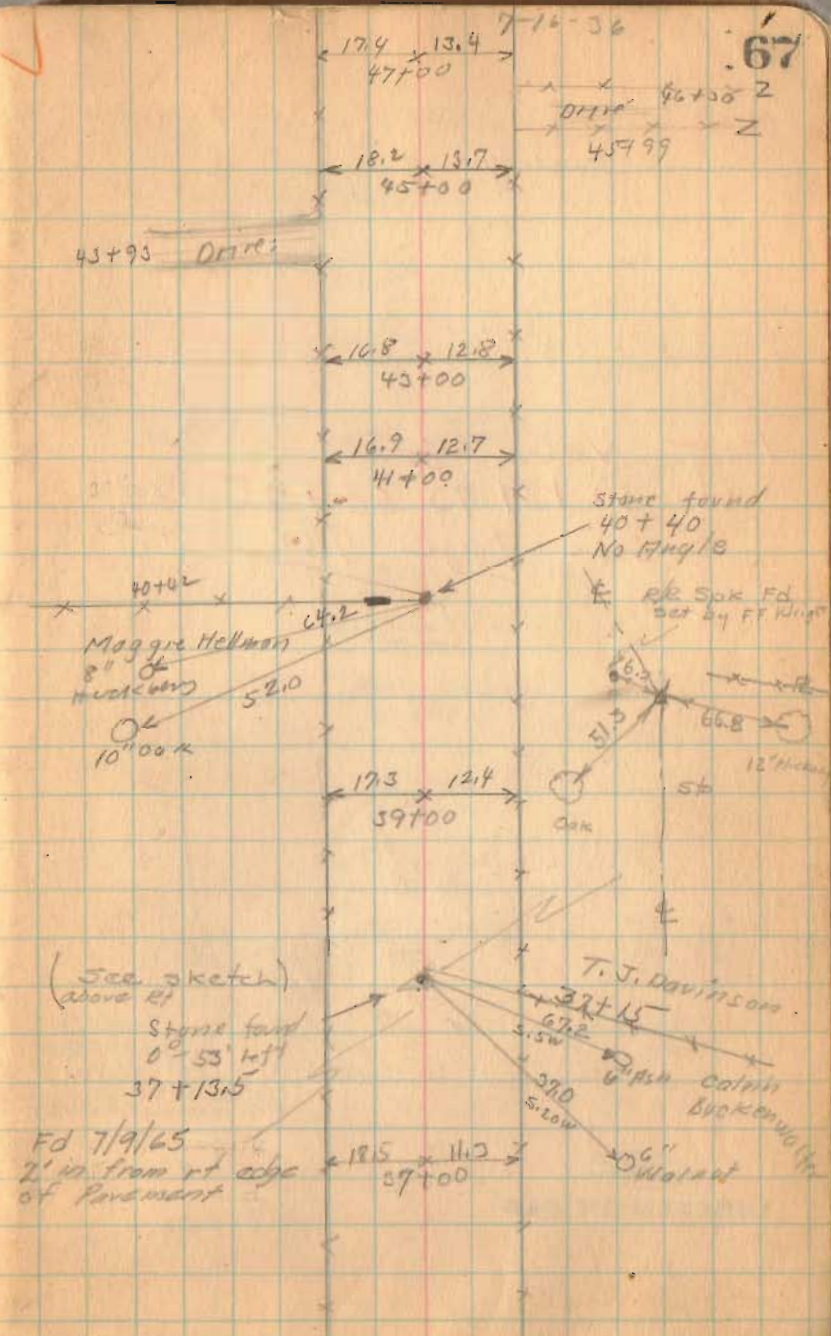
Road 57 8+76.2

37+13.5
29+6.5
13 48.5

40 A. on East

1726

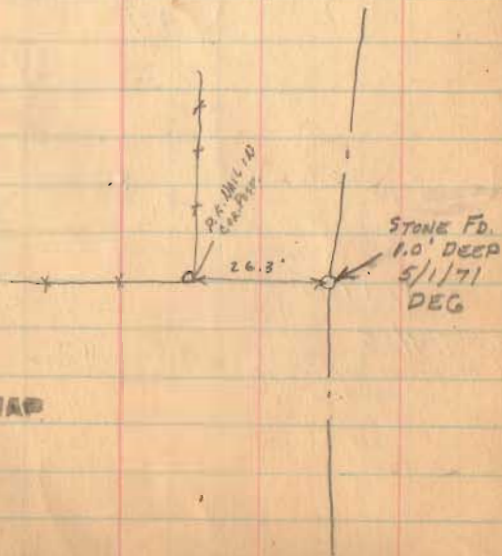
INDEXED ON MAP



FB 598

Road 57

For New of
sta. 30+21 TO 68+25
see Page 76

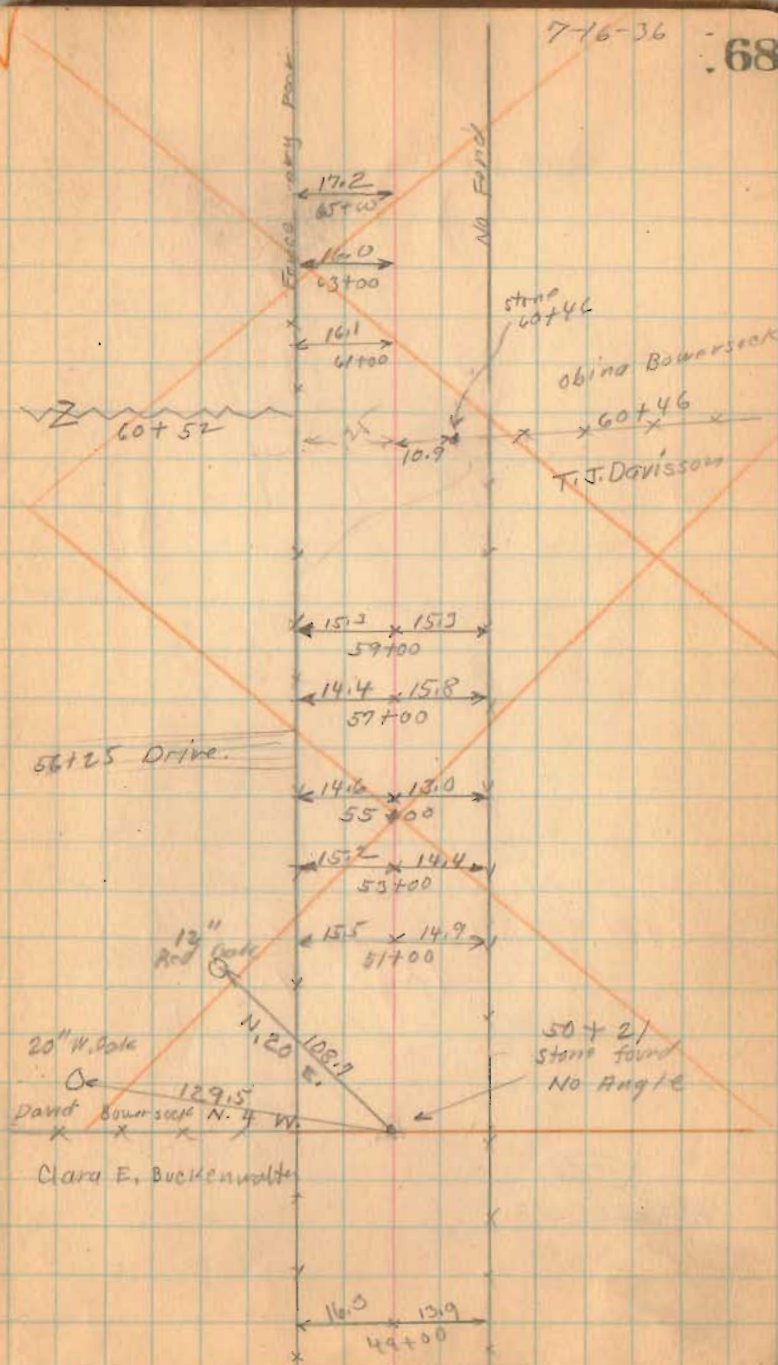


1726

INDEXED ON MAP

7-16-36

68

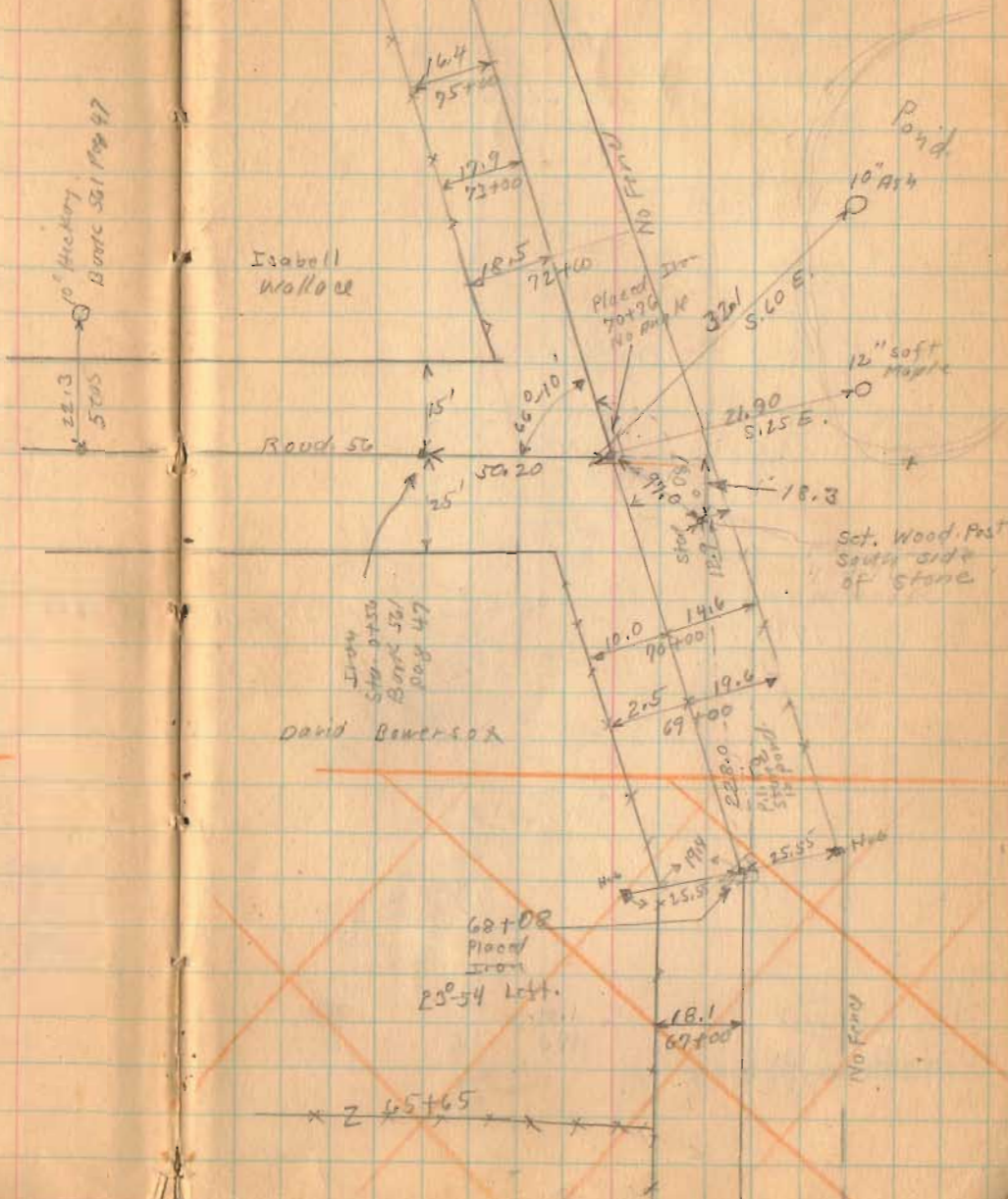


Road 57

For New &
Sta. 50+21 To 68+25
See Page 76

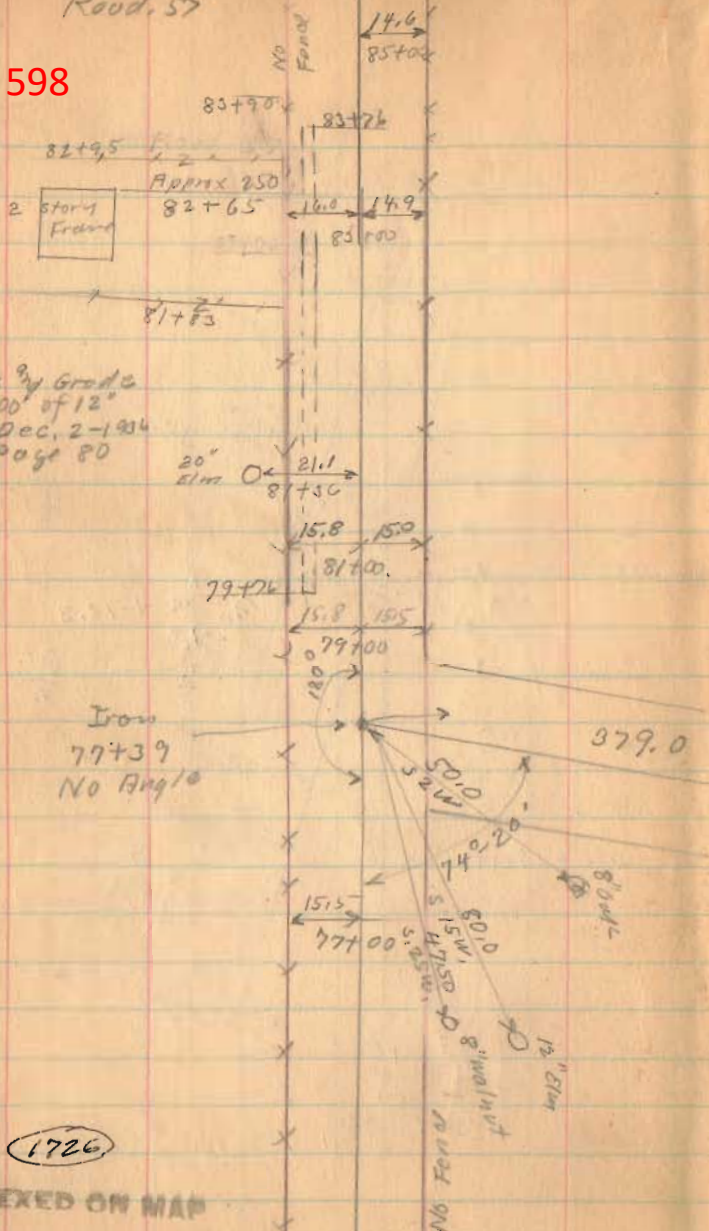
1726

INDEXED ON MAP



FB 598

Road 57



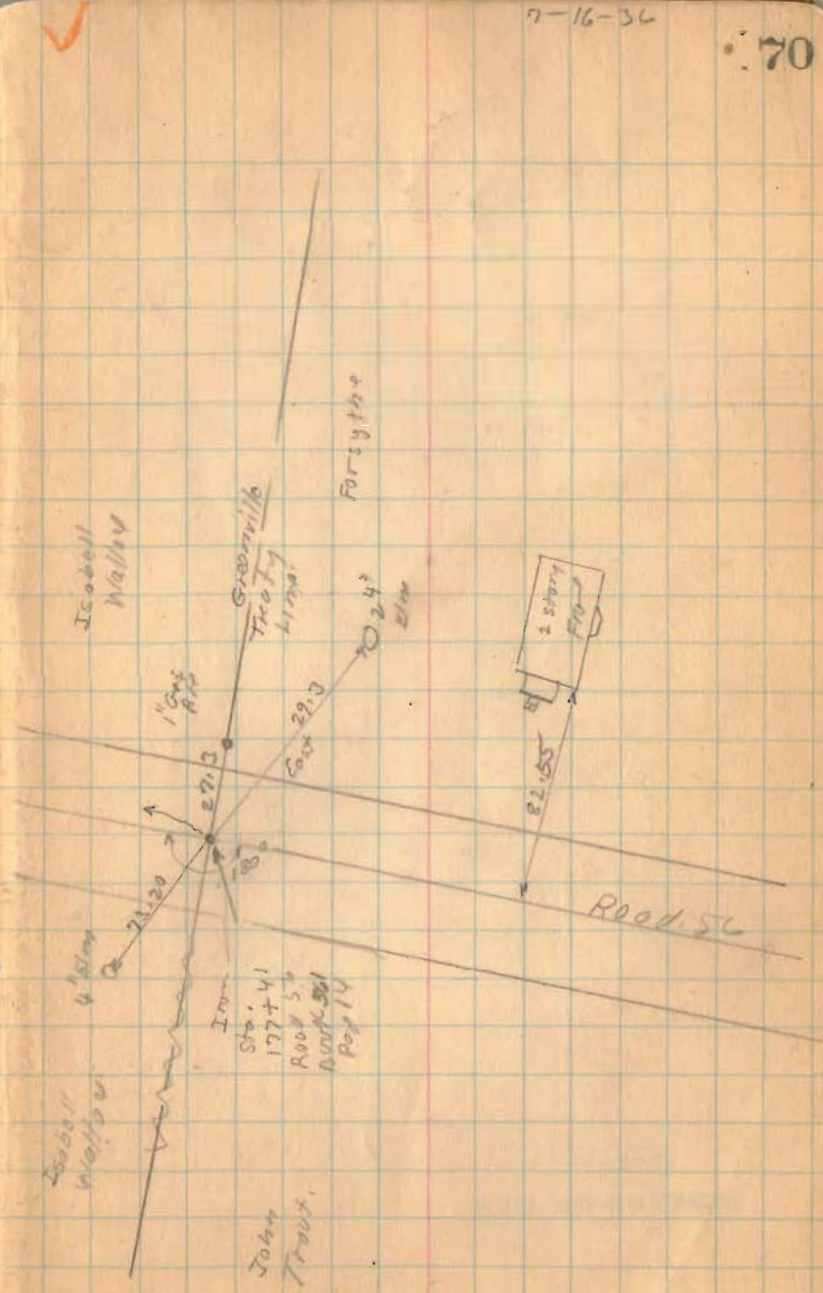
Stakes by Grade
for 400' of 12"
Tie Dec. 2-1934
See Page 80

1726

INDEXED ON MAP

7-16-36

70



John Trout

FB 598

Road 57

(1726)

INDEXED ON MAP

71

July 17 1936

Map

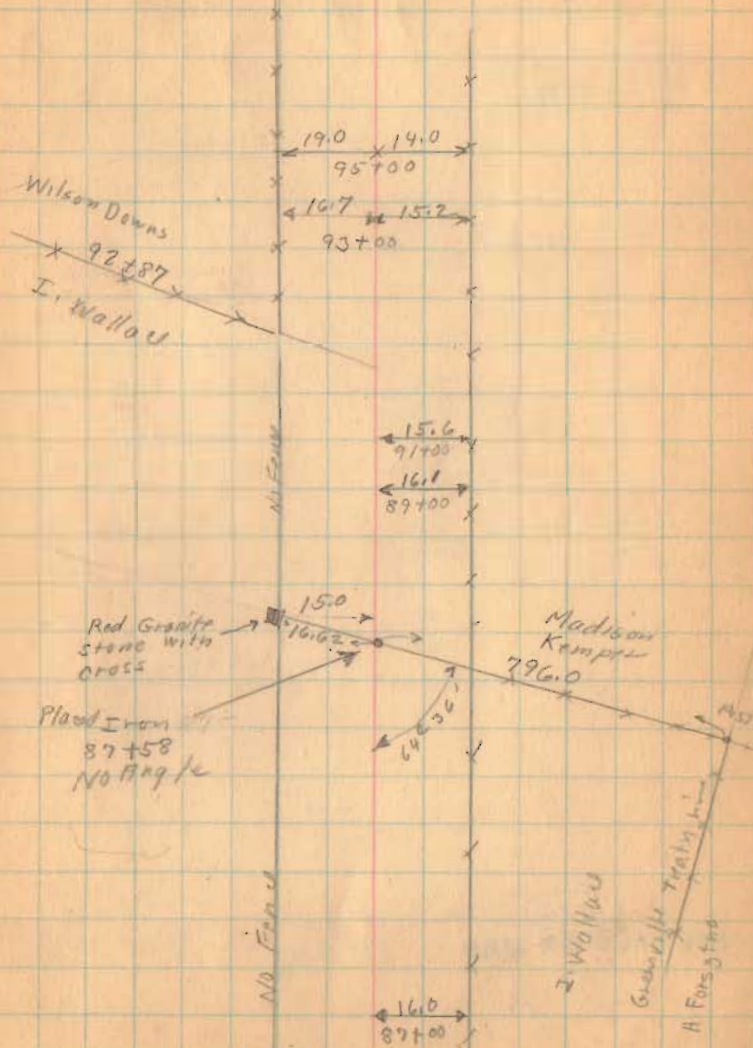
F. Wright

J. Montgomery

G. Wilgus

Max James

Joe Roberts



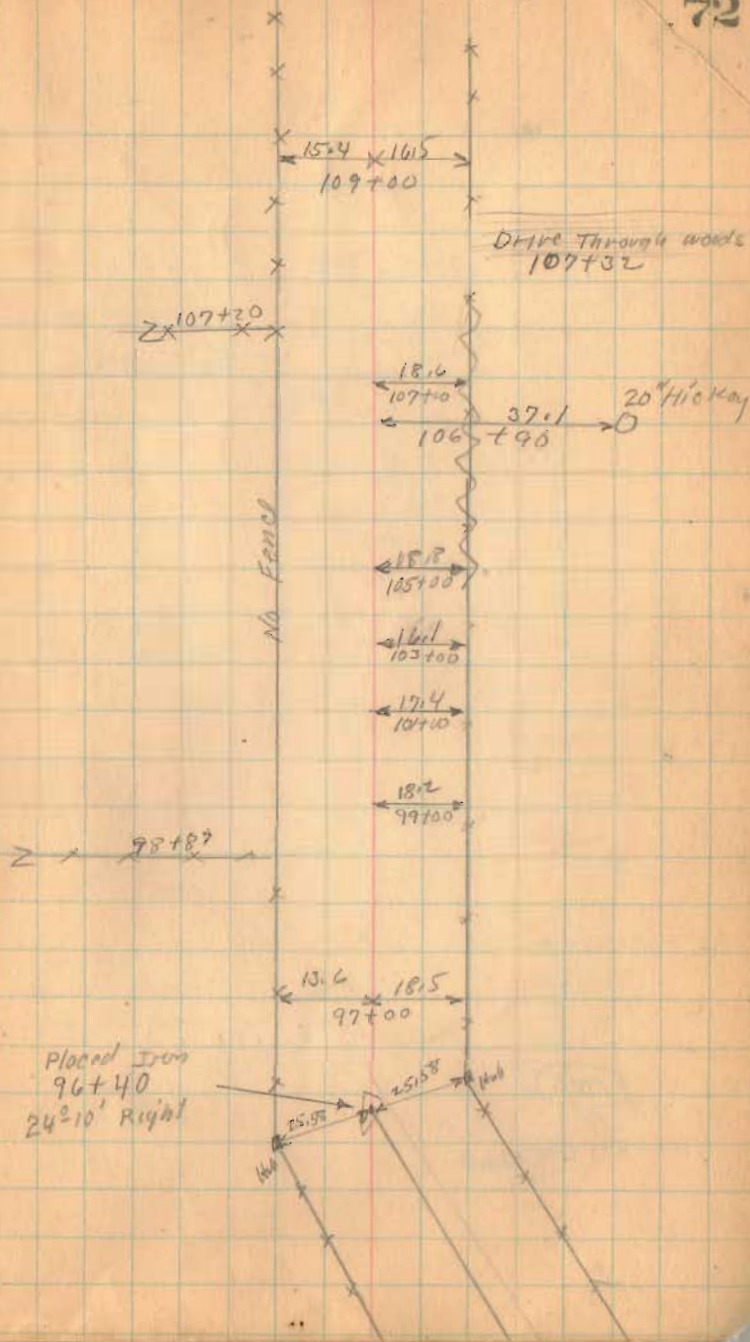
FB 598

Band 157

(1726)
INDEXED ON MAP

7-17-36

72



FB 598

Flood 57

113+14
110+75
2+39
1 25
1 12

olive Allebaugh

x 113+14

Wilson Downs

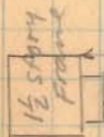
14.4 16.5
119+00

13.8 18.7
119+00

12.8 20.5
115+00

14.0 21.4
113+00

Placed Iron
113+14
1220' Right



154.7
111+71

17.9
116+00

110+98

110+75
Stone found
No Angle

A.W. Miller

x 119+75

Madison Kemper

61.30
S.5W 30" W. Cor

6" Sugar

59.85
N 49° 15'

58.15
S.5W

30" Red
Sole

7-17-36

73

1726

INDEXED ON MAP

FB 598

Road 57

No stakes placed
Sta 135+08 to Sta 167+47

1726

INDEXED ON MAP

7-17-36

74

W.M. Mitchell

Road 49
Patterson Pike

Placed Hub
135+08

Oliver Allebaugh

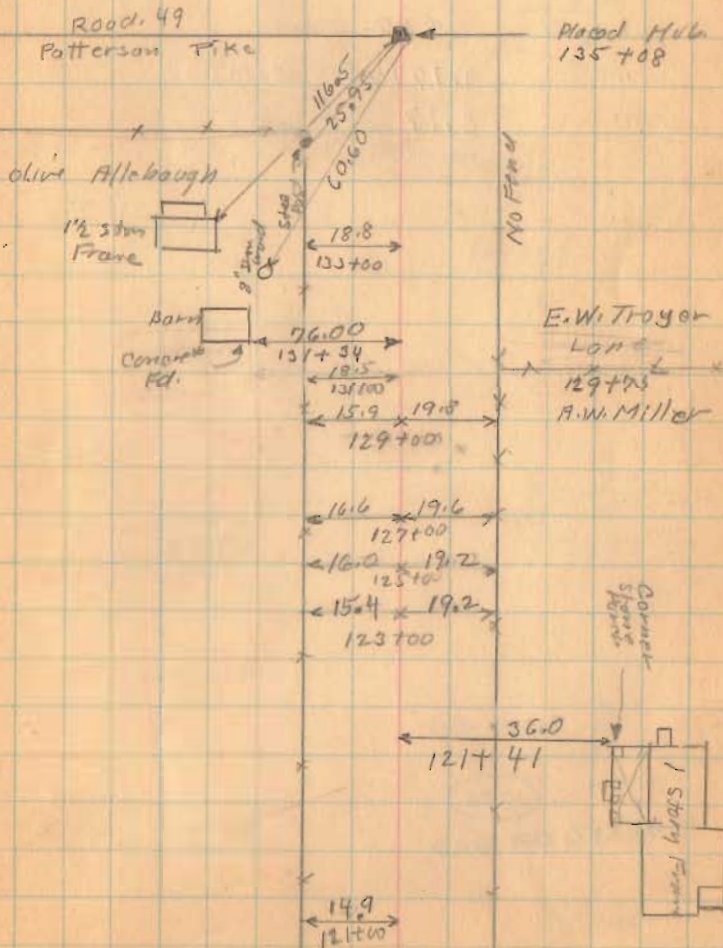
1/2 story
Frame

Barn
Concrete
Ftd.

E.W. Troyer
LON
129+03
A.W. Miller

Concrete
Steps

1 Story
Frame



FB 598

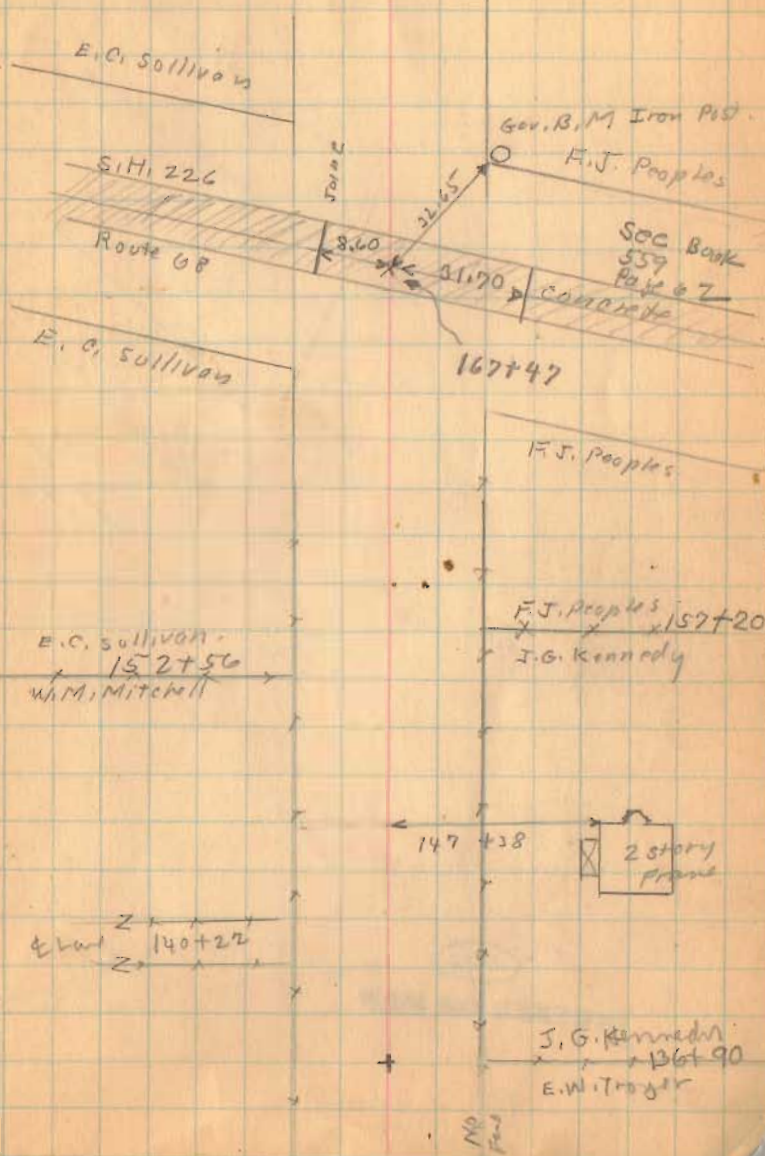
Road 57

Length 16,747 Feet
 " 3.17177 Miles
 " 3.17 "

1726
 INDEXED ON MAP

7-17-36

75



FB 598

Road 57

Road 56

✓
Drawn Page 69
Sum of 70+76
Old Sta 70+76
New Sta 70+73.5

Sept. 12-1936
cloudy
E. Wright
& Wilgr.
Max James,
Joe Roberts,

76

178.3
97.0
200.5
Stone Band

15
57.2
25
25.5
19.0
25.5

Iron
(Pl. Page 69)

Plat Iron
22°-28 left
68+25

MARK 2
MARK 2
MARK 2

Stone
60+46
2°02 left

57.1
N. 62 W.
100
W. 100

Oblio Bore
T.W. Dams
5/16
6" oak

50+21
Stone
0°-36 Right

1726

INDEXED ON MAP

FB 713

Intersection E U.S.R. 48 w/ C.R. 57
McArthur & Lake Twp.
Logan Co., Ohio

167+44.23 (Back) C.R. 57
0+00 (Ahead) T.R. 57
1°-05'-53" Rt.

E.C.R. 577

E.T.R. 577

U.S.R. 487

57+19.29 U.S.R. 48

E.C.R. 497

E.C.R. 577
N. 84°-29'-22" E.

Fd. R.R.
Spike

P.I.
135+08
Fd. 3/4" I.D. pipe
F.B.K. # 598, pg. 7A
start of this survey

INDEXED ON MAP
1726

B. Simmonds
G. Dappert
C. Dill

July 2014

50

McArthur Twp.

Fd. Mon. → 0
39.82' Lt.
82+97.42

29.94' 29.94'
82+97.34

Split Mon. S.
① 83+00
L-18

Fd. Mon. → 0
30.63' Lt.
71+98.36
(12+00)

Fd. Mon. → 0
29.99' Lt.
45+98.79
(46+00)

(Fd. Mon. S.)
29.95' Rt.
45+98.88

E U.S.R. 487
N 15°-11'-24" E.

0 - Set mag nail
8.57' Lt.
146+50.81
(T.V. pt.)

110°-52'-02"

70°-13'-51"

P.O.T.
167+01.42
Set R.R. Spike

P.O.T.
0+42.51
Set R.R. Spike

109°-46'-09"

Fd. Mon. S.
29.42' Rt.
52+99.59
(53+00)

Lake Twp.

29.93' 29.93'

Split Mon. S.
① 48+00
L-18