

Jos Stevenson Surv.

Reg. a - iron pin at N 7 1/2 to Jos Stevenson farm in cut belly & N pike from which the middle of East Stone wall to cut at top Bears N 13 E & links thence with cut pike S 13 W 9-25 = 19 poles

S 13 W 19.

Grantors are J. L. 2d George Kerr consideration

Line B - f cut pike S 80 3/4 E 6p - 30l = 13.2 poles to stake 8" end of cut of fence post

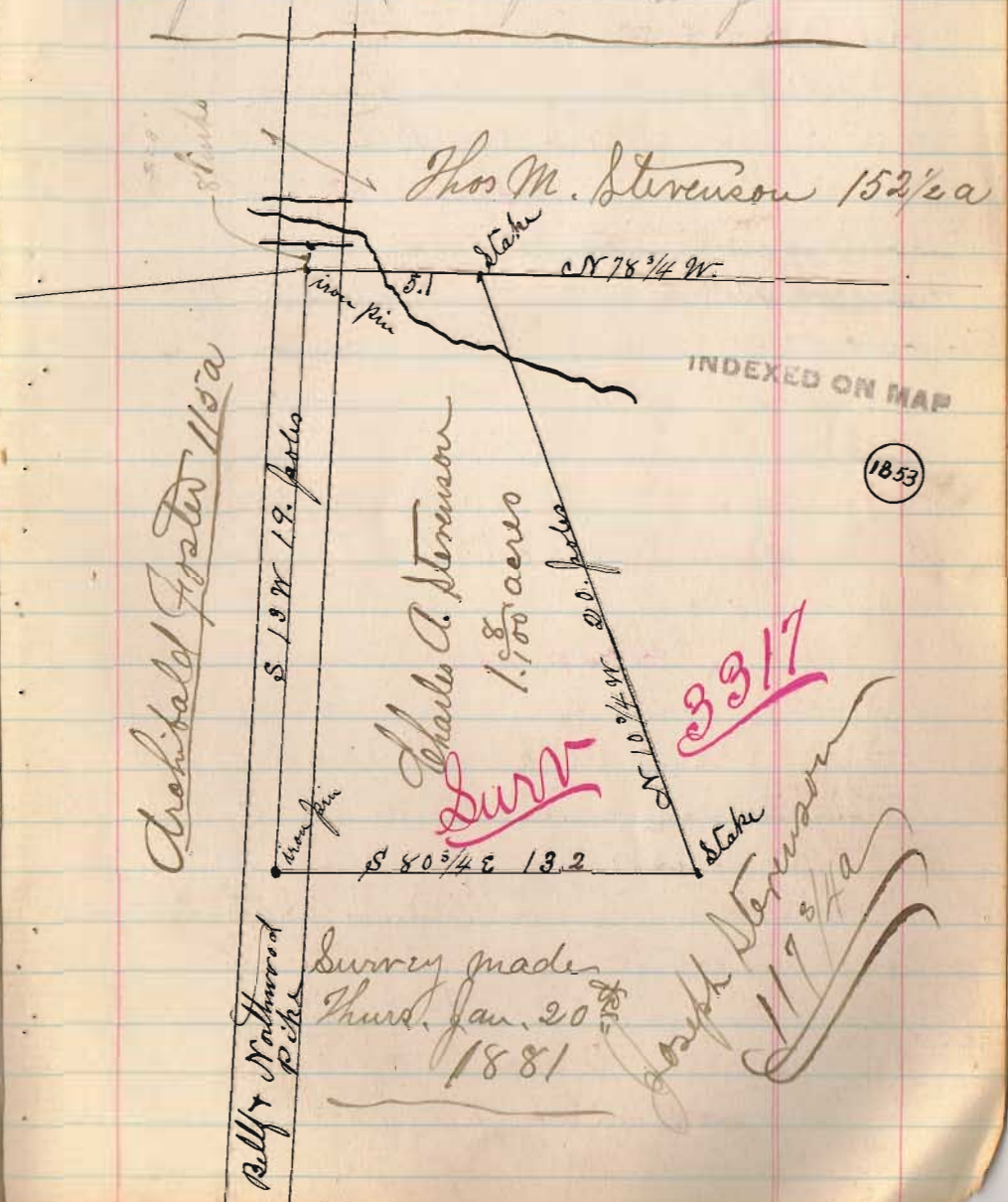
S 80 3/4 E 13.2

Line C - N 10 3/4 W cross creek at 15 poles 10p - 2 = 20.05 to post stake on line post & J M Stevenson.

N 10 3/4 W 20.

Plat Jos. Stevenson Surv.

S. d. to a N 78 3/4 W 2p - 30 - 3.2 poles to big



Survey made Thurs. Jan. 20 1881

Joseph Stevenson 117 3/4 a 3317