

FB 694

Survey of C.H. #181
at C.H. #1

CH #181 - 40' wide

CH #1 - 60' wide

Cutoff acquired 1913 - 33' wide
N. of RR fence

Note:-

See FB 49 pg 42

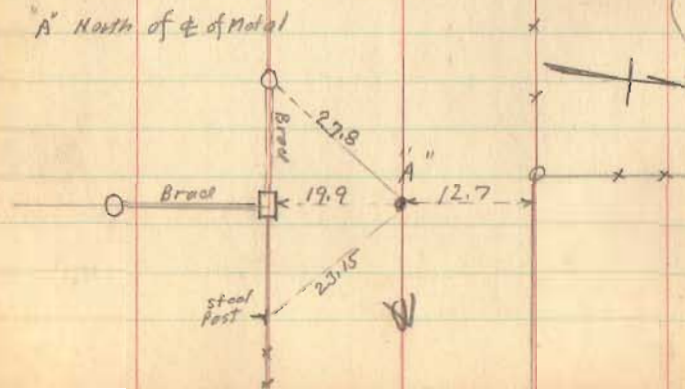
FB 598 pg 25 (CH #1)

FB 584 pg 35-36

Stone "A" Found June 16, 1956
New Witnesses

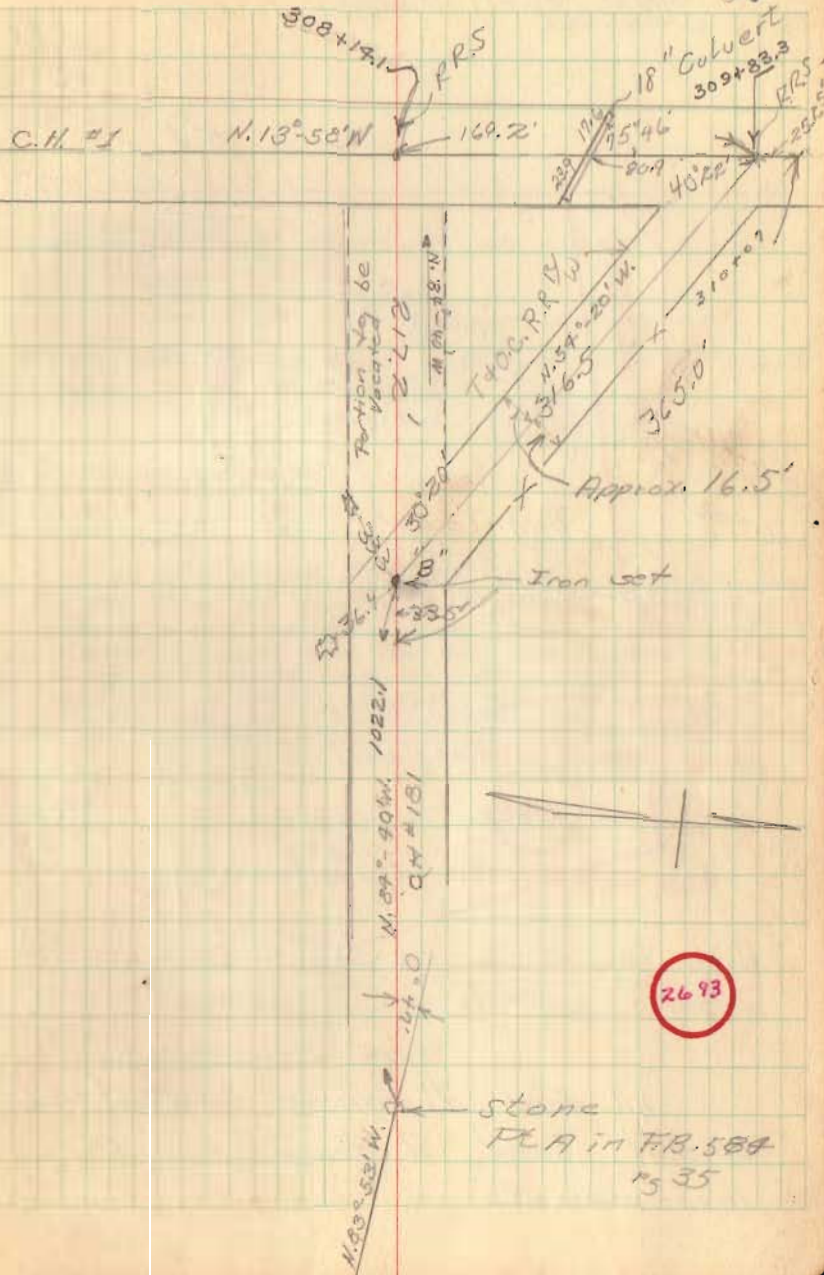
Placed Pipe over Stone
F.F. Wright
G.W. Wilges

"A" North of $\frac{1}{4}$ of Notal



O. Shirk
Aug 8, 51

57



2693

Stone
PLA in FB. 584
pg 35