

Lee Surveying and Mapping Co.



Farm Surveys • Lot Surveys • Topography • Subdivisions • Construction Layout

855 EAST SANDUSKY AVENUE
BELLEFONTAINE, OHIO 43311

(513) 593-5780

CLAYTON M. LEE, P.S.
JEFFREY I. LEE, P.S.

KENNEDY - CAMPBELL TO CAMPBELL 0.422 ACRE

Lying in V.M.S. 3683, Lake and Jefferson Townships, Logan County, Ohio.

Being the west part of that 0.88 acre tract deeded and described in O.R. Volume 10, Page 185 of the Logan County Records of Deeds and being more particularly described as follows:

Beginning at a 'PK' nail set on the center-line of State Route 540, marking the northwest corner of said 0.88 acre tract and also being the northeast corner of the grantee's (Campbell) land (Volume 164, Page 501).

THENCE, with the said center-line of State Route 540, N 62°-13' E, a distance of 52.50 feet to a 'PK' nail.

THENCE, through the center of said 0.88 acre tract, S 27°-47'-16" E, a distance of 365.94 feet to a 5/8" iron rod on the south line of said 0.88 acre tract.

THENCE, with said south line, N 89°-39' W, a distance of 59.50 feet to the southwest corner of said 0.88 acre tract.

THENCE, with grantee's present east line (Volume 164, Page 501), N 27°-47' W, a distance of 338.0 feet to the point of beginning.

Containing 0.422 acre, of which 0.417 acre is in Lake Township and 0.005 acre is in Jefferson Township.

Prepared by:

Clayton M. Lee
Professional Surveyor No. 6181
December 13, 1985

This description prepared from an actual field survey.



ORIGINAL STAMP IN GREEN

INDEXED ON MAP
2896 1D1

Lee Surveying and Mapping Co.



Farm Surveys • Lot Surveys • Topography • Subdivisions • Construction Layout

855 EAST SANDUSKY AVENUE
BELLEFONTAINE, OHIO 43311

(513) 593-5780

CLAYTON M. LEE, P.S.
JEFFREY I. LEE, P.S.

KENNEDY - CAMPBELL TO KENNEDY - 0.458 ACRES

Lying in V.M.S. 3683, Lake and Jefferson Townships, Logan County, Ohio.

Being the east part of that 0.88 acre tract deeded and described in O.R. Volume 10, Page 185 of the Logan County Records of Deeds and being more particularly described as follows:

Beginning at a 3" iron post at the southwest corner of said 0.88 acre tract, the same being the southwest corner of grantee's (Kennedy) 1.32 acre tract (Volume 404, Page 127).

THENCE, with the south line of said 0.88 acre tract, N 89°39' W, a distance of 59.50 feet to a 5/8" iron rod.

THENCE, through the center of said lot, N 27°-47'-16" W, a distance of 365.94 feet to a 'PK' nail set on the center-line of State Route 540.

THENCE, with said center-line, N 62°-13' E, a distance of 52.50 feet to a 'PK' nail set the the northwest corner of the grantee's said 1.32 acres.

THENCE, with the west line of said 1.32 acres, S 27°-47' E, a distance of 394.0 feet to the point of beginning.

Containing 0.458 acre, of which 0.363 acre is in Lake Township and 0.095 acre is in Jefferson Township.

Prepared by:

Clayton M. Lee

Clayton M. Lee

Professional Surveyor No. 6181

December 13, 1985

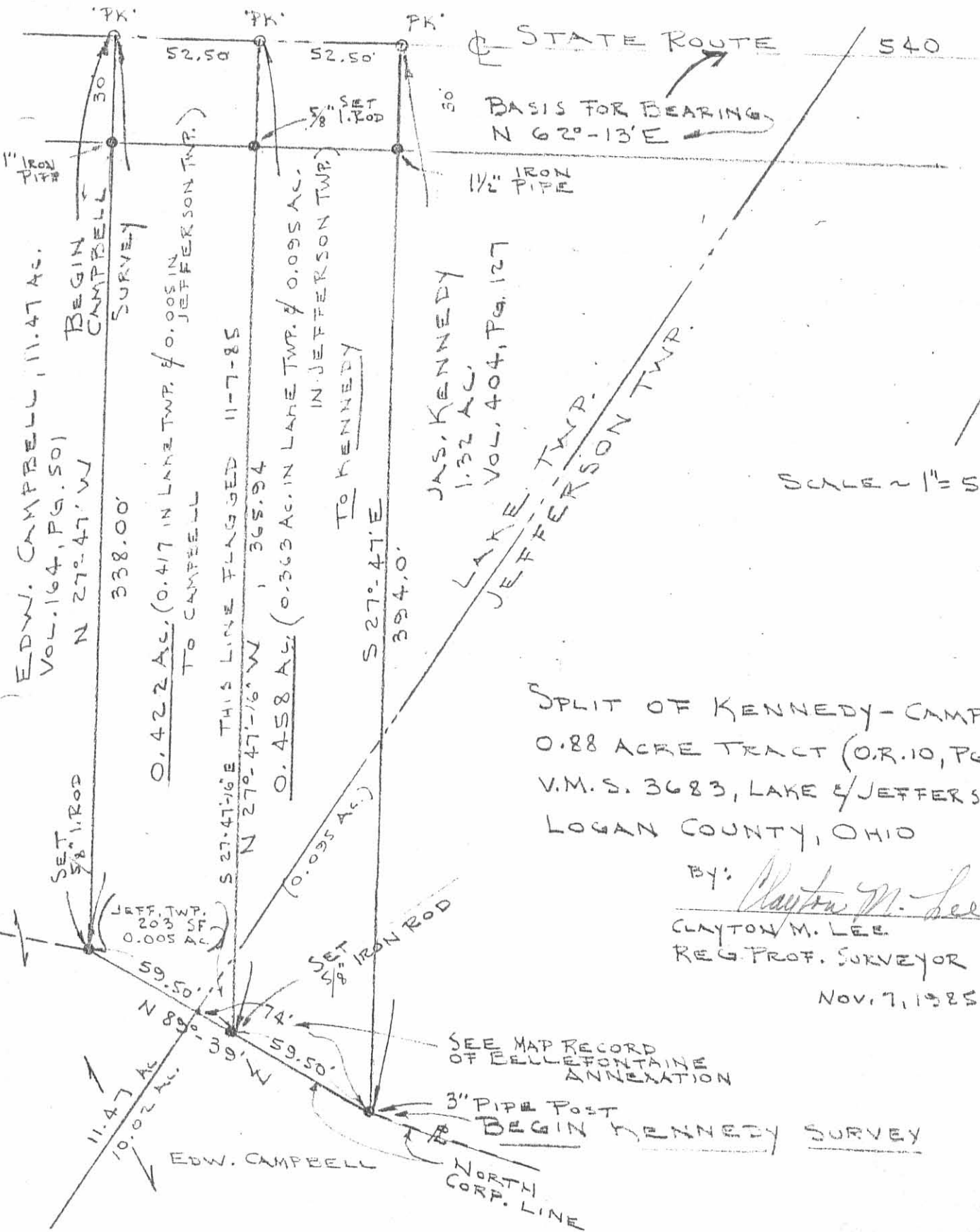
This description prepared from an actual field survey.



ORIGINAL STAMP IN GREEN

INDEXED ON MAP
2896 1D-2

L-1348



INDEXED ON MAP
2896 1P

Campbell - Kennedy Survey

Lake Township

May 1952

1.32 Acres

The following described land in Lake Township, Logan County Ohio, and being in V.M.S. 3683

Beginning at a point in the center of State Highway Number 235 (U.S. Route Number 33) known as the Bellefontaine Marysville Road and being station 19 plus 55 of said Road as shown on Logan County Engineer's Plan M - 42 page 4 thence with the center of said State Highway Number 235 N. 62° - $13'$ E. 177.4 feet thence S. 17° - $15'$ E. 439.4 feet to a steel fence post the last described line passing an iron pipe at the south side of the State Highway at 40.7 feet (being 40.0 feet from the center line when measured at right angles) thence with the present fence line S. 83° - $36'$ W. 105.0 feet to a one inch iron thence N. 27° - $47'$ W. 394.0 feet to the place of beginning the last described line passing an iron pipe at the south side of the State Highway at 354.0 feet said tract containing 1.32 acres.

cc
E.K.Core,
Logan County Engineer

2899

2D