

HOLLEY SURVEY
V. M. S. 3322
LAKE TOWNSHIP

July 17, 1959

The following described real estate situated in Lake Township, Logan County, Ohio and being part of Virginia Military Survey 3322 and more particularly described as follows:

Beginning at an iron pin in the center of County Highway No. 219 at the southeast corner of Hare Homes Inc. 81.25 acre tract; thence with the center of said County Highway No. 219 N. $85^{\circ}-15'$ E. 150.0 feet to an iron pin; thence N. $4^{\circ}-06'$ W. 350.0 feet to an iron pin; thence S. $85^{\circ}-15'$ W. 150.0 feet to an iron pin in the east line of said Hare Homes Inc. 81.25 acre tract; thence with said east line S. $4^{\circ}-06'$ E. 350.0 feet to the place of beginning.

Containing 1.20 acres more or less.

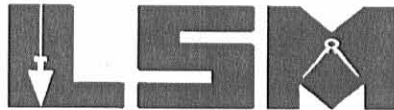
The above described tract being part of Bernice L. Stover's 36.93 acre tract.

2957 ID

Rec 10-24-05 OK
Lee Surveying and Mapping Co., Inc.

Land Surveys • Topography • Subdivisions • Construction Layout

117 N. Madriver St.
Bellefontaine OH 43311



Phone: (937) 593-7335
Fax: (937) 593-7444

1975-2005 - 30 YEARS OF EXCELLENCE

**HOLLEY, ETAL
5.500 ACRES**

Lying in Virginia Military Survey 3322, Lake Township, Logan County, Ohio.

Being out of the Lora Alma Holley, Milton S. Stover, Rosalie H. Stover and Bruce E. Stover 35.73 acre tract as deeded and described in Official Record 771, Page 601 of the Logan County Records of Deeds and being more particularly described as follows:

Beginning at a railroad spike found at the southwest corner of Virginia Military Survey 3322 on the center-line of Township Road 219.

THENCE, with the south line of Virginia Military Survey 3322 and the center-line of Township Road 219 (40 feet wide), the following two courses:

N 86°-48'-00"E, a distance of 2013.94 feet to a MAG nail found.

N 86°-25'-00"E, a distance of 280.02 feet to a 1/2 inch square iron bar found at the TRUE POINT OF BEGINNING.

THENCE, with the east line of the Herbert D. Holley 1.20 acre tract (Vol. 267, Pg. 193), N 3°-02'-17"W, a distance of 349.28 feet to a 5/8 inch iron rod set, passing a 5/8 inch iron rod set at 20.00 feet.

THENCE, N 86°-25'-00"E, a distance of 686.00 feet to a 5/8 inch iron rod set.

THENCE, S 3°-02'-17"E, a distance of 349.28 feet to a railroad spike set on the south line of Virginia Military Survey 3322 and the center-line of Township Road 219, passing a 5/8 inch iron rod set at 329.28 feet.

THENCE, with the south line of Virginia Military Survey 3322 and the center-line of Township Road 219, S 86°-25'-00"W, a distance of 686.00 feet to the point of beginning.

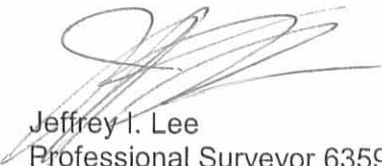
Containing 5.500 acres, of which 0.315 acre is within the highway right-of-way.

The basis for bearings is the south line of Virginia Military Survey 3322, being S 86°-25'-00"W, and all other bearings are from angles and distances measured in a field survey by Lee Surveying and Mapping Co., Inc. on October 19, 2005.

Description prepared by:



ORIGINAL STAMP IN GREEN

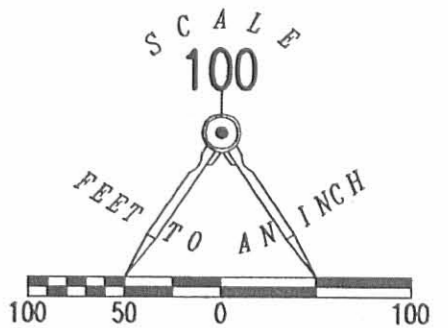

Jeffrey I. Lee
Professional Surveyor 6359
October 19, 2005

L-4141

INDEXED ON MAP
2957 2D

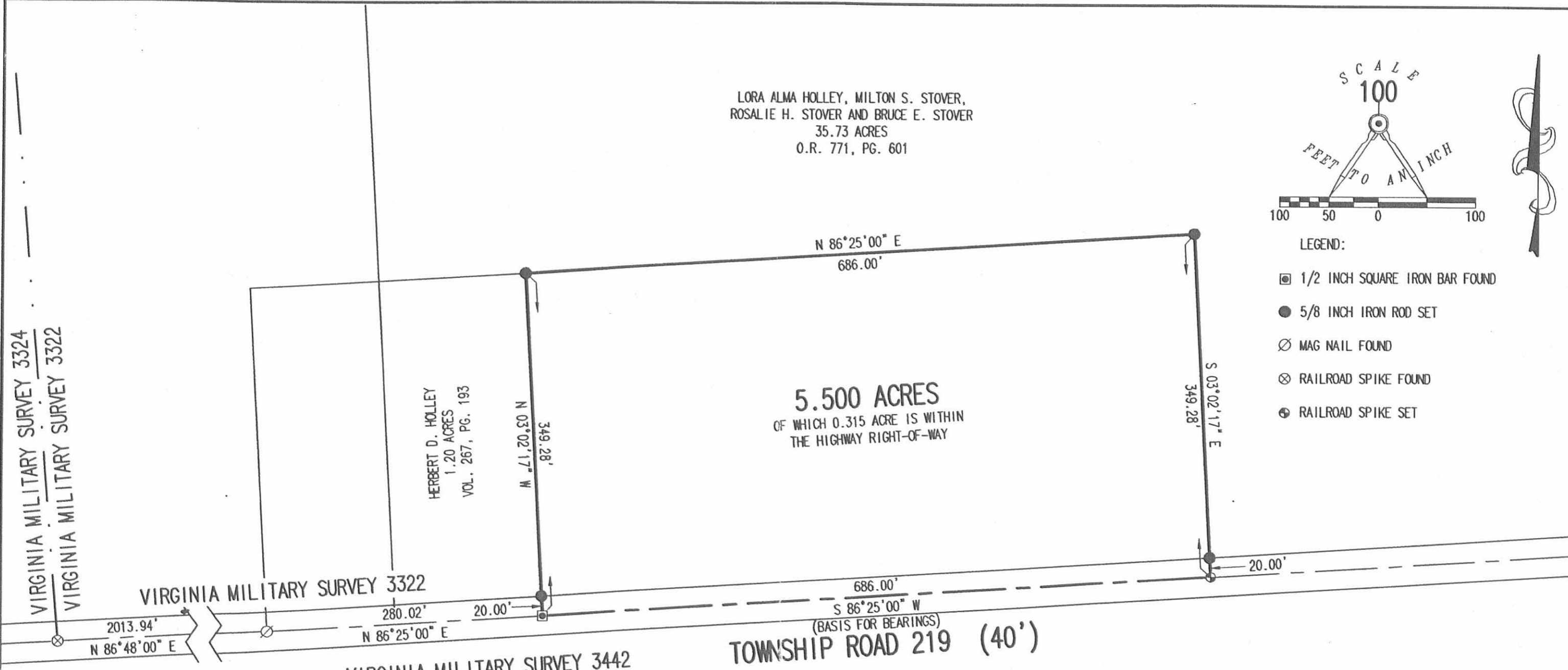
Recd 10-24-05 OK JLB

LORA ALMA HOLLEY, MILTON S. STOVER,
ROSALIE H. STOVER AND BRUCE E. STOVER
35.73 ACRES
O.R. 771, PG. 601



LEGEND:

- 1/2 INCH SQUARE IRON BAR FOUND
- 5/8 INCH IRON ROD SET
- ⊗ MAG NAIL FOUND
- ⊗ RAILROAD SPIKE FOUND
- ⊕ RAILROAD SPIKE SET



5.500 ACRES
OF WHICH 0.315 ACRE IS WITHIN
THE HIGHWAY RIGHT-OF-WAY

HERBERT D. HOLLEY
1.20 ACRES
VOL. 267, PG. 193

VIRGINIA MILITARY SURVEY 3324
VIRGINIA MILITARY SURVEY 3322

VIRGINIA MILITARY SURVEY 3322

VIRGINIA MILITARY SURVEY 3442

TOWNSHIP ROAD 219 (40')

SURVEY OF 5.500 ACRES OUT OF THE
LORA ALMA HOLLEY, MILTON S. STOVER,
ROSALIE H. STOVER AND BRUCE E. STOVER
35.73 ACRE TRACT
OFFICIAL RECORD 771, PAGE 601
VIRGINIA MILITARY SURVEY 3322
LAKE TOWNSHIP
LOGAN COUNTY, OHIO



ORIGINAL STAMP IN GREEN

SURVEYED BY:

Jeffrey I. Lee
JEFFREY I. LEE
PROFESSIONAL SURVEYOR 6359
OCTOBER 19, 2005

COPYRIGHT 2005 BY:
LEE SURVEYING & MAPPING CO., INC.
117 North Madriver Street
BELLEFONTAINE, OHIO 43311
(937) 593-7335

KSR/ADW D1005 4141105 L-4141-3

2 WORKING DAYS
BEFORE YOU DIG
CALL TOLL FREE 800-362-2764
OHIO UTILITIES PROTECTION SERVICE

INDEXED ON MAP
2957 2P

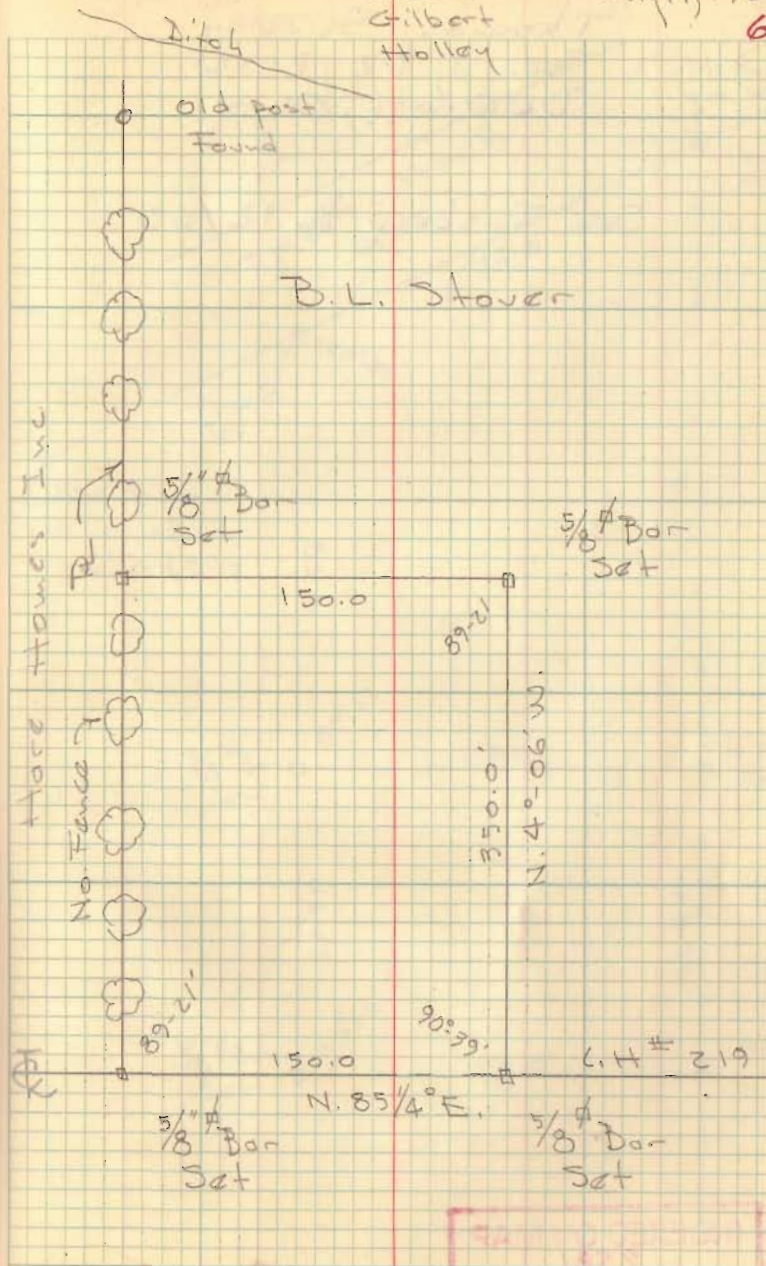
Holley Survey
v.m.s. 3322
Lake Twp.

Used line of trees as PL
between Horse Homes & Stover

INDEXED ON MAP
2957

Dodson
Gilbert
Holley

July 17, 1959
60



INDEXED ON MAP
2957