

MARQUIS TO FITZPATRICK DESCRIPTION
(Sept., 1963)

Being situated in Lake Township, Logan County, Ohio, and being a part of V.M.S. #5045.

Beginning at a stone where the south line of Lake Township intersects the Ludlow Road (County Highway #1). Thence with the center of the Ludlow Road N13°-55'W 785.0 feet to the northwest corner of a 1.30 acre tract. Said point is the place of beginning for this description.

Thence continuing with the center of Ludlow Road N13°-55'W 294.0 feet to an iron at the southwest corner of Warner's 12.83 acre tract.

Thence with the south line of Warner's 12.83 acre tract S86°-51'E 746.5 feet to a post in the east line of V.M.S. #5045.

Thence with the east line of V.M.S. #5045 S3°-55'W 533.7 feet to a corner post at the Fitzpatrick's northeast corner.

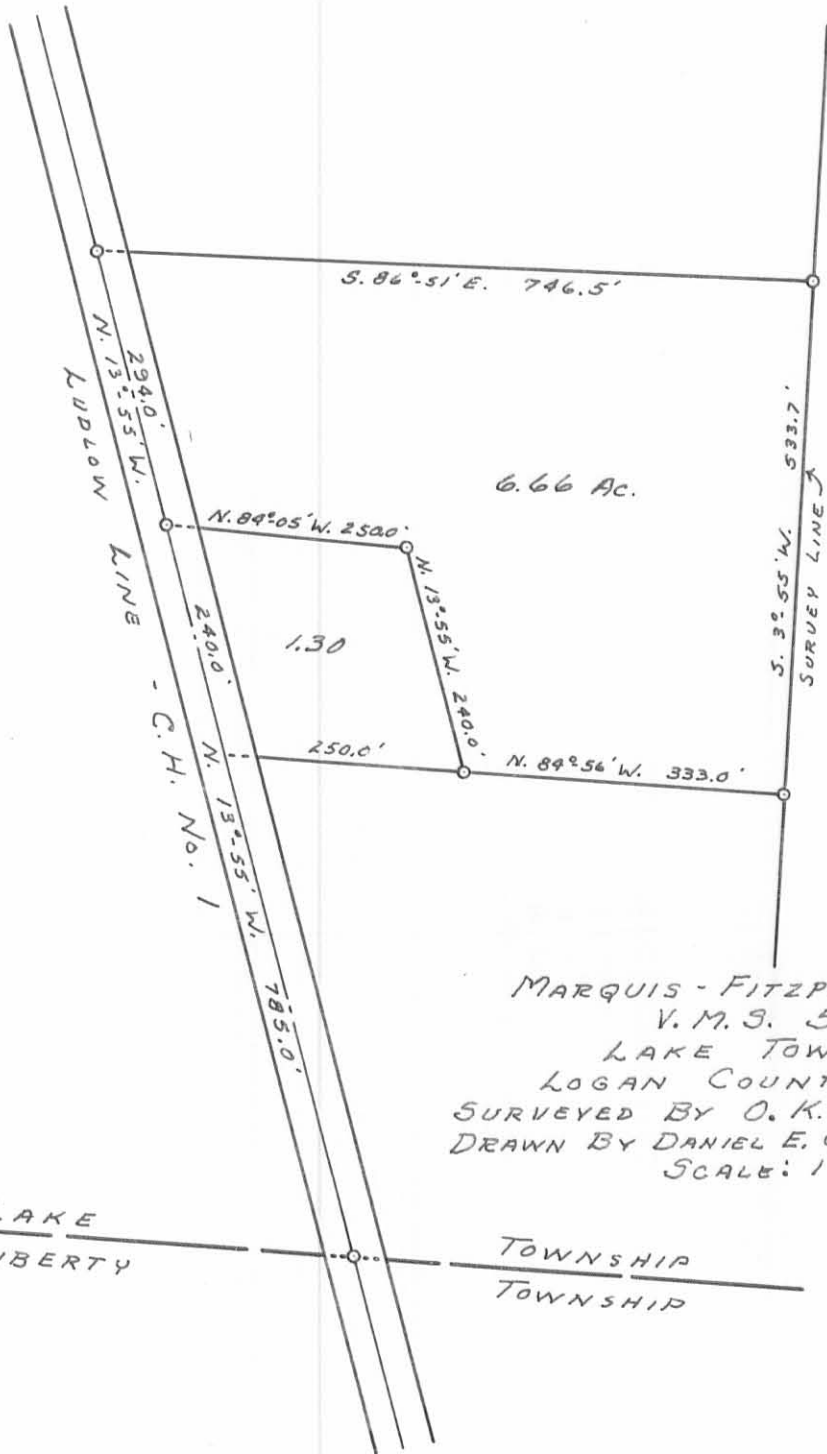
Thence with Fitzpatrick's north line N84°-56'W 333.0 feet to an iron.

Thence N13°-55'^W 240.0 feet to an iron.

Thence N84°-05'W 250.0 feet to the place of beginning.
Containing 6.66 acres more or less.

Owen K. Shirk
Surveyor #4271

10
3582



MARQUIS - FITZPATRICK SURVEY
 V. M. S. 5045
 LAKE TOWNSHIP
 LOGAN COUNTY, OHIO
 SURVEYED BY O. K. SHIRK - SEPT. 1963
 DRAWN BY DANIEL E. GILBERT - SEPT. 23, 1963
 SCALE: 1" = 200'

LAKE LIBERTY TOWNSHIP TOWNSHIP

IP
 3582

INDEXED ON MAP