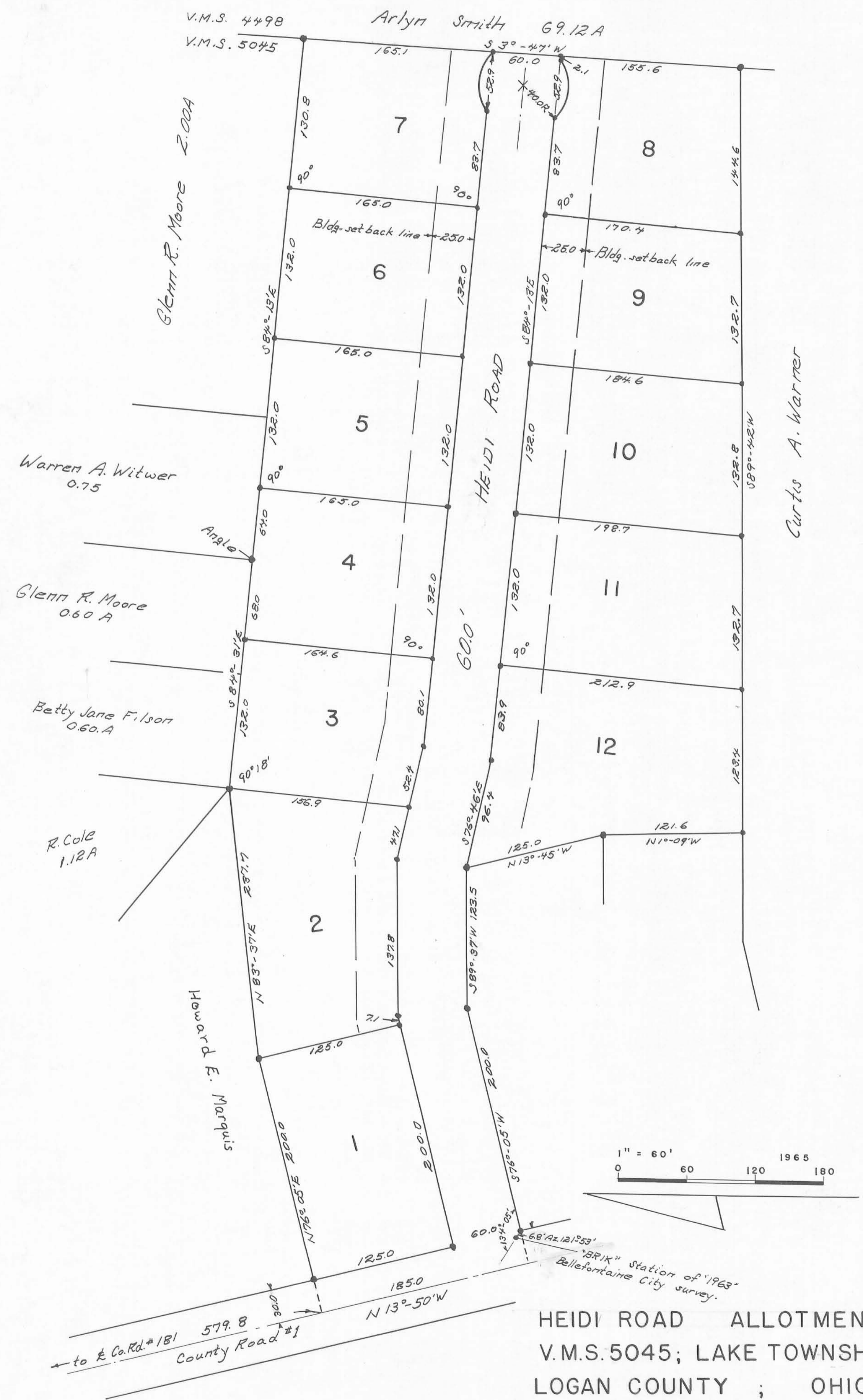


Note: This Tracing To Be Filed In Logan County Engineers Office



**SURVEYOR'S CERTIFICATE**

The accompanying plat represents a Subdivision of land in V.M.S. 5045, Lake Township, Logan County, Ohio. The tract has a area of 6.75 acres in lots and 1.56 acres in streets to the of County Road #1, making a total of 8.31 acres. Iron bars were placed at all lot corners as indicated by \*. All measurements are in feet and tenths of a foot. I hereby certify the accompanying plat is a correct representation of HEIDI ROAD ALLOTMENT.

Curtis A. Warner  
Surveyor #271  
639 Hamilton St.  
Bellefontaine, Ohio

**APPROVAL**

Approved on the 13<sup>th</sup> day of April, 1965.  
Theresa W. Rensch, M.D.  
County Health Board

Tentative approval given by City Planning Commission, Bellefontaine, Ohio this date April 20, 1965 by:  
Charles H. DeLong  
Chairman Planning Comm.

Approved on the 12<sup>th</sup> day of April, 1965.  
Chester R. Kurzy  
County Engineer

Approved on the 12<sup>th</sup> day of April, 1965,  
Con. following Fanny C. Tussell William A. Fox  
County Commissioners

**DEDICATION**

Know all men by these present that the Humble Construction Co. proprietors of the land indicated on the accompanying plat have authorized the laying out of same as indicated in the accompanying plat. The streets are dedicated to the public.

Larry E. Blum Tracy H. Humble  
Witness Pres, West Liberty, O.  
Donna J. Latham Dorothy E. Humble  
Witness Treas., West Liberty, O.

**ACCEPTANCE**

Transferred on the 23<sup>rd</sup> day of April, 1965.  
Chas. H. Chamberlain  
County Auditor

Received for record at 2:45 O'clock P. M. on the 23<sup>rd</sup> day of April, 1965. Recorded in Plat Book H-D, page 114.

Ruth Rosen  
County Recorder

**NOTE:**

New roads to be private roads, to be maintained by the Grantors here in, until construction of said roads complies with the minimum requirements for County and Township roads established and determined by the Logan County Engineer.

Grantors: Humble Construction Company

The roads indicated on the above plat have been constructed in compliance with the minimum requirements for County and Township roads and are hereby approved.

Chester R. Kurzy, 9-21-1970  
County Engineer

**STATE OF OHIO; CO. OF LOGAN:SS**

Be it remembered that on the 9<sup>th</sup> day of April in the year of our Lord One Thousand Nine Hundred Sixty Five before me a Notary Public in and for said County, personally came Tracy H. Humble President; and Dorothy E. Humble Treasurer of the Humble Construction Co., grantors in the foregoing dedication who acknowledged the signing thereof to be their free and voluntary act and deed.

January 15, 1967 Nailyn Scott  
My Commission Expires Notary Public  
Logan County, Ohio

**HEIDI ROAD ALLOTMENT  
V.M.S. 5045; LAKE TOWNSHIP  
LOGAN COUNTY; OHIO**

Marquis to Humble Description

March, 1965

Being situated in Lake Township, Logan County, Ohio, and being a part of V.M.S. #5045.

Beginning at a point in the center of County Road #1 (Ludlow Road) that bears S 13° - 50°E 579.8 feet from the intersection of County Road #181 with County Road #1.

Thence N 76° - 05°E 230.0 feet to a iron passing thru a iron at 30.0 feet.

Thence N 83° - 37°E 237.7 feet to a iron at the south-west corner of R. Cole's 1.12 acre tract.

Thence with the south line of R. Cole's 1.12 acre tract S 84° - 31°E 200.0 feet to a iron.

Thence S 84° - 13°E 458.8 feet to a iron on the west line of Arlyn Smith's 69.12 acre tract.

Thence with the west line of Arlyn Smith's 69.12 acre tract S 3° - 47°W 380.7 feet to a iron at the northeast corner of Warner's 2.96 acre tract.

Thence with the east line of Warner's 2.96 acre tract S 89° - 42°W 667.7 feet to a iron.

Thence N 1° - 06°W 121.6 feet to a iron.

Thence N 13° - 40°W 125.0 feet to a iron.

Thence S 89° - 42°W 123.5 feet to a iron.

Thence S 76° - 05°W 230.0 feet to a iron in the center of County Road #1.

Thence with the center of County Road #1 N 13° - 50°W to the place of beginning.

Containing 8.31 acres more or less.

Owen K. Shirk  
Surveyor 4271

105.00'  
4033

REC'D 12-31-96 SWY OK ✓



# Lee Surveying and Mapping Co., Inc.



Farm Surveys • Lot Surveys • Topography • Subdivisions • Construction Layout

117 NORTH MADRIVER STREET  
BELLEFONTAINE, OHIO 43311

(937) 593-7335  
FAX (937) 593-7444

## ROADWAY VACATION DESCRIPTION

Lying in Virginia Military Survey 5045, Lake Township, Logan County, Ohio.

Being the east 70.00 feet of Heidi Road as dedicated on the "Heidi Road Allotment" as filed in Plat Cabinet A, Slide 425, and the "Revision and Extension to Heidi Road Allotment" as filed in Plat Cabinet A, Slide 521 of the Logan County Records of Plats and lying between Lot 7 and Lot 8 of the said subdivisions.

Description prepared from records by Jeffrey I. Lee, P.S., December 31, 1996.



INDEXED ON MAP  
4033 2D