

Lee Surveying and Mapping Co.



Farm Surveys • Lot Surveys • Topography • Subdivisions • Construction Layout

855 EAST SANDUSKY AVENUE
BELLEFONTAINE, OHIO 43311

(513) 593-5780

CLAYTON M. LEE, P.S.
JEFFREY I. LEE, P.S.

CHARLES CHAMBERLAIN SURVEY

Lying in V.M.S. 3683, Lake Township, Logan County, Ohio and being out of that 5.0 acre tract deeded and described in Volume 193, Page 467 of the Logan County Records of Deeds and more particularly described as follows:

Beginning at an iron spike set in the center-line of County Road No. 235, lying S 84°-21' W a distance of 40.00 feet from the southeast corner of said 5.0 acres and 78.44 feet from the center-line of State Route No. 540

THENCE, continuing with the center-line of County Highway 235, S 84°-21' W, a distance of 225.00 feet to an iron spike set N 84°-21' E, a distance of 25.0 feet from the southwest corner of said 5 acres.

THENCE, N 6°-05' W, a distance of 313.29 feet, to an iron rod. Passing an iron rod set in the road R/W at 30 feet.

THENCE, N 87°-54'-40" E, a distance of 92.41 feet to an iron rod set at the southwest corner of a maintenance area for a guy and anchor. (From radio tower to south).

THENCE, with the west line of said maintenance area, N 2°-05'-20" W, a distance of 39.00 feet to an iron rod.

THENCE, along the north side of maintenance area, N 87°-54'-40" E, a distance of 15.00 feet to an iron rod.

THENCE, along the east side of maintenance area, S 2°-05'-20" E, a distance of 39.00 feet to an iron rod set at the southeast corner of the maintenance area.

THENCE, leaving the maintenance area, N 87°-54'-40" E, a distance of 125.54 feet to an iron rod.

THENCE, S 4°-40' E, a distance of 298.86 feet, to the point of beginning. Passing an iron rod set in the north R/W line of County Road 235 at 268.86 feet. Containing 1.621 acres.

Previous deed reference: Volume 193, Page 467.

Surveyed by:

Clayton M. Lee
Clayton M. Lee
Reg. Surveyor No. 6181
9-25-77

INDEXED ON MAP

4083

ID

**SURVEY OF 1.621 ACRES
V.M.S. 3683
LAKE TOWNSHIP
LOGAN COUNTY, OHIO**

SURVEYED BY:

Clayton M. Lee

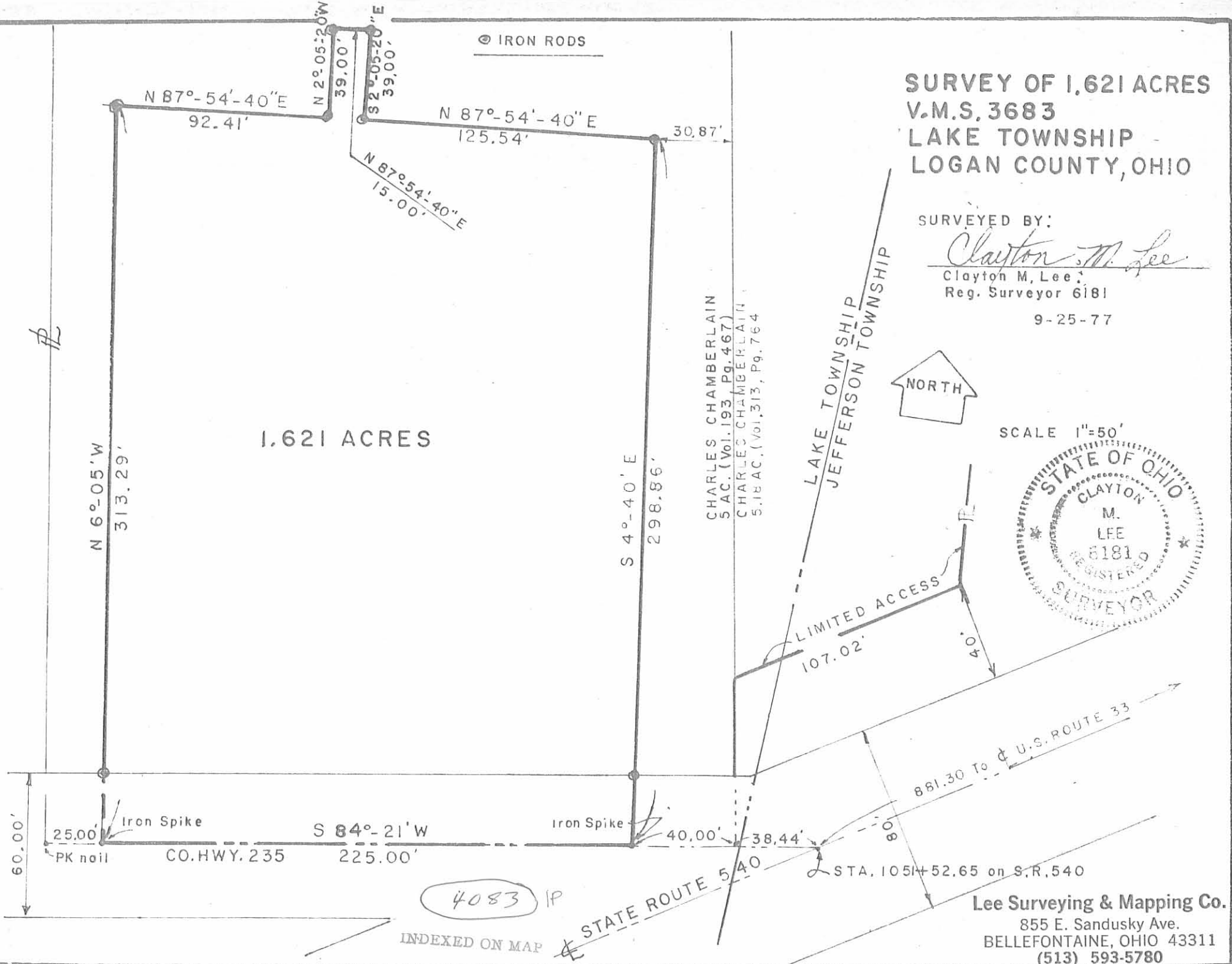
Clayton M. Lee
Reg. Surveyor 6181

9-25-77

1.621 ACRES



SCALE 1"=50'



4083 IP
INDEXED ON MAP

Lee Surveying & Mapping Co.
855 E. Sandusky Ave.
BELLEFONTAINE, OHIO 43311
(513) 593-5780