

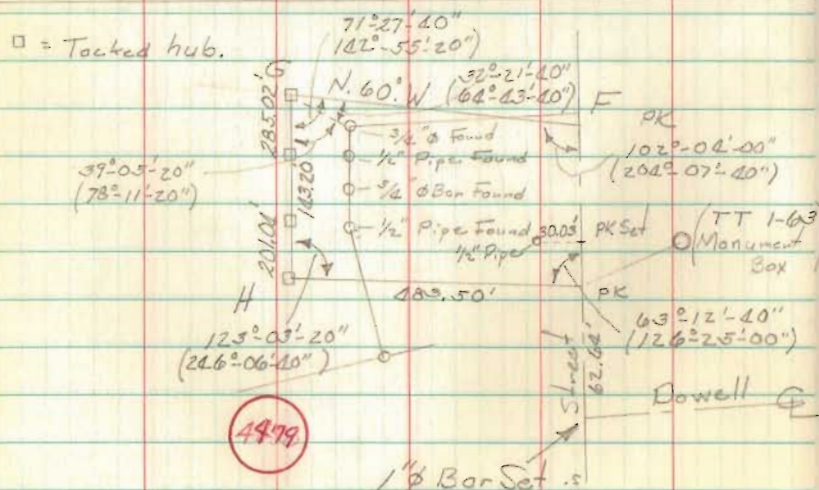
SURVEY OF
 CARL S. CRONE PROPERTY
 MARCH, 1969
 V.M.S. 2873
 LAKE TOWNSHIP
 LOGAN COUNTY, OHIO
 SCALE 1" = 100'

COUNTY
 4479
 INDEX NO.

SURVEYED AND DRAWN BY
 LESLIE H. GEESLIN
 REGISTERED SURVEYOR # 5248

Lake Township
 Survey - Industrial Growth Corp., Bellefontaine

- A - "X" on brick pavement, 4" beneath surface.
- B - 1" ϕ iron set in Monument Cover, ^{Set} 18 March 1969
- C - 1" ϕ iron set 18 March 1969, in monument cover.
- D - Found 1" ϕ iron in monument box. This point is intersection of Old Corporation Line and E Main.
- E - 1" ϕ set in monument box at intersection of Dowell and Main.
- F - PK nail.
- G - Tacked hub
- H - Tacked hub
- I - 1" ϕ iron set.
- J - 1" ϕ iron set.
- K - PK nail set.

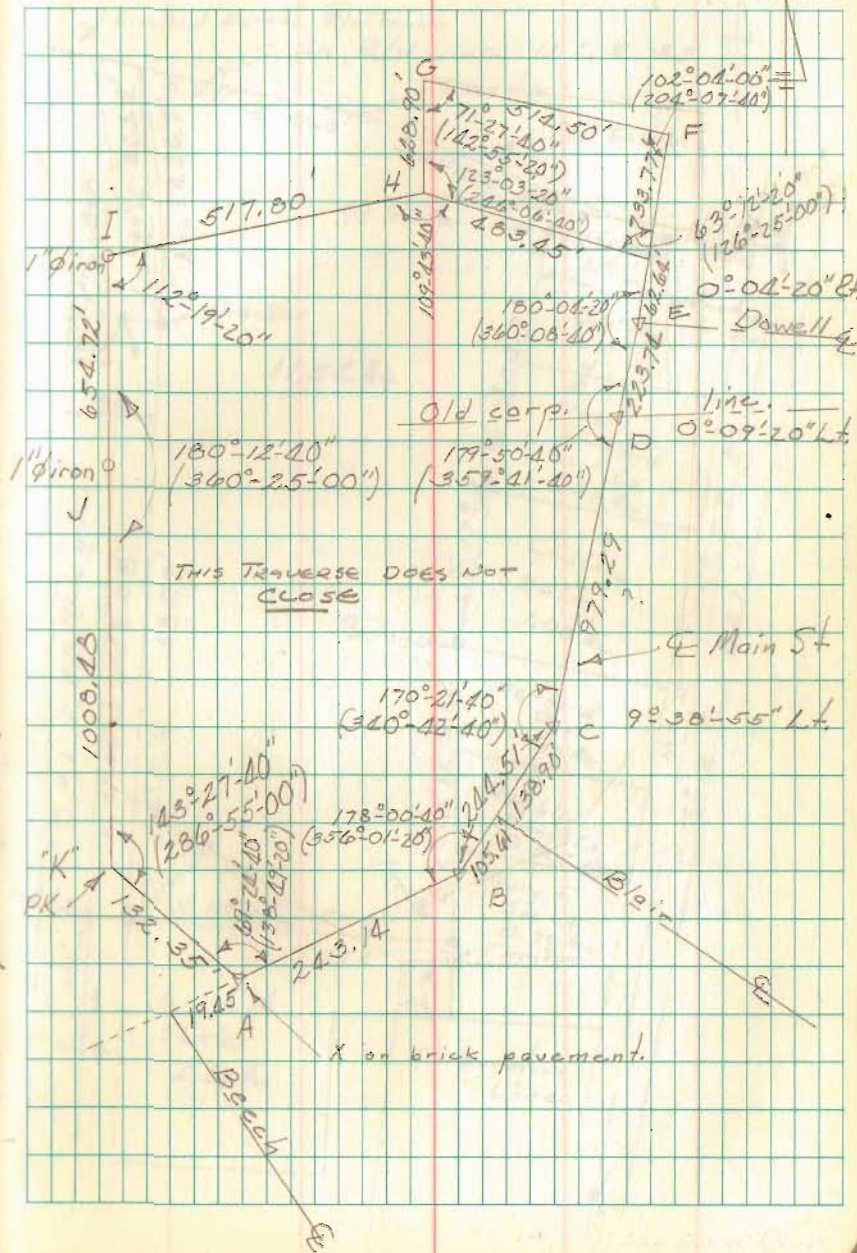


4979

INDEXED ON MAP

March 1969

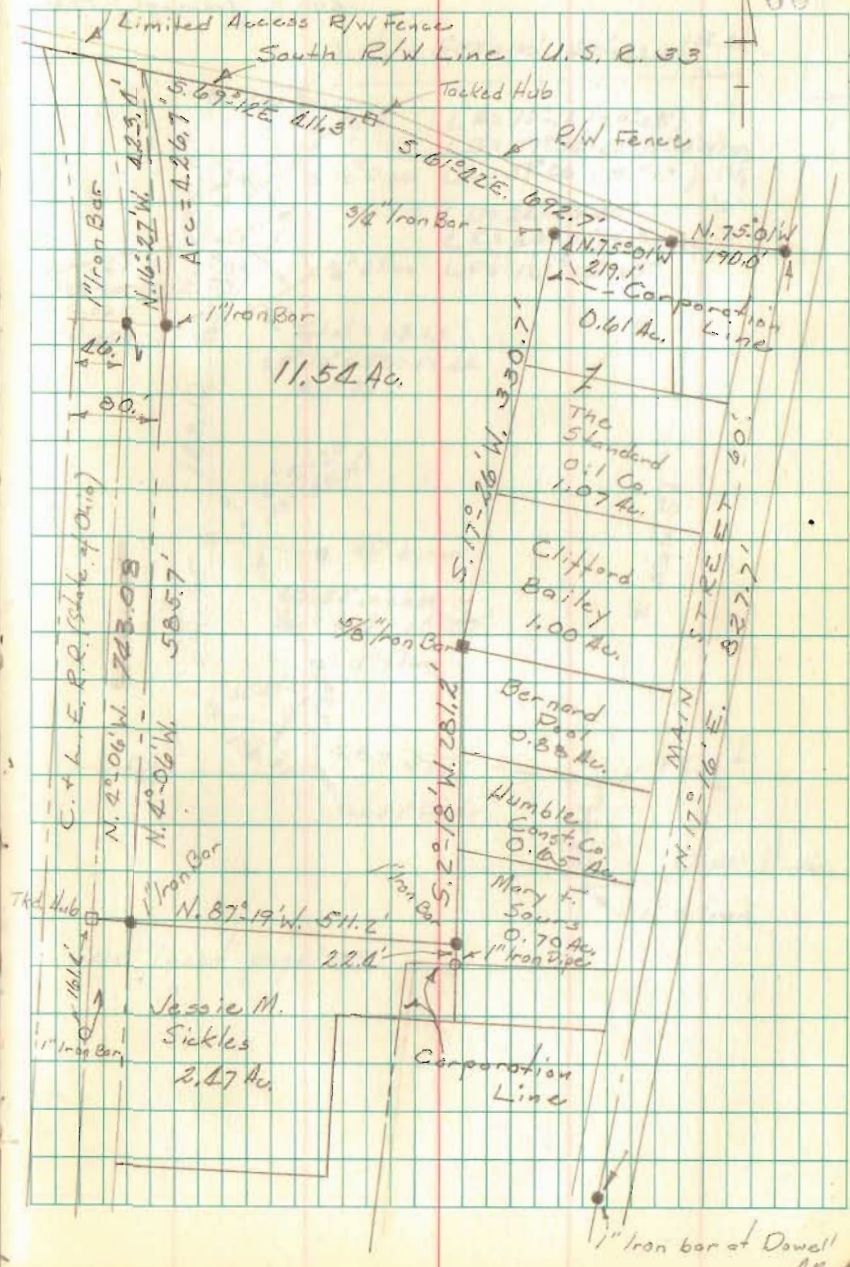
59



Lake Township V.M.S. 2873
 Survey of Carl S. Crone Property

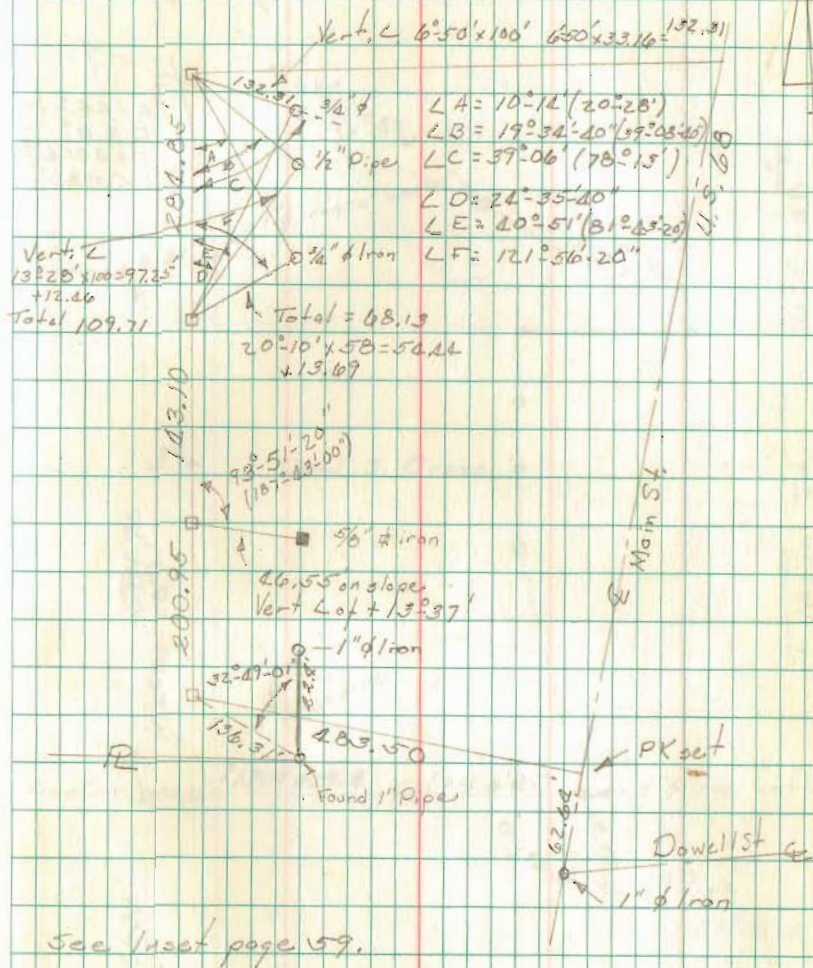
March, 1967

60



cont. / ramp pg. 59+60

61



cont from pgs. 59+60

$\Delta = 45^{\circ} - 36'$
 $D = 6''$
 $T = 201.4$
 $L.C. = 760'$

