

Received 4-16-87

OK. 4-21-87 CA

LESLIE H. GEESLIN  
REGISTERED SURVEYOR NO. 5248  
P. O. BOX 274  
RUSHSVLVANIA, OHIO 43347

TELEPHONE: (513) 468-2793

WISH SURVEY

April, 1987



*Leslie H. Geeslin*

The following described real estate situated in the State of Ohio, County of Logan, Township of Lake, being part of Virginia Military Survey No. 2873 and more particularly described as follows:

Beginning at 0.625 INCH iron bar in the old centerline of Township Road 217 and the west line of Conrail.

Thence with said centerline N. 45° 34' 45" W. (This bearing is taken from a survey by the Ohio Department of Highways in 1965 and all other bearings are from angles and distances measured in this field survey) 216.76 feet to a 0.625 inch iron bar.

Thence N. 54° 14' 34" W. 107.04 feet to a stone in the Ludlow Line.

Thence with the Ludlow Line and the east line of Sec. 36, T. 4, R. 14, B.M.R.S., said line being the east line of Cooper Sand & Gravel Co.'s 87.637 acre tract as described in O.R. Vol. 33 Page 517 N. 15° 02' 09" W. 1379.61 feet to a 0.625 inch iron bar.

Thence N. 87° 13' 00" E. 1174.77 feet to a 0.625 inch iron bar in the west line of Conrail.

Thence with said west line S. 19° 41' 14" W. 1703.25 feet to the place of beginning.

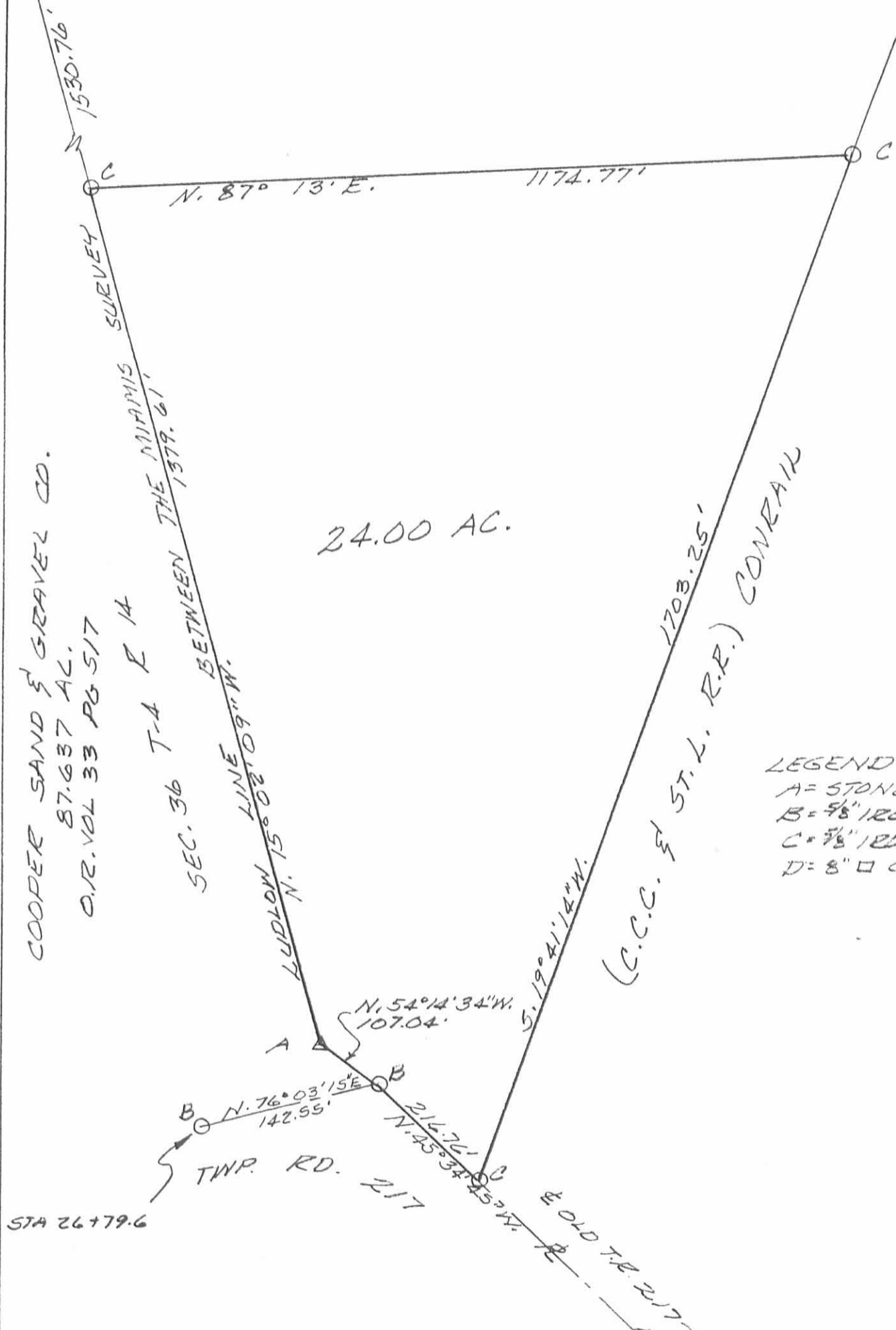
Containing 24.00 acres more or less.

The above described 24.00 acre tract being on the south side of James Wish's <sup>120.31</sup>~~124.49~~ acre tract as described in <sup>O.R.</sup>~~D.B.~~ Vol. <sup>13</sup>~~340~~ Page <sup>222</sup>~~27~~.

Reference is hereby made to a plat of this survey on file with the Logan County Engineer.

INDEXED ON MAP  
49351D

N.W. COR. OF  
 120.31 AC. TRACT  
 DB. VOL. 340 PG 87  
 OR 13 222



24.00 AC.

COOPER SAND & GRAVEL CO.  
 87.637 AC.  
 O.R. VOL 33 PG 517

SEC. 36 T-4 R 14  
 BETWEEN THE MIAMIS SURVEY  
 1379.61'

LUDLOW LINE  
 N. 15° 02' 09" W.

(C.C.C. & ST. L. R.R.) CONRAIL  
 1703.25'

LEGEND:  
 A = STONE FD.  
 B = 5/8" IRON BAR FD  
 C = 5/8" IRON BAR SET  
 D = 8" □ COR. POST



STA 26+79.6

SURVEY OF 24.00 AC. TRACT  
 IN VIRGINIA MILITARY SURVEY 2873,  
 LAKE TOWNSHIP, LOGAN COUNTY,  
 OHIO FOR JAMES WISH.  
 APRIL, 1987  
 SCALE: 1" = 200'

INDEXED ON MAP  
 4935 IP



Leslie H. Geeslin  
 LESLIE H. GEESLIN  
 REGISTERED SURVEYOR

Brackney Description

The following described real estate situated in the Township of Lake, County of Logan, State of Ohio and being a part of Virginia Military Survey No. 2873 and being more particularly described as follows:

Beginning at a stone corner marking the Northeast corner of V. M. S. No. 2873 and the Northwest corner of V. M. S. No. 3317;

Thence with the line between V. M. S. No. 2873 and V. M. S. No. 3317, S. 5° 00' E. 3,181.00 feet to a post in the present northwest property line of Penn Central Railroad (formerly known as the C. C. C. & St. L. R.R. or the Bellefontaine and Indiana Railroad);

Thence with the present property line of said railroad, S. 21° 00' W. 3,109.30 feet to a point in the centerline of T. R. No. 217;

Thence with the centerline of T. R. No. 217 and the centerline produced, N. 50° 00' W. 327.60 feet to a stone in the Ludlow Line;

Thence with the Ludlow Line, N. 13° 45' W. 2,912.00 feet to a post, said post being the southwest corner to Emery L. Meredith's present 106.32 Acre tract;

Thence with Meredith's line four consecutive bearings and distances, N. 78° 30' E. 830.00 feet to an iron pipe, N. 14° 15' W. 320.00 to a corner post, N. 75° 15' E. 980.00 feet to a stone and N. 14° 45' W. 2,325.00 feet to a stone in the north line of V. M. S. No. 2873 and the south line of V. M. S. No. 3324;

Thence with the line between V. M. S. No. 2873 and V. M. S. No. 3324, N. 84° 1' E. 668.50 feet to the place of beginning, containing 124.49 Acres, more or less.

I hereby certify that this is a true and accurate description as prepared by me on April 20, 1972.

INDEXED ON MAP

4935 2D



*Daniel E. Gilbert*  
Daniel E. Gilbert, P.S.  
Reg. Sur. No. 5402  
1041 N. Main St.  
Bellefontaine, Ohio 43311



JOHN L. BRUGLER ETUX

143.45 ACRES

V.M.S. 3324  
V.M.S. 2873

V.M.S. 3324  
V.M.S. 3317

FOREST THOMAS ETUX  
5300 ACRES  
V.M.S. 2873  
Sec. 31 T.3 R.15

EMERY LEWIS MERIDITH  
ETAL  
106.32 ACRES

PAUL F. WISH ETUX  
6194 ACRES

V.M.S. 3317  
V.M.S. 2873  
S. 5°00' E. 3181.0'

986 ACRES

LUDLOW

LINE

AMALIE COWMAN  
119.77 ACRES TOTAL

124.49 ACRES

CORNER POST

IRON PIPE

Post

Post

N. 78°30' E. 832.0'

N. 75°15' E. 980.0'

N. 14°45' W. 2325.0'

N. 85°15' E. 668.50'

STONE

STONE

STONE

N. 14°45' W. 320.0'

N. 13°45' W. 2912.0'

V.M.S. 2873  
Sec. 36 T.4 R.14

S. 2°00' W. 1007.2'

3109.30'

ORIGINAL BELLEFONTAINE AND INDIANA RAILROAD  
NOW PENN CENTRAL

V.M.S. 3317  
V.M.S. 2873

BRACKNEY SURVEY  
V.M.S. No. 2873  
LAKE TOWNSHIP  
LOGAN COUNTY, OHIO  
APRIL 20, 1972

SCALE: 1" = 400'

INDEXED ON MAP

4935 2P

PLAT PREPARED BY:  
DANIEL E. GILBERT, P.S.  
REG. SUR. NO. 5402  
1041 N. MAIN ST.  
BELLEFONTAINE, OHIO 43311

