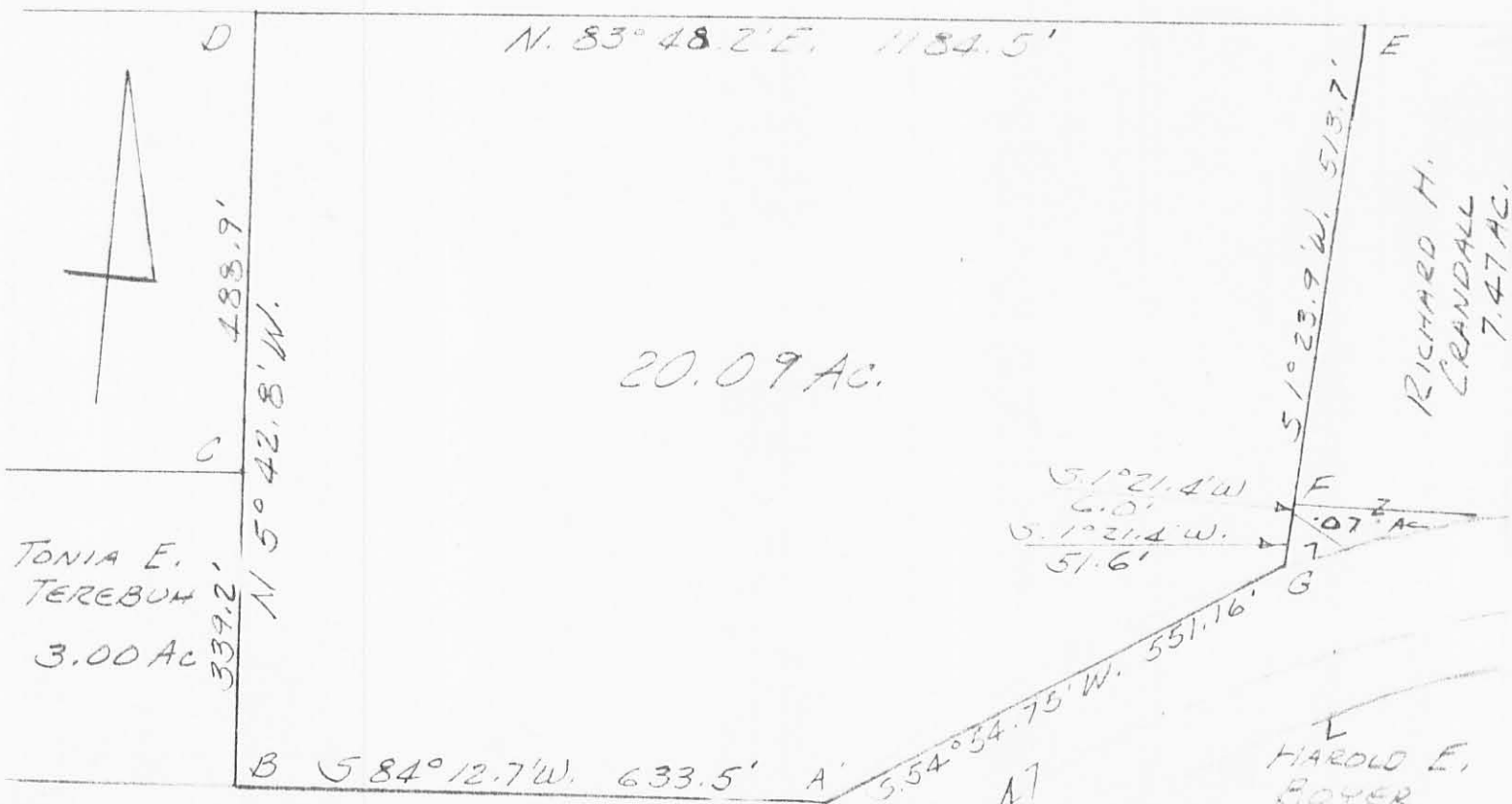


LEORA KARUS  
99.48 AC.



TONIA E.  
TEREBUH  
3.00 AC

RICHARD H.  
CRANDALL  
7.47 AC.

HAROLD E.  
BOYER  
2.43 AC

V.M.S. 2873

- A = 3/4"  $\phi$  BAR SET
- B = WOOD POST
- C = WOOD POST
- D = 3/4"  $\phi$  BAR SET
- E = STEEL COR. POST
- F = 1" PIPE FD.
- G = 3/4"  $\phi$  BAR SET

CRANDALL-ROBERTS SURVEY  
V.M.S. 3317  
LAKE TOWNSHIP  
LOGAN COUNTY, OHIO  
MARCH, 1973

REF:

CONST. PLAN LOG. 47 (14.16 - 14.51) PG 138  
D.B. VOL. 274 PG 114  
D.B. VOL 327 PG 848  
DRAWER 12 - SURVEY 1195

5290 1P

INDEXED ON MAP

SCALE: 1" = 200'

LESLIE H. GOSSELIN  
REG. SURVEYOR 5248