

# Lee Surveying and Mapping Co.



CLAYTON M. LEE, P.S.

JEFFREY I. LEE, P.S.

855 East Sandusky Avenue  
Bellefontaine, Ohio 43311  
Phone 593-5780



Farm Surveys • Lot Surveys • Topography • Subdivisions • Construction Layout

## (NEW DESCRIPTION OF TRACT 1)

LOGAN COUNTY, OHIO  
COMMON PLEAS COURT, (Case No. 83-316)

Lying in Fractional Section 36, T-4, R-14, B.M.R., Lake Township,  
Logan County, Ohio.

Being all of that 8.97 acre tract as designated Tract 1 of Common  
Pleas Case No. 83-316 plus 120.00 feet (4.263 acres) off the north side  
of Tract No. 3 of said Common Pleas Case No. 83-316 and being more par-  
ticularly described as follows:

Beginning at a section corner stone found on the center-line of  
Township Road 56, at the intersection of the center-line of Township Road  
218, being on the west line of Lake Township, and marking the northwest  
corner of said Fractional Section 36 and also being the northwest corner  
of aforesaid 8.97 acre tract.

THENCE, with the north line of said Section 36 and the north line of  
said 8.97 acre tract, S 83°-55' E, a distance of 1466.5 feet to an iron  
rod on the northeast corner of said Fractional Section 36 on the Ludlow  
Line.

THENCE, with said Ludlow Line, S 13°-36' E, a distance of 393.05 feet  
to an iron rod, passing an iron rod at 266.1 feet (Southeast corner of 8.97  
acres).

THENCE, parallel to and 120.00 feet distant southerly from, (Measured  
at right angles) the south line of said 8.97 acre tract, N 84°-16' W, a  
distance of 1602.18 feet to a railroad spike set on the center-line of  
Township Road 56 (West line of Lake Township).

THENCE, with said center-line of Township Road 56, N 6°-33' E, a dis-  
tance of 380.41 feet to the point of beginning, passing a railroad spike  
at 120.01 feet (southwest corner of 8.97 acre tract).

Containing 13.233 acres. (NEW TRACT 1).

Prepared by:



Clayton M. Lee  
Registered Surveyor No. 6181  
June 19, 1984



7081 1D-1

INDEXED ON MAP

ORIGINAL STAMP IN GREEN

# Lee Surveying and Mapping Co.



CLAYTON M. LEE, P.S.  
JEFFREY I. LEE, P.S.

855 East Sandusky Avenue  
Bellefontaine, Ohio 43311  
Phone 593 5780



Farm Surveys • Lot Surveys • Topography • Subdivisions • Construction Layout

## NEW DESCRIPTION OF TRACT 3

LOGAN COUTNY, OHIO  
COMMON PLEAS COURT, (Case No. 83-316)

Lying in Fractional Section No. 36, T-4, R-14, B.M.R., Lake Township,  
Logan County, Ohio.

Being the greater part of that 91.9 acres as described in Volume 358,  
Page 323 and that Tract III as designated in Common Pleas case 83-316.  
Being more particularly described as follows:

Beginning at a railroad spike set on the center-line of Township Road  
56 (West line of Lake Township and west line of Fractional Section 36) a  
distance of 380.41 feet southerly along said section line from the north-  
west corner of said Fractional Section 36.

THENCE, S 84°-16' E, a distance of 1602.18 feet to an iron rod set  
on the Ludlow Line (East line of Section 36).

THENCE, with the Ludlow Line, S 13°-36' E, a distance of 2850.65 feet  
to the north line of a 1 acre tract (Volume 398, Page 607).

THENCE, with said north line, S 86°-43' W, a distance of 120.5 feet.

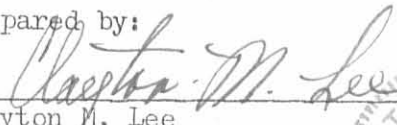
THENCE, continuing with the west line of said 1 acre tract,  
S 13°-07' W, a distance of 120.3 feet to the southeast line of U.S. Route 33.

THENCE, with said line of U.S. Route 33, N 48°-18' W, a distance of  
2998.6 feet to the center-line of Township Road 56. (West line of Lake  
Township).

THENCE, with said center-line, N 6°-33' E, a distance of 1067.49 feet  
to the point of beginning.

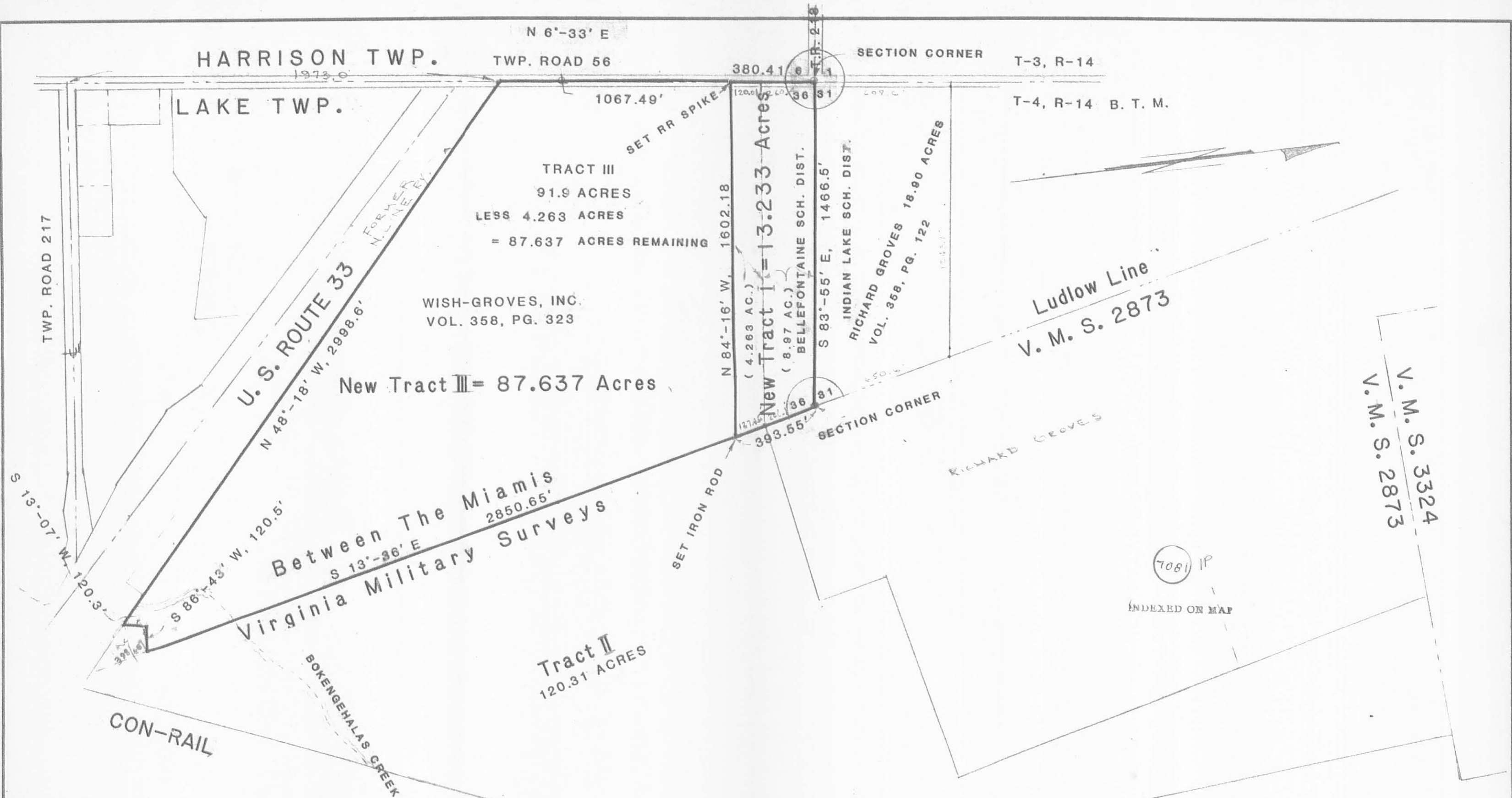
Containing 87.637 acres. (NEW TRACT III).

Prepared by:

  
Clayton M. Lee  
Registered Surveyor No. 6181  
June 19, 1984



7081 107



COMMON PLEAS COURT of  
Logan County, Ohio, Case No. 83-316

Revision of Line and Acreage Between Tracts No. 1 & No. 2  
Wish - Groves Property located in Section 36, T-4, R-14, B. T. M.  
Lake Township, Logan County, Ohio as surveyed and monumented by:

*Clayton M. Lee*  
Clayton M. Lee Ohio Reg. Surveyor No. 6181



ORIGINAL STAMP IN GREEN

TOLERANCES (EXCEPT AS NOTED)	REVISIONS			DRAWN BY C.M. LEE	SCALE 1" = 400'	MATERIAL
	NO.	DATE	BY			
DECIMAL	1			CHK'D	DATE	DRAWING NO. L-1150-3
FRACTIONAL	2					
+	3					
ANGULAR	4					
	5					
				TRACED	APP'D	

Received 2-24-88 OK (C.R.)

# Lee Surveying and Mapping Co.



Farm Surveys • Lot Surveys • Topography • Subdivisions • Construction Layout

855 EAST SANDUSKY AVENUE  
BELLEFONTAINE, OHIO 43311

(513) 593-5780

CLAYTON M. LEE, P.S.  
JEFFREY I. LEE, P.S.

COOPER SAND AND GRAVEL  
C.A.U.V. Survey  
Commercial Area

Lying in Fractional Section 36, T-4, R-14, B.M.R., Lake Township, Logan County, Ohio.

Being 9.72 acres out of that 87.637 acre tract lying in the name of Cooper Sand and Gravel, Volume O.R. 33, Page 517. Being more particularly described as follows:

BEGINNING at an iron rod found at the original center-line of Township Road 217 and the Ludlow Line. (See U.S. Route 33 drawings for reference.)

THENCE, with the Ludlow Line N 14°-38'-10" W, a distance of 81.87 feet to a stone found at the southeast corner of the aforesaid 87.637 acres and the TRUE POINT OF BEGINNING.

THENCE, following the northerly lines of a 1.89 acre tract in the name of Cooper Sand and Gravel (Vol. 37, Pg. 642) the following four bearings and distances:

N 47°-26'-25" W, a distance of 60.0 feet  
S 13°-38'-25" E, a distance of 66.0 feet  
S 80°-33'-35" W, a distance of 120.5 feet  
S 9°-33'-35" W, a distance of 89.6 feet to a point on the limited access right-of-way of U.S. Route 33 and being 249.7 feet left of center-line station 806+05.4.

THENCE, following the aforesaid limited access right-of-way, N 49°-20' W, a distance of 730.0 feet.

THENCE, through the aforesaid 87.637 acres the following three bearings and distances:

N 40°-40' E, a distance of 372.1 feet  
N 14°-38'-10" W, a distance of 342.4 feet  
N 75°-21'-50" E, a distance of 300.0 feet to a point on the Ludlow Line and the easterly line of the 87.637 acre tract.

THENCE, following the Ludlow Line, S 14°-38'-10" E, a distance of 1068.0 feet to the point of beginning.


Containing 9.72 acres.

This description prepared from records and partial field survey for C.A.U.V. purposes only and is not intended for transfer.



ORIGINAL STAMP IN GREEN

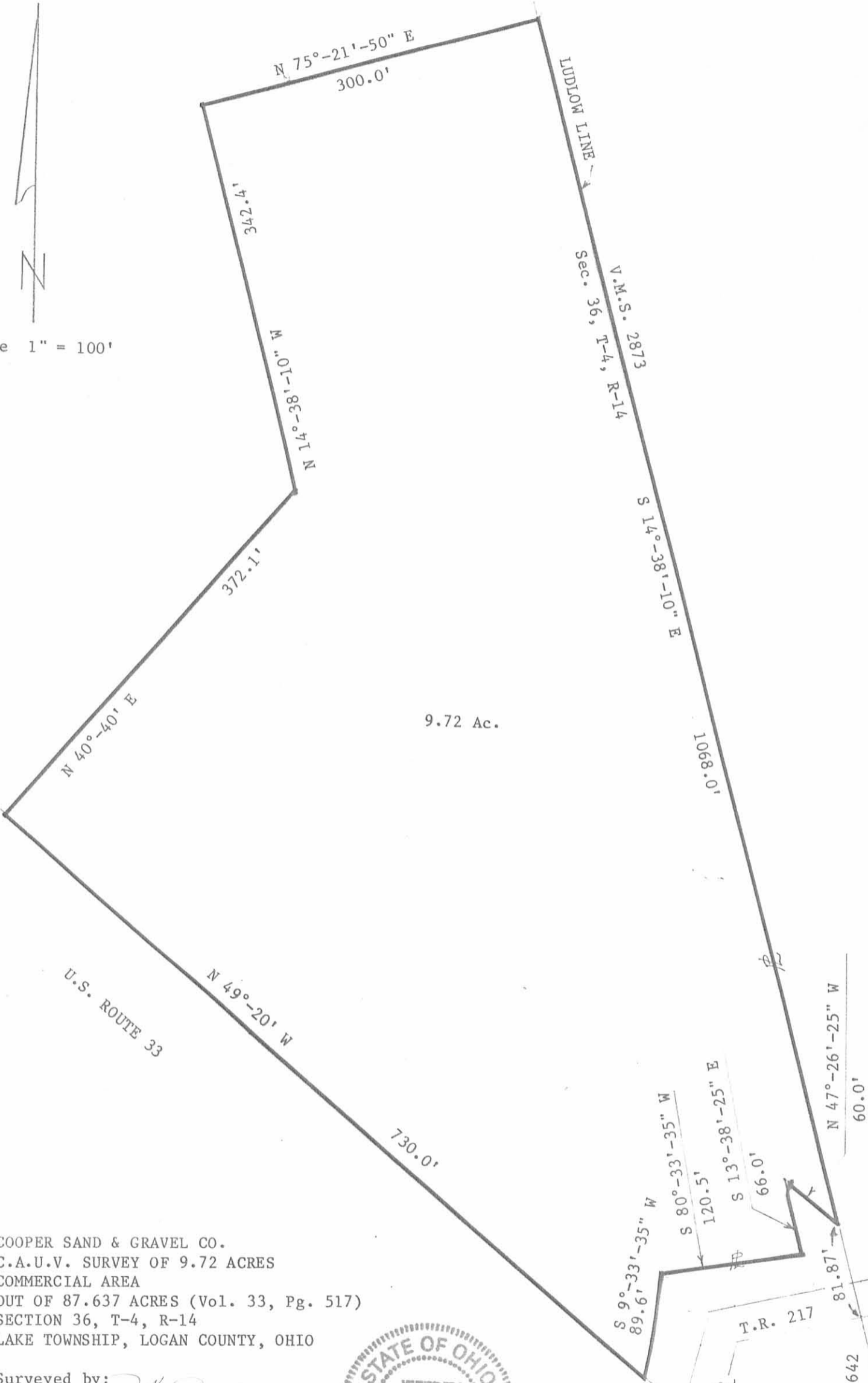
Prepared by:

  
Jeffrey I. Lee  
Professional Surveyor No. 6359  
January 30, 1988

INDEXED ON MAP  
70812D



Scale 1" = 100'



9.72 Ac.

U.S. ROUTE 33

COOPER SAND & GRAVEL CO.  
C.A.U.V. SURVEY OF 9.72 ACRES  
COMMERCIAL AREA  
OUT OF 87.637 ACRES (Vol. 33, Pg. 517)  
SECTION 36, T-4, R-14  
LAKE TOWNSHIP, LOGAN COUNTY, OHIO

Surveyed by:

Jeffrey I. Lee  
Professional Surveyor No. 6359  
January 30, 1988



ORIGINAL STAMP IN GREEN

INDEXED ON MAP  
7081 2P

COOPER S & G  
1.89 AC.  
Vol. 37, Pg. 642