

(8274)

9th mo. (Sept) 7th 1832 v Survey No 188

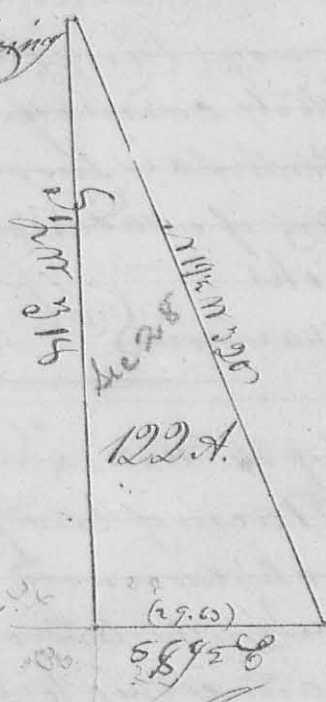
Surveyed 122 acres of land for John Gunn

Beginning at the corner between Sections 28, 29, 34 & 35 Town & Range 14 E. M.D., an elm 67° 6' 20 links dist a Red oak Stump 564 W 21 links dist original bearing trees - thence on the line between Sec. 28 & 34 S 1/2 N 3/8 poles crossing 2 small branches, to the corner between Sec. 27, 28, 33 & 34 a red oak 77° E 17 links a red oak 552 W 47 links dist. all down - thence between Sec. 27 & 28 S 89 1/2° E 120 poles to Ludlow's line, found no corner trees -

(all having been cut down)

thence with said line N 19 1/2° W 320 poles crossing two branches to the E. corner of Sec 34, the trees are cut down, thence west 3 poles to the beginning being the entire fractional Sec 34 T. 4 R. 14 M.D.

Beginning



Water Gunn }
John Gunn }

La W. Hammon
C. S. L. C.

Melhorn
Twaddle
Connell
Cammis
McGeorge

9th mo. (Sept) 20th 1832 Survey No 189

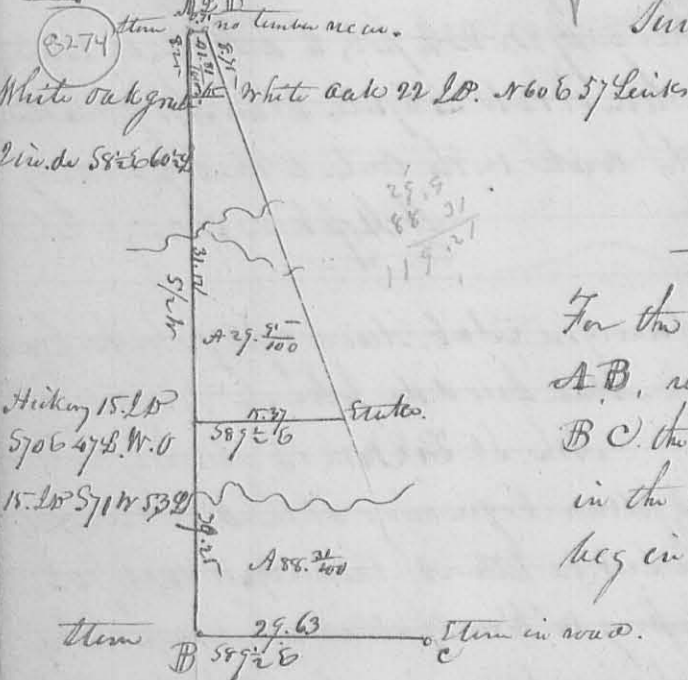
Surveyed and divided Sec. 28 T. 4 Range 13 M.D. as hereinafter described for Melhorn, Twaddle, Connell, Cammis, McGeorge & Wm. George

Beginnings at the corner of Sections 27, 28, 33 & 34 T. 4 R. 13 a bar oak N 8° E 12 links, the other original bearing tree is down and gone except the roots, I marked a bar oak S 31° E 35 links - thence between Secs 27 & 28 east at 161 poles passed a red oak S 4° W 25 links a white oak S 84° E 26 links (original go see corner trees) 322 poles to a stone at the corner of Secs 21, 22, 27 & 28 (the origi

the interior corner (a letter D) at each 35 links ending in the corner at
700, to the original Quarter Section Corner on the South line of the Section -
at letter H. For the contents of each lot see the map, with the names
named thereon.

Andrew Gray }
Wm. McShaino } Ch. Men Dan Hopkins County Surveyor L.C.

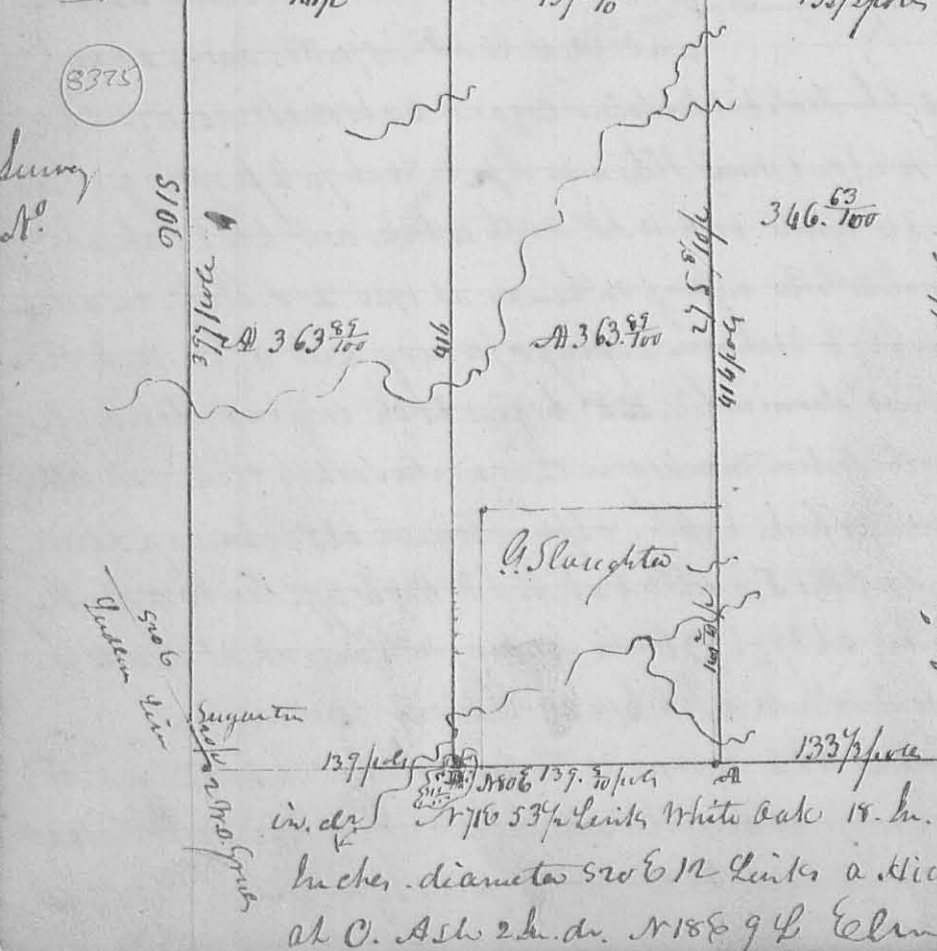
N^o 319



Surveyed March 1836.

Note this plat represents
the survey of Tract 526 L.C. 14400
Surveyed and sub. divided for R. Pot-
terton Agent for J. Gordon - W. C.
For the contents of each lot see the plat. The line
A B, represent the Western boundary of the sect -
B C the Southern. C D the Eastern. a sudden line
in the center of the Milford road At A, the
beginning of the survey, a stem, the origin^e
tree dem. all dem. at the corner of the Sect.
D Hopkins Co. Surveyor L.C.

N^o 320



This plat represents a survey
made for John Slaughter
Sold of the Garrison treaty
line, which bound it with
North, and G. Lancy's
Survey N 3302 bound it
on the East. for the corner
& distance of the line south
plat - and also for contents.
Description of corners
At A, the beginning of L.
Slaughter part of the survey 5800
133 2/3 poles from the S.E. corner
the origin of survey, a sugar 12
in. dia. 1710 5/8 Links White oak 18 L.D. 1710 5/8 Links
lumber diameter 5206 12 Links a Hickory 3 L.D. N 326 16 2 Links
at C. Ash 2 L.D. N 188 9 4 Elm 5 in. dia. 5596 55 L.