

Dr. John B. Traul  
Sub division

Woodland

Surveyed July 1956

D. Dodson - Les Geeslin

18

INDEXED ON MAP

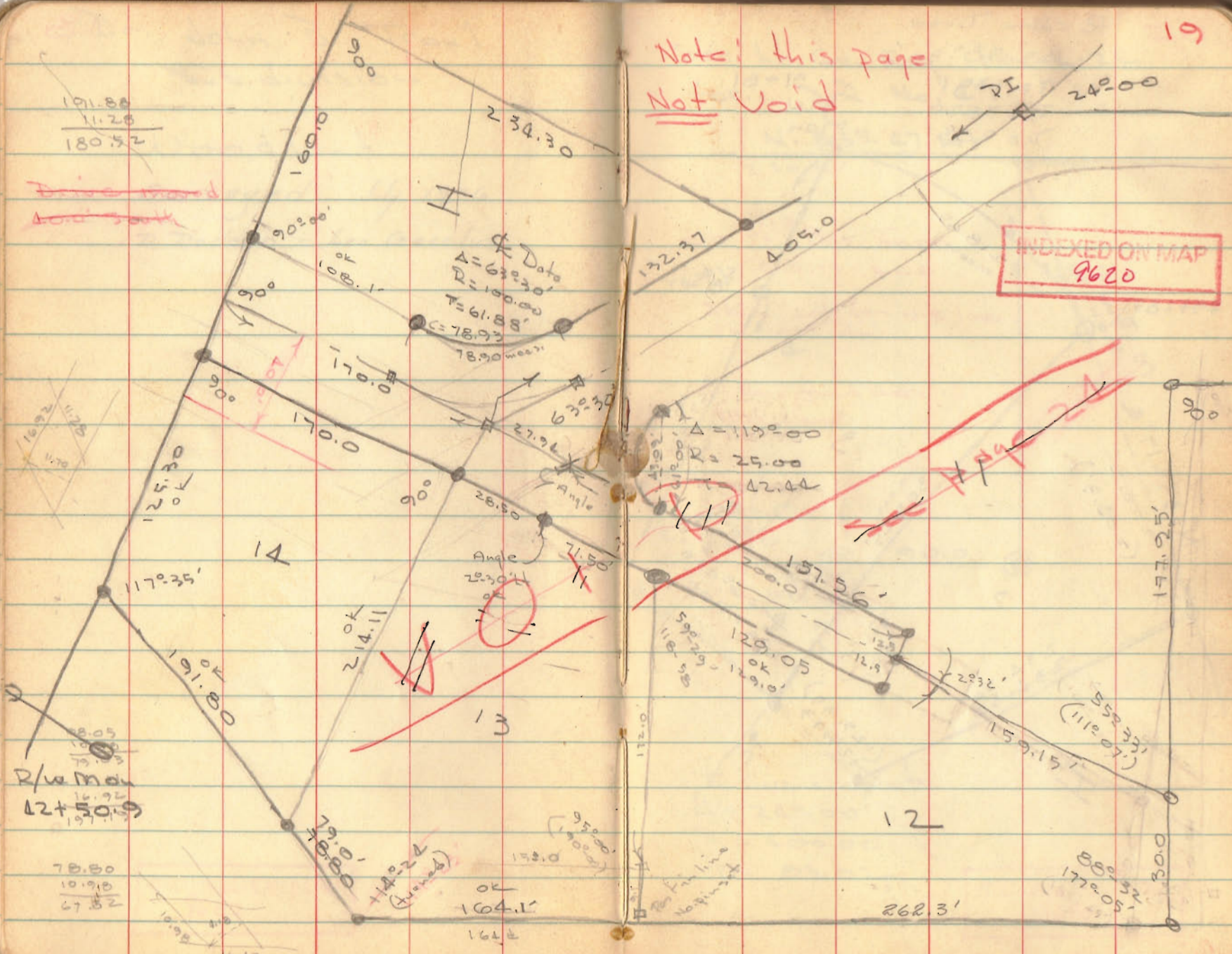
9620

Note: this page  
Not void

191.88  
 11.28  
 180.52

~~Drummond~~  
~~and south~~

INDEXED ON MAP  
 9620



Δ Data  
 $\Delta = 63^{\circ}30'$   
 $R = 100.00$   
 $T = 61.88'$   
 $C = 78.93'$   
 $18.90$

$\Delta = 119^{\circ}00'$   
 $R = 25.00$   
 $\Delta 2.44$

Angle  
 $28^{\circ}30'$   
 $11.0'$

12

13

14

R/w Map  
 $12+50.9$

78.80  
 10.98  
 67.82

OK  
 $164.1'$   
 $164'$

88° 32'  
 177° 05'

262.3'

177.25'

552.37'  
 (1112.07')

592.29'  
 118.58'  
 129.05'  
 129.0'

172.0'

97.00'  
 150.0'

164.1'  
 164'

1692  
 1178  
 1.78

164.1'



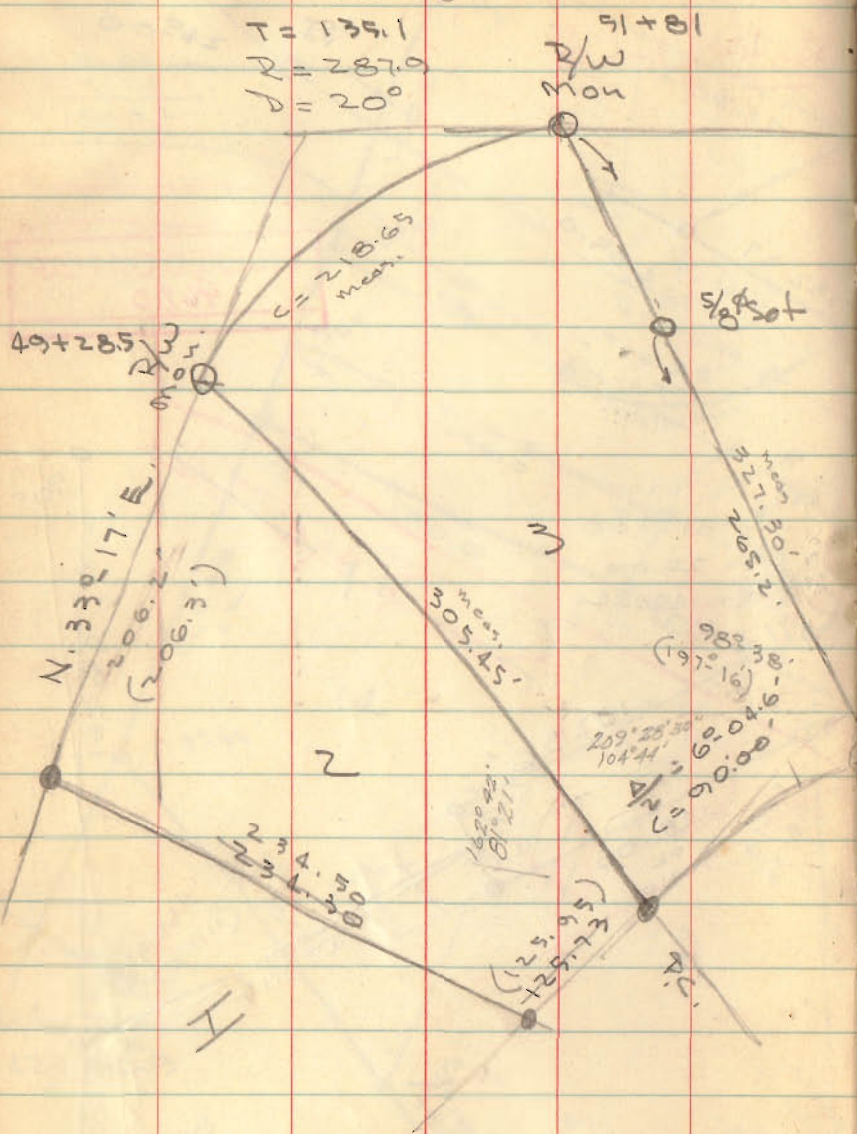
Curve Data.

$$\Delta = 50^{\circ}30'$$

$$T = 135.1$$

$$R = 287.0$$

$$b = 20^{\circ}$$



Sec ho. Co. Eng. Plan - L-22

20

for S.R. No. 47

N. 83°-47' E.

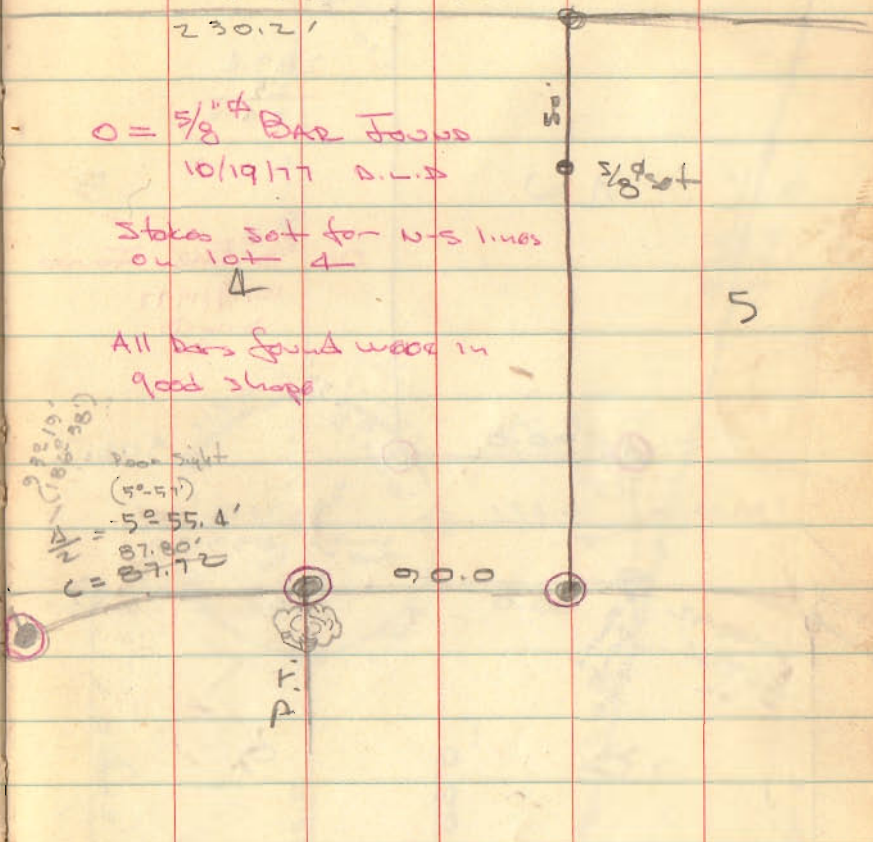
230.21

O = 5/8" BAR JOBS

10/19/77 A.L.D.

Stakes set for W-S lines  
on lot 4

All bars found were in  
good shape



Curve Data

$$\Delta = 20^{\circ}00'$$

$$R = 400.00$$

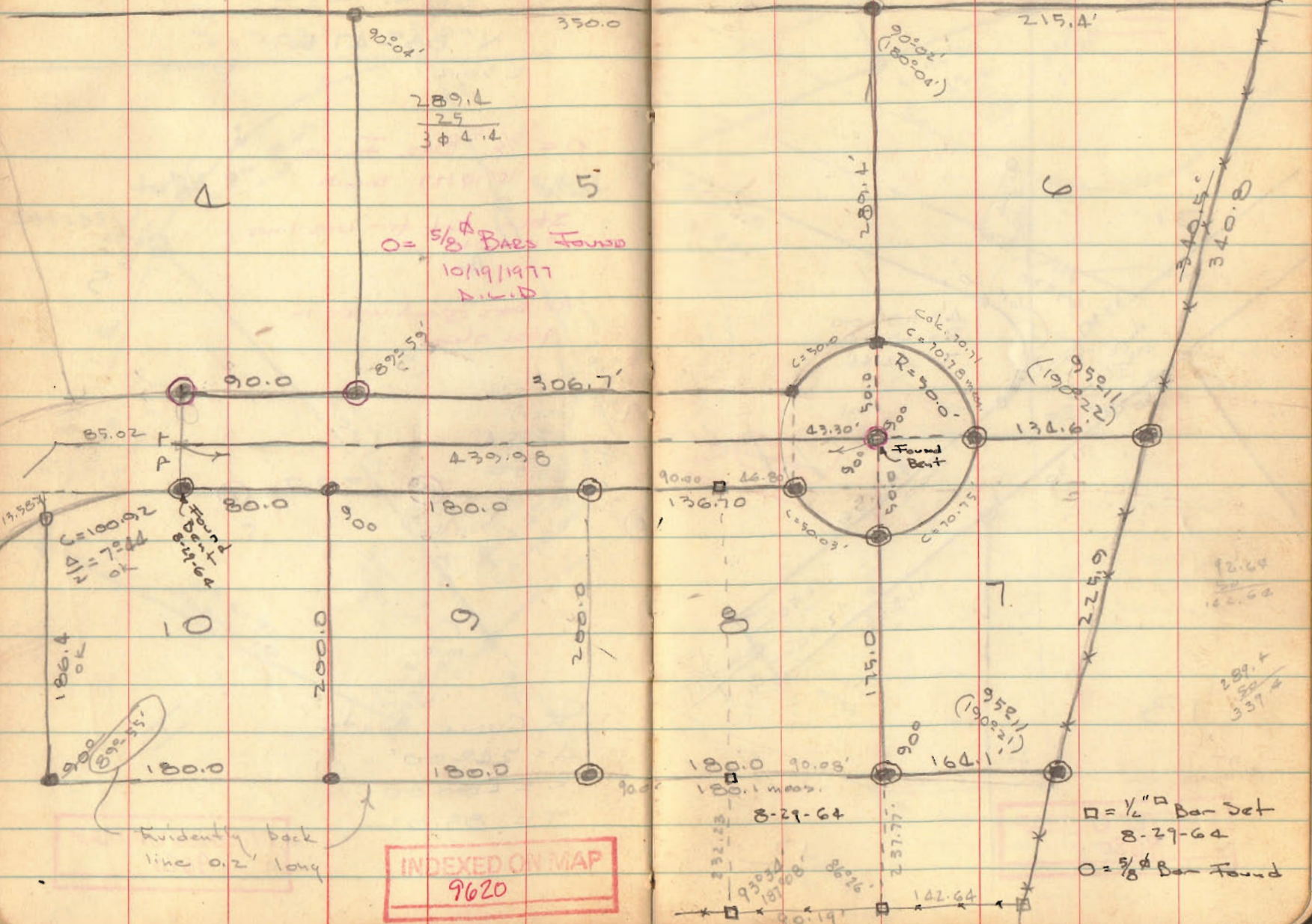
$$T = 85.02$$

INDEXED ON MAP

9620



Steel post in Conc.



$$\begin{array}{r} 289.4 \\ 25 \\ \hline 314.4 \end{array}$$

0 = 5/8 Bar Found  
10/19/1977  
D.L.D.

C=100.92  
Δ=7.044  
ok

89°55'

Evidently back line 0.2' long

INDEXED ON MAP  
9620

□ = 1/2" Bar Set  
8-29-64  
○ = 5/8 Bar Found

12.64  
20.62  
100.00

289.4  
20.62  
337.4

93.03  
187.00  
90.19

142.64







**SURVEYOR'S CERTIFICATE**

The accompanying plat represents a subdivision of land in Virginia Military Surveys 3317 and 2873, Lake Township, Logan County, Ohio. The tract has an area of 18 1/2 acres in lots and 2.64 acres in roads making a total of 17.76 acres. There are 7.53 acres in V.M.S. 3317 and 10.23 acres in V.M.S. 2873. Road widths are as indicated. \* indicates 90° iron pins set. All measurements on curves are chord distances. All measurements are in feet and tenths of feet. I hereby certify that the accompanying plat is a correct representation of WOODLAND, as surveyed July, 1956.



Dan R. Dodson  
Dan R. Dodson  
Registered Surveyor  
No. 4870

**STATE OF OHIO  
COUNTY OF LOGAN SS**

Be it remembered that on this the 10<sup>th</sup> day of August in the year of our Lord One Thousand Nine Hundred and Fifty six, before me a notary public in and for said County, personally came John B. Traul and Thelma Traul, grantors in the foregoing dedication, who acknowledged the signing thereof to be their free and voluntary act and deed.

My Commission Expires May 4, 1958  
Richard H. Hinesford  
Notary Public, State of Ohio

Richard H. Hinesford  
Notary Public

My Commission Expires



**ENGINEER'S OFFICE**

Approved this 13<sup>th</sup> day of August 1956

H. T. Keller  
Logan County Engineer

**ACCEPTANCE**

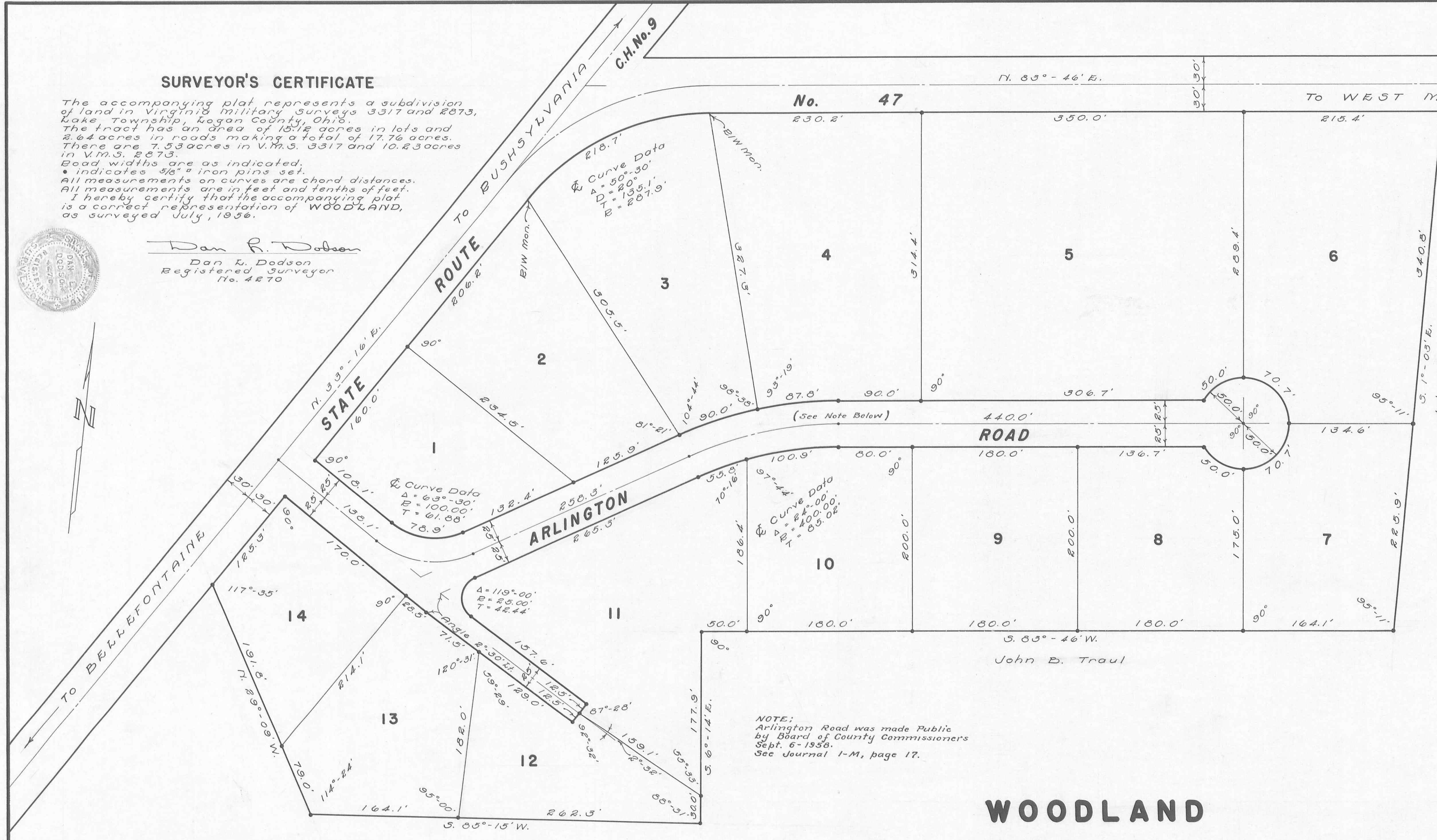
The annexed plat is hereby approved and accepted by the Board of County Commissioners at a regular meeting, this 13<sup>th</sup> day of August 1956.

Hugh Ruckelshaus  
Byrd Kennedy  
H. D. Lane  
Logan County Commissioners

**AUDITOR'S OFFICE**

The within lots transferred this 14<sup>th</sup> day of August 1956.

Harry E. Travis  
Logan County Auditor

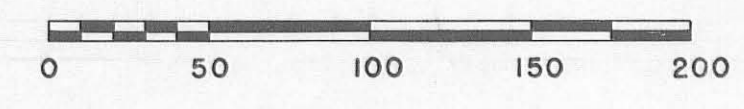


NOTE:  
Arlington Road was made Public  
by Board of County Commissioners  
Sept. 6-1958.  
See Journal 1-M, page 17.

**WOODLAND**

A SUBDIVISION OF LAND IN  
V.M.S. 3317 V.M.S. 2873  
LAKE TOWNSHIP LOGAN COUNTY  
OHIO

SCALE 1" = 60'



**DEDICATION**

Know all men by these presents that John B. Traul and Thelma Traul, proprietors of the land indicated on the accompanying plat, have authorized the platting of the same and do hereby dedicate the roads to the lot owners for their use with the exception of that portion of State Route No. 47, within the bounds of the accompanying plat, which is hereby dedicated to the public use forever, said portion containing 1.11 acres.

Richard H. Hinesford  
Jessie B. Fritz  
John B. Traul  
Thelma Traul

Witness

142988

**RECORDER'S OFFICE**

Received for record at 3:30 o'clock P.M. on this 14<sup>th</sup> day of August 1956.  
Recorded in Plat Book 4 Volume D Page 29

Dorinda L. Strauser  
Logan County Recorder