

School Lot (New) Lakeview

- A Iron Bar & Concrete & Stenerson St.
- B. Cross in concrete
- C. cross in concrete
- D R.R. Spike.
- E Stake
- F stake
- G Iron & of Lake St. See Book 419 Page 9

EF was made Parallel with DC.

CBFED = 2.60 Acres.

$$G \text{ Area} = 26.136 \text{ A}^2$$

$$\frac{26.136}{711.70} = 36.72' \text{ Move F.E. North}$$

TO make 8 Acres.

$$\text{Tan } 6^{\circ}-40' = 116.9$$

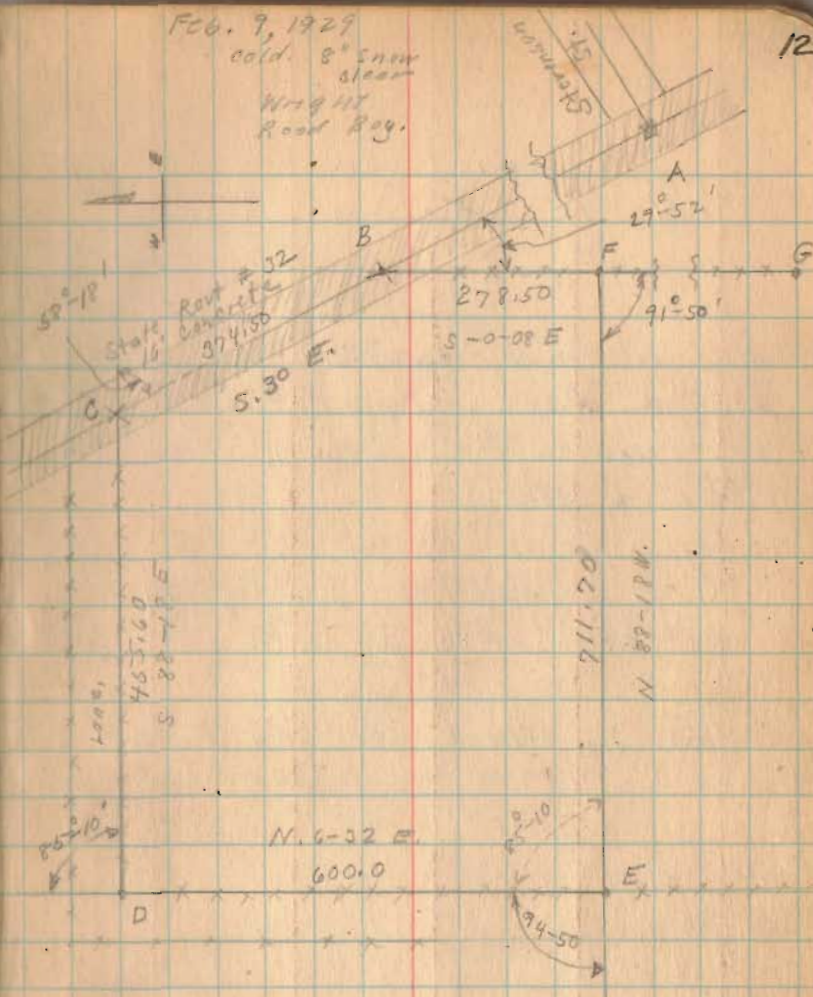
$$116.9(36.72) = 4.29$$

$$711.70 - 4.29 = 707.41$$

see Book 58.4 Page 72

Feb. 7, 1929
cold. 8" snow
clear
Wright
Road Bdy.

12



675
INDEXED ON MAP

This site was not used for
School. See later survey
Page 15.