

Pugh survey
Stokes Twp
Sec 34 T6 R8

PLAT
OF

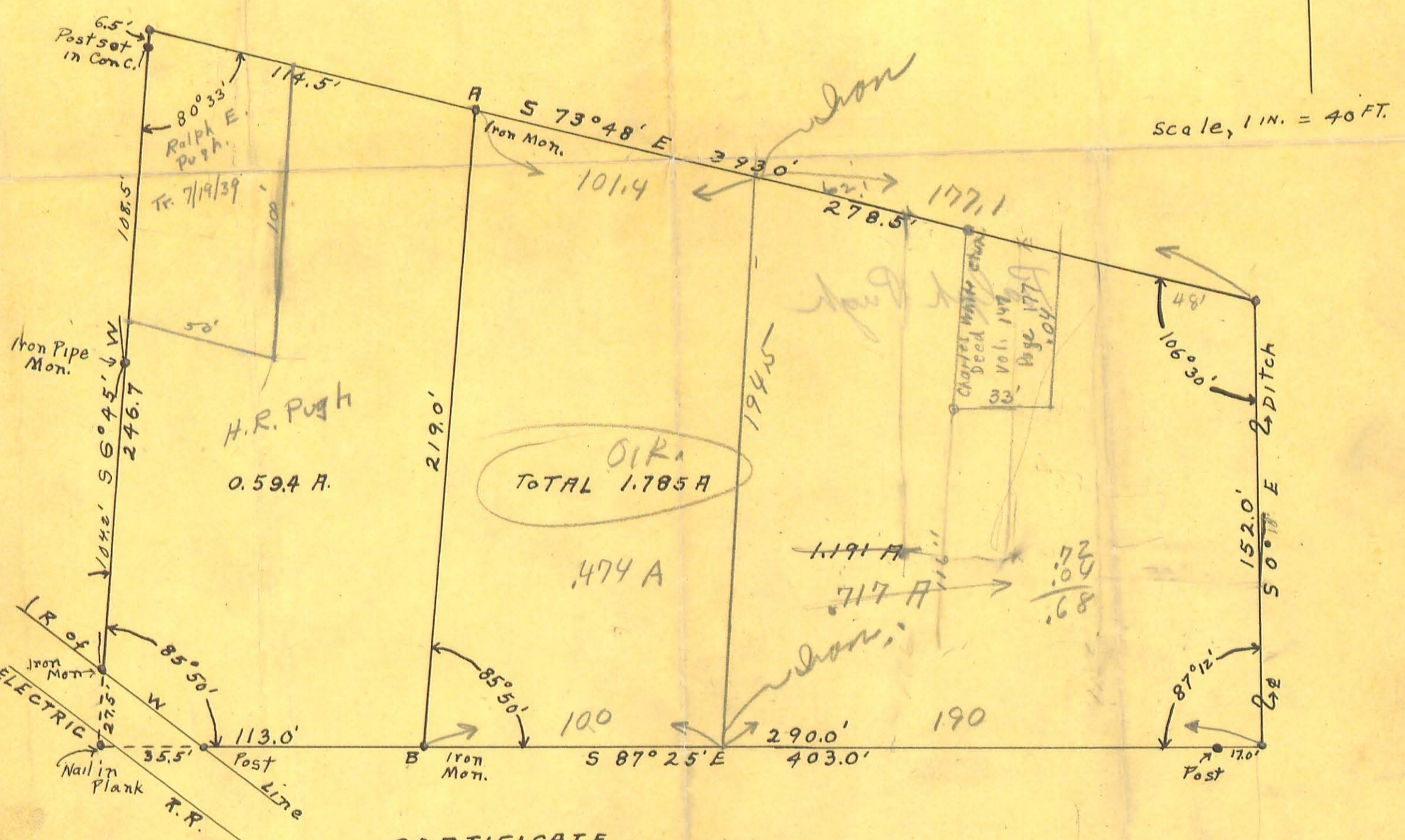
A SUBDIVISION OF A PART OF THE
NORTH HALF OF THE NORTH EAST
QUARTER OF SEC 34 T6 S. R8 E.
LAKE VIEW, LOGAN CO
OHIO

DESCRIPTION

Surveyed for Ralph E Pugh et al
to find the content of the within tract of land
and to set off one third of the content on the West
end of same by a line A-B parallel to the West line
of said Tract
The above tract of land, - Deeded to George Pugh as recorded
in Vol 83 Page 632 & 633 of Logan Co Record of Deeds



Scale, 1 in. = 40 FT.



CERTIFICATE

I hereby certify that the within Plat is a correct
return of a survey and division of the said above
lands as made by us on the 23rd day of June 1927

Kenton, Ohio, June 23, 1927

W E Myers C.E.
W W Myers C.E.

Copied from Blue Print by
Bill Smucker

59
178
131
0.47

