

REFERENCE:
 COTTAGE GROVE ADDITION
 CABINET A SLIDE 145
 INSKEEP FIELD BOOK 13
 PAGES 139 - 144

2349 - 1P

INDEXED ON MAP

SURVEYED AND PLATTED BY:
 DANIEL E. GILBERT, P.S.
 REG. SUR. NO. 5402
 1041 N. MAIN ST.
 BELLEFONTAINE, OHIO 43311

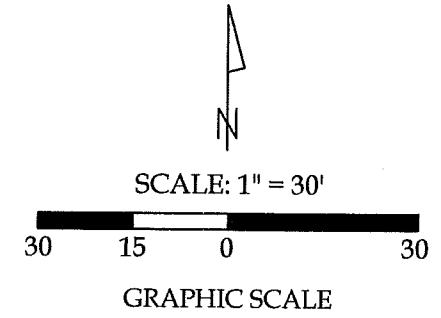
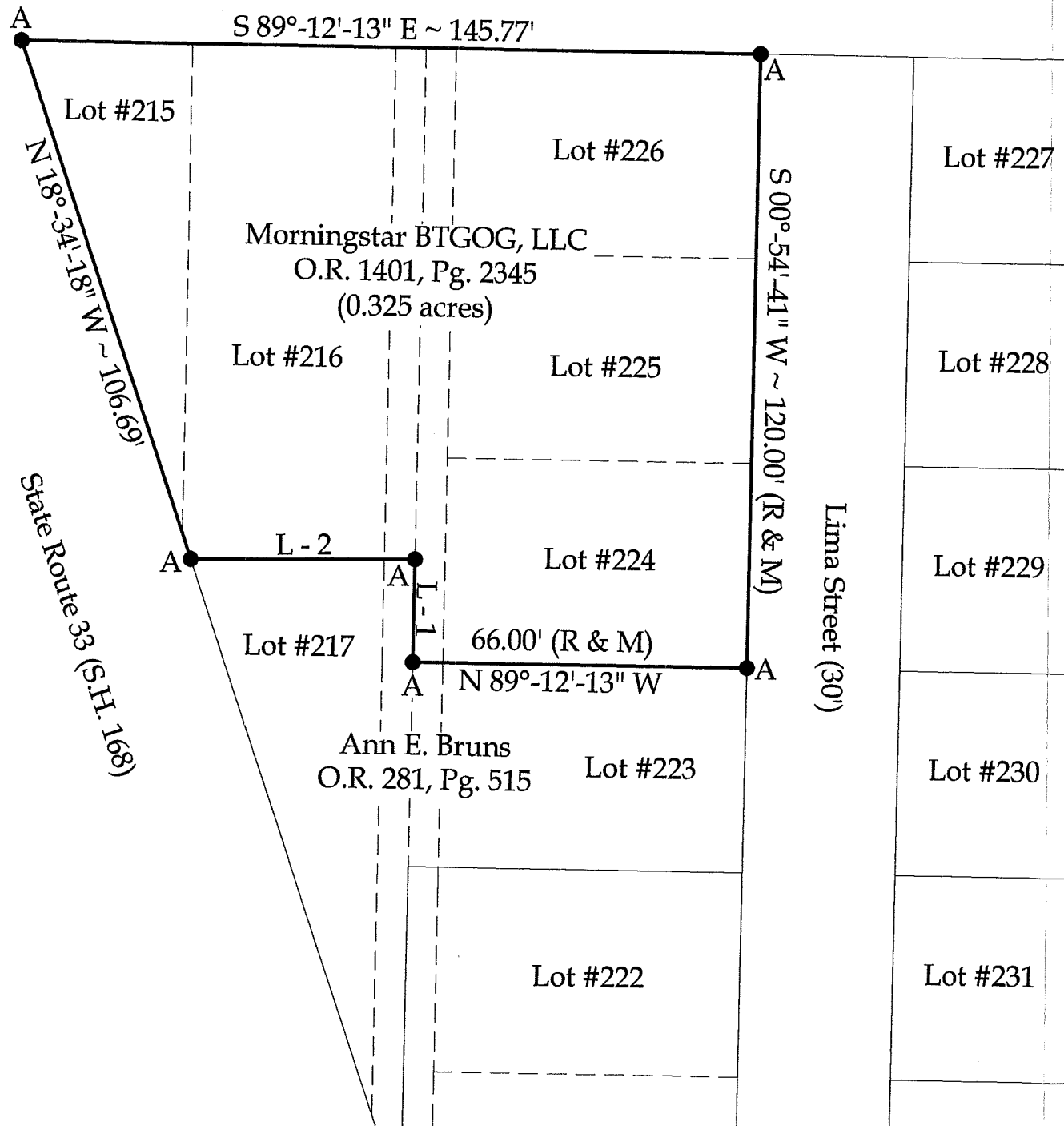
SURVEY OF LOTS 230, 231, 232
 VILLAGE OF LAKEVIEW
 STOKES TOWNSHIP
 LOGAN COUNTY, OHIO
 JUNE 19, 1982
 SCALE: 1" = 25'

8-15-22
APPROVED

Survey of Parcel #47-017-14-04-001-000 and being Lots #215, 216, 224, 225, & 226 and a portion of a Vacated 12' Alley in the Cottage Grove Addition (P.C. A, Slide 145) and being located in Section 27, Town 6 South, Range 8 East, Village of Lakeview, Stokes Township, Logan County, Ohio.

(Deed Referenced in O.R. 1401, Pg. 2345)

Kelly Avenue (Undeveloped)



Line Data

- L - 1 = N 00°-54'-41" E ~ 20.10'
- L - 2 = S 89°-48'-40" W ~ 44.20'

Legend

A = Set #5 Rebar



This plat represents an actual boundary survey completed under my direct supervision on May 09, 2022.

Kyle J. Binkley
Kyle J. Binkley, P.S. #8587

Surveys Referenced

Survey #2350, 8762, Plan L - 33 and R - 38 of the Logan County Tax Map Office.

Binkley
LAND SURVEYING, LLC
121 W. Auglaize Street
Wapakoneta, Ohio 45895
(419) 236-3768

BASIS OF BEARINGS: The system of bearings for this plat and legal description is based on the Ohio State Plane - North Coordinate System NAD83 (2011).

NOTE: All distances on this plat are measured unless otherwise noted.

INDEXED ON MAP
2349

CLIENT: Morningstar BTGOG, LLC			
SURVEYED BY: K.J.B./T.E.W.	DATE: 05-09-2022	DRAWN BY: K.J.B.	CHECKED BY: K.J.B.
SCALE: 1" = 30'	PAGE 1	OF 1	PAGES 1