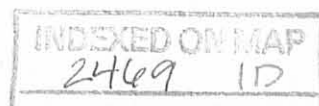


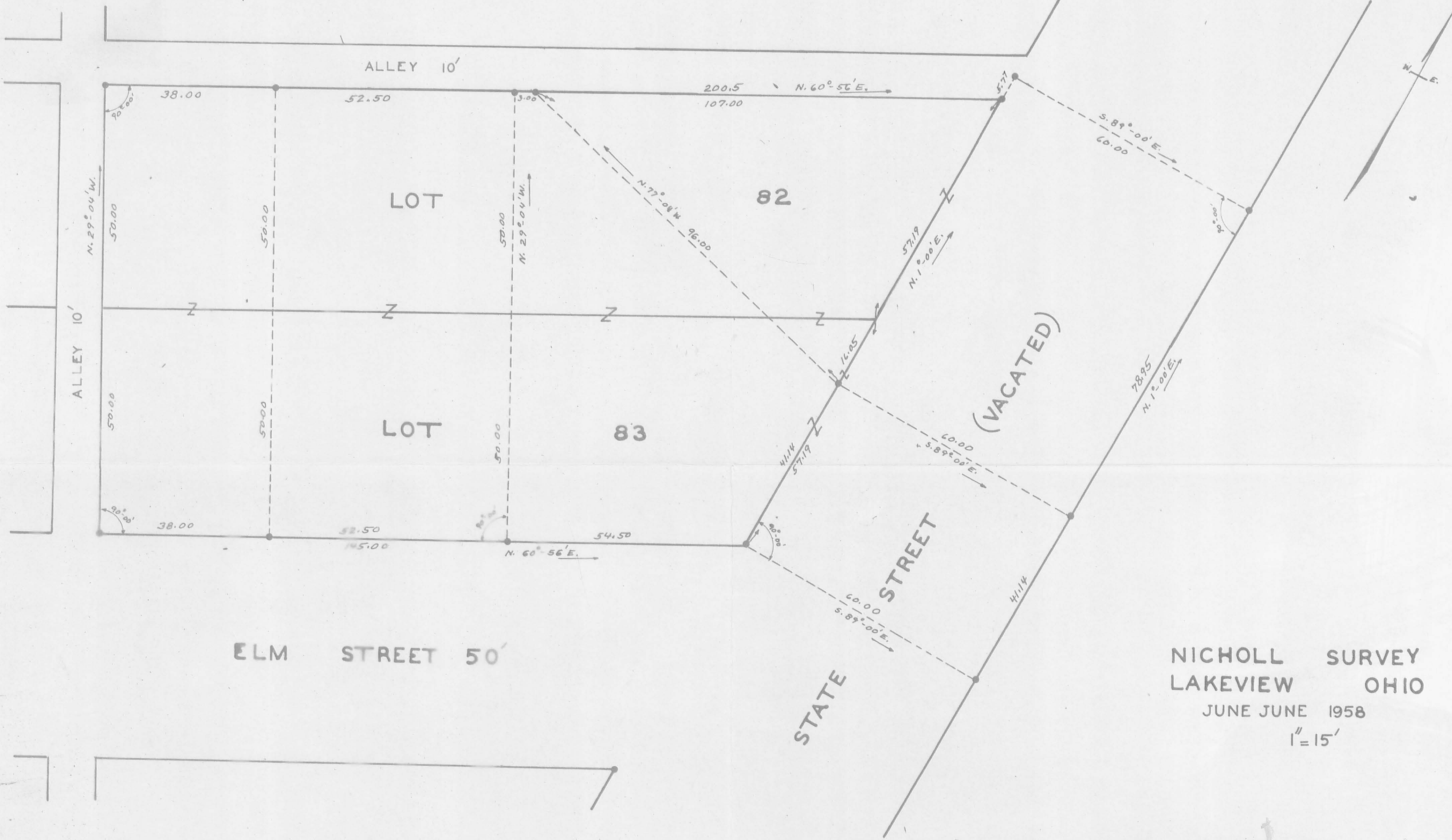
ALVIN WAGSTAFF SURVEY
Part Lots 83 & 82
Stephenson's Addition
Lakeview, Ohio

The following described real estate situated in the Village of Lakeview, Stokes Township, Logan County, Ohio, and being part of Lots 82 and 83 of Stephenson's Addition to said Village and more particularly described as follows:

Beginning at a stake at the Northeast corner of said Lot #82; thence with the West line of State Street (now vacated) N. 1°-00' E. 5.77 feet to a stake; thence S. 89°-00' E. 60.0 feet to a stake in the East line of said State Street; thence with said East line S. 1°-00' W. 78.95 feet to a stake; thence N. 89°-00' W. 60.0 to a stake in the West line of said State Street; thence N. 77°-04' W. 94.55 feet to a stake in the North line of said Lot #82; thence with said North line N. 60°-56' E. 107.0 feet to the place of beginning.

Containing 0.19 of an acre more or less.





NICHOLL SURVEY
 LAKEVIEW OHIO

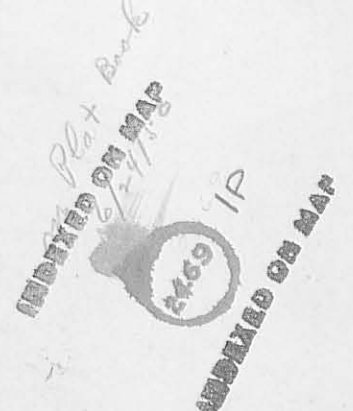
JUNE JUNE 1958

1" = 15'

• INDICATES IRONS
 FILE FW-219



See Logan County Engineer's File RA-1993
 Vacated Street to become part of the
 adjoining lot at right angles to street.



Lot 82 & 83
 Stephenson's Add.
 Lakeview, Ohio



1/2" Pipe
 Found
 N.W. Cor.
 Lot # 80

1" Sq. Iron
 bar Found

10' Alley

82

H = Hubs Set

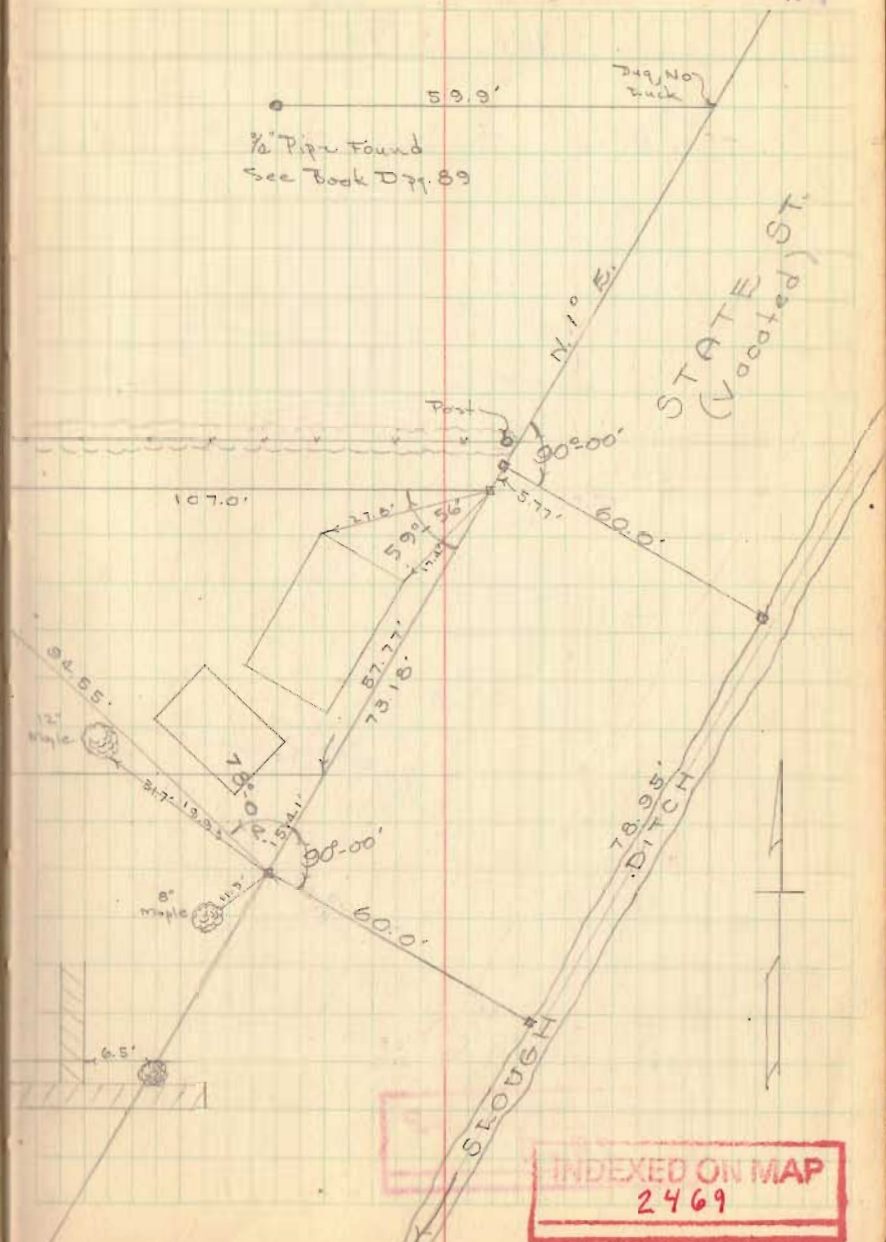
83

ELM ST.

D. Dodson
 C. Nichols

Oct. 30, 1954
 32°

27



59.9'
 1/2" Pipe Found
 See Book Dpg. 89

Dug No
 Luck

STATE ST.
 (Vandalized)

N 10° E.

90°-00'

107.0'

42°-00'

Post

15.77' 60.0'

27.6'

59°-56'

87.77'

73.18'

84.55'

78°-00'

87.13.0'

90°-00'

8° Maple

60.0'

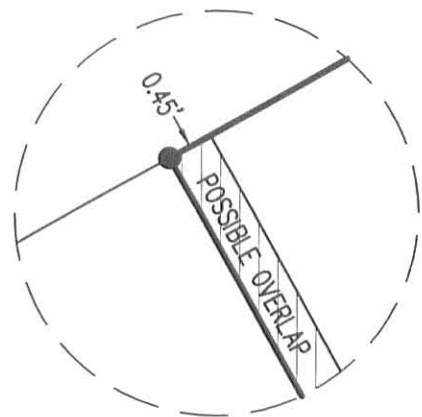
78.95' DITCH

HEDGES ST.

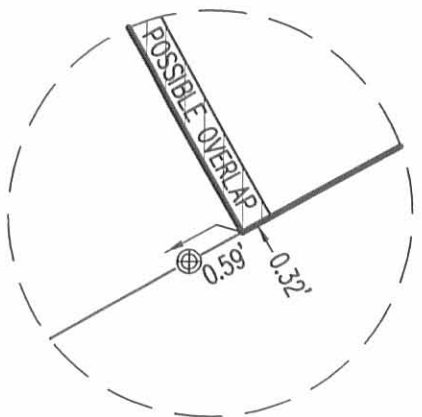
6.5'

INDEXED ON MAP
 2469

REV'D 8-4-11 SMY OK

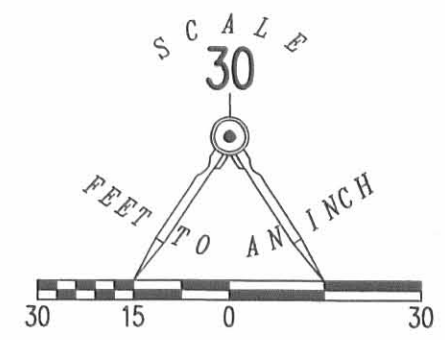
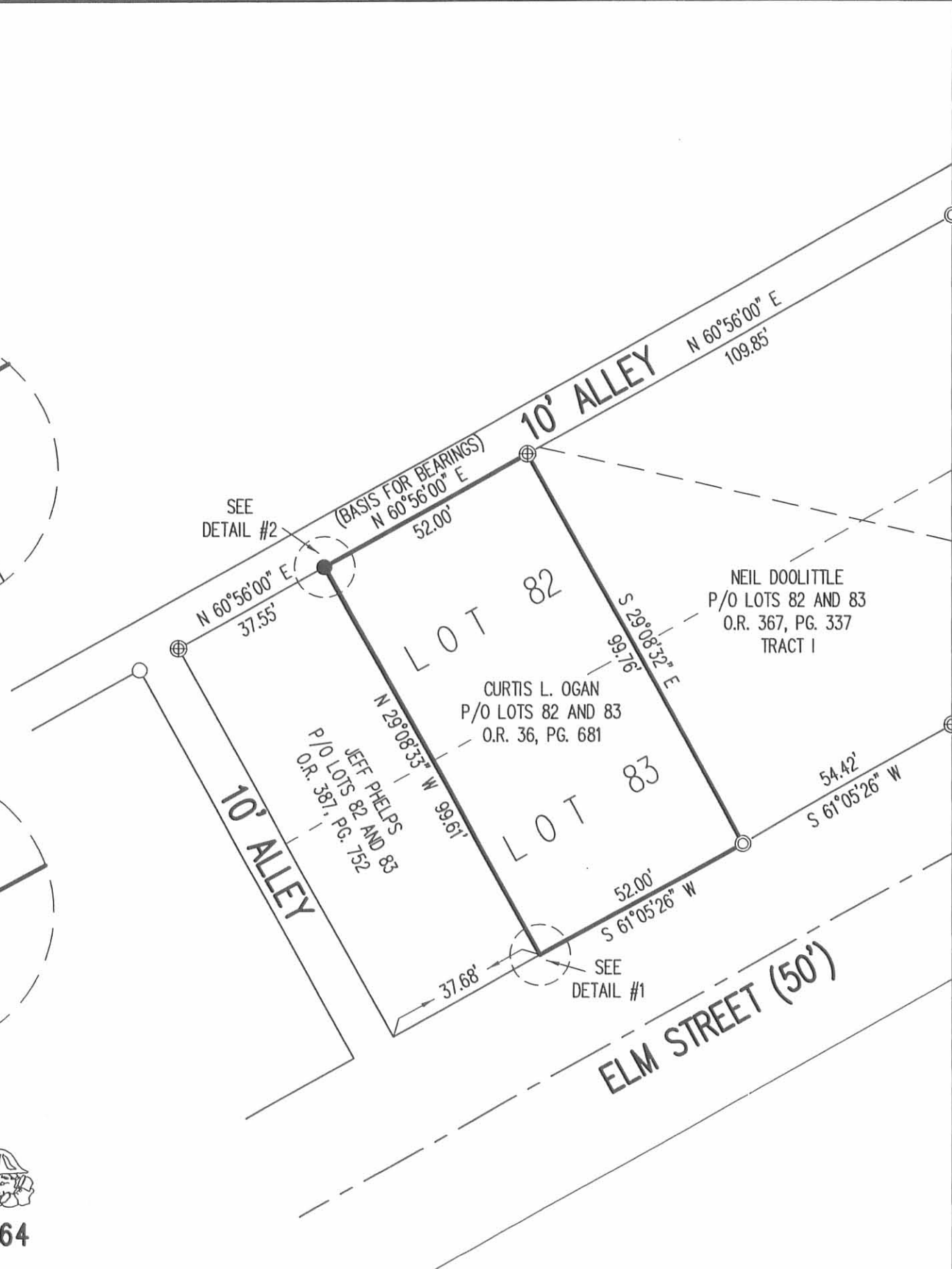


DETAIL #2
NOT TO SCALE



DETAIL #1
NOT TO SCALE

2 WORKING DAYS
BEFORE YOU DIG
CALL TOLL FREE **800-362-2764**
OHIO UTILITIES PROTECTION SERVICE



- LEGEND:
- ⊕ 1 INCH IRON PIPE FOUND
 - ⊙ 1/2 INCH IRON PIPE FOUND
 - 5/8 INCH IRON ROD FOUND
 - 5/8 INCH IRON ROD SET WITH PLASTIC I.D. CAP STAMPED "LSM 7437"

**RETRACEMENT SURVEY OF THE
CURTIS L. OGAN
PARTS OF LOT 82 AND 83
STEPHENSON'S ADDITION
PLAT CABINET A, SLIDE 121
OFFICIAL RECORD 36, PAGE 681
VILLAGE OF LAKEVIEW
STOKES TOWNSHIP
LOGAN COUNTY, OHIO**

SURVEYED BY:

William K. Bruce

WILLIAM K. BRUCE
PROFESSIONAL SURVEYOR 7437
AUGUST 2, 2011

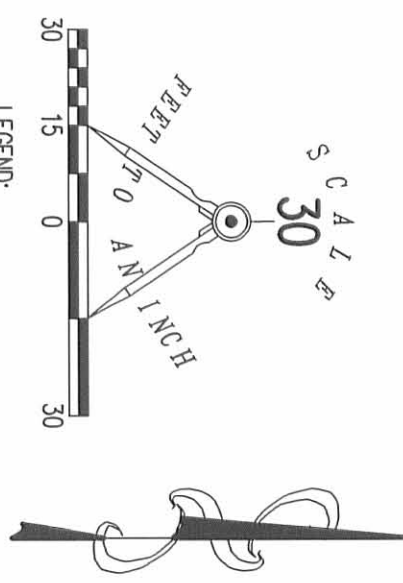


COPYRIGHT 2011 BY:
LEE SURVEYING & MAPPING CO., INC.
117 North Madriver Street
BELLEFONTAINE, OHIO 43311
(937) 593-7335
surveys@lsminc.us

KSS D0711 51840711 L-5184-3

INDEXED ON MAP
2469 2P

REV'D 10-2011 SWW



**RETRACEMENT SURVEY OF THE
CURTIS L. OGAN
PARTS OF LOT 82 AND 83
STEPHENSON'S ADDITION
PLAT CABINET A, SLIDE 121
OFFICIAL RECORD 36, PAGE 681
VILLAGE OF LAKEVIEW
STOKES TOWNSHIP
LOGAN COUNTY, OHIO**

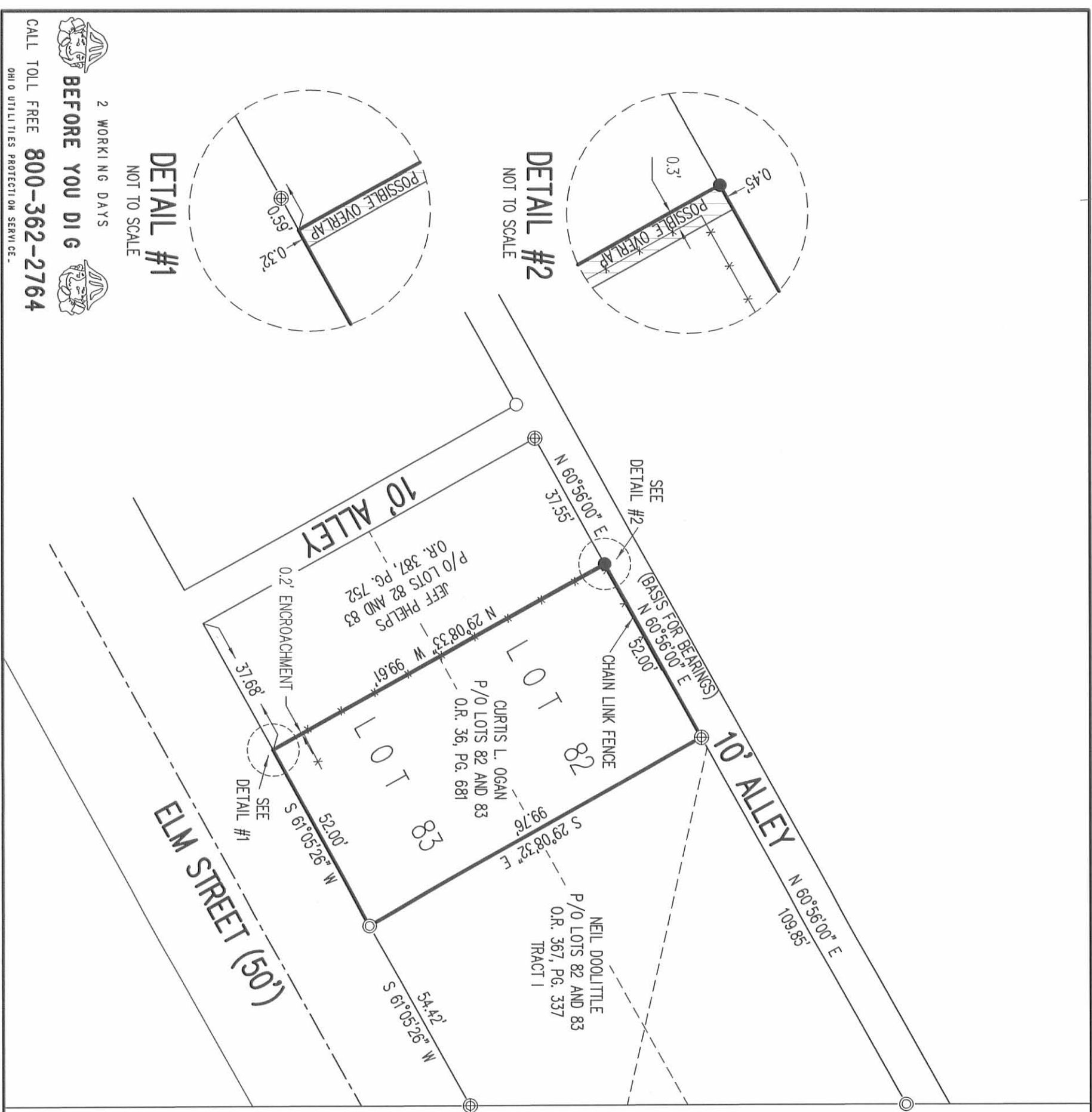
SURVEYED BY:

William K. Bruce
 WILLIAM K. BRUCE
 PROFESSIONAL SURVEYOR 7437
 OCTOBER 3, 2011 (ADD FENCE)
 AUGUST 2, 2011



COPYRIGHT 2011 BY:
LEE SURVEYING & MAPPING CO., INC.
 117 North Madriver Street
 BELLEFONTAINE, OHIO 43311
 (937) 593-7335
 surveys@lsminc.us
 KSR/ADW D1011 L-5184-3

INDEXED ON MAP
 2469
 3P



DETAIL #1
 NOT TO SCALE

DETAIL #2
 NOT TO SCALE

2 WORKING DAYS
BEFORE YOU DIG

CALL TOLL FREE **800-362-2764**
 OHIO UTILITIES PROTECTION SERVICE