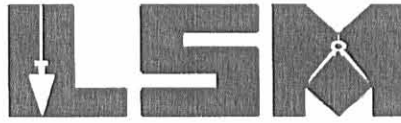


# Lee Surveying and Mapping Co., Inc.

Land Surveys • Topography • Subdivisions • Construction Layout

117 N. Madriver St.  
Bellefontaine OH 43311



Phone: (937) 593-7335  
Fax: (937) 593-7444

## HEINTZ 0.240 ACRE TRACT

Lying in Section 27, Town 6, Range 8, Village of Lakeview, Stokes Township, Logan County, Ohio.

Being all of the Claude E. Heintz part of original Outlot 1 as deeded and described in Official Record 483, Page 783 of the Logan County Records of Deeds and being more particularly described as follows:

Beginning at a 5/8 inch iron rod set at the most easterly corner of Outlot 1 of the Village of Lakeview on the southwesterly right-of-way of Main Street (60 feet wide) and the northwesterly line of Hoon-Beck Alley (14 feet wide).

THENCE, with the northwesterly line of Hoon-Beck Alley and the southeast lines of the Francis L. Swartz 0.333 acre tract (Vol. 338, Pg. 362) and the Claude E. Heintz part of original Outlot 1 No. 1 (O.R. 306, Pg. 105), S 59°-59'-18" W, a distance of 299.95 feet to a 5/8 inch iron rod set at THE TRUE POINT OF BEGINNING.

THENCE, with the northwesterly line of Hoon-Beck Alley, S 59°-59'-18" W, a distance of 82.04 feet to a 5/8 inch iron rod set.

THENCE, with the north line of Hoon-Beck Alley, N 89°-54'-00" W, a distance of 33.50 feet to a 5/8 inch iron rod set.

THENCE, with the easterly line of the Board of Education Lakeview Special School District's part of Outlot No. 1 (Vol. 108, Pg. 162), N 06°-45'-00" W, a distance of 108.00 feet to a 5/8 inch iron rod set.

THENCE, with the southeasterly line of the Board of Education Lakeview Special School District's part of Outlet No. 2 (Vol. 96, Pg. 385), N 60°-01'-00" E, a distance of 67.00 feet to a 5/8 inch iron rod set.

THENCE, with the southwesterly lines of the Howard E. Holsberry 0.45 acre tract (Vol. 348, Pg. 881) and the said Heintz's part of Outlot No. 1 (O.R. 306, Pg. 105), S 30°-41'-10" E, a distance of 116.00 feet to the point of beginning.

Containing 0.240 acre.

The basis for bearings is the northwesterly line of Hoon-Beck Alley being S 59°-59'-18" W, and all other bearings are from angles and distances measured in a field survey by Lee Surveying and Mapping Co., Inc. on April 9, 2001.

Description prepared by:

Jeffrey I. Lee  
Professional Surveyor 6359  
May 3, 2001



L-3123

ORIGINAL STAMP IN GREEN



# Lee Surveying and Mapping Co., Inc.

Land Surveys • Topography • Subdivisions • Construction Layout

117 N. Madriver St.  
Bellefontaine OH 43311



Phone: (937) 593-7335  
Fax: (937) 593-7444

## HEINTZ 0.172 ACRE TRACT

Lying in Section 27, Town 6, Range 8, Village of Lakeview, Stokes Township, Logan County, Ohio.

Being all of the Claude E. Heintz part of original Outlot 1 as deeded and described in Official Record 306, Page 105 of the Logan County Records of Deeds and being more particularly described as follows:

Beginning at a 5/8 inch iron rod set at the most easterly corner of Outlot 1 of the Village of Lakeview on the southwesterly right-of-way of Main Street (60 feet wide) and the northwesterly line of Hoon-Beck Alley (14 feet wide).

THENCE, with the northwesterly line of Hoon-Beck Alley and the southeast line of the Francis L. Swartz 0.333 acre tract (Vol. 338, Pg. 362), S 59°-59'-18" W, a distance of 149.95 feet to a 5/8 inch iron rod set at THE TRUE POINT OF BEGINNING.

THENCE, with the northwesterly line of Hoon-Beck Alley, S 59°-59'-18" W, a distance of 150.00 feet to a 5/8 inch iron rod set.

THENCE, with the east line of the Claude E. Heintz part of Outlot 1 (O.R. 483, Pg. 783), N 30°-41'-10" W, a distance of 50.00 feet to a 5/8 inch iron rod set at the southwest corner of the Howard E. Holsberry 0.45 acre tract (Vol. 348, Pg. 881).

THENCE, with the southeasterly line of the said 0.45 acre tract, N 59°-59'-18" E, a distance of 150.00 feet to a 5/8 inch iron rod set.

THENCE, with the southwesterly line of the aforesaid 0.333 acre tract, S 30°-41'-10" E, a distance of 50.00 feet to the point of beginning.

Containing 0.172 acre.

The basis for bearings is the northwesterly line of Hoon-Beck Alley being S 59°-59'-18" W, and all other bearings are from angles and distances measured in a field survey by Lee Surveying and Mapping Co., Inc. on April 9, 2001.

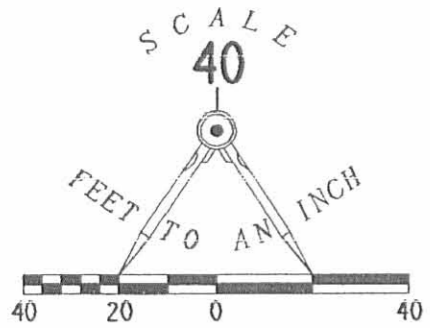
Description prepared by:

Jeffrey I. Lee  
Professional Surveyor 6359  
May 3, 2001



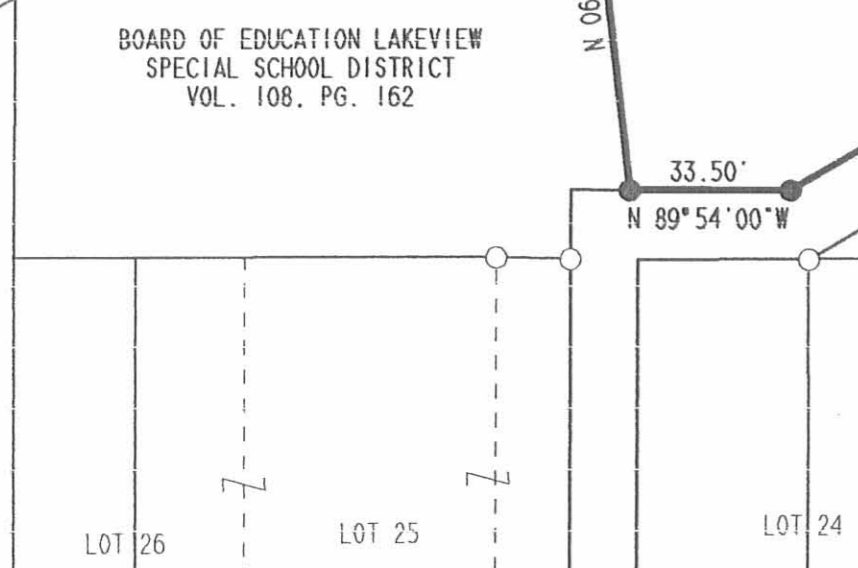
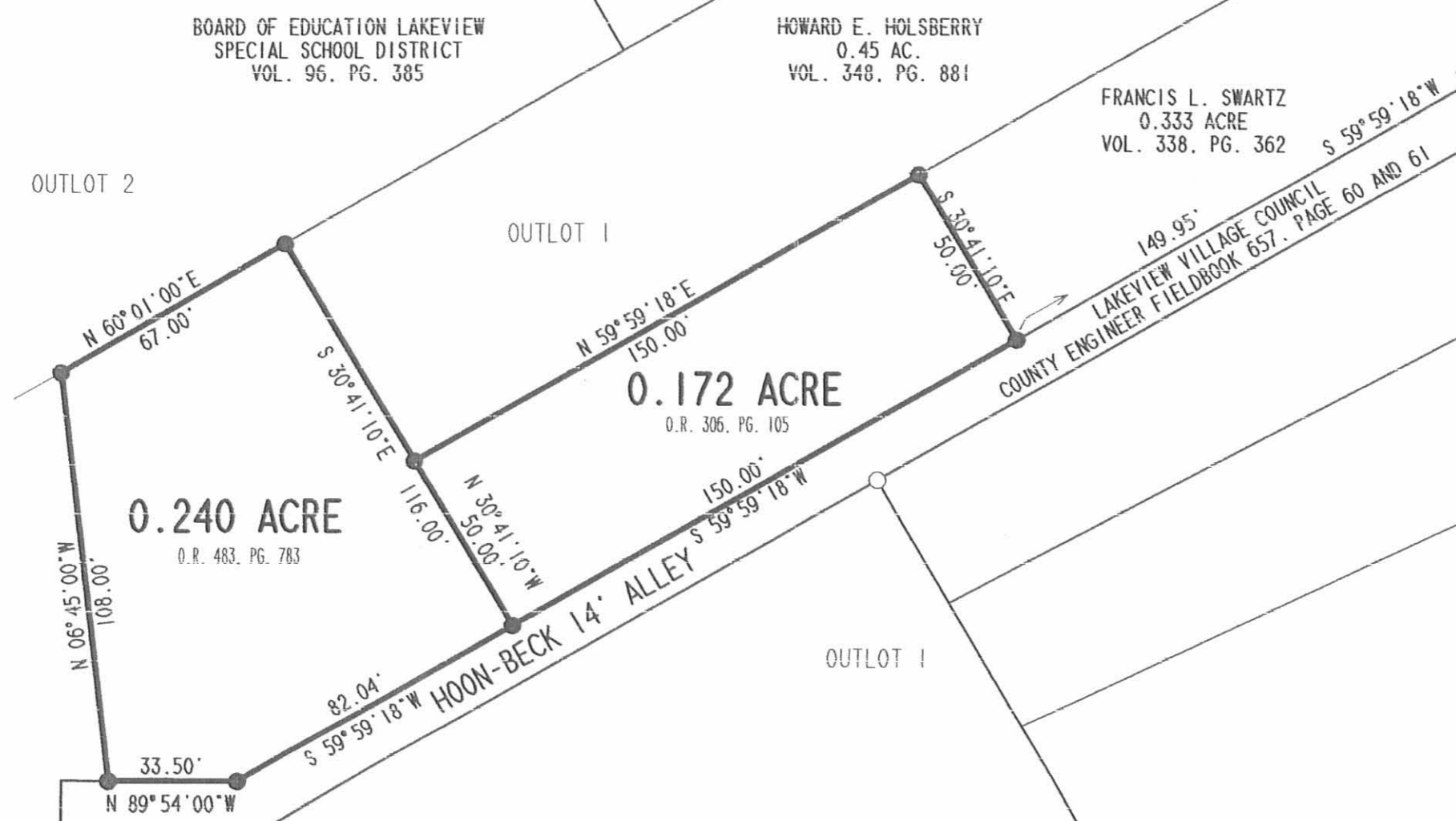
ORIGINAL STAMP IN GREEN L-3123

INDEXED ON MAP  
9368 1D-2



- LEGEND**
- 5/8" IRON ROD SET
  - 5/8" IRON ROD FOUND

REFERENCE LOGAN COUNTY ENGINEER  
 FIELD BOOK 493, PG. 20-22  
 FIELD BOOK 657, PG. 60, 61  
 R-3440, R-7532



RETRACEMENT SURVEY OF THE  
 CLAUDE E. HEINTZ AND SYLVIA HEINTZ  
 PART OF ORIGINAL OUTLOT 1  
 OFFICIAL RECORD 306, PAGE 105  
 AND THE CLAUDE E. HEINTZ  
 PART OF ORIGINAL OUTLOT 1  
 OFFICIAL RECORD 483, PAGE 783  
 SECTION 27, TOWN 6, RANGE 8  
 VILLAGE OF LAKEVIEW  
 STOKES TOWNSHIP  
 LOGAN COUNTY, OHIO

SURVEYED BY:

JEFFREY I. LEE  
 PROFESSIONAL SURVEYOR 6359  
 APRIL 9, 2001



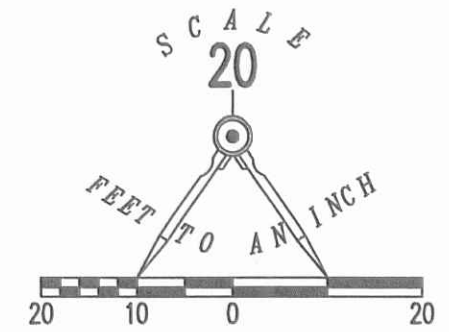
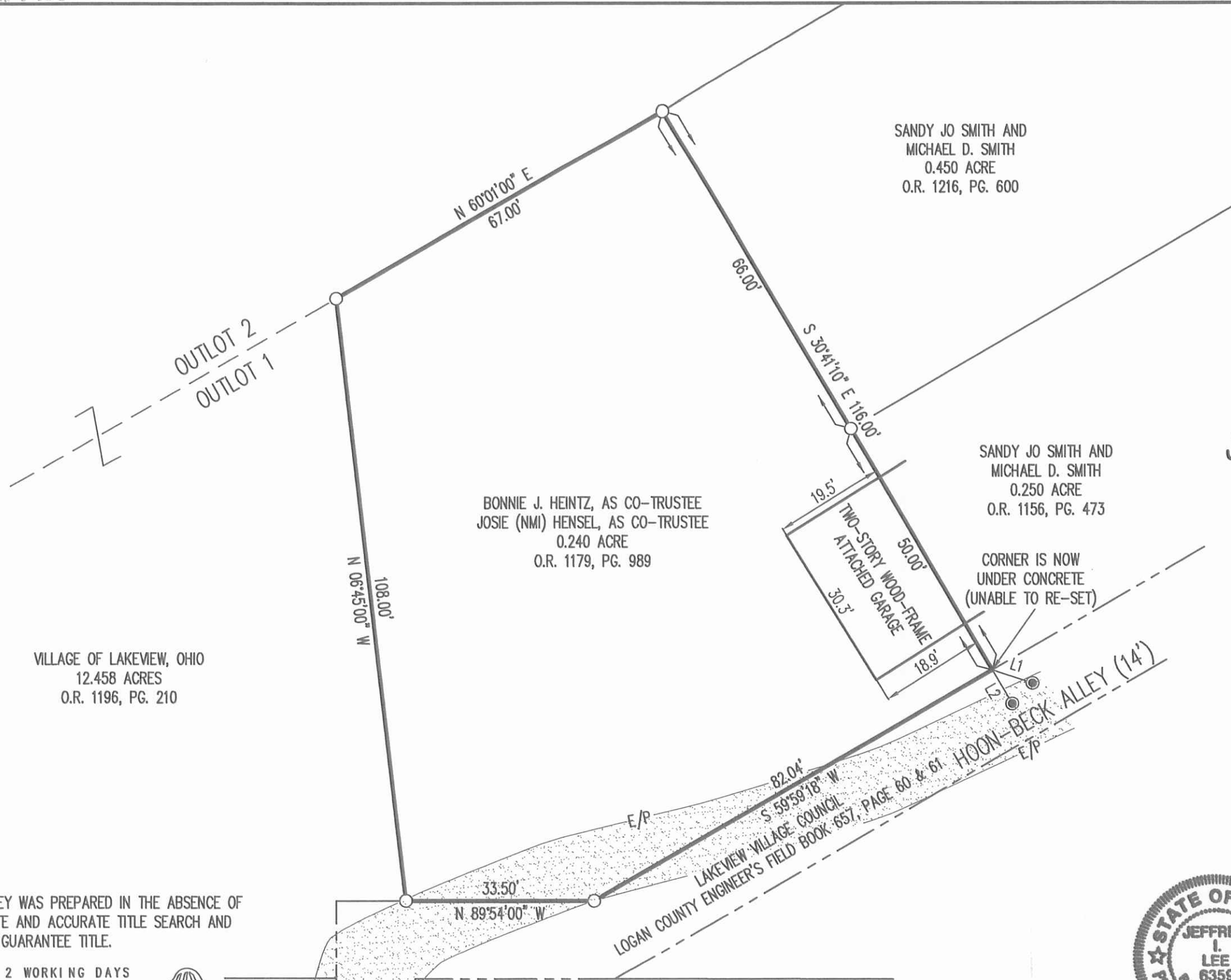
COPYRIGHT 2001 BY:  
 LEE SURVEYING & MAPPING CO., INC.  
 117 North Madriver Street  
 BELLEFONTAINE, OHIO 43311  
 (937) 593-7335

2 WORKING DAYS  
**BEFORE YOU DIG**  
 CALL TOLL FREE **800-362-2764**  
 OHIO UTILITIES PROTECTION SERVICE.

INDEXED ON MAP  
 9308 IP

D396 HEINTZI HEINTZ.DAT L-3123-3

2-17-17  
**APPROVED**



LEGEND:  
 ○ 5/8 INCH IRON ROD FOUND  
 ● MAG NAIL SET

**RETRACEMENT SURVEY OF THE  
 BONNIE J. HEINTZ, AS CO-TRUSTEE  
 JOSIE (NMI) HENSEL, AS CO-TRUSTEE  
 0.240 ACRE TRACT  
 PART OF OUTLOT NO. 1  
 LAKEVIEW ORIGINAL PLAT  
 PLAT CABINET A, SLIDE 121  
 OFFICIAL RECORD 1179, PAGE 989  
 SECTION 27, TOWN 6, RANGE 8  
 VILLAGE OF LAKEVIEW  
 STOKES TOWNSHIP  
 LOGAN COUNTY, OHIO**

SURVEYED BY:  
  
 JEFFREY I. LEE  
 PROFESSIONAL SURVEYOR 6359  
 FEBRUARY 9, 2017



COPYRIGHT 2017 BY:  
**LEE SURVEYING & MAPPING CO., INC.**  
 117 North Madriver Street  
 BELLEFONTAINE, OHIO 43311  
 (937) 593-7335  
 WWW.LSMINC.US  
 surveys@lsminc.us

LINE	BEARING	DISTANCE
L1	S 71°55'49" E	7.56'
L2	S 30°41'10" E	7.00'

THIS SURVEY WAS PREPARED IN THE ABSENCE OF A COMPLETE AND ACCURATE TITLE SEARCH AND DOES NOT GUARANTEE TITLE.

2 WORKING DAYS  
**BEFORE YOU DIG**  
 CALL TOLL FREE **800-362-2764**  
 OHIO UTILITIES PROTECTION SERVICE.

ORIGINAL STAMP IN GREEN

KSS D0217 31230217 L-3123-3

INDEXED ON MAP  
 9360 2P