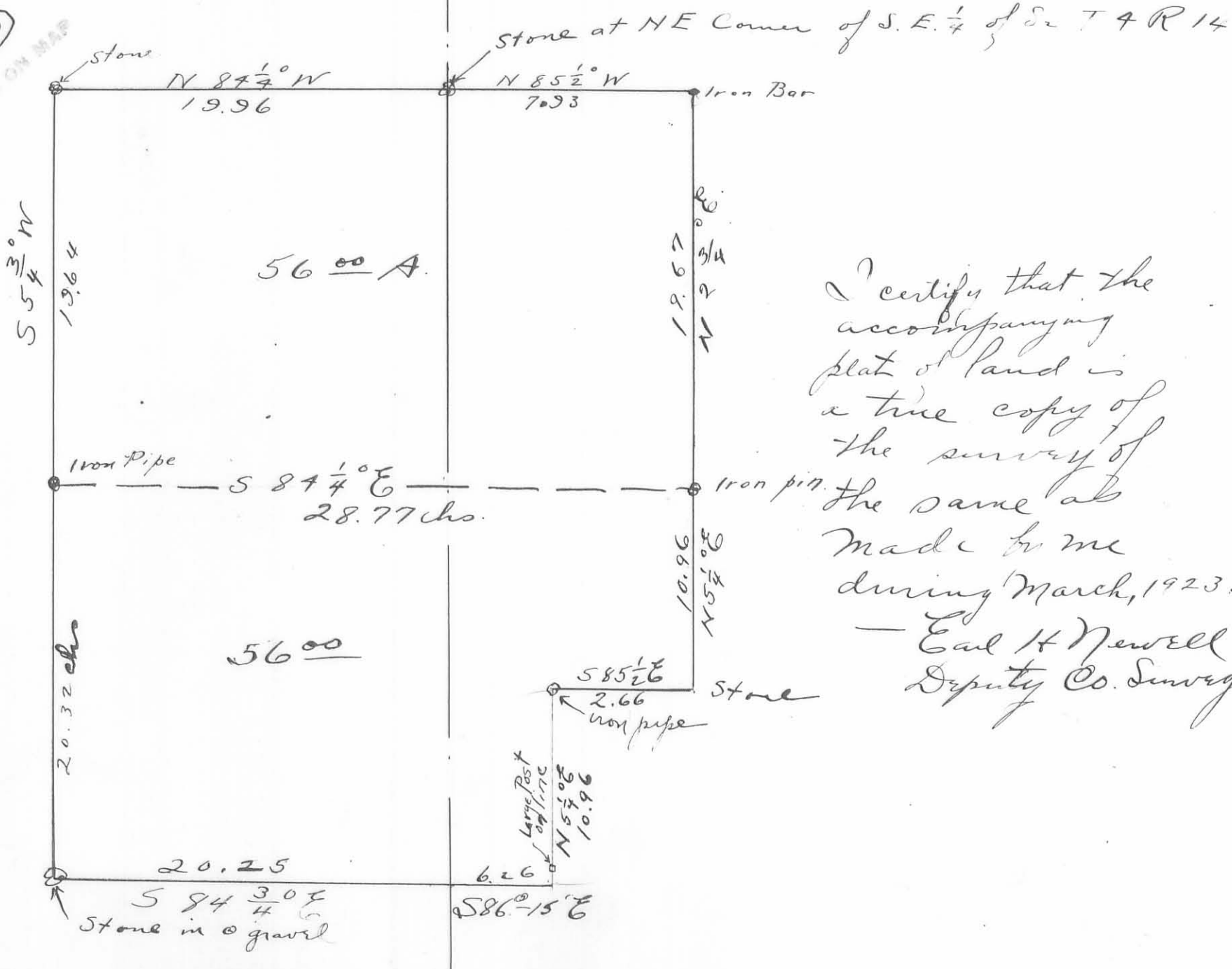


Survey for Lois E Detrick  
in  
Liberty Tp Logan Co Ohio  
in Sections # 2 and  
# 32 in T4R14

250

PRINTED ON MAP



I certify that the accompanying plat of land is a true copy of the survey of the same as made to me during March, 1923.  
— Earl H Newell  
Deputy Co. Surveyor.