

Received 12-6-91

OK (C.R.)

SMITH SURVEY
S. 34, T. 5, R. 13, B.M.R.S.
LIBERTY TOWNSHIP
LOGAN COUNTY, OHIO

The following described real estate situated in the State of Ohio, County of Logan, Township of Liberty, being part of Section 34, Town 5, Range 13, B.M.R.S. and more particularly described as follows:

Beginning at a railroad spike set at the intersection of the centerline of T.R. 188 and the original centerline of C.R. 191.

THENCE, with the center of T.R. 188, N.4°26'48"E. 613.35 feet to a railroad spike set.

THENCE, with an existing fence line, S.86°08'58"E. 660.41 feet to a wood corner post found in the west line of the South Union Mennonite Church's 2.00 acre tract, D.B. 348, Page 182.

THENCE, with the west line of said Church tract, also an existing fence line, S.6°26'45"W. 251.00 feet to a railroad spike set in the center of S.R. 508 (original centerline of C.R. 191).

THENCE, with the original centerline of C.R. 191, S.64°54'00"W. 749.03 feet to the point of beginning.

Containing 6.488 acres, more or less, of which 0.922 acres are contained within road right-of-way.

The above described 6.488 acre tract being part of Karl Z. and Rebecca L. Smith's 34.57 acre tract as described in D.B. 356, Page 613.

Basis for bearing: Original centerline of C.R. 191 (S.64°54'00"W.).

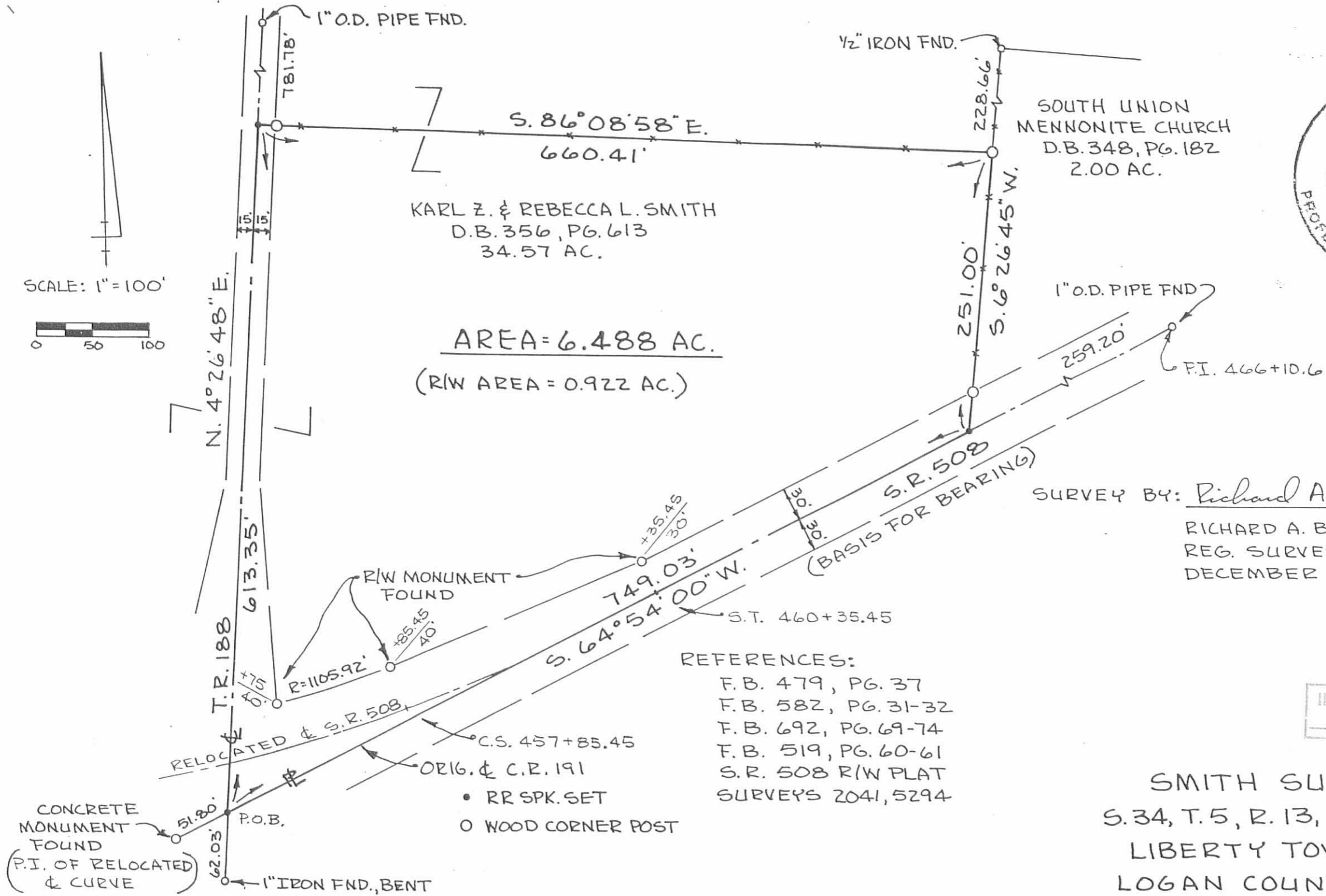
This description prepared from an actual field survey.

Prepared By: Richard A. Bruce
Richard A. Bruce, P.S.
Reg. Surveyor 6993
December 3, 1991



INDEXED ON MAP
1387 1D

SCALE: 1" = 100'



KARL Z. & REBECCA L. SMITH
D.B. 356, PG. 613
34.57 AC.

SOUTH UNION
Mennonite Church
D.B. 348, PG. 182
2.00 AC.

AREA = 6.488 AC.
(R/W AREA = 0.922 AC.)

- REFERENCES:
- F.B. 479, PG. 37
 - F.B. 582, PG. 31-32
 - F.B. 692, PG. 69-74
 - F.B. 519, PG. 60-61
 - S.R. 508 R/W PLAT SURVEYS 2041, 5294

- RR SPK. SET
- WOOD CORNER POST



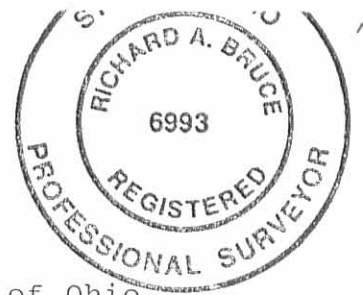
SURVEY BY: Richard A. Bruce
RICHARD A. BRUCE, P.S.
REG. SURVEYOR 6993
DECEMBER 3, 1991

INDEXED ON MAP
1387 1P

SMITH SURVEY
S. 34, T. 5, R. 13, B.M.R.S.
LIBERTY TOWNSHIP
LOGAN COUNTY, OHIO

Received 3-24-93

OK (C.R.)



SMITH SURVEY
S. 34 & S. 35, T. 5, R. 13, B.M.R.S.
LIBERTY TOWNSHIP
LOGAN COUNTY, OHIO

The following described real estate situated in the State of Ohio, County of Logan, Township of Liberty, being part of the Northeast Quarter of Section 34, Town 5, Range 13 and the Southeast Quarter of Section 35, Town 5, Range 13, B.M.R.S. and more particularly described as follows:

Commencing at a railroad spike found at the intersection of the centerline of T.R. 188 and the original centerline of C.R. 191 (S.R. 508).

THENCE, with the center of T.R. 188, N.4⁰26'48"E. 613.35 feet to a railroad spike found, said railroad spike being the TRUE POINT OF BEGINNING of this description.

THENCE, continuing with the center of T.R. 188, N.4⁰26'48"E. 781.78 feet to a 1 inch pipe found marking the southwest corner of Joe A. and Belinda Oelker's 126.71 acre tract, D.B. 407, Page 490.

THENCE, with the south line of said Oelker and the south line of William R. and June Hollinger's 3.33 acre tract, D.B. 361, Page 658, S.83⁰43'36"E. 873.12 feet to a 3/4 inch iron bar found marking the northwest corner of John A. and Bonnie J. McQueen's 5.00 acre tract, O.R. 59, Page 113.

THENCE, with the west line of said McQueen, S.4⁰52'32"W. 525.29 feet to a 3/4 inch iron bar found in the north line of the South Union Mennonite Church's 2.00 acre tract, D.B. 348, Page 182.

THENCE, with the north line of said Church tract, N.83⁰38'04"W. 200.50 feet to a 1/2 inch iron bar found marking the northwest corner of said Church tract.

THENCE, with the west line of said Church tract, S.6⁰26'45"W. 228.66 feet to a wood corner post marking the northeast corner of Rebecca L. Smith's 6.488 acre tract, O.R. 183, Page 594.

THENCE, with the north line of said Smith, N.86⁰08'58"W. 660.41 feet to the point of beginning.

Containing 14.197 acres, more or less, of which 0.269 acres are contained within road right-of-way. 12.639 acres (0.233 Ac. R/W) being in Section 35 and 1.558 acres (0.036 Ac. R/W) being in Section 34.

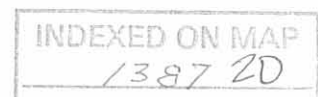
The above described 14.197 acre tract being part of Karl Z. and Rebecca L. Smith's 35.16 acre tract (Section 35) and 28.082 acre tract (Section 34) as described in D.B. 356, Page 613.

Basis for bearing: Original centerline of C.R. 191 (N.64⁰54'00"E.).

This description prepared from an actual field survey.

Prepared By: Richard A. Bruce

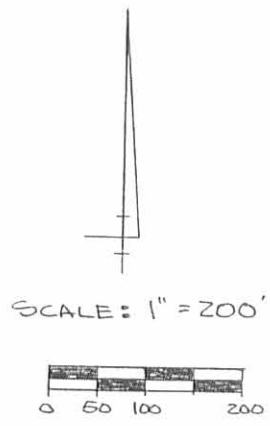
Richard A. Bruce, P.S.
Reg. Surveyor 6993
March 22, 1993



JOE A. OELKER et ux
126.71 AC.
D.B. 407, PG. 490

WILLIAM R. HOLLINGER et ux
3.30 AC.
D.B. 361, PG. 658

REFERENCES:
F.B. 479, PG. 37
F.B. 582, PG. 31-32
F.B. 692, PG. 69-74
F.B. 519, PG. 60-61
S.P. 508 E/W PLAT
SURVEYS-2041, 5294,
3571, 6202

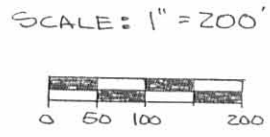


(AREA WITHIN E/W = 0.269 AC.)
(SEC. 34 = 0.036, SEC. 35 = 0.233)

KARL Z. SMITH et ux
35.16 AC.
D.B. 356, PG. 613

JOHN A. McQUEEN et ux
5.00 AC.
O.R. 59, PG. 113

TOTAL AREA = 14.197 AC.



SEC. 35
SEC. 34

KARL Z. SMITH et ux
28.082 AC
D.B. 356, PG. 613

N. 4° 26' 48" E.
781.78'

(12.639 AC)

1/2" IRON FND

525.29'
S. 4° 52' 32" W.

3/4" IRON FND.

N. 83° 38' 04" W. - 200.50'

T. 5 R. 13

(1.558 AC)

SOUTH UNION
MENNONITE CHURCH

2.00 AC.
D.B. 348, PG. 182

SURVEY BY:
Richard A. Bruce
RICHARD A. BRUCE, P.S.
REG. SURVEYOR 6993
MARCH 22, 1993

RR SPK FND

T. R. 188 - 30' E/W
613.35'

REBECCA L. SMITH
6.488 AC.
O.R. 183, PG. 594

WOOD
POST

228.66'
S. 6° 26' 45" W.

N. 86° 08' 58" W.
660.41'

N. 64° 54' 00" E.
(BASIS FOR BEARING)

SMITH SURVEY
S. 34, T. 5, R. 13 & S. 35 T. 5 R. 13
B.M. R.S.
LIBERTY TOWNSHIP
LOGAN COUNTY, OHIO

CONC. MON.
FND

RR SPK FND.
ORIGINAL & C.R. 191 (NOW S.P. 508)

INDEXED ON MAP
1387 2P



Baylor Run from 1886

Jefferson Knipp Affin 2 days

C.R. Vannester } 1 day
 } from

Daniel Dour } 1 day

Leg. C. Fishbough from 2 days

Line A Start at Stone cor = Fongytha

9.2 S Stone on head of line = line 34

12.00 or Oak 40"

19.15 at 7 cor = Baylor

with see page 31

40.22 planted stone = Fishbough & Baylor

see page 32

Line B Start at 8 cor = Baylor

d. 3' 10' W with pub road ^{by} on linesee **BURK C Page 172**

(1397)

INDEXED ON MAP

Line C Start at 10 cor = Baylor in

see 33 = Geo Kisses 60 ft and in S
^{8" x 12" x 14" ang. Lt}

Line John Prater. Planted stone, etc

with Mild cherry 2' S 74 1/2° 37 links

Also saw apple 1st S 10 E 9 1/4 "

Also Elm 3' S 77 1/4 or 16 1/4 "

S 10 or

4.45 pass stone for monument Petty

25.30 at Baylor S E L in W line of
J.K. Mc Donaldwith or. Cherry old 24" S 60 1/2 E 19 1/2 links
all cherry at stake

Line D, Start at 33 = Baylor

or S 6 3/4 W, 12.85 end of public

stake = set stake by Jones

Line E Start cent pike ← Baylor
 and Mr. Donald
 With W. L. & Kelly pike
 N 14 1/2 W 21.93 old cent pike
 old pit or D. stump 24" East 122 links

Line F with cent W. L. & B Pike
 from last cor above N 14 1/2 W
 5.45 ch set stake 2 links S of unit gravel
 ← Baylor and Jeff Kanipe

Line G Start at last above ←
 with line Baylor and Jeff Kanipe
 S 84 1/4 E Random S 87 1/2 E 0.2
 at 7 ch fall 23 links S of found fence line
 at 7 ch set or 25 links
 12.17 pass line Kanipe & John Porter

20.41 ch stone as set for ← see link c
 page 27
 Fall 15 links north of stone
 ran too much south 10 links

Line H. Sugar pike at N 1/2 Dec 34
 set misc head 12" x 8" x 8" on top of old stone
 find old & stone. one head long stone
 near East
 old stone Mary Keasill tombstone S 25 1/2 E 113 links
 N 10. 36" old pit N 43 1/2 W 60 1/2 links
 N 1/2 found. D. Union church N 50 1/4 W 24 1/2 links
 Start at above Dec ← stone
 S 3 1/2 W = S 3 1/2 W CC S 3 W
 stone on top head 10" x 10" x 5" at
 4 ch set ← in or line of yard.
 pit or D. line 30 link line S 8 1/2 W 8.15 links
 N 10. S 86 5/8 W or 85 1/2 links
 set gravel on pike east 23 links
 Line I. Start at stone 4.14 line H.
 S 17 1/2 W
 see more cent pike

1387

INDEXED ON MAP

Fishberg (own Daniel Jodan) & Bayler
 Out W. O. 28" S 65 1/4 W 6 1/2 links
 also Or O 63" or 15 1/2 or 59 "
 planted pole 32 links or off x

Line M. Start at v on cut ^{grade out} Bayler
 S 82 1/2 E with south side pole
 to 16.00 pass cut pole thence on
 south side pole

22.76 Stone < Foray the ^{of} Bayler
 one line or for one

Line N. Start at Stone N.E. < Dec 34
 S 63 1/4 W with road. 0 1/2 98

0.50.500 pass cut road pass North
 213.29 planted stone < Foray the ^{of} Bayler
 Out Elk ^{to} cut 14" or 73 1/2 E 4 1/2 links
 also Elk ^{to} cut 14" or 63 1/2 E 7 1/2 "
 11 cut grass on pole S 3 W 37 links

(1387)
 INDEXED ON MAP

Line O. Start at Stone N.E. < Dec 34.
 S 44 1/2 W with line S 3 W. C.C.
 35.00 & dist.

40.58 & cut pole in one line
 51.19 & old Mr. Beth one stone found
 Out Wild cherry 10" or 1/2 E 2 1/2 3/4 links

Line P. Start at v Old Mr. Beth <
 or 86 1/2 W
 748 cut pole planted my hand 20 x 15 x 9
 note thick 18" or 20 E 2.06 links
 also Or O. 32" S 9 E 15 1/2 links

43.07 Stone S.E. < Bayler S.E. < Fishberg
 one line S.W.

Line Q. Start at stone cut pole 7 1/2 x 9
 S 3 1/2 W with pole cut
 12.05 one line &

1371. Start at top of pipe post

Line P. with pipe sent

S 79 E

11.86. post sent to top of P. pipe

Line J. with cut to top of P. pipe

N 16 W

2.14 7 in cut - pipe to Baylor & Pitty

with sent 2 1/2" pipe for end in cut pipe

N 14 1/2 W 12 1/2 links

July 24-87

Line J. Start at cut pipe
and see line N 3 E

13.88. post to Baylor & Pitty in
see line

with wild cherry 10 1/2

N 10 W 4 5 30 W 10

40.58
26.70
13.88
9.74
4.14

Line H.

Start at stake 2 in see line J line S.

S 26 3/4 W

10 in line at 13.88

Line V

Start at stem Dec 2 in see 34

S 63 1/4 W

13.29. post to Baylor & Pitty

see line 38 S 23 W 80 links

10 W. Oak 2 1/2 S 50 E - 11 1/2 links

Line M. Start at stake 2 in see

see line

23.15. Stake for 2 in see line

4 1/2 W 10 W

23 / 4.00 1.7

2.3

1.70

7.00

3.4

1.66

2.670

1387
INDEXED ON MAP

Baylors Linn Nov 4-88

Course line from S.H. \angle to \angle on road
 being \angle Baylor & Petty div. or 6 S $\frac{1}{4}$ E

Line A. Start at T in put road \angle R & P.
 thence on dir line S $19\frac{1}{4}$ E Ranch
 15.87 ch Fall 9 links R = West of \angle T
 to S $19\frac{1}{2}$ E

Line B. Start at T S 2 line A.
 with dir line or 89 $\frac{1}{2}$ W 8.23 ch to \angle
 with \angle cent N. To E of pike
 N. O. 30" S $7\frac{1}{2}$ E 39 links
 E of N. O. 36" or 16 $\frac{1}{2}$ W 156 "
 some 38d nails in pike at \angle

Line C. start \angle cent pike E of line B
 with pike S 30 E 12.34 ch
 stone in center N. To E of pike at N.E
 \angle Fishbaugh S S E \angle Petty land

Liberty Twp.

1387

401

INDEXED ON MAP

Survey of l.a. for Trustees

South Union Ch. - 2 mi. N of W. Liberty.

Found stone in pipe at NW $\frac{1}{4}$ Sec. 28
 from old wit: - 36" W.O. N49W - 6 1/2 lbs
 new wit: 44" W.O. N47 1/4 W, 60 1/2 lbs.
 11" Soft Maple, S84 1/4 W, 107 lbs
 placed pos. tile also set blue limestone on
 top (Stone 6" below surface)

found stone SW $\frac{1}{4}$ Forester.
 N. line run bet. these stones
 S 64 1/2 W.
 Note! - This line runs with S. edge of
 gravel, or from 5' to 6' S. of cent road.

S 64 1/2 W

at 3.86 set boulder & pos tile
 at SW $\frac{1}{4}$ Ch. Lot
 Wit 28" White Oak, N81 1/4 E, 96 lbs

Cse. W. line Ch. Lot S 43 1/4 W

Note! - This dist over-runs deed, but
 this fence has been on present line ever since
 ch. lot was purchased in 1876, (undisputed)

1387

June 22 - 09

E. line -
 start stone at Sec. 4
 - S 4 1/4 W, at 4 1/4 stone with x at an
 angle in Fisher line.
 at 3.96 set stone & ~~small~~ tile at SE $\frac{1}{4}$ of
 tract as surveyed

W. line -
 start stone as set, SW $\frac{1}{4}$ Ch. Lot
 - (11 to pipe) S 4 1/4 W
 at 2.02 set large boulder on
 end with pos. tile

S. line

- S. S 85 1/2 E of pos. tile
 at 3.35 set stone in Elm = Sec
 line, in W. slope of pipe grade.
 Wit: stone at \angle in Fisher's line, S 4 1/4 W, 19 1/2 lbs
 Sugar, 18", S 79 1/2 W, 92 lbs