

526
220
192

Road, 199

INDEXED ON MAP

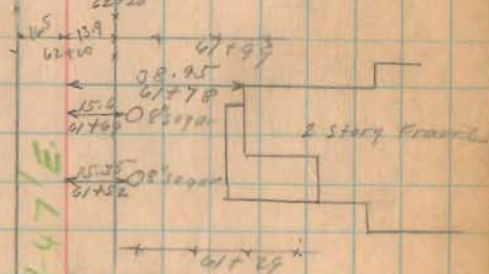
1439



15.25 → 8" sugar
6471
12.15 → 10" Apple
6477
14.70 → 10" sugar
63794
23.15

63+75 }
Planted 3/4" Iron
No Bag 4
→ 12.50 Ave Dipple
63+75

18.25 → 10" Apple
63771
17.20 → 10" Apple
63740
18.05 → 10" Apple
63709
18.35 → 10" Apple
62779
19.0 → 10" Apple
62720



586747/E

15.05 → 8" sugar
60771
15.25 → 8" sugar
60747
15.20 → 8" sugar
60777
15.15 → 10" sugar
60705
15.20 → 9" sugar
59787
15.10 → 8" sugar
59760

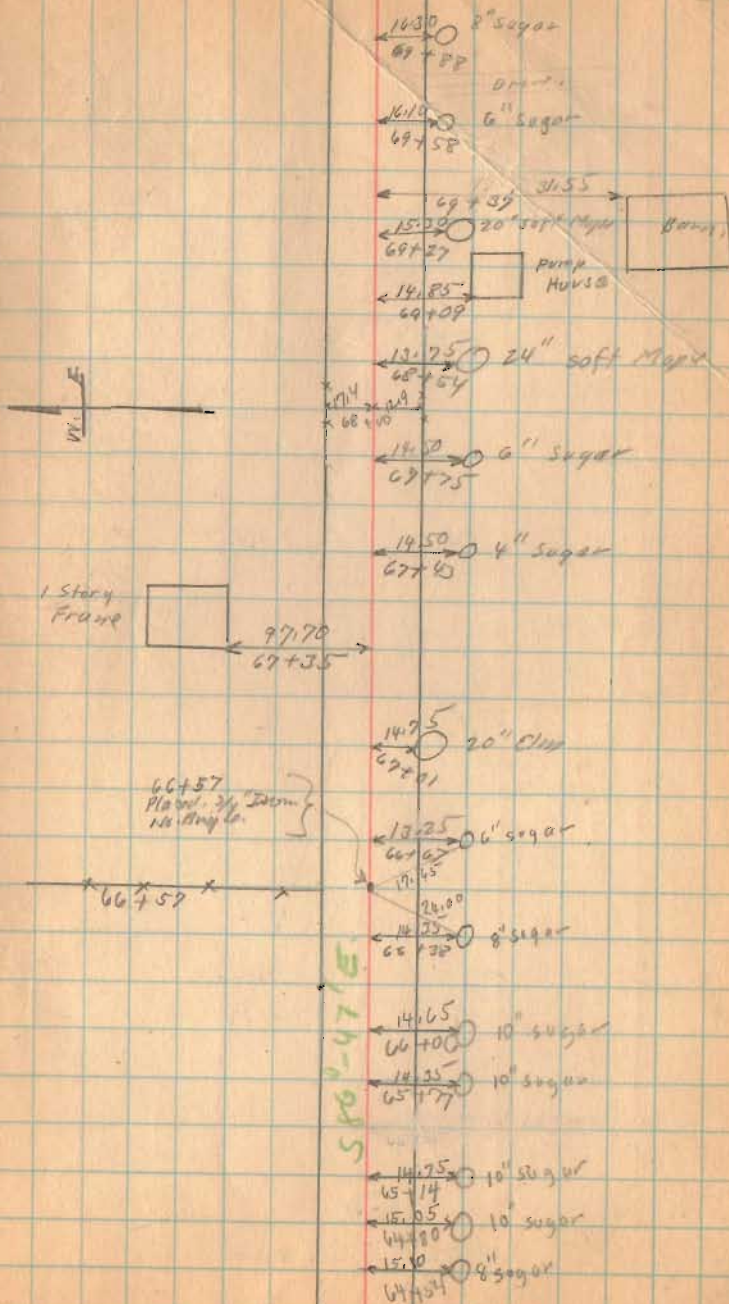
59+29 }
I.C. & E.R.R.

58+22.5 }
Planted 3/4" Iron
No Bag 4

11.0 → 10" Apple
59760
15.90 → 10" Apple
62150
58+29.5 }
I.C. & E.R.R.

Road. 199

2-23-30 52



1K39

INDEXED ON MAP

Road 199

(1459)

INDEXED ON MAP

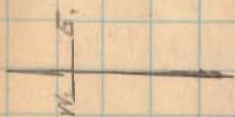
2-25-53

53

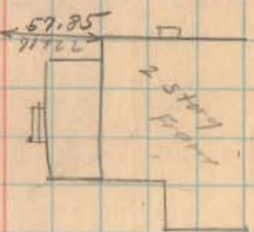
also
Feb. 24 1953
clear.

High Mt.
Derrick
Start

15.0 16" Maple
13710
14.65 18" Maple
72770
15.5 18" sugar
72706
17.7 10" sugar
11792



21.95 18" Hickory 71743
71743

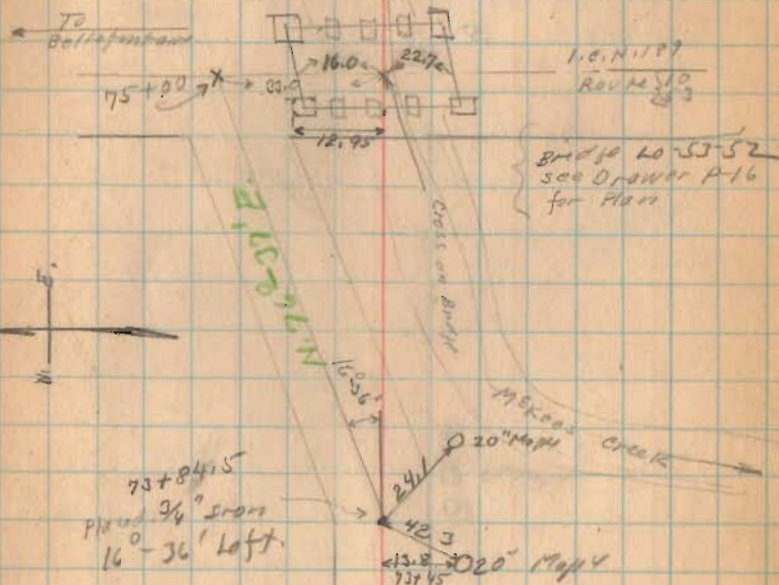
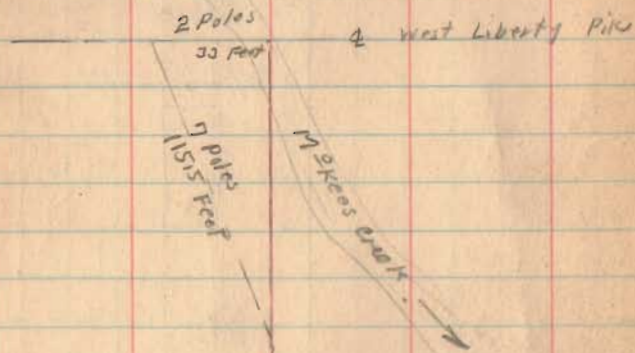


15.60 30" soft Maple
90760
90755

15.85 24" soft Maple
90742

15.65 24" soft Maple
90720

Road 189

Total Length 2500 Feet.
Total Length 1.4204 Milessee Road Record 1 Page 68
for description of Job.

1439

INDEXED ON MAP