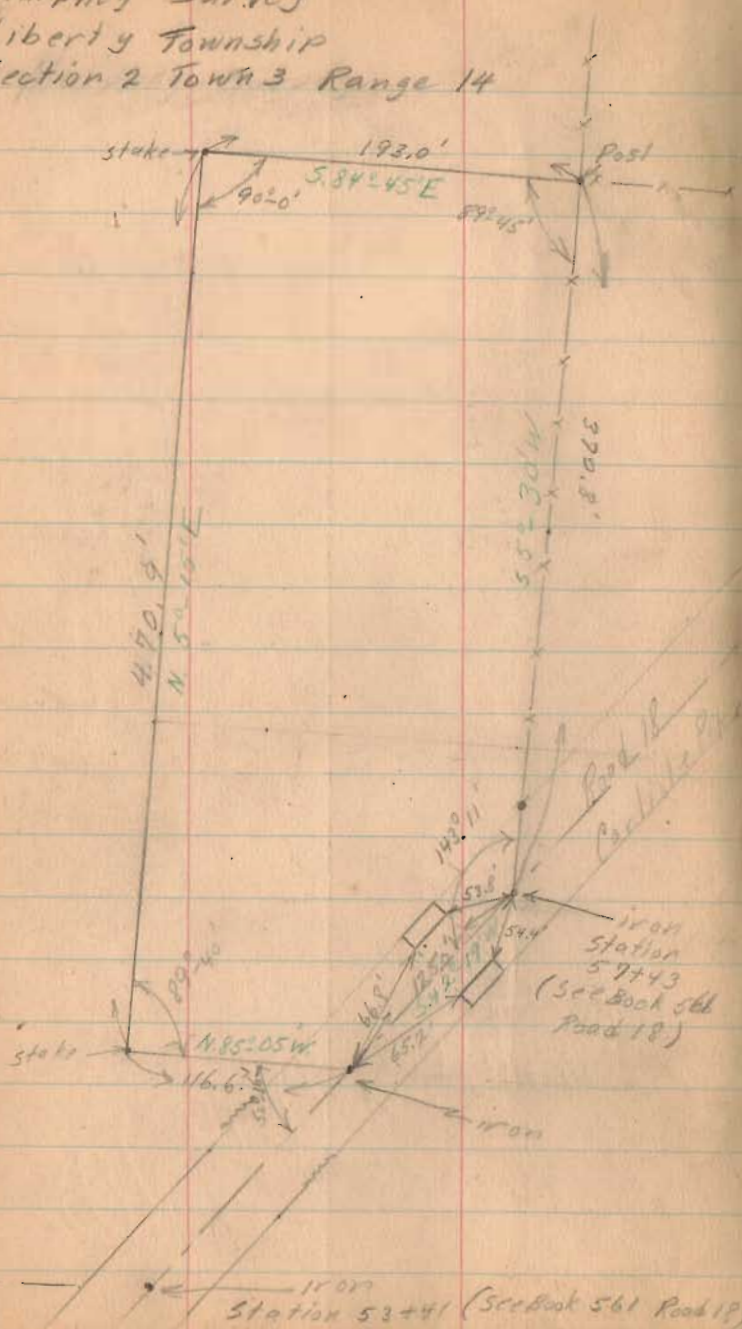


Murphy Survey
 Liberty Township
 Section 2 Town 3 Range 14



Line	Dist.	Bearing	Cos	Lot.	S	E	DAP	'Sin	PMD	R.A.
BC	470.9	N 52° 45' E	.992049	468.93	42.30	42.30				
CD	193.0	S 82° 05' E	.9915016	466.92	19.65	19.65				
DE	572.2	S 52° 10' W	.9953962	19.66	368.98	35.37				4921.422
EA	125.0	S 42° 18' W	.9294353	56.77	89.09	90.09				169972.912
AB	116.6	N 82° 05' W	.9857067	10.12	72.48	116.72				223552.06
				24.10	116.72	116.72				1175.241
					24.10	24.10				5499.2034
										194827.4149
<p>194,954.441P 21,479.8034 173,474.6377 = DA</p> <p>173,424.6414 = 86737.3207 69.41 2 86,737.3207 = 1.9889 A11C 43560</p>										

March 16, 1934
 E.K. Corc
 Lewis Keller
 Five day

1551

INDEXED ON MAP

Lee Surveying and Mapping Co., Inc.

Land Surveys • Topography • Subdivisions • Construction Layout

117 N. Madriver St.
Bellefontaine OH 43311



Phone: (937) 593-7335
Fax: (937) 593-7444

OVERHOLSER 1.280 ACRES

Lying in Section 2, Town 3, Range 14, Liberty Township, Logan County, Ohio.

Being out of the Paul L. Overholser and Martha E. Overholser original 8.47 acre tract as deeded and described Official Record 437, Page 217, Tract I of the Logan County Records of Deeds and being more particularly described as follows:

Beginning at a 1 inch iron rod found on P.I. Station 54 + 95.61 (Logan County Engineers' File X-18 of County Highway 18).

THENCE, with the center-line extended of County Highway 18, N 44°-04'-08" E, a distance of 239.06 feet to a MAG nail set at the TRUE POINT OF BEGINNING.

THENCE, with the east line of the Paul L. Overholser 2.0 acre tract (O.R. 437, Pg. 217, Tract II), N 5°-37'-28" E, a distance of 375.31 feet to a 5/8 inch iron rod set, passing a 5/8 inch iron rod set at 68.40 feet.

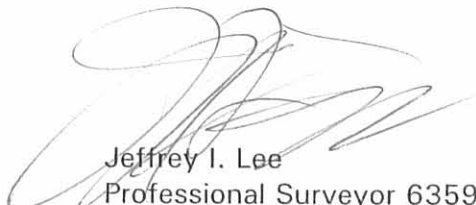
THENCE, S 84°-10'-50" E, a distance of 297.14 feet to a MAG nail set on the center-line extended of County Highway 18, passing a 5/8 inch iron rod set at 246.04 feet.

THENCE, with the center-line extended of County Highway 18 and the center-line of County Highway 18, S 44°-04'-08" W, a distance of 477.90 feet to the place of beginning.

Containing 1.280 acres of which 0.432 acre is within the highway right-of-way.

The basis for bearings is the center-line of County Highway 18, being N 44°-04'-08" E, and all other bearings are from angles and distances measured in a field survey by Lee Surveying and Mapping Co., Inc. on March 17, 2000.

Description prepared by:


Jeffrey I. Lee
Professional Surveyor 6359
March 21, 2000



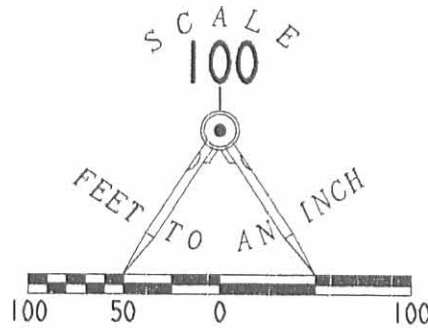
ORIGINAL STAMP IN GREEN L-2909

INDEXED ON MAP
1551 1D

REC'D 3-28-00 SWM OK ✓

LEGEND

- 5/8 INCH IRON ROD SET
- ⊙ MAG NAIL SET
- ⊘ DATE NAIL FOUND
- 1 INCH IRON ROD FOUND



RICHARD CECIL STEVENS AND
MARTHA STEVENS
ORIG. 14.80 ACRES
VOL. 261, PG. 22

PAUL L. OVERHOLSER AND
MARTHA E. OVERHOLSER
ORIG. 8.47 ACRES
O.R. 437, PG. 217
TRACT I

P.I. STATION
63+99.17
PG. 78 OF 84

PAUL L. OVERHOLSER AND
MARTHA E. OVERHOLSER
2.0 ACRES
O.R. 437, PG. 217
TRACT II

1.280 ACRES
OF WHICH 0.432 ACRE
IS IN THE HIGHWAY
RIGHT-OF-WAY

PC STATION
59+60.34

REFERENCES

LOGAN COUNTY ENGINEERS' FILES:
X-18
FIELD BOOK 702, PAGES 65 & 66
FIELD BOOK 702, PAGES 56-60
FIELD BOOK 660, PAGE 45

P.I. STATION
54+95.61
PG. 77 OF 84

COUNTY HIGHWAY 18

**SURVEY OF 1.280 ACRES OUT OF
THE PAUL L. OVERHOLSER AND
MARTHA E. OVERHOLSER
ORIGINAL 8.47 ACRE TRACT
OFFICIAL RECORD 437, PAGE 217, TRACT I
SECTION 2, TOWN 3, RANGE 14
LIBERTY TOWNSHIP
LOGAN COUNTY, OHIO**



SURVEYED BY:

JEFFREY I. LEE
PROFESSIONAL SURVEYOR 6359
MARCH 17, 2000

COPYRIGHT 2000 BY:
LEE SURVEYING & MAPPING CO., INC.
117 North Madriver Street
BELLEFONTAINE, OHIO 43311
(937) 593-7335

2 WORKING DAYS
BEFORE YOU DIG
CALL TOLL FREE **800-362-2764**
OHIO UTILITIES PROTECTION SERVICE.

1551 1P

D 371 0VFRHSFR

1-2000-7

Murphy Survey.

The following described land in the Northeast quarter of Section 2, Town 3, Range 14 of between the Miami River Survey and being in Liberty Township, Logan County, Ohio.

Beginning at an iron in the center line of Road #18, (known as the Carlisle Pike) and in the line between T.R. Hunter and Elnora Murphy; thence with the center line of Road #18, S.42° 19' W. 125.0' to an iron; thence N.85° 05' W. 116.6' to a stake; thence N.5° 15' E. 470.9' to a stake in the line between Murphy and G.E. Niebold; thence with Niebold's South line S.84°-45' E. 193.0' to a post in Hunter's West line; thence with Hunter's West line S.5° 30' W. 370.8' to the place of beginning, containing 2.00 acres more or less, and being the same tract as surveyed March 16, 1934 as shown and recorded in Logan County Surveyor's Book # 549, Page 59.

INDEXED ON MAP

1551 2D