

Road No. 195

Measurements

9+00

6+00

1+00

Sec. 33 T. 3 R. 13

Length 992 Feet
 " 187878 Miles
 " 19 "

40' Commissioners Journal No. 9 Pg. 290
 " " " 10 " 50

1851

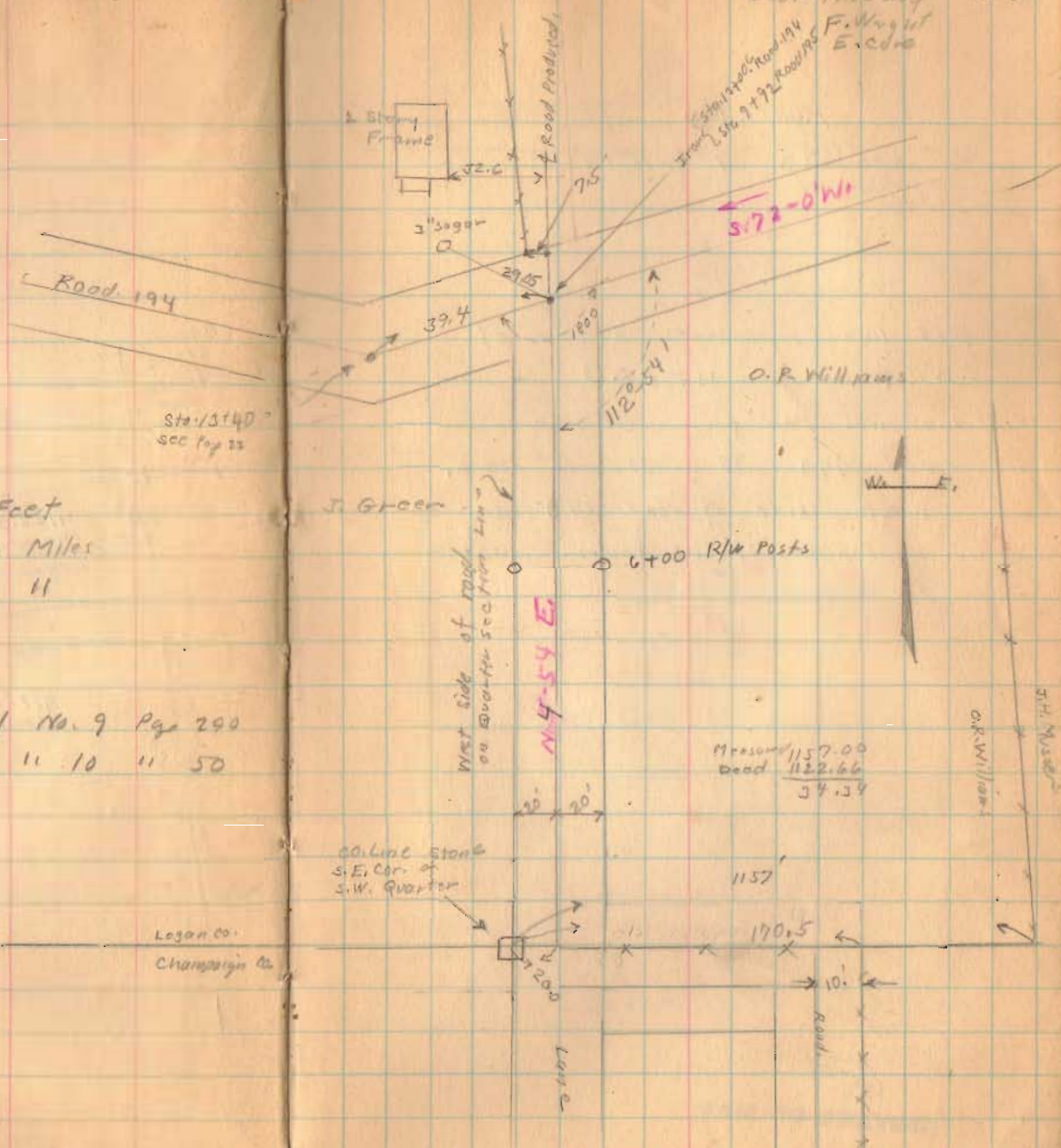
1675

INDEXED ON MAP

July - 30 - 1933

Clear - Nice day

F. Wright
E. C. De



Sta. 13+40
Sec. 33

J. Green

O. R. Williams

6+00 R/W Posts

West side of road
on 184th section line

N 4-54 E

Measured 1157.00
 Dead 1122.66
 34.34

Colline Stone
S.E. Cor. of
S.W. Quarter

Logan Co.
Champaign Co.

20' x 20'

1157

170.5

1200

Large

Road

(over)

Road. 195
sec. 33 T.5 R.13

Red. line represents E. line of
S.W. Quarter sec. 33 T.5 R.13
Line was ran from Post near
Road. 193 to Co. Line Store,
West side of road 195 is
on E. Line of S.W. Quarter

1675
INDEXED ON MAP

28

