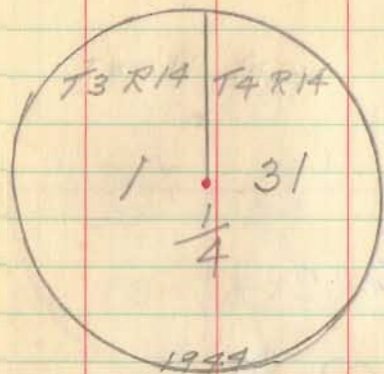


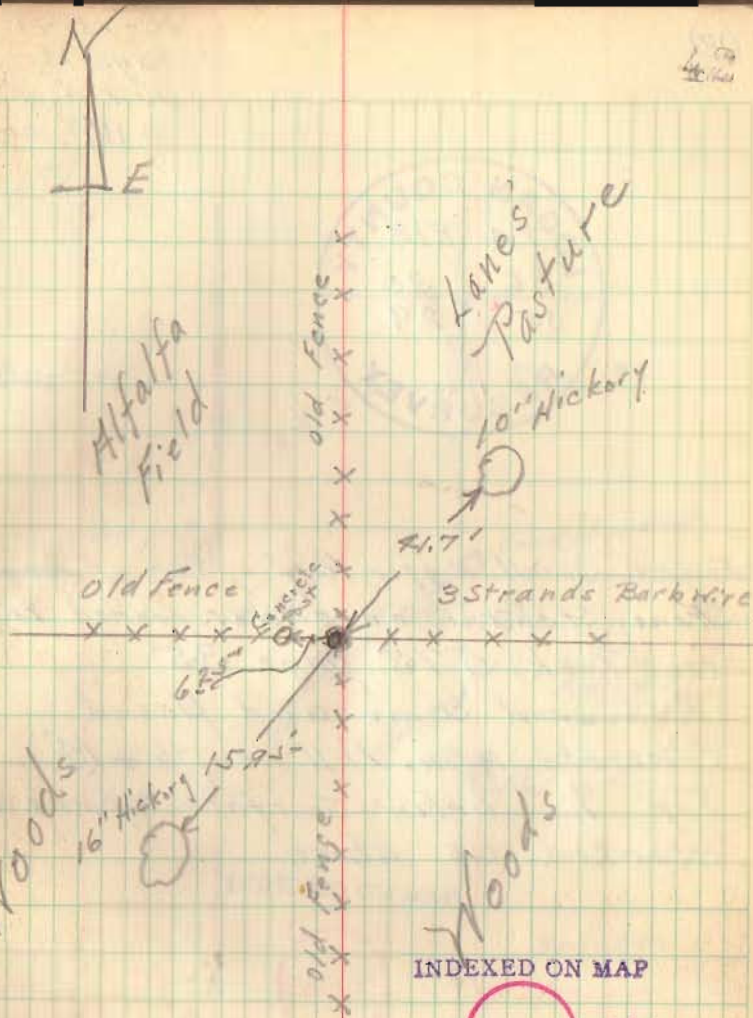
(19)

10-13-77
Insert
Robbins
Mr. Adams



Found Pointed Stone with broken pieces of tile at S.W. Corner of Frank Lanes pasture.

Removed same and set Con. Men. Full length 6" above ground
Marked as above



INDEXED ON MAP

2654 Liberty
Twp.

INDEXED ON MAP