

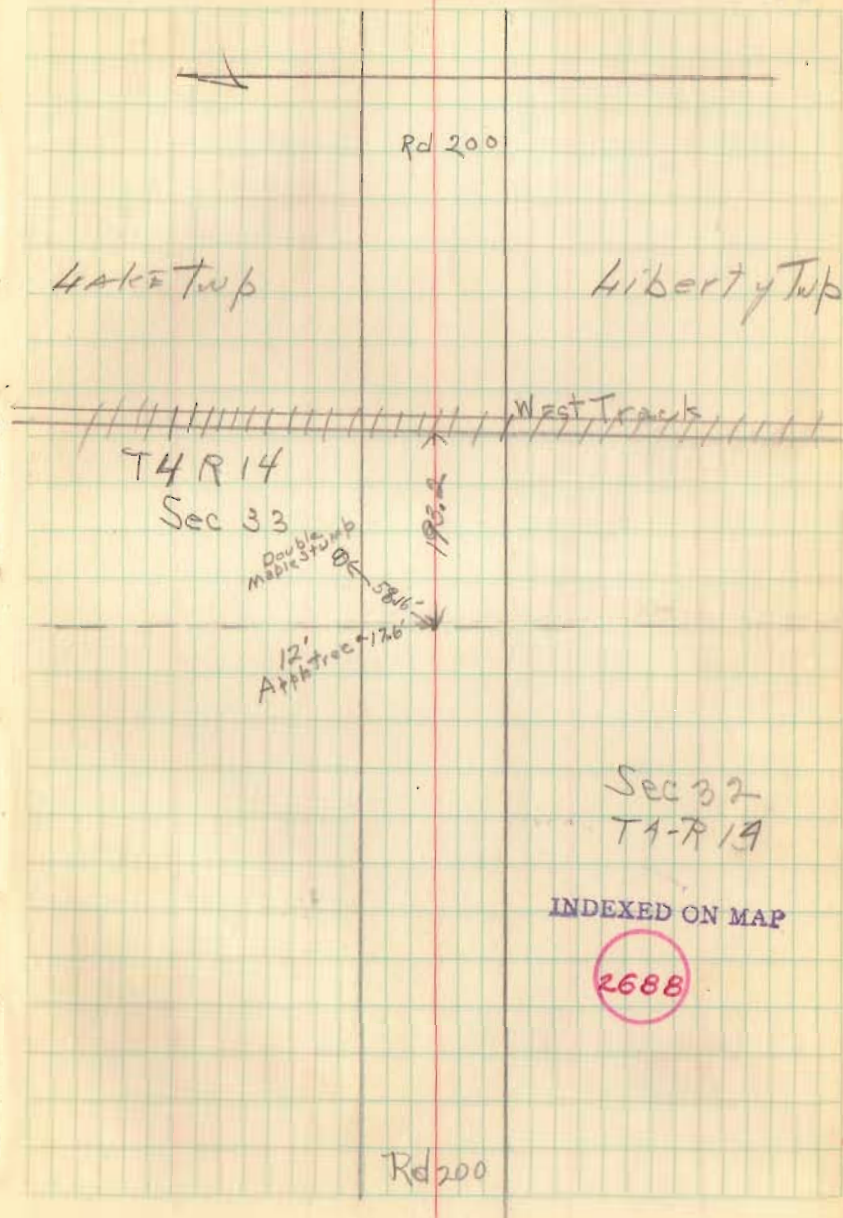


7/14/43

Found stone boulder 8x12x24
3' under surface. Removed stone
and placed Mon. 3" below surface
with this marking.

G. Wilgus
R. Fout
A. Allen

76





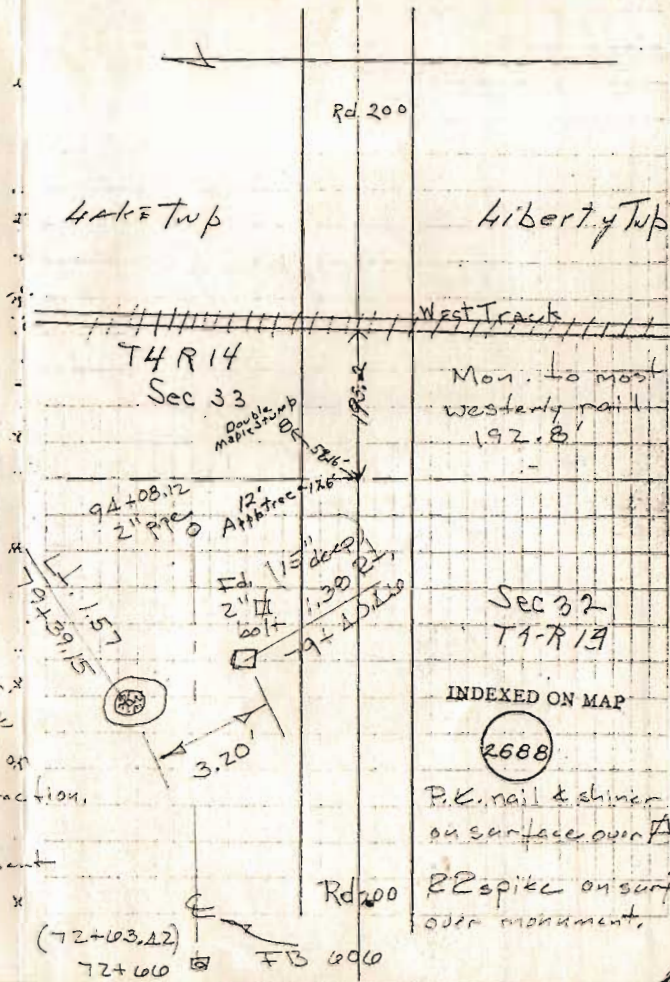
7/14/43

Found stone boulder 8x12x24
 3' under surface. Removed stone
 and placed Mon. 3" below surface
 with this marking.

G. Wilgus
 P. Fout
 A. Allen

Fd. 10 June, 1987 p.m.
 10" deep. - put 1/2 brick
 & steel plate 3"x5" x 90" on
 west side for mag. attraction.

Chamberlain, Dill, & Gilbert
 Nicholas



Liberty Twp

West Tracks

Mon. to most
 westerly nail
 192.8

Sec 32
 T4-R 19

INDEXED ON MAP

2688

P.K. nail & shiner
 on surface over A

22 spike on surface
 over monument.

INDEXED ON MAP

2688

Rd 200