

INDICATES NUMENTS

*Concrete 386 Feet 3.25  
262 Feet  
includes  
improvements*

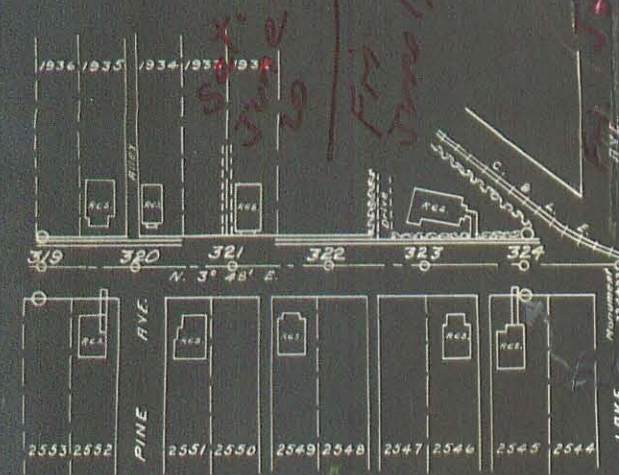
FED. AID DIST. NO.	STATE	FED. AID PROJECT	FISCAL YEAR
10	OHIO	603 A	1931

59  
93

S.H. 189 SEC. A  
LOGAN COUNTY

CONCRETE  
See Sheet No 53

STR. 325+16 END OF FEDERAL PROJECT 603A

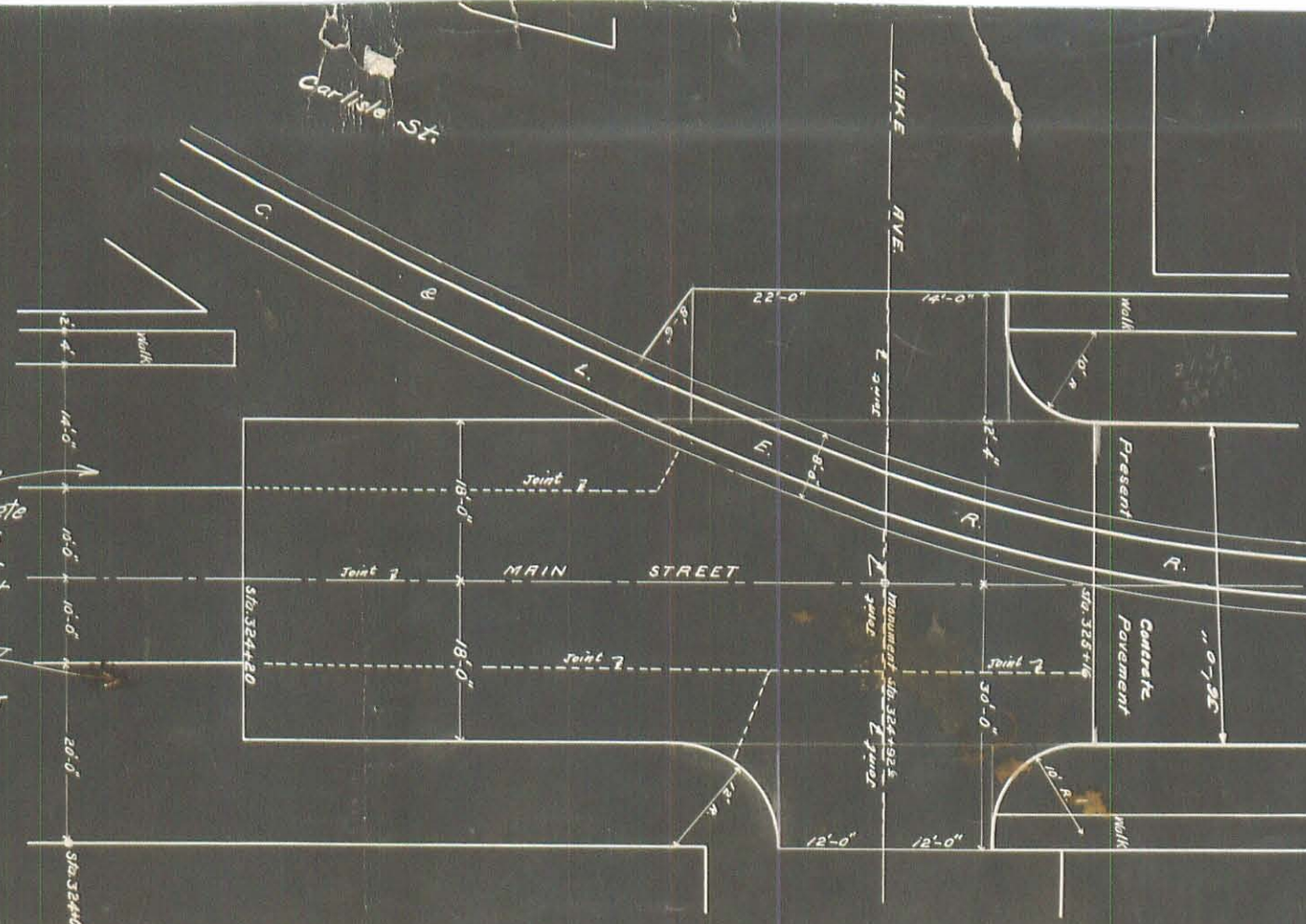


No tapered concrete approach provided, as property owners propose to widen pavement and construct curb

PAVING DETAIL INTERSECTION AT LAKE AVENUE, -36 FT. WIDTH



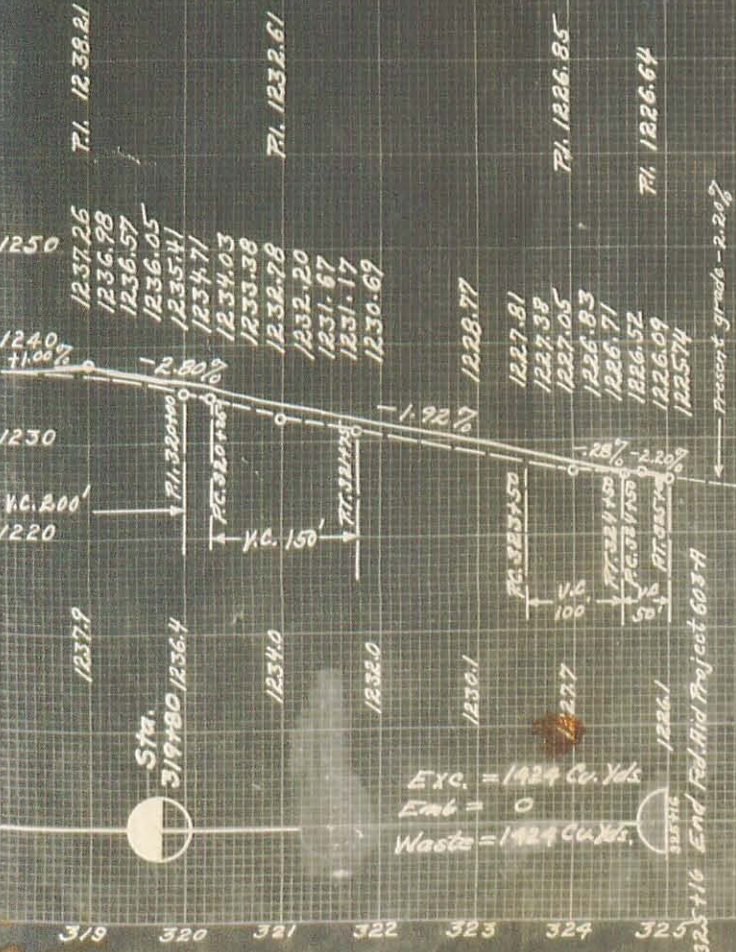
Sta. 324+20 to 325+16  
Total 439.90 Sp. Yds. Pavement.



Left Edge of Pavement	Width	Station	Grade Elev.	Right Edge of Pavement
1205.95	10.0	154+95.3 PC-100'	1206.05	1205.95
1206.39		155+20.3	1206.49	1206.54
1206.82		+45.3	1206.92	1207.12
1207.26		+70.3	1207.36	1207.71
1207.70		+95.3 PC.	1207.80	1208.30
1208.13		156+20.3	1208.23	1208.88
1208.57		+45.3 PC+50	1208.67	1209.47
1208.66		+50	1208.76	1209.56
1209.09		+7.5	1209.19	1209.99
1209.53		157+00	1209.63	1210.43
1209.96		+25	1210.06	1210.86
1210.40		+50	1210.50	1211.30
1210.84		+75	1210.94	1211.74
1211.17		+93.6 PT-50	1211.27	1212.07
1211.61		158+18.6	1211.71	1212.36
1212.04		+43.6 PT.	1212.14	1212.64
1212.48		+68.6	1212.58	1213.03
1212.92		+93.6	1213.02	1213.22
1213.35		159+18.6	1213.45	1213.50
1213.79	10.0	+43.6 PT+100	1213.89	1213.79

Extra Area - None

Grade line shown is Crown of finished pavement



CONCRETE OR MACADAM  
See Sheet No. 50

Left Edge of Pavement	Width	Station	Grade Elev.	Right Edge of Pavement
1168.77	10.00	51+28.9 RC-100'	1168.87	1168.77
1169.17		+53.9	1169.07	1168.97
1169.57		+78.9	1169.27	1169.17
1169.96		52+03.9	1169.47	1169.37
1170.36		+28.9 PC.	1169.67	1169.57
1170.76		+53.9	1169.87	1169.77
1171.16		+78.9 PC+50	1170.07	1169.97
1171.55		53+00	1170.24	1170.14
1171.50		+25	1170.41	1170.31
1171.59		+50	1170.50	1170.40
1171.62		+75	1170.53	1170.43
1171.59		54+00	1170.49	1170.39
1171.47		+25	1170.38	1170.28
1171.29		+50	1170.20	1170.10
1171.04		+75	1169.95	1169.85
1170.72		55+00	1169.63	1169.53
1170.34		+25	1169.25	1169.15
1169.88		+50	1168.79	1168.69
1169.36		+75	1168.27	1168.17
1169.31		+78.9 RT-50	1168.22	1168.12
1168.52		56+01.9	1167.63	1167.53
1167.65		+26.9 PT.	1167.96	1167.86
1166.71		+51.9	1166.22	1166.12
1165.72		+76.9	1165.42	1165.32
1164.64		57+01.9	1164.54	1164.44
1163.50	10.00	72.69 RT+100	1163.60	1163.50

Extra Area = 92.15 Sp. Yds.

MACADAM  
See Sheet No. 53

Left Edge of Pavement	Width	Station	Grade Elev.	Right Edge of Pavement
1207.91	10.00	154+95.3 PC-100'	1208.07	1207.97
1208.35		155+20.3	1208.45	1208.50
1208.66		+45.3	1208.76	1208.96
1208.90		+70.3	1209.00	1209.35
1209.08		+95.3 PC.	1209.18	1209.68
1209.21		156+20.3	1209.31	1209.96
1209.34		+45.3 PC+50	1209.47	1210.24
1209.34		+50	1209.46	1210.26
1209.41		+75	1209.59	1210.79
1209.62		157+00	1209.72	1210.52
1209.75		+25	1209.85	1210.65
1209.76		+50	1209.79	1210.78
1210.00		+75	1210.11	1210.91
1210.13		+93.6 RT-50	1210.23	1210.83
1210.33		58+18.6	1210.47	1211.08
1210.58		+43.6 PT.	1210.68	1211.18
1210.90		+68.6	1211.00	1211.35
1211.26		+93.6	1211.36	1211.56
1211.61		159+18.6	1211.77	1211.82
1211.15	10.00	+43.6 PT+100	1212.25	1212.25

Extra Area = None

CONCRETE OR MACADAM  
See Sheet No. 58

Left Edge of Pavement	Width	Station	Grade Elev.	Right Edge of Pavement
1238.60	10.00	294+43.5 PC	1238.70	1238.60
1239.10		+68.5	1239.05	1238.95
1239.60		+93.5	1239.40	1239.30
1240.10		295+18.5	1239.75	1239.65
1240.60		+43.5 PC	1240.10	1240.00
1241.10		+68.5	1240.45	1240.35
1241.60		+93.5 PC+50	1240.80	1240.70
1242.03		296+00	1240.88	1240.78
1242.38		+25	1241.23	1241.13
1242.73		+50	1241.58	1241.48
1242.94		+75	1241.93	1241.83
1243.14		297+15.2	1242.14	1242.04
1243.34		+40.2 PT.	1242.49	1242.39
1243.54		+65.2	1242.84	1242.74
1243.74		+90.2	1243.19	1243.09
1243.94		298+15.2	1243.54	1243.44
1244.14		+40.2 PT+100	1243.89	1243.79
1244.14	10.00		1244.24	1244.14

Extra Area = None

INDEXED ON MAP

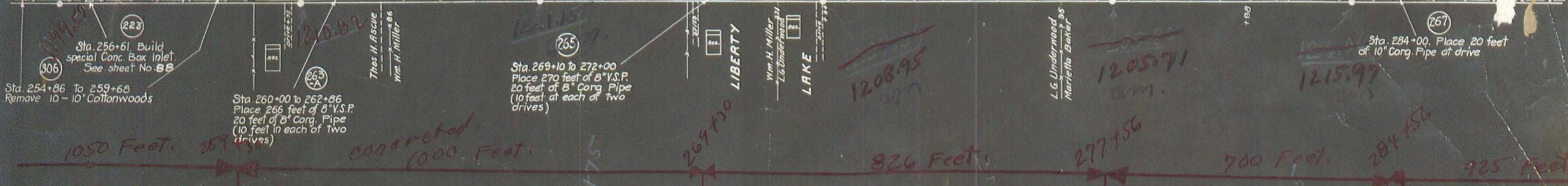
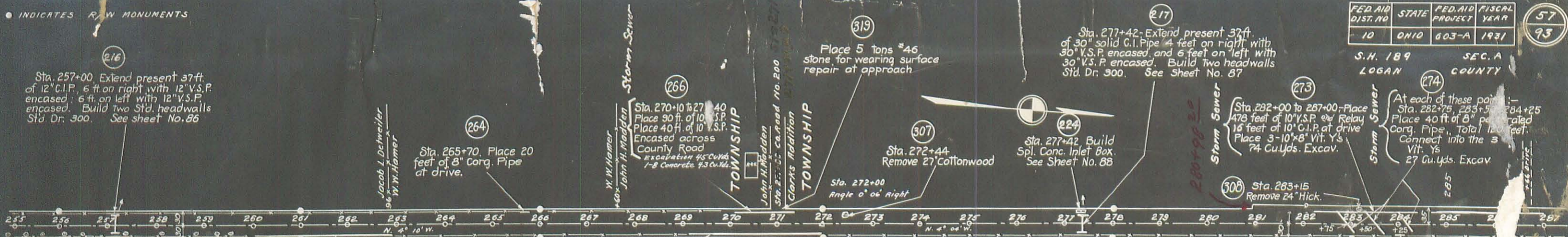


INDICATES R.W. MONUMENTS

FED. AID DIST. NO.	STATE	FED. AID PROJECT	FISCAL YEAR
10	OHIO	603-A	1931

57  
93

S.H. 189 SEC. A  
LOGAN COUNTY



B.M. Sta. 271+25  
S. end of lowest step  
50' right of &  
Elevation 1217.02

Grade Line shown is crown  
of finished pavement

Storm Sewer  
Flow Line  
3'-6" Below  
Crown of Road

Flow line of storm sewer  
4'-0" below crown of  
finished pavement.

Exc. = 2089 Cu. Yds.  
Emb. = 2502 Cu. Yds.  
Emb + 22.7 = 3052 Cu. Yds.  
Deficiency = 963 Cu. Yds.

Note: This deficiency to come  
from Excess Sta. 285+00 to  
219+80

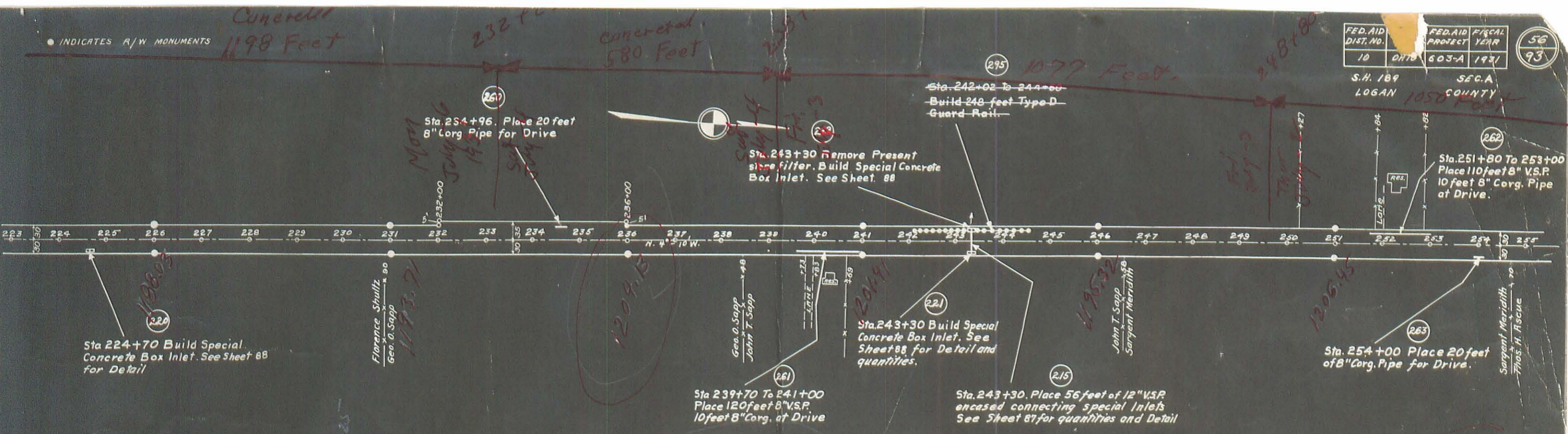
INDEXED ON MAP  
3414 1P-3

INDICATES R/W MONUMENTS

FED. AID DIST. NO.	FED. AID PROJECT	FISCAL YEAR
10	ONTD 603-A	1931

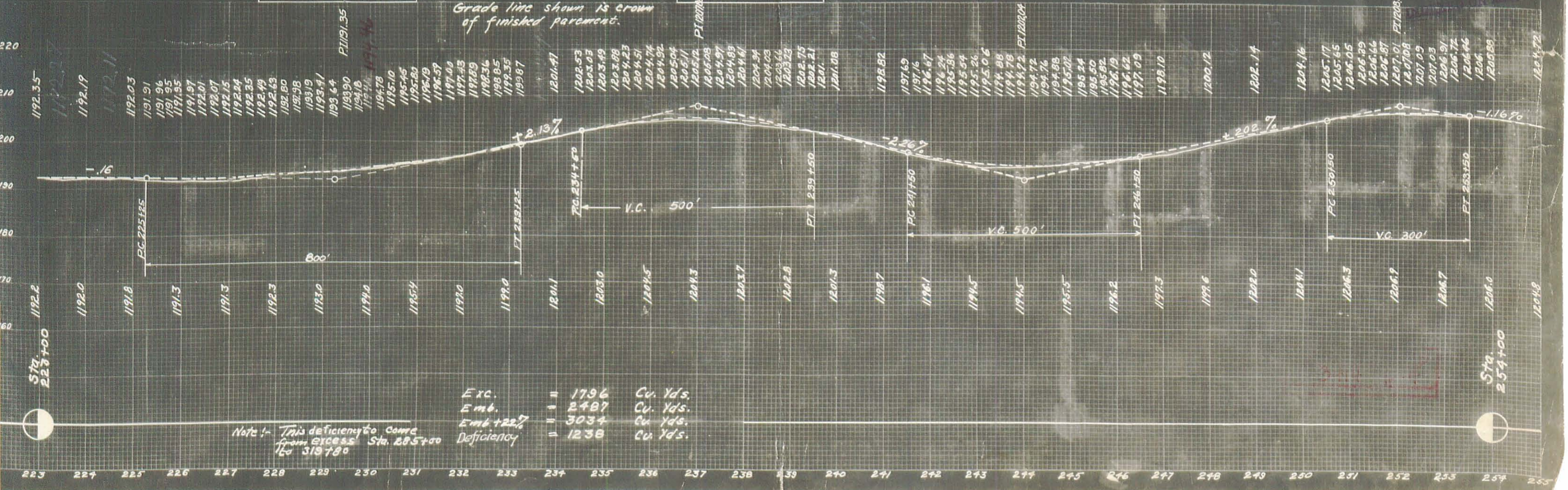
56  
93

S.H. 189  
LOGAN COUNTY



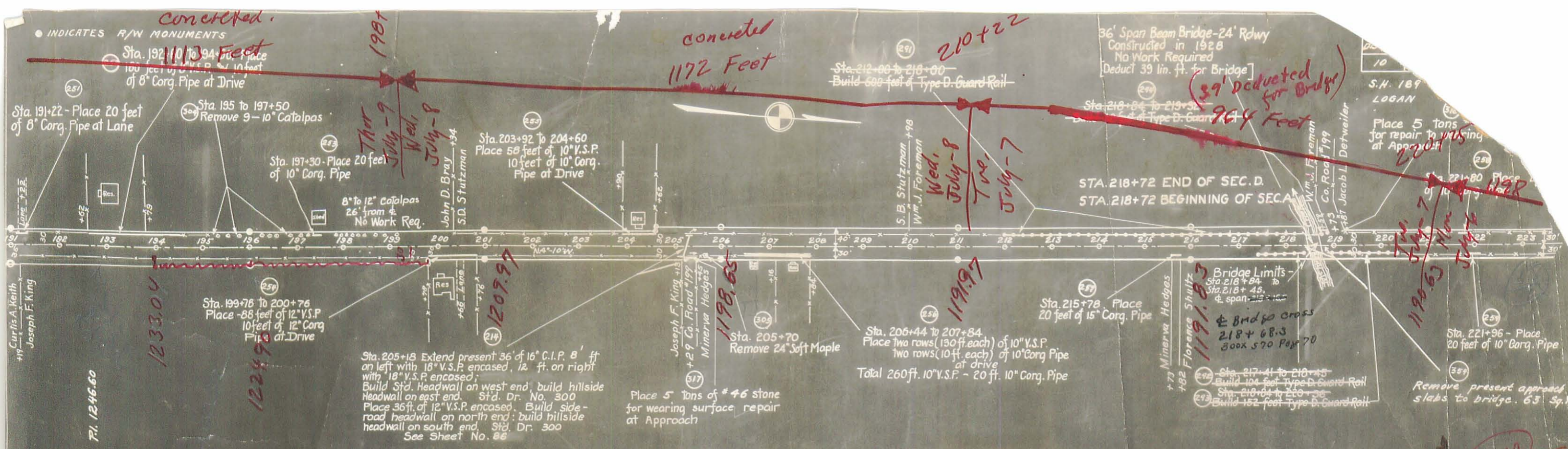
B.M. Sta. 229+25  
Nails in root W. side of 30"  
W. Oak - 100' Right of  $\pm$   
Elevation 1194.03

B.M. Sta. 238+25  
Nails in top of stump  
60' Right of  $\pm$   
Elevation 1205.25



Exc.	=	1796	Cu. Yds.
Emb.	=	2487	Cu. Yds.
Emb + 22%	=	3034	Cu. Yds.
Deficiency	=	1238	Cu. Yds.

Note: This deficiency came from excess Sta. 225+00 to 319+80



B.M. Sta. 192+75  
S.E. cor. of lowest conc. step, S. side of house - 70' Left of  $\pm$   
Elevation 1242.25

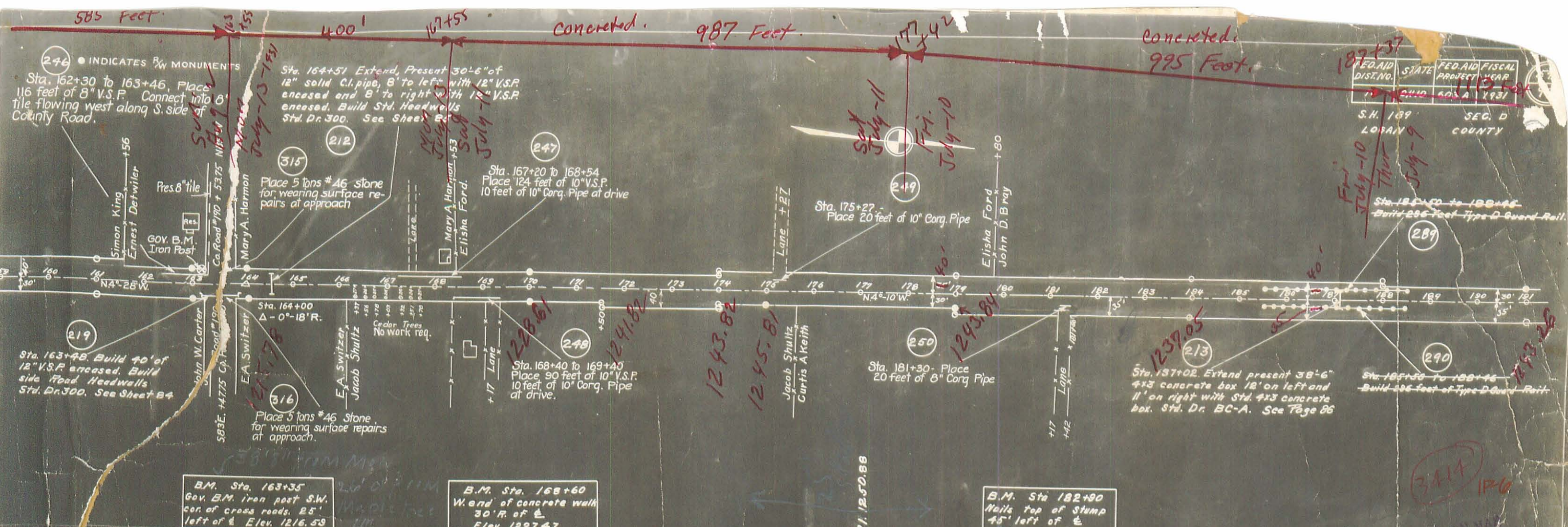
B.M. Sta. 200+25  
S.W. cor. lowest conc. step  
60 ft. right of  $\pm$   
Elevation 1215.42

B.M. Sta. 207+50  
N.W. cor. step. (not walk)  
50 ft. right of  $\pm$   
Elevation 1196.55

B.M. Sta. 218+84  
Small cross on top of N.W. post of Concrete Bridge  
Elevation 1197.87



3414 IPS  
INDEXED ON MAP



FED. AID DIST. NO.	STATE	FED. AID PROJECT YEAR	FISCAL YEAR
1	OHIO	603 A	1931

S.H. 189  
LOSAI COUNTY

B.M. Sta. 163+35  
Gov. B.M. iron post S.W.  
cor. of cross roads. 25'  
left of E Elev. 1216.59

B.M. Sta. 168+60  
W. end of concrete walk  
30' R. of E  
Elev. 1227.47

B.M. Sta 182+90  
Nails top of Stump  
45' left of E  
Elev. 1232.90



an man July-13-1930  
Mixer  
Moved from Sta. 163+55  
To Sta. 0+00

Exc. = 5206 Cu. Yds.  
Emb. = 4917 Cu. Yds.  
Emb. + 22% = 5989 Cu. Yds.  
Deficiency = 183 Cu. Yds.

Note: This deficiency to come  
From Sta. 137+26 to 150+00.

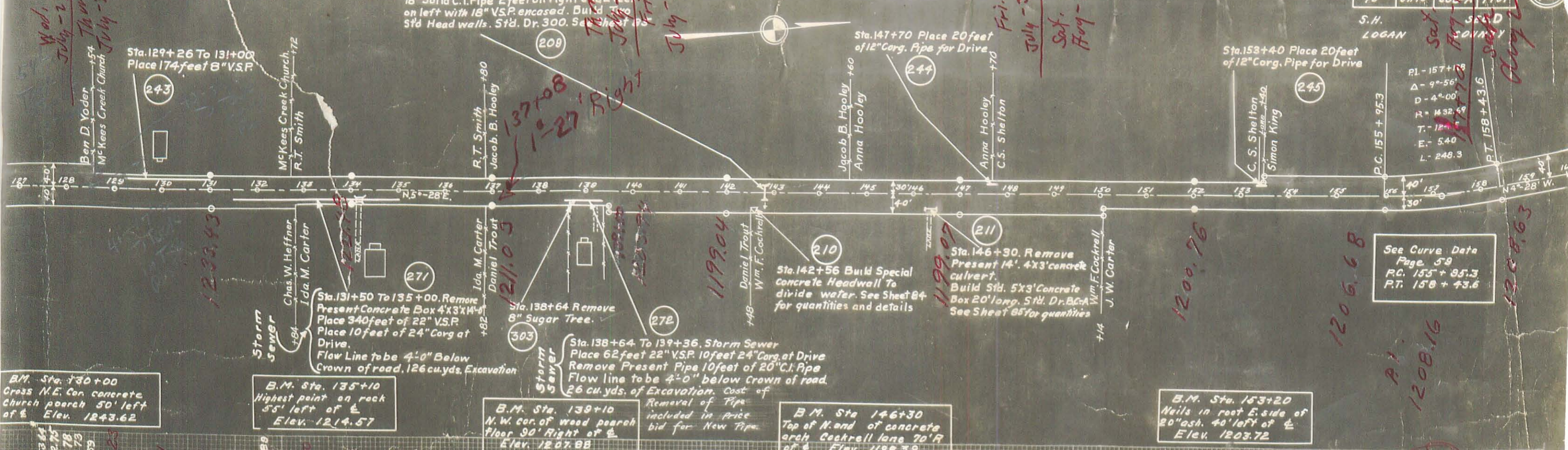
concreted. 1237 Feet 782 Feet. 1014 Feet.

FED. AID DIST. NO.	STATE	FED. AID PROJ. NO.	FISCAL YEAR
10	OHIO	605-A	1931

S.H. LOGAN S.S.D. LOGAN COUNTY

P.I. - 157+08  
 Δ - 9°-56'  
 D - 4°-00'  
 R = 1432.69  
 T = 125.10  
 E = 5.40  
 L = 248.3  
 P.C. 155+95.3  
 P.T. 158+43.6

INDICATES R/W MONUMENTS



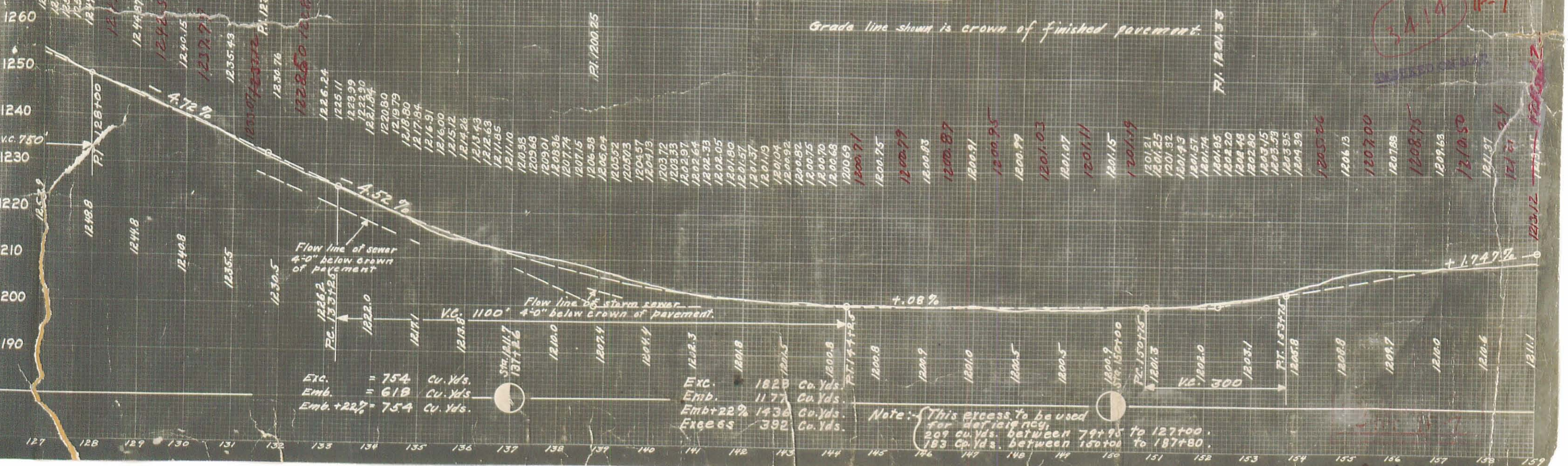
B.M. Sta. 130+00  
Cross N.E. Con concrete Church porch 50' left of & Elev. 1243.62

B.M. Sta. 135+10  
Highest point on rock 55' left of & Elev. 1214.57

B.M. Sta. 139+10  
N.W. cor. of wood porch floor 90' right of & Elev. 1207.88

B.M. Sta. 146+30  
Top of N. end of concrete arch Cockrell lane 70' R of & Elev. 1198.39

B.M. Sta. 153+20  
Nails in roof E. side of 20" ash. 40' left of & Elev. 1203.72



Grade line shown is crown of finished pavement.

Exc. = 754 Cu. Yds.  
Emb. = 618 Cu. Yds.  
Emb. + 22% = 754 Cu. Yds.

Exc. = 1828 Cu. Yds.  
Emb. = 1177 Cu. Yds.  
Emb. + 22% = 1436 Cu. Yds.  
Excess = 392 Cu. Yds.

Note: This excess to be used for leveling, 209 cu. yds. between 79+95 to 127+00, 183 cu. yds. between 150+00 to 187+80.

34:11 IP-7

1200.76

1206.68

1208.16

1210.50

1211.31

1212.12

1213.12

1214.12

1098 Feet. CONCRETE 1120 Feet CONCRETE 1272 Feet.

● INDICATES P/W MONUMENTS

Sta. 110+09. On west side of Road Relay Present  
16 feet 12" Solid C.I. Pipe. Extend with 24 feet 12" V.S.P.  
Encased. Build Two Side-road Head walls. S.W. Dr. No. 300  
See Sheet 83

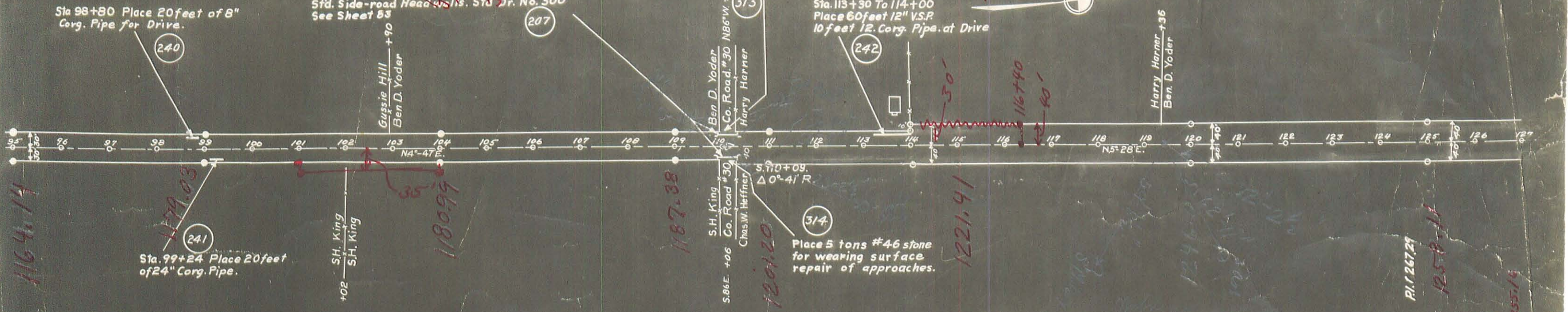
On East side of Road Relay Present 24 feet 24" C.I. Pipe  
Extend with 16 feet 24" V.S.P. Encased. Build Two  
Std. Side-road Head walls. S.W. Dr. No. 300  
See Sheet 83

FED. AID DIST. NO.	STATE	FED. AID PROJECT	FISCAL YEAR
10	OHIO	603-A	1931

S.H. 189  
LOGAN

SEC. D  
COUNTY

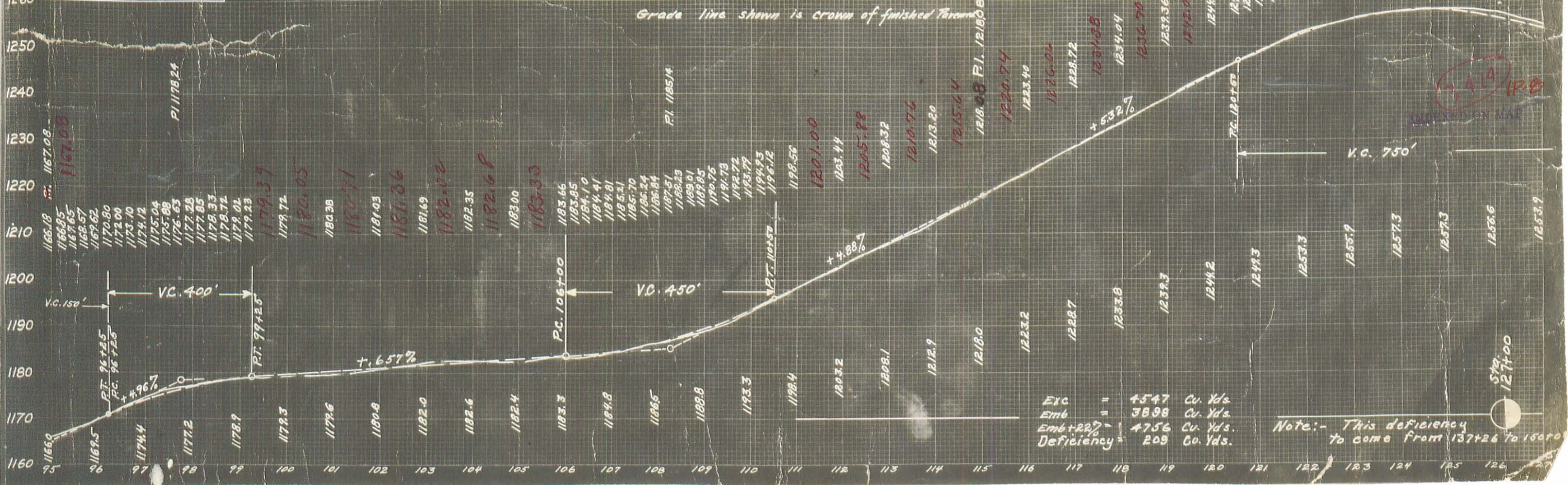
52  
93



B.M. Sta. 99+60  
Nails root E. side of double  
red oak 50' left of E  
Elev. 1179.48

B.M. Sta. 113+75  
Concrete walk at center  
of porch. Yoder res. on  
left. Elev. 1208.27

B.M. Sta. 123+85  
Nails top of stump 40'  
left of E  
Elev. 1257.36



Exc = 4547 Cu. Yds.  
Emb = 3898 Cu. Yds.  
Emb+22% = 4756 Cu. Yds.  
Deficiency = 209 Cu. Yds.

Note:- This deficiency  
to come from 137+26 to 150+00