

REC'D 10-3-95 SWY BK ✓



# Lee Surveying and Mapping Co.



Farm Surveys • Lot Surveys • Topography • Subdivisions • Construction Layout

143 EAST COLUMBUS AVENUE  
BELLEFONTAINE, OHIO 43311

(513) 593-7335

JEFFREY I. LEE, P.S.

## OELKER 1.022 ACRE

Lying in Section 35, Town 5, Range 13, Liberty Township, Logan County, Ohio.

Being out of the Joe A. Oelker original 126.71 acres as deeded and described in Official Record 264, Page 963 of the Logan County Records of Deeds and being more particularly described as follows:

Beginning at a railroad spike found at the intersection of center-lines of State Route 508 and Township Road 188.

THENCE, with the center-line of Township Road 188 (60 feet wide), N 4°-08'-00" E, a distance of 1395.13 feet to a 7/8 inch iron pipe found at the southwest corner of the said 126.71 acre tract and the TRUE POINT OF BEGINNING.

THENCE, with the center-line of Township Road 188, N 4°-08'-00" E, a distance of 150.00 feet to a railroad spike set.

THENCE, S 84°-01'-27" E, a distance of 296.83 feet to a 5/8 inch iron rod set.

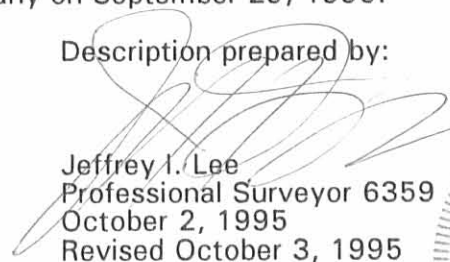
THENCE, S 4°-08'-00" W, a distance of 150.00 feet to a 5/8 inch iron rod set.

THENCE, with the north line of the Karl Z. Smith 35.16 acre tract (Vol. 356, Pg. 613), N 84°-01'-27" W, a distance of 296.83 feet to the point of beginning.

Containing 1.022 acres of which 0.103 acre is within the highway right-of-way.

The basis for bearings is based upon the center-line of Township Road 188 being N 4°-08'-00" E, and all other bearings are from angles and distances measured in a field survey by Lee Surveying and Mapping Company on September 29, 1995.

Description prepared by:

  
Jeffrey I. Lee  
Professional Surveyor 6359  
October 2, 1995  
Revised October 3, 1995



L 2330

ORIGINAL STAMP IN GREEN

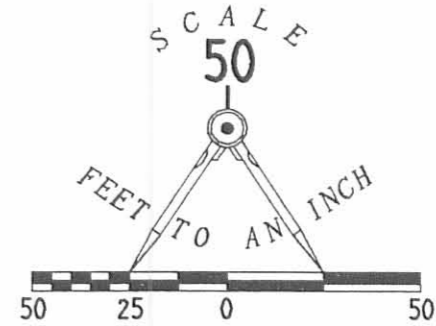
INDEXED ON MAP  
3571 1D

REC'D 10-3-95 SMY OK

REFERENCES

LOGAN COUNTY ENGINEER'S FILES:  
FIELD BOOK 519. PAGES 60-63  
R-1387  
R-1110

JOE A. OELKER  
ORIG. 126.71 AC  
O.R. 264. PG. 963



LEGEND

- ⊗ RAILROAD SPIKE FOUND
- ⊕ RAILROAD SPIKE SET
- 5/8" IRON ROD SET
- 7/8" IRON PIPE FOUND
- ⦿ 1" I. ROD FOUND
- X- FENCE ROW

TOWNSHIP ROAD 188 (60')

1.022 ACRES  
OF WHICH 0.103 ACRE IS WITHIN  
HIGHWAY RIGHT-OF-WAY

JOE A. OELKER  
ORIG. 126.71 AC  
O.R. 264. PG. 963

KARL Z. SMITH  
35.16 ACRES  
VOL. 356. PG. 613

SURVEY OF 1.022 ACRES OUT  
OF THE JOE A. OELKER  
ORIGINAL 126.71 ACRE TRACT  
OFFICIAL RECORD 264. PAGE 963  
SECTION 35. TOWN 5. RANGE 13  
LIBERTY TOWNSHIP  
LOGAN COUNTY, OHIO



ORIGINAL STAMP IN GREEN

SURVEYED BY:

*Jeffrey I. Lee*  
JEFFREY I. LEE  
PROFESSIONAL SURVEYOR 6359  
SEPTEMBER 29, 1995

COPYRIGHT 1995 BY:

LEE SURVEYING & MAPPING CO.  
143 East Columbus Avenue  
BELLEFONTAINE, OHIO 43311  
(513) 593-7335

D 266 OELKER

L-2330-4

INDEXED ON MAP  
3571 1P

2 WORKING DAYS  
**BEFORE YOU DIG**  
CALL TOLL FREE **800-362-2764**  
OHIO UTILITIES PROTECTION SERVICE.

REC'D 10-3-95 SMY OK ✓

REC 9-18-01 SMY OK

# Lee Surveying and Mapping Co., Inc.

Land Surveys • Topography • Subdivisions • Construction Layout

117 N. Madriver St.  
Bellefontaine OH 43311



Phone: (937) 593-7335  
Fax: (937) 593-7444

## VERBSKY 0.065 ACRES

Lying in Section 35, Town 5, Range 13, Liberty Township, Logan County, Ohio.

Being out of the Mark J. Verbsky 1.498 acre tract as deeded and described in Official Record 474, Page 98 of the Logan County Records of Deeds and being more particularly described as follows:

Beginning at a 5/8 inch iron rod set at the northwest corner of Lot 21 of Crestwood Allotment (Plat Cabinet A, Slide 319).

THENCE, with the north lines of Crestwood Allotment and the Larry Alan Harris 0.57 acre tract (O.R. 57, Pg. 871), S 85°-44'-58" E, a distance of 680.70 feet to a point on the center-line of U.S. Route 68 (varied width), passing a 5/8 inch iron rod set at 650.70 feet.

THENCE, with the center-line of U.S. Route 68, N 4°-34'-27" E, a distance of 442.62 feet to a point.

THENCE, with the south line of the said 1.498 acre tract and with a line of the William A. Verbsky original 70.026 acre tract (O.R. 474, Pg. 118), S 89°-46'-55" W, a distance of 410.16 feet to a 5/8 inch iron rod set at the TRUE POINT OF BEGINNING, passing a 5/8 inch iron rod set at 30.11 feet.

THENCE, with the south line of the said 1.498 acre tract and a line of the said 70.026 acre tract, S 89°-46'-55" W, a distance of 25.00 feet to a 5/8 inch iron rod set.

THENCE, with the west line of the said 1.498 acre tract and a line of the said 70.026 acre tract, N 4°-34'-27" E, a distance of 150.53 feet to a 5/8 inch iron rod set.

THENCE, with the north line of the said 1.498 acre tract and a line of the said 70.026 acre tract, N 89°-46'-55" E, a distance of 13.00 feet to a 5/8 inch iron rod set.

THENCE, S 0°-00'-06" W, a distance of 150.00 feet to the point of beginning.

Containing 0.065 acres.

The basis for bearings is the center-line of U.S. Route 68 being S 4°-34'-27" W, and all other bearings are from angles and distances measured in a field survey by Lee Surveying and Mapping Co., Inc. on November 2, 2000.

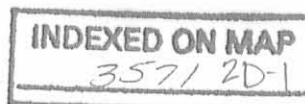
Description prepared by:



ORIGINAL STAMP IN GREEN

*Jeffrey I. Lee*  
Jeffrey I. Lee  
Professional Surveyor 6359  
September 9, 2001

L-3027



7-18-01 SMY ON  
**Lee Surveying and Mapping Co., Inc.**

Land Surveys • Topography • Subdivisions • Construction Layout

117 N. Madriver St.  
Bellefontaine OH 43311



Phone: (937) 593-7335  
Fax: (937) 593-7444

**VERBSKY  
1.433 ACRES**

Lying in Section 35, Town 5, Range 13, Liberty Township, Logan County, Ohio.

Being out of the Mark J. Verbsky 1.498 acre tract as deeded and described in Official Record 474, Page 98 of the Logan County Records of Deeds and being more particularly described as follows:

Beginning at a 5/8 inch iron rod set at the northwest corner of Lot 21 of Crestwood Allotment (Plat Cabinet A, Slide 319).

THENCE, with the north lines of Crestwood Allotment and the Larry Alan Harris 0.57 acre tract (O.R. 57, Pg. 871), S 85°-44'-58" E, a distance of 680.70 feet to a point on the center-line of U.S. Route 68 (varied width), passing a 5/8 inch iron rod set at 650.70 feet.

THENCE, with the center-line of U.S. Route 68, N 4°-34'-27" E, a distance of 442.62 feet to a point at the TRUE POINT OF BEGINNING.

THENCE, with the south line of the said 1.498 acre tract and with a line of the William A. Verbsky 70.026 acre tract (O.R. 474, Pg. 118), S 89°-46'-55" W, a distance of 410.16 feet to a 5/8 inch iron rod set, passing a 5/8 inch iron rod set at 30.11 feet.

THENCE, N 0°-00'-06" E, a distance of 150.00 feet to a 5/8 inch iron rod set.

THENCE, with the north line of the said 1.498 acre tract and a line of the said 70.026 acre tract, N 89°-46'-55" E, a distance of 422.16 feet to a point on the center-line of U.S. Route 68, passing a 5/8 inch iron rod set at 392.05 feet.

THENCE, with the center-line of U.S. Route 68, S 4°-34'-27" W, a distance of 150.53 feet to the place of beginning.

Containing 1.433 acres of which 0.104 acre is within the highway right-of-way.

The basis for bearings is the center-line of U.S. Route 68 being S 4°-34'-27" W, and all other bearings are from angles and distances measured in a field survey by Lee Surveying and Mapping Co., Inc. on November 2, 2000.

Description prepared by:

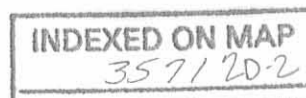


ORIGINAL STAMP IN GREEN

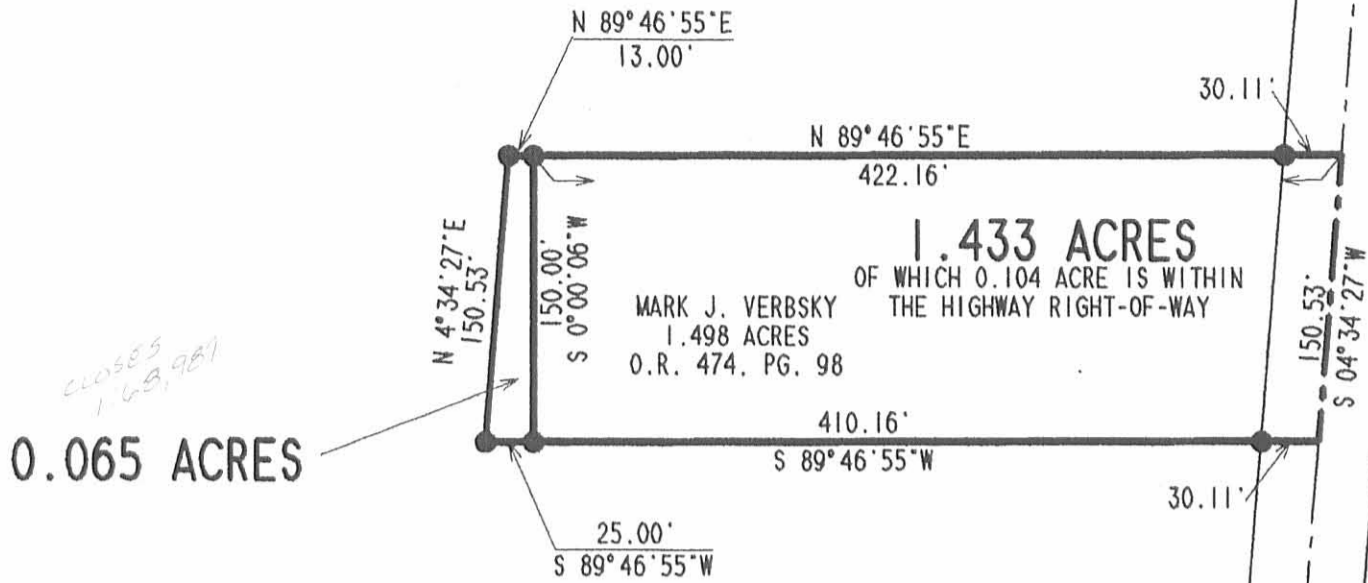
A handwritten signature in black ink, appearing to read 'Jeffrey I. Lee'.

Jeffrey I. Lee  
Professional Surveyor 6359  
November 8, 2000  
Revised September 9, 2001

L-3027



2009-18-01 SM OK



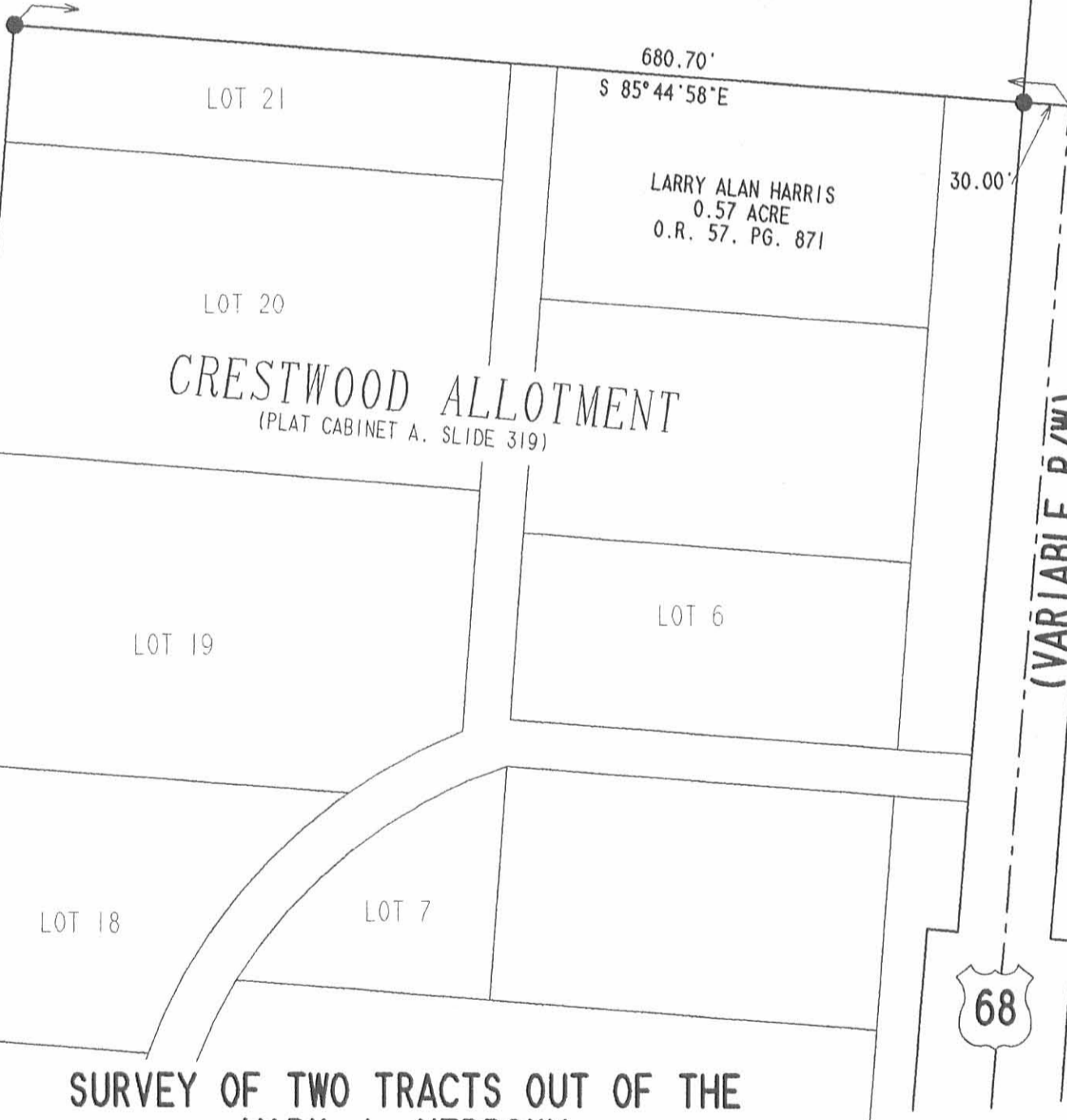
0.065 ACRES

CLOSES  
1-68, 987

WILLIAM A. VERBSKY  
AND JUDITH K. VERBSKY  
ORIG. 70.026 ACRES  
O.R. 474. PG. 118

MARK J. VERBSKY  
1.498 ACRES  
O.R. 474. PG. 98

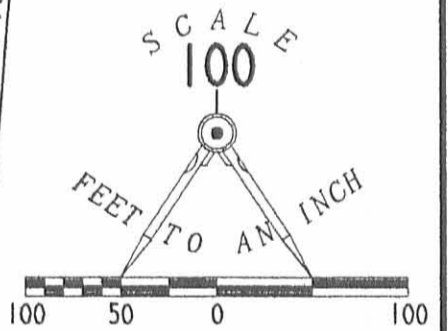
1.433 ACRES  
OF WHICH 0.104 ACRE IS WITHIN  
THE HIGHWAY RIGHT-OF-WAY



CRESTWOOD ALLOTMENT  
(PLAT CABINET A. SLIDE 319)

LARRY ALAN HARRIS  
0.57 ACRE  
O.R. 57. PG. 871

(VARIABLE R/W)



LEGEND:  
● 5/8 INCH IRON ROD SET

SURVEY OF TWO TRACTS OUT OF THE  
MARK J. VERBSKY  
1.498 ACRE TRACT  
OFFICIAL RECORD 474, PAGE 98  
SECTION 35, TOWN 5, RANGE 13  
LIBERTY TOWNSHIP  
LOGAN COUNTY, OHIO



SURVEYED BY:  
*Jeffrey I. Lee*  
JEFFREY I. LEE  
PROFESSIONAL SURVEYOR 6359  
NOVEMBER 2, 2000  
REVISED SEPTEMBER 5, 2001

COPYRIGHT 2000 BY:  
LEE SURVEYING & MAPPING CO., INC.  
117 North Madriver Street  
BELLEFONTAINE, OHIO 43311  
(937) 593-7335

2 WORKING DAYS  
**BEFORE YOU DIG**  
CALL TOLL FREE **800-362-2764**  
OHIO UTILITIES PROTECTION SERVICE.

INDEXED ON MAP ORIGINAL STAMP IN GREEN  
35712P

D-390 VERBSKY3 L-3027-3

RECEIVED 1-24-01 04:02

1/8

# Lee Surveying and Mapping Co., Inc.

Land Surveys • Topography • Subdivisions • Construction Layout

117 N. Madriver St.  
Bellefontaine OH 43311



Phone: (937) 593-7335  
Fax: (937) 593-7444

## VERBSKY 2.215 ACRES

Lying in Section 35, Town 5, Range 13, Liberty Township, Logan County, Ohio.

Being out of the William A. Verbsky 70.026 acre tract as deeded and described in Official Record 474, Page 118 of the Logan County Records of Deeds and being more particularly described as follows:

Beginning at a 5/8 inch iron rod set at the northwest corner of Lot 21 of Crestwood Allotment (Plat Cabinet A, Slide 319).

THENCE, with the north line of Lot 21, S 85°-44'-58" E, a distance of 247.05 feet to a 5/8 inch iron rod set at the TRUE POINT OF BEGINNING.

THENCE, N 4°-34'-27" E, a distance of 223.76 feet to a 5/8 inch iron rod set.

THENCE, S 85°-25'-33" E, a distance of 433.64 feet to a point on the center-line of U.S. Route 68, passing a 5/8 inch iron rod set at 403.64 feet.


THENCE, with the center-line of U.S. Route 68, S 4°-34'-27" W, a distance of 221.31 feet to a point.

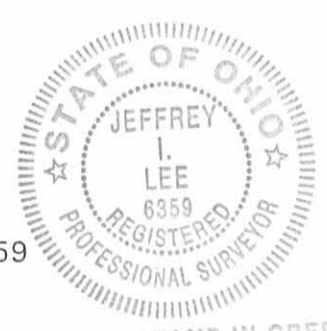
THENCE, with the north line of the Larry Alan Harris 0.57 acre tract (O.R. 57, Pg. 871) and the north line of Crestwood Allotment, N 85°-44'-58" W, a distance of 433.65 feet to the place of beginning, passing a 5/8 inch iron rod set at 31.50 feet.

Containing 2.215 acres of which 0.152 acre is within the highway right-of-way.

The basis for bearings is the center-line of U.S. Route 68 being S 4°-34'-27" W, and all other bearings are from angles and distances measured in a field survey by Lee Surveying and Mapping Co., Inc. on November 2, 2000.

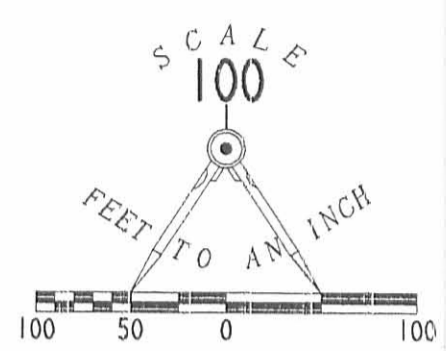
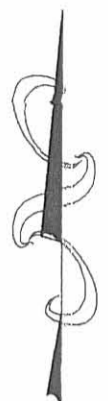
Description prepared by:

  
Jeffrey I. Lee  
Professional Surveyor 6359  
January 4, 2001

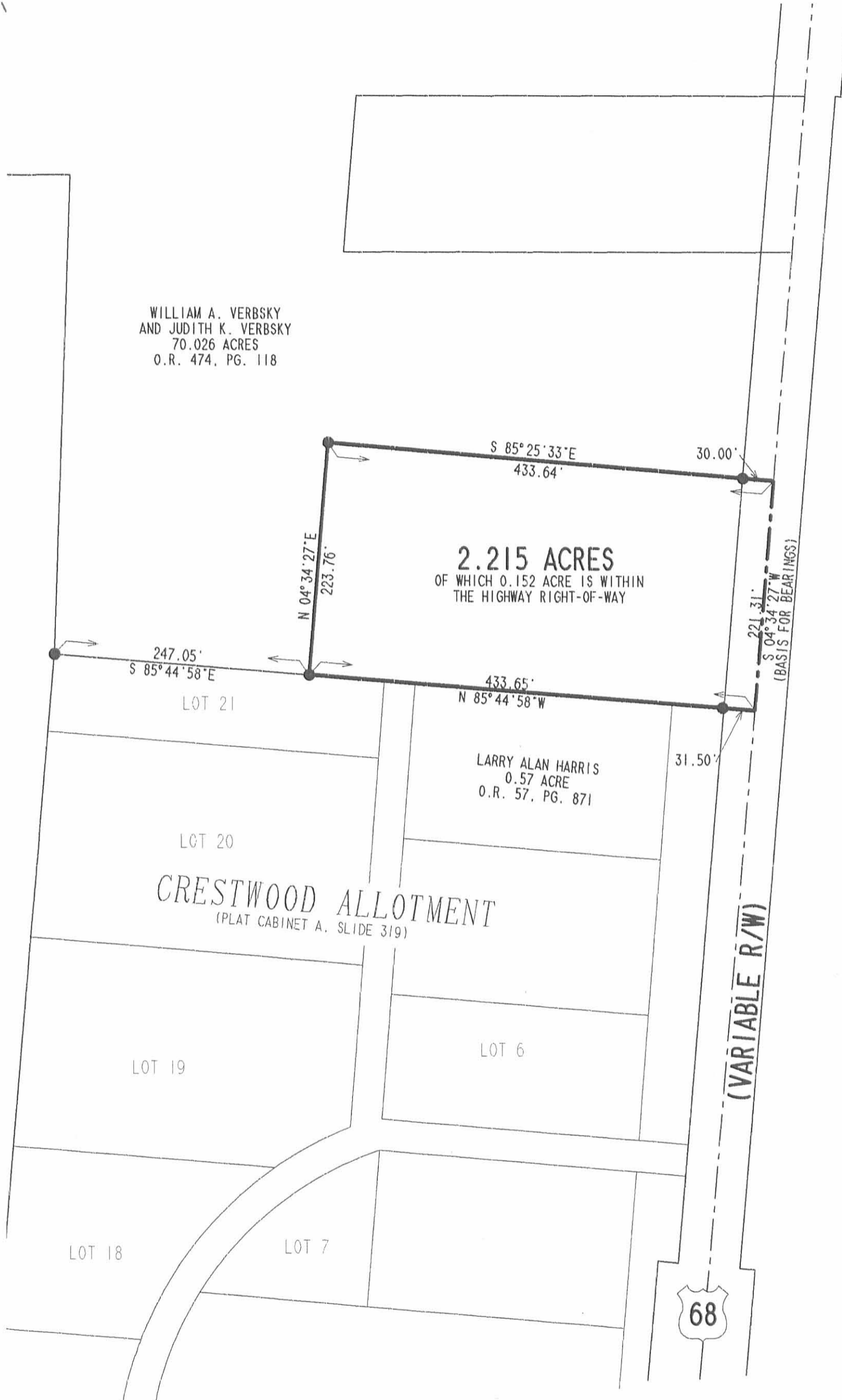


ORIGINAL STAMP IN GREEN L-3027

INDEXED ON MAP  
3571 3D



WILLIAM A. VERBSKY  
AND JUDITH K. VERBSKY  
70.026 ACRES  
O.R. 474, PG. 118



**2.215 ACRES**  
OF WHICH 0.152 ACRE IS WITHIN  
THE HIGHWAY RIGHT-OF-WAY

LARRY ALAN HARRIS  
0.57 ACRE  
O.R. 57, PG. 871

**CRESTWOOD ALLOTMENT**  
(PLAT CABINET A, SLIDE 319)

(VARIABLE R/W)



LEGEND:

- 5/8 INCH IRON ROD SET

**SURVEY OF 2.215 ACRES OUT OF THE  
WILLIAM A. VERBSKY  
ORIGINAL 70.026 ACRE TRACT  
OFFICIAL RECORD 474, PAGE 118  
SECTION 35, TOWN 5, RANGE 13  
LIBERTY TOWNSHIP  
LOGAN COUNTY, OHIO**

SURVEYED BY:

*Jeffrey I. Lee*  
JEFFREY I. LEE  
PROFESSIONAL SURVEYOR 6359  
JANUARY 4, 2001



ORIGINAL STAMP IN GREEN  
D-394

COPYRIGHT 2001 BY:  
**LEE SURVEYING & MAPPING CO., INC.**  
117 North Madriver Street  
BELLEFONTAINE, OHIO 43311  
(937) 593-7335

VERBSKY2  
VERBSKY.DAT

L-3027-3

2 WORKING DAYS  
**BEFORE YOU DIG**  
CALL TOLL FREE **800-362-2764**  
OHIO UTILITIES PROTECTION SERVICE.

INDEXED ON MAP  
3571 3P

REC'D 10-27-60 OMM OK ✓  
**Lee Surveying and Mapping Co., Inc.**

Land Surveys • Topography • Subdivisions • Construction Layout

117 N. Madriver St.  
Bellefontaine OH 43311



Phone: (937) 593-7335  
Fax: (937) 593-7444

**OELKER  
TRACT A  
41.673 ACRES**

Lying in Section 35, Town 5, Range 13, Liberty Township, Logan County, Ohio.

Being out of the Joe A. Oelker original 126.71 acre tract as deeded and described in Official Record 264, Page 963 of the Logan County Records of Deeds and being more particularly described as follows:

Beginning at a railroad spike found within the right-of-way of State Route 508 at the intersection of the center-lines of the original County Highway 191 and Township Road 188.

THENCE, with the center-line of Township Road 188 (60 feet wide), N 4°-08'00" E, a distance of 1545.13 feet to a railroad spike found.

THENCE, with the center-line of Township Road 188 the following seven courses:

N 4°-08'-00" E, a distance of 842.88 feet to a railroad spike found.

N 1°-28'-32" E, a distance of 200.00 feet to a 5/8 inch iron rod set.

N 18°-49'-33" W, a distance of 100.00 feet to a 3/4 inch iron rod found.

N 29°-04'-22" W, a distance of 260.74 feet to a railroad spike set.

N 29°-04'-22" W, a distance of 188.95 feet to a 5/8 inch iron rod found.

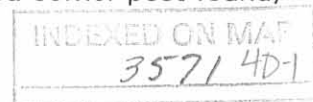
N 26°-27'-59" W, a distance of 499.50 feet to a 3/4 inch iron rod found.

N 29°-06'-09" W, a distance of 199.93 feet to a railroad spike set.

THENCE, S 88°-30'-10" E, a distance of 602.91 feet to a 5/8 inch iron rod set, passing a 5/8 inch iron rod set at 34.85 feet.

THENCE, N 00°-44'-46" W, a distance of 109.05 feet to a 5/8 inch iron rod set at the TRUE POINT OF BEGINNING.

THENCE, N 00°-44'-46" W, a distance of 329.36 feet to a 6 inch wood corner post found, passing a 5/8 inch iron rod set at 327.36 feet.





# Lee Surveying and Mapping Co., Inc.

Land Surveys • Topography • Subdivisions • Construction Layout

117 N. Madriver St.  
Bellefontaine OH 43311



Phone: (937) 593-7335  
Fax: (937) 593-7444

THENCE, with the west line of Crestwood Allotment, S 4°-36'-11" W, a distance of 1805.62 feet to a 5/8 inch iron rod found in concrete.

THENCE, with the west line of the George J. Hresco 3.33 acre tract (O.R. 427, Pg. 817), S 4°-43'-08" W, a distance of 199.37 feet to a 6 inch wood corner post found.

THENCE, with the north line of the William A. Verbsky 14.197 acre tract (O.R. 190, Pg. 952), N 84°-01'-26" W, a distance of 308.41 feet to a 5/8 inch iron rod found, passing a reference 5/8 inch iron rod set at 3.00 feet.

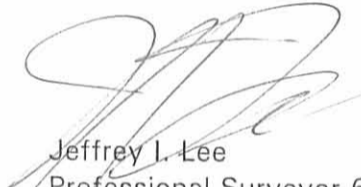
THENCE, with the east line of the Myron D. McCollum 1.022 acre tract (O.R. 367, Pg. 589), N 4°-08'-00" E, a distance of 150.00 feet to a 5/8 inch iron rod found.

THENCE, with the north line of the said 1.022 acre tract, N 84°-01'-27" W, a distance of 296.83 feet to the place of beginning, passing a 5/8 inch iron rod found at 266.81 feet.

Containing 92.360 acres of which 2.665 acres are within the highway rights-of-way.

The basis for bearings is the center-line of Township Road 188 at State Route 508 being N 4°-08'-00" E, and all other bearings are from angles and distances measured in a field survey by Lee Surveying and Mapping Co., Inc. on October 6, 2000.

Description prepared by:

  
Jeffrey I. Lee  
Professional Surveyor 6359  
October 13, 2000



ORIGINAL STAMP IN GREEN

L-3027

ON MAP  
3571 4D-10

# Lee Surveying and Mapping Co., Inc.

Land Surveys • Topography • Subdivisions • Construction Layout

117 N. Madriver St.  
Bellefontaine OH 43311



Phone: (937) 593-7335  
Fax: (937) 593-7444

THENCE, with the east line and the east line extended of the Richard G. Oelker, Trustee of the Richard G. Oelker Trust 7.75 acre tract (O.R. 431, Pg. 876), N 1°-04'-03" E, a distance of 1238.67 feet to a 5/8 inch iron rod set.

THENCE, with the south line of the David Max Hartzler 46.84 acre tract (Vol. 345, Pg. 218, Tract II), S 85°-05'-50" E, a distance of 865.96 feet to a 5/8 inch iron rod set.

THENCE, with the west lines of the Gary W. Richardson 2.240 acre tract (O.R. 402, Pg. 528) and the Gary W. Richardson 1.73 acre tract (O.R. 408, Pg. 778), S 3°-43'-40" W, a distance of 493.48 feet to a 5/8 inch iron rod found.

THENCE, with the south lines of the said 1.73 acre tract, the Richard L. Core 0.32 acre tract (Vol. 405, Pg. 350, Tract I) and the Richard L. Martin 0.61 acre tract (O.R. 237, Pg. 399), N 88°-04'-14" E, a distance of 607.97 feet to a point on the center-line of U.S. Route 68 (variable R/W), passing a 5/8 inch iron rod set at 577.78 feet.

THENCE, with the center-line of U.S. Route 68, S 4°-34'-27" W, a distance of 941.56 feet to a point on the said center-line.

THENCE, S 89°-46'-55" W, a distance of 709.43 feet to a 5/8 inch iron rod set, passing a 5/8 inch iron rod set at 30.11 feet.

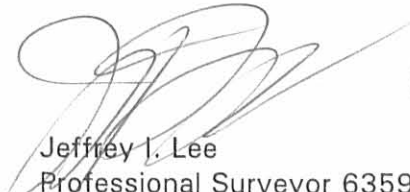
THENCE, S 1°-46'-42" W, a distance of 75.79 feet to a 5/8 inch iron rod set.

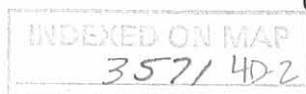
THENCE, S 89°-35'-23" W, a distance of 670.27 feet to the place of beginning.

Containing 41.673 acres of which 0.648 acre is within the highway right-of-way.

The basis for bearings is the center-line of Township Road 188 at State Route 508 being N 4°-08'-00" E, and all other bearings are from angles and distances measured in a field survey by Lee Surveying and Mapping Co., Inc. on October 6, 2000.

Description prepared by:

  
Jeffrey I. Lee  
Professional Surveyor 6359  
October 13, 2000



ORIGINAL STAMP IN GREEN L-3027

REC'D 10-27-00 SWM OK ✓

# Lee Surveying and Mapping Co., Inc.

Land Surveys • Topography • Subdivisions • Construction Layout

117 N. Madriver St.  
Bellefontaine OH 43311



Phone: (937) 593-7335  
Fax: (937) 593-7444

## OELKER TRACT B 9.016 ACRES

Lying in Section 35, Town 5, Range 13, Liberty Township, Logan County, Ohio.

Being out of the Joe A. Oelker original 126.71 acre tract as deeded and described in Official Record 264, Page 963 of the Logan County Records of Deeds and being more particularly described as follows:

Beginning at a railroad spike found within the right-of-way of State Route 508 at the intersection of the center-lines of the original County Highway 191 and Township Road 188.

THENCE, with the center-line of Township Road 188 (60 feet wide), N 4°-08'00" E, a distance of 1545.13 feet to a railroad spike found.

THENCE, with the center-line of Township Road 188 the following seven courses:

N 4°-08'-00" E, a distance of 842.88 feet to a railroad spike found.

N 1°-28'-32" E, a distance of 200.00 feet to a 5/8 inch iron rod set.

N 18°-49'-33" W, a distance of 100.00 feet to a 3/4 inch iron rod found.

N 29°-04'-22" W, a distance of 260.74 feet to a railroad spike set.

N 29°-04'-22" W, a distance of 188.95 feet to a 5/8 inch iron rod found.

N 26°-27'-59" W, a distance of 499.50 feet to a 3/4 inch iron rod found.

N 29°-06'-09" W, a distance of 199.93 feet to a railroad spike set.

THENCE, S 88°-30'-10" E, a distance of 602.91 feet to a 5/8 inch iron rod set, passing a 5/8 inch iron rod set at 34.85 feet.

THENCE, N 00°-44'-46" W, a distance of 109.05 feet to a 5/8 inch iron rod set.

THENCE, N 89°-35'-23" E, a distance of 670.27 feet to a 5/8 inch iron rod set.

THENCE, N 1°46'-42" E, a distance of 75.79 feet to a 5/8 inch iron rod set at the TRUE POINT OF BEGINNING.

INDEXED  
357/40-3

# Lee Surveying and Mapping Co., Inc.

Land Surveys • Topography • Subdivisions • Construction Layout

117 N. Madriver St.  
Bellefontaine OH 43311



Phone: (937) 593-7335  
Fax: (937) 593-7444

THENCE, N 89°-46'-55" E, a distance of 709.43 feet to a point on the center-line of U.S. Route 68 (variable R/W), passing a 5/8 inch iron rod set at 679.32 feet.

THENCE, with the center-line of U.S. Route 68, S 4°-34'-27" W, a distance of 593.15 feet to a point.

THENCE, with the north lines of the Larry Alan Harris 0.57 acre tract (O.R. 57, Pg. 871) and Lot 21 of Crestwood Allotment (Plat Cabinet A, Slide 319), N 85°-44'-58" W, a distance of 680.70 feet to a 5/8 inch iron rod set, passing a 5/8 inch iron rod set at 31.50 feet.

THENCE, N 1°-46'-42" E, a distance of 538.37 feet to the place of beginning.

Containing 9.016 acres of which 0.408 acre is within the highway right-of-way.

The basis for bearings is the center-line of Township Road 188 at State Route 508 being N 4°-08'-00" E, and all other bearings are from angles and distances measured in a field survey by Lee Surveying and Mapping Co., Inc. on October 6, 2000.

Description prepared by:

A handwritten signature in black ink, appearing to read 'J. Lee', is written over the typed name and title.

Jeffrey I. Lee  
Professional Surveyor 6359  
October 13, 2000



L-3027



RC 10-30-00 for or

# Lee Surveying and Mapping Co., Inc.

Land Surveys • Topography • Subdivisions • Construction Layout

117 N. Madriver St.  
Bellefontaine OH 43311



Phone: (937) 593-7335  
Fax: (937) 593-7444

## OELKER TRACT C 20.836 ACRES

Lying in Section 35, Town 5, Range 13, Liberty Township, Logan County, Ohio.

Being out of the Joe A. Oelker original 126.71 acre tract as deeded and described in Official Record 264, Page 963 of the Logan County Records of Deeds and being more particularly described as follows:

Beginning at a railroad spike found within the right-of-way of State Route 508 at the intersection of the center-lines of the original County Highway 191 and Township Road 188.

THENCE, with the center-line of Township Road 188 (60 feet wide), N 4°-08'00" E, a distance of 1545.13 feet to a railroad spike found.

THENCE, with the center-line of Township Road 188 the following four courses:

N 4°-08'-00" E, a distance of 842.88 feet to a railroad spike found.

N 1°-28'-32" E, a distance of 200.00 feet to a 5/8 inch iron rod set.

N 18°-49'-33" W, a distance of 100.00 feet to a 3/4 inch iron rod found.

N 29°-04'-22" W, a distance of 260.74 feet to a railroad spike set at the TRUE POINT OF BEGINNING.

THENCE, with the center-line of Township Road 188 the following three courses:

N 29°-04'-22" W, a distance of 188.95 feet to a 5/8 inch iron rod found.

N 26°-27'-59" W, a distance of 499.50 feet to a 3/4 inch iron rod found.

N 29°-06'-09" W, a distance of 199.93 feet to a railroad spike set.

THENCE, S 88°-30'-10" E, a distance of 602.91 feet to a 5/8 inch iron rod set, passing a 5/8 inch iron rod set at 34.85 feet.

THENCE, N 00°-44'-46" W, a distance of 109.05 feet to a 5/8 inch iron rod set.

THENCE, N 89°-35'-23" E, a distance of 670.27 feet to a 5/8 inch iron rod set.



# Lee Surveying and Mapping Co., Inc.

Land Surveys • Topography • Subdivisions • Construction Layout

117 N. Madriver St.  
Bellefontaine OH 43311



Phone: (937) 593-7335  
Fax: (937) 593-7444

THENCE, S 1°46'-42" W, a distance of 462.58 feet to a 5/8 inch iron rod set.

THENCE, with the west line of Crestwood Allotment (Plat Cabinet A, Slide 319),  
S 4°-36'-11" W, a distance of 489.20 feet to a 5/8 inch iron rod set.

THENCE, N 85°-23'-49" W, a distance of 808.86 feet to the place of beginning, passing a 5/8  
inch iron rod set at 772.81 feet.

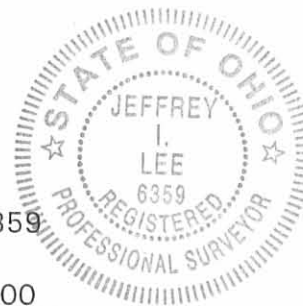
Containing 20.836 acres of which 0.613 acre is within the highway right-of-way.

The basis for bearings is the center-line of Township Road 188 at State Route 508 being  
N 4°-08'-00" E, and all other bearings are from angles and distances measured in a field survey by  
Lee Surveying and Mapping Co., Inc. on October 6, 2000.

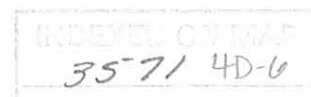
Description prepared by:

A handwritten signature in black ink, appearing to read 'J. Lee', is written over the printed name and title.

Jeffrey I. Lee  
Professional Surveyor 6359  
October 13, 2000  
Revised: October 27, 2000



ORIGINAL STAMP IN GREEN L-3027



REC'D 10-27-00 SWY OK ✓

# Lee Surveying and Mapping Co., Inc.

Land Surveys • Topography • Subdivisions • Construction Layout

117 N. Madriver St.  
Bellefontaine OH 43311



Phone: (937) 593-7335  
Fax: (937) 593-7444

## OELKER TRACT D 20.836 ACRES

Lying in Section 35, Town 5, Range 13, Liberty Township, Logan County, Ohio.

Being out of the Joe A. Oelker original 126.71 acre tract as deeded and described in Official Record 264, Page 963 of the Logan County Records of Deeds and being more particularly described as follows:

Beginning at a railroad spike found within the right-of-way of State Route 508 at the intersection of the center-lines of the original County Highway 191 and Township Road 188.

THENCE, with the center-line of Township Road 188 (60 feet wide), N 4°-08'00" E, a distance of 1545.13 feet to a railroad spike found at the TRUE POINT OF BEGINNING.

THENCE, with the center-line of Township Road 188 the following four courses:

N 4°-08'-00" E, a distance of 842.88 feet to a railroad spike found.

N 1°-28'-32" E, a distance of 200.00 feet to a 5/8 inch iron rod set.

N 18°-49'-33" W, a distance of 100.00 feet to a 3/4 inch iron rod found.

N 29°-04'-22" W, a distance of 260.74 feet to a railroad spike set.

THENCE, S 85°-23'-49" E, a distance of 808.86 feet to a 5/8 inch iron rod set, passing a 5/8 inch iron rod set at 36.05 feet.

THENCE, with the west line of Crestwood Allotment (Plat Cabinet A, Slide 319), S 4°-36'-11" W, a distance of 1316.42 feet to a 5/8 inch iron rod found in concrete.

THENCE, with the west line of the George J. Hresco 3.33 acre tract (O.R. 427, Pg. 817), S 4°-43'-08" W, a distance of 199.37 feet to a 6 inch wood corner post found.

THENCE, with the north line of the William A. Verbsky 14.197 acre tract (O.R. 190, Pg. 952), N 84°-01'-26" W, a distance of 308.41 feet to a 5/8 inch iron rod found, passing a reference 5/8 inch iron rod set at 3.00 feet.

THENCE, with the east line of the Myron D. McCollum 1.022 acre tract (O.R. 367, Pg. 589), N 4°-08'-00" E, a distance of 150.00 feet to a 5/8 inch iron rod found.

INDEXED ON MAP  
3571407

# Lee Surveying and Mapping Co., Inc.

Land Surveys • Topography • Subdivisions • Construction Layout

117 N. Madriver St.  
Bellefontaine OH 43311



Phone: (937) 593-7335  
Fax: (937) 593-7444

THENCE, with the north line of the said 1.022 acre tract, N 84°-01'-27" W, a distance of 296.83 feet to the place of beginning, passing a 5/8 inch iron rod found at 266.81 feet.

Containing 20.836 acres of which 0.996 acre is within the highway right-of-way.

The basis for bearings is the center-line of Township Road 188 at State Route 508 being N 4°-08'-00" E, and all other bearings are from angles and distances measured in a field survey by Lee Surveying and Mapping Co., Inc. on October 6, 2000.

Description prepared by:

A handwritten signature in black ink, appearing to read 'J. Lee', is written over the typed name and title.

Jeffrey I. Lee  
Professional Surveyor 6359  
October 13, 2000



L-3027

ORIGINAL STAMP IN GREEN

INDEXED ON MAP  
357/ 4D-8



# Lee Surveying and Mapping Co., Inc.

Land Surveys • Topography • Subdivisions • Construction Layout

117 N. Madriver St.  
Bellefontaine OH 43311



Phone: (937) 593-7335  
Fax: (937) 593-7444

## OELKER 92.361 ACRES

Lying in Section 35, Town 5, Range 13, Liberty Township, Logan County, Ohio.

Being out of the Joe A. Oelker original 126.71 acre tract as deeded and described in Official Record 264, Page 963 of the Logan County Records of Deeds and being more particularly described as follows:

Beginning at a railroad spike found within the right-of-way of State Route 508 at the intersection of the center-lines of the original County Highway 191 and Township Road 188.

THENCE, with the center-line of Township Road 188 (60 feet wide), N 4°-08'00" E, a distance of 1545.13 feet to a railroad spike found at the TRUE POINT OF BEGINNING.

THENCE, with the center-line of Township Road 188 the following six courses:

N 4°-08'-00" E, a distance of 842.88 feet to a railroad spike found.

N 1°-28'-32" E, a distance of 200.00 feet to a 5/8 inch iron rod set.

N 18°-49'-33" W, a distance of 100.00 feet to a 3/4 inch iron rod found.

N 29°-04'-22" W, a distance of 449.69 feet to a 5/8 inch iron rod found.

N 26°-27'-59" W, a distance of 499.50 feet to a 3/4 inch iron rod found.

N 29°-06'-09" W, a distance of 199.93 feet to a railroad spike set.

THENCE, S 88°-30'-10" E, a distance of 602.91 feet to a 5/8 inch iron rod set, passing a 5/8 inch iron rod set at 34.85 feet.

THENCE, N 00°-44'-46" W, a distance of 438.41 feet to a 6 inch wood corner post found, passing a 5/8 inch iron rod set at 436.42 feet.

THENCE, with the east line and the east line extended of the Richard G. Oelker, Trustee of the Richard G. Oelker trust 7.75 acre tract (O.R. 431, Pg. 876), N 1°-04'-03" E, a distance of 1238.67 feet to a 5/8 inch iron rod set.

THENCE, with the south line of the David Max Hartzler 46.84 acre tract (Vol. 345, Pg. 218, Tract II), S 85°-05'-50" E, a distance of 865.96 feet to a 5/8 inch iron rod set.

THENCE, with the west lines of the Gary W. Richardson 2.240 acre tract (O.R. 402, Pg. 528) and the Gary W. Richardson 1.73 acre tract (O.R. 408, Pg. 778), S 3°-43'-40" W, a distance of 493.48 feet to a 5/8 inch iron rod found.

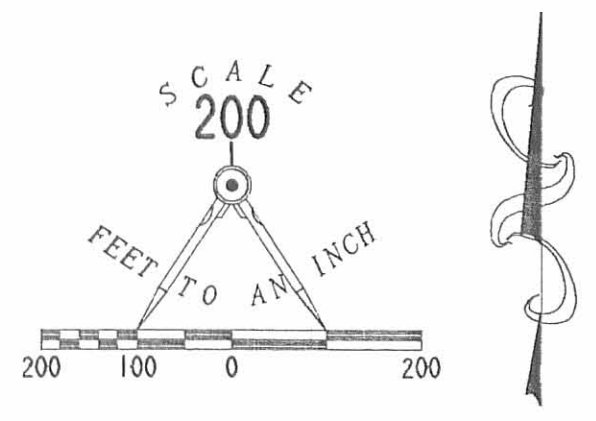
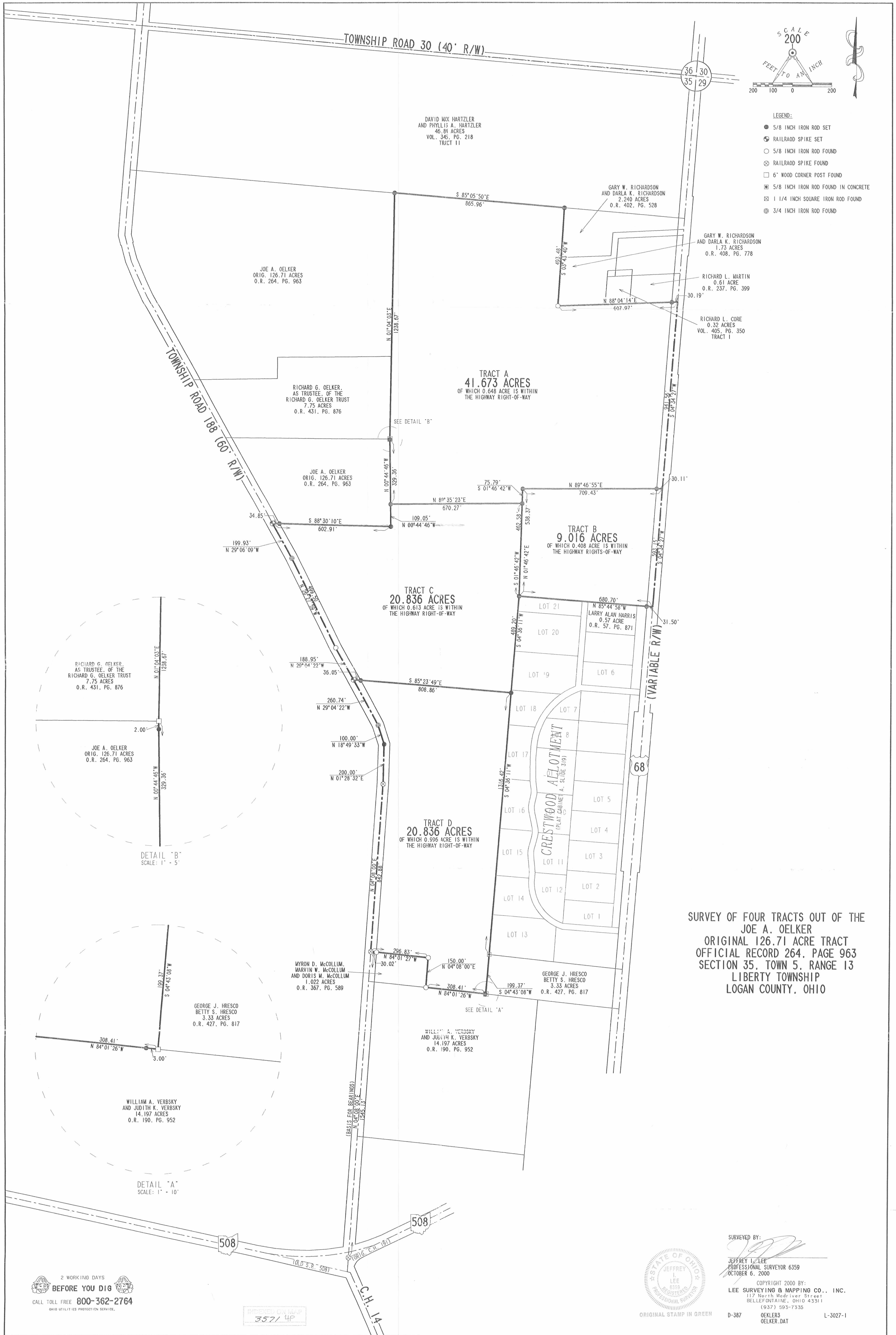
THENCE, with the south lines of the said 1.73 acre tract, the Richard L. Core 0.32 acre tract (Vol. 405, Pg. 350, Tract I) and the Richard L. Martin 0.61 acre tract (O.R. 237, Pg. 399), N 88°-04'-14" E, a distance of 607.97 feet to a point on the center-line of U.S. Route 68 (variable R/W), passing a 5/8 inch iron rod set at 577.78 feet.

THENCE, with the center-line of U.S. Route 68, S 4°-34'-27" W, a distance of 1534.71 feet to a point on the said center-line.

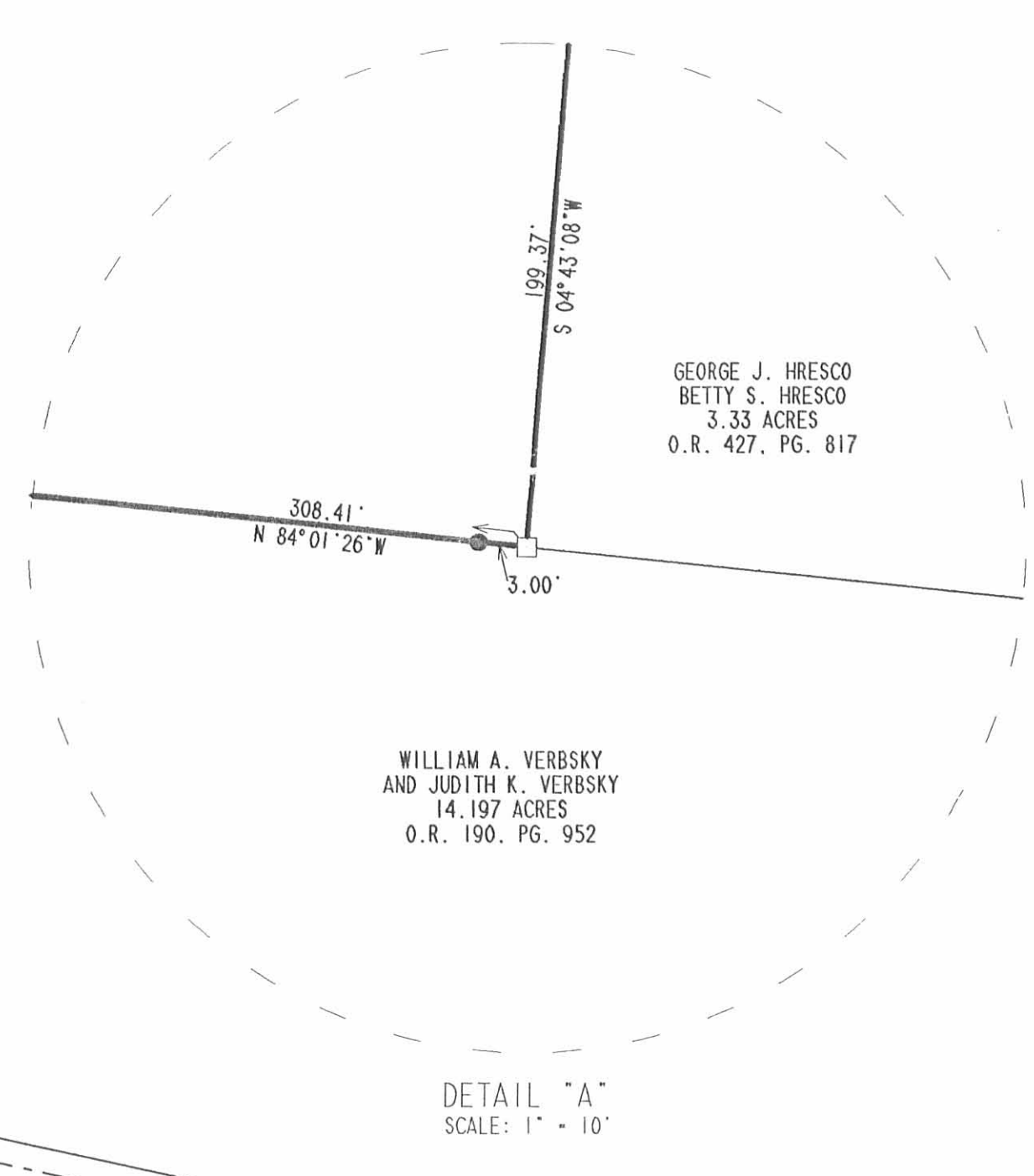
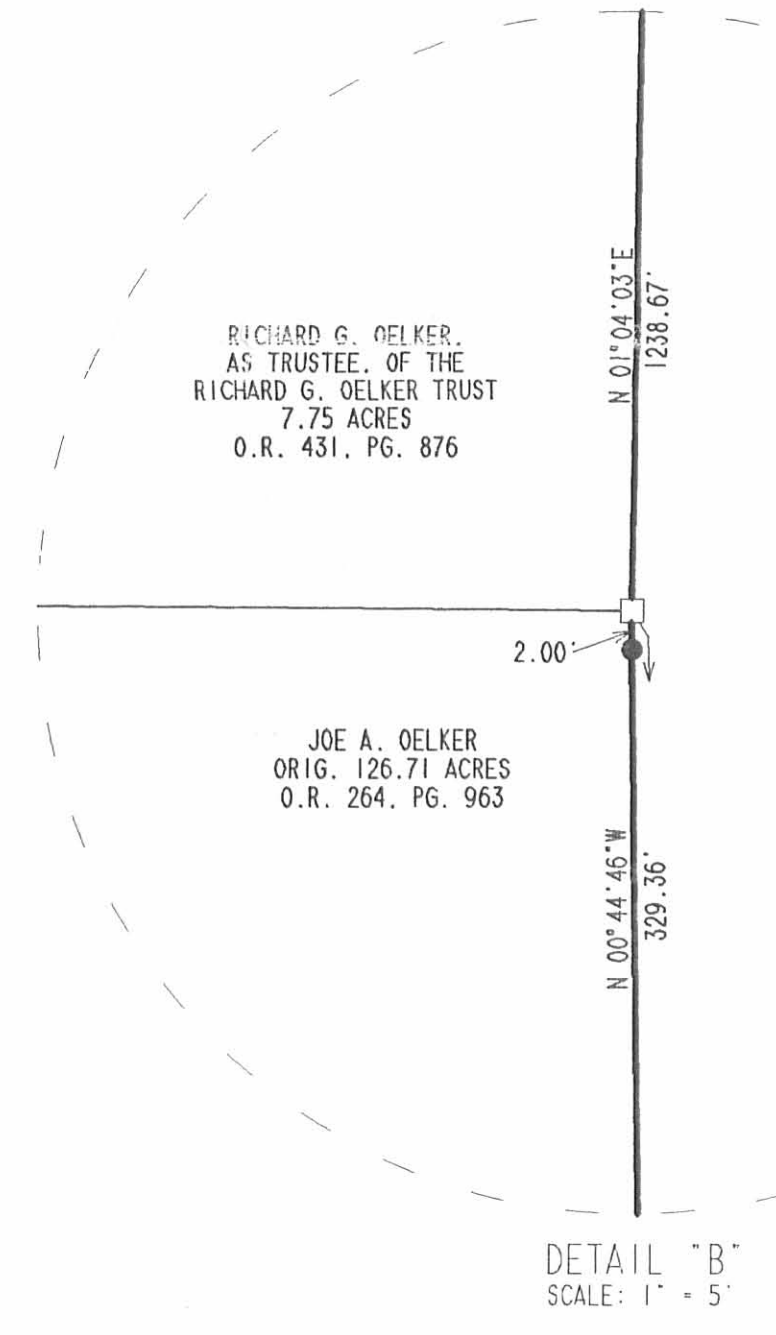
THENCE, with the north lines of the Larry Alan Harris 0.57 acre tract (O.R. 57, Pg. 871) and Crestwood Allotment (Plat Cabinet A, Slide 319), N 85°-44'-58" W, a distance of 680.70 feet to a 5/8 inch iron rod set, passing a 5/8 inch iron rod set at 31.50 feet.

INDEXED ON MAP  
352/4D-9

REVISED 10-27-00 SWY OK



- LEGEND:**
- 5/8 INCH IRON ROD SET
  - ⊕ RAILROAD SPIKE SET
  - 5/8 INCH IRON ROD FOUND
  - ⊙ RAILROAD SPIKE FOUND
  - 6" WOOD CORNER POST FOUND
  - ⊗ 5/8 INCH IRON ROD FOUND IN CONCRETE
  - ⊠ 1 1/4 INCH SQUARE IRON ROD FOUND
  - ⊕ 3/4 INCH IRON ROD FOUND



**SURVEY OF FOUR TRACTS OUT OF THE  
JOE A. OELKER  
ORIGINAL 126.71 ACRE TRACT  
OFFICIAL RECORD 264, PAGE 963  
SECTION 35, TOWN 5, RANGE 13  
LIBERTY TOWNSHIP  
LOGAN COUNTY, OHIO**

SURVEYED BY:  
*Jeffrey I. Lee*  
JEFFREY I. LEE  
PROFESSIONAL SURVEYOR 6359  
OCTOBER 6, 2000

COPYRIGHT 2000 BY:  
LEE SURVEYING & MAPPING CO., INC.  
117 North Madison Street  
BELLEFONTAINE, OHIO 43311  
(937) 593-7335



ORIGINAL STAMP IN GREEN

2 WORKING DAYS  
**BEFORE YOU DIG**  
CALL TOLL FREE 800-362-2764  
OHIO UTILITIES PROTECTION SERVICE.

INDEXED G.M.P.  
3571 4P

D-387 OELKER3 OELKER.DAT L-3027-1

# Lee Surveying and Mapping Co., Inc.

Land Surveys • Topography • Subdivisions • Construction Layout

117 N. Madriver St.  
Bellefontaine OH 43311



Phone: (937) 593-7335  
Fax: (937) 593-7444

## OELKER 1.498 ACRES

Lying in Section 35, Town 5, Range 13, Liberty Township, Logan County, Ohio.

Being out of the Joe A. Oelker original 126.71 acre tract as deeded and described in Official Record 264, Page 963 of the Logan County Records of Deeds and being more particularly described as follows:

Beginning at a 5/8 inch iron rod set at the northwest corner of Lot 21 of Crestwood Allotment (Plat Cabinet A, Slide 319).

THENCE, with the north line of the Crestwood Allotment and the north line of the Larry Alan Harris 0.57 acre tract (O.R. 57, Pg. 871), S 85°-44'-58" E, a distance of 680.70 feet to a point on the center-line of U.S. Route 68 (variable R/W), passing a 5/8 inch iron rod set at 650.70 feet.

THENCE, with the center-line of U.S. Route 68, N 4°-34'-27" E, a distance of 442.62 feet to a point at the TRUE POINT OF BEGINNING.

THENCE, S 89°-46'-55" W, a distance of 435.16 feet to a 5/8 inch iron rod set, passing a 5/8 inch iron rod set at 30.11 feet.

THENCE, N 4°-34'-27" E, a distance of 150.53 feet to a 5/8 inch iron rod set.

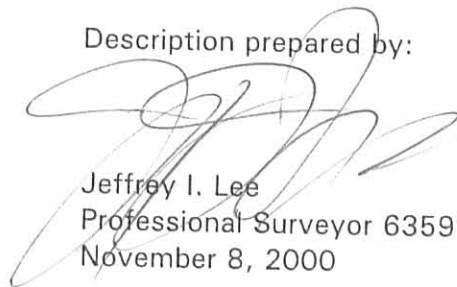
THENCE, N 89°-46'-55" E, a distance of 435.16 feet to a point on the center-line of U.S. Route 68, passing a 5/8 inch iron rod set at 405.05 feet.

THENCE, with the center-line of U.S. Route 68, S 4°-34'-27" W, a distance of 150.53 feet to the place of beginning.

Containing 1.498 acres of which 0.104 acre is within the highway right-of-way.

The basis for bearings is the center-line of U.S. Route 68 being S 4°-34'-27" W, and all other bearings are from angles and distances measured in a field survey by Lee Surveying and Mapping Co., Inc. on November 2, 2000.

Description prepared by:

  
Jeffrey I. Lee  
Professional Surveyor 6359  
November 8, 2000



ORIGINAL STAMP IN GREEN L-3027

357/ 5D-1

REC'D 11-14-00 8MM ak ✓

# Lee Surveying and Mapping Co., Inc.

Land Surveys • Topography • Subdivisions • Construction Layout

117 N. Madriver St.  
Bellefontaine OH 43311



Phone: (937) 593-7335  
Fax: (937) 593-7444

## OELKER 7.517 ACRES

Lying in Section 35, Town 5, Range 13, Liberty Township, Logan County, Ohio.

Being out of the Joe A. Oelker original 126.71 acre tract as deeded and described in Official Record 264, Page 963 of the Logan County Records of Deeds and being more particularly described as follows:

Beginning at a 5/8 inch iron rod set at the northwest corner of Lot 21 of Crestwood Allotment (Plat Cabinet A, Slide 319).

THENCE, N 1°-46'-42" E, a distance of 538.37 feet to a 5/8 inch iron rod set.

THENCE, N 89°-46'-55" E, a distance of 274.27 feet to a 5/8 inch iron rod set.

THENCE, S 4°-34'-27" W, a distance of 150.53 feet to a 5/8 inch iron rod set.

THENCE, N 89°-46'-55" E, a distance of 435.16 feet to a point on the center-line of U.S. Route 68, passing a 5/8 inch iron rod set at 405.05 feet.


THENCE, with the center-line of U.S. Route 68, S 4°-34'-27" W, a distance of 442.62 feet to a point.

THENCE, with the north line of the Larry Alan Harris 0.57 acre tract (O.R. 57, Pg. 871) and the north line of Crestwood Allotment, N 85°-44'-58" W, a distance of 680.70 feet to the place of beginning, passing a 5/8 inch iron rod set at 30.00 feet.

Containing 7.517 acres of which 0.304 acre is within the highway right-of-way.

The basis for bearings is the center-line of U.S. Route 68 being S 4°-34'-27" W, and all other bearings are from angles and distances measured in a field survey by Lee Surveying and Mapping Co., Inc. on November 2, 2000.

Description prepared by:

  
Jeffrey I. Lee  
Professional Surveyor 6359  
November 8, 2000

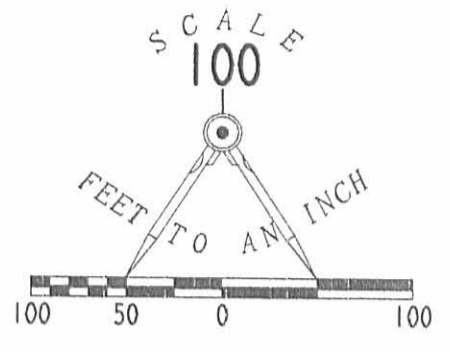
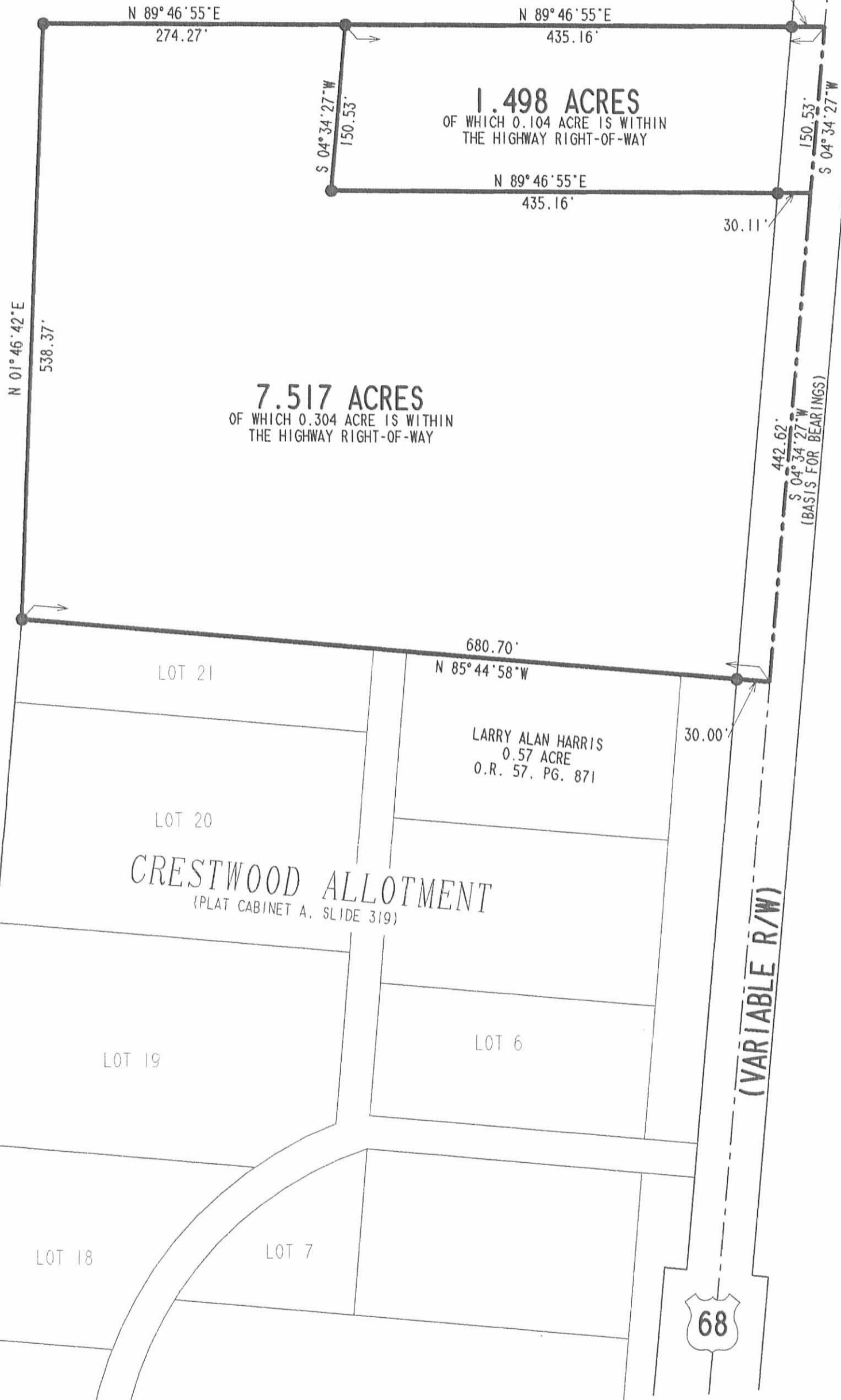


L-3027

35715D-2

REC'D 11-14-00 SMYAK ✓

JOE A. OELKER  
ORIG. 126.71 ACRE  
O.R. 264, PG. 063



LEGEND:  
● 5/8 INCH IRON ROD SET

SURVEY OF TWO TRACTS OUT OF THE  
JOE A. OELKER  
ORIGINAL 126.71 ACRE TRACT  
OFFICIAL RECORD 264, PAGE 963  
SECTION 35, TOWN 5, RANGE 13  
LIBERTY TOWNSHIP  
LOGAN COUNTY, OHIO

SURVEYED BY:

JEFFREY I. LEE  
PROFESSIONAL SURVEYOR 6359  
NOVEMBER 2, 2000



COPYRIGHT 2000 BY:  
**LEE SURVEYING & MAPPING CO., INC.**  
117 North Madriver Street  
BELLEFONTAINE, OHIO 43311  
(937) 593-7335

2 WORKING DAYS  
**BEFORE YOU DIG**  
CALL TOLL FREE **800-362-2764**  
OHIO UTILITIES PROTECTION SERVICE.

3571 5P

ORIGINAL STAMP IN GREEN

D-390

VERBSKY

L-3027-3

Berry Survey Liberty Township June 1963 134.46 Acres

The following described land in Liberty Township, Logan County, Ohio and being in Section 35 Town 5 Range 13

Beginning at a small iron in the center line of U.S.Route Number 68 ( State Highway Number 189 ) at the S.E. corner of Paul M. Bradley's 6.38 acre tract and said beginning point being Station 98 plus 69 of said State Highway Number 189 as shown on Logan County Road Plan M - 40

Thence with the center line of said State Highway Number 189 S 4 - 47 W. 1534.00 feet to a small iron at the N.E. corner of Charles Harris 1.14 acre tract.

Thence with the north side of said Harris tract and with the north side of Crestwood Allotment N. 85 - 34 W. 681.00 feet to a wood post.

Thence with the west side of Crestwood Allotment and the west side of William L. Hollinger 3.33 acre tract S. 4 --20 W. 2006.00 feet to a wood post in the north line of Martha A. Byler 40.55 acre tract.

Thence with said Byler's north line N. 83 - 58 W. 602.00 feet to an iron in the center of County Road Number 188.

Thence with the center line of said Road Number 188 the following nine courses and distances :-

N. 4 - 08 E. 992.00 feet to an iron.

N. 0 - 41 W. 200.00 feet to an iron.

N. 14 - 43 W. 100.00 feet to an iron.

N. 29 - 08 W. 450.00 feet to an iron.

N. 26 - 32 W. 500.00 feet to an iron.

N. 29 - 12 W. 1500.00 feet to an iron.

N. 24 - 04 W. 200.00 feet to an iron.

N. 14 -- 09 W. 136.00 feet to an iron

N. 4 - 45 E. 327.60 feet to an iron at the S.W. corner of B. Leonard Yoder's 44.89 acre tract.

Thence with the south line of said Yoder 44.89 acre tract S. 85 - 15 E. 2208.00 feet to a wood post at the N.W. corner of Paul M. Bradley's 6.38 acre tract.



3571  
60-1

( Berry survey continued )

Thence with the west side of said Bradley 6.38 acre tract s. 4 - 10 W.  
495.00 feet to a wood post.

Thence with the south side of said Bradley 6.38 acre tract  
N. 88 - 20 E. 608.00 feet to the place of beginning.

The above described tract contains 134.46 acres.

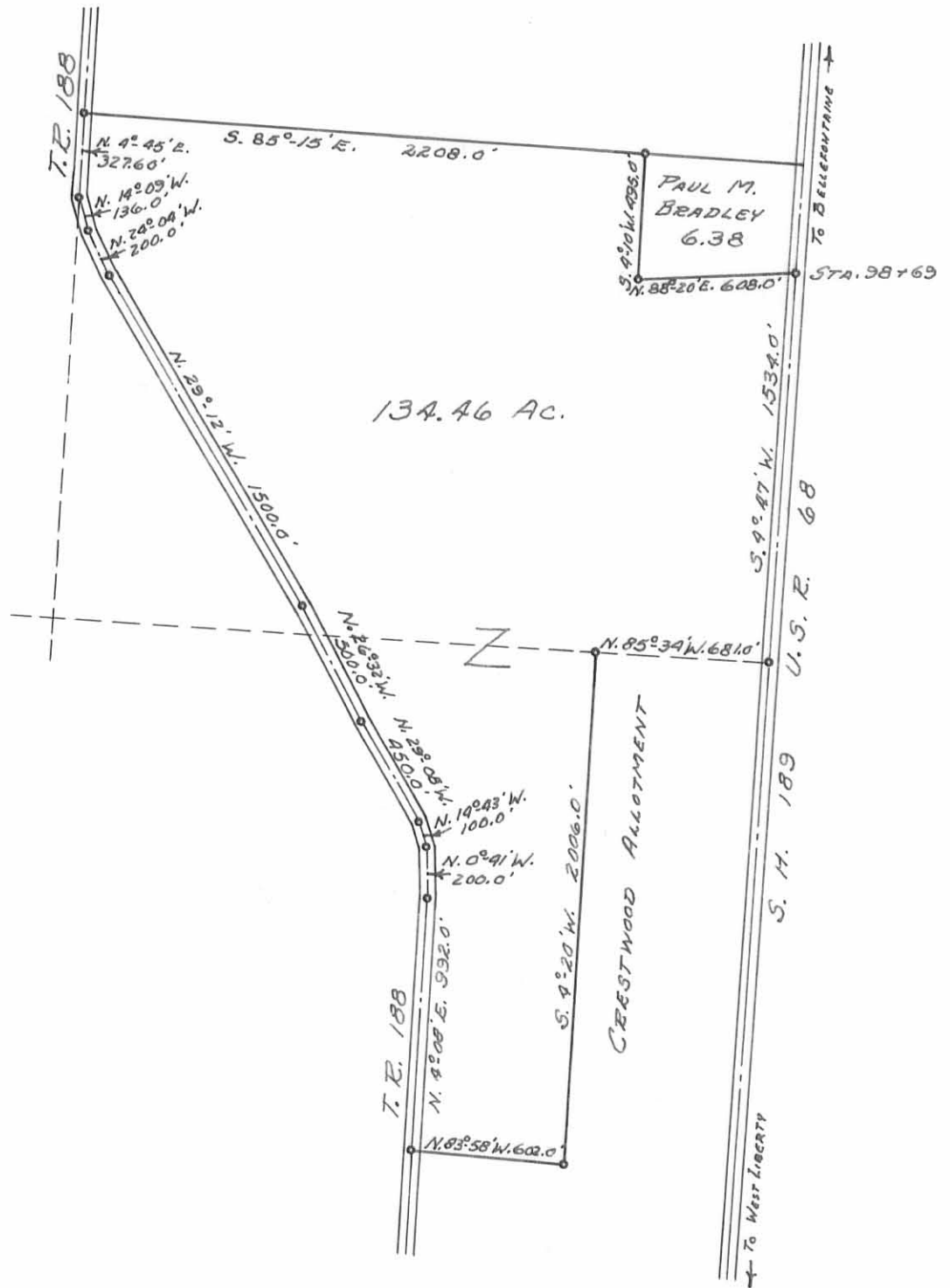
This is the same tracts now on the Logan County Auditor's Duplicate  
as a 96.79 acre tract and a 33.15 acre tract a total of 129.94 acres.

The new survey making 4.52 more acres.

cc  
Logan County Engineer.



3571  
6D-2



BERRY SURVEY  
 SECTION 35, TOWN 5, RANGE 13  
 LIBERTY TWP., LOGAN COUNTY, OHIO  
 SURVEYED BY F. F. WRIGHT - JUNE 1963  
 DRAWN BY D. E. G. - JULY 16, 1963  
 SCALE: 1" = 10 CHAINS = 660'

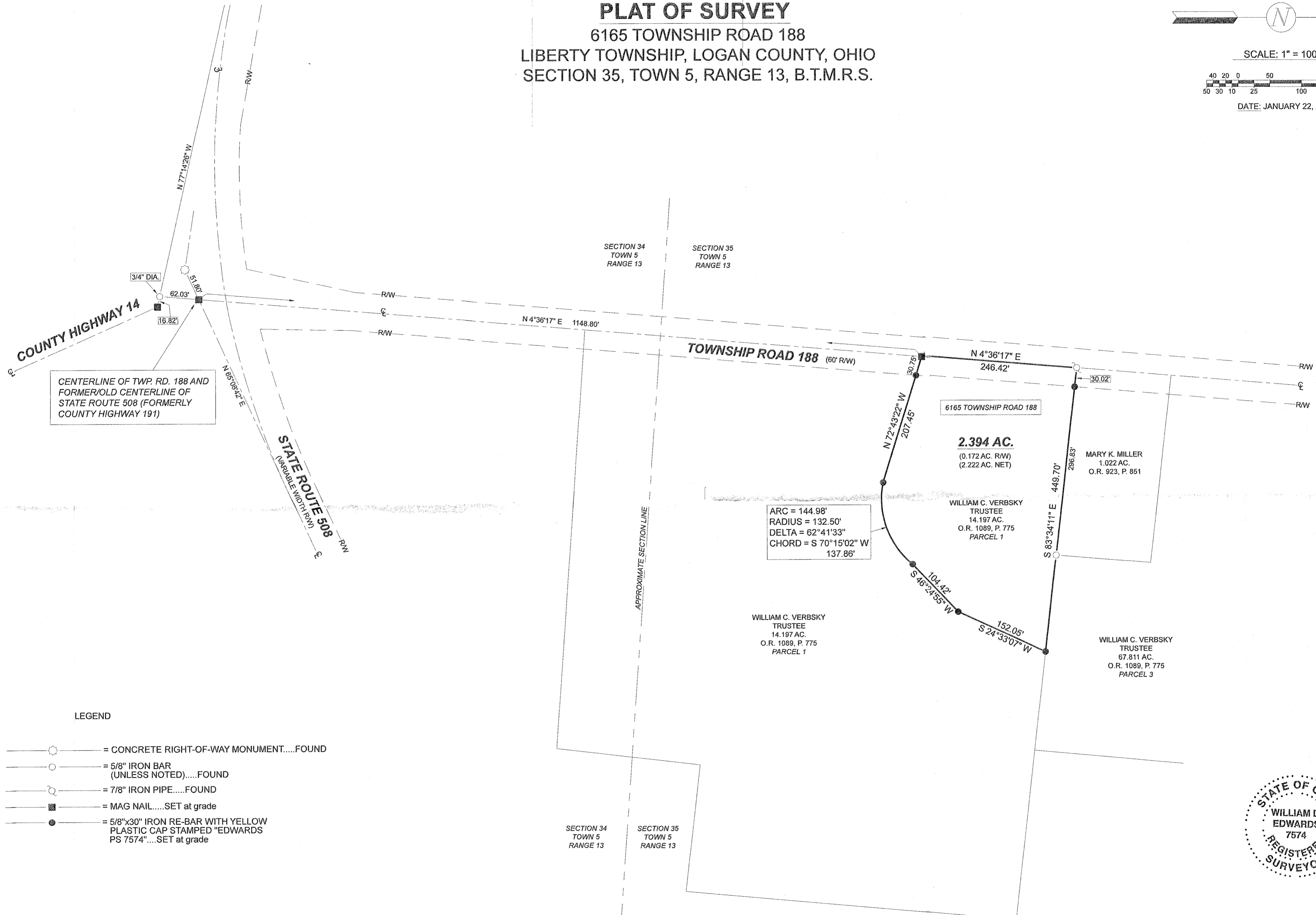
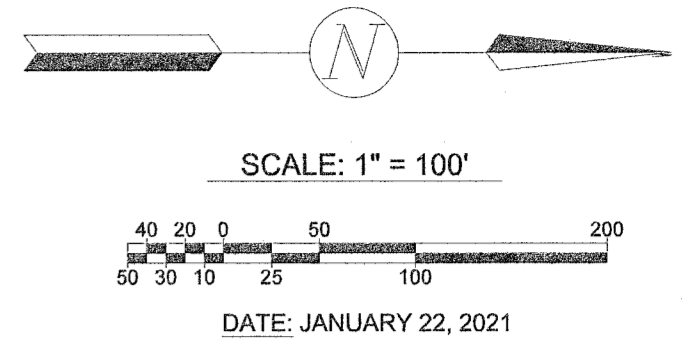
3571  
 UP  
 INDEXED ON MAP



2-1-21  
APPROVED

# PLAT OF SURVEY

6165 TOWNSHIP ROAD 188  
LIBERTY TOWNSHIP, LOGAN COUNTY, OHIO  
SECTION 35, TOWN 5, RANGE 13, B.T.M.R.S.



CENTERLINE OF TWP. RD. 188 AND FORMER/OLD CENTERLINE OF STATE ROUTE 508 (FORMERLY COUNTY HIGHWAY 191)

ARC = 144.98'  
RADIUS = 132.50'  
DELTA = 62°41'33"  
CHORD = S 70°15'02" W  
137.86'

### LEGEND

- = CONCRETE RIGHT-OF-WAY MONUMENT.....FOUND
- = 5/8" IRON BAR (UNLESS NOTED).....FOUND
- = 7/8" IRON PIPE.....FOUND
- = MAG NAIL.....SET at grade
- = 5/8"x30" IRON RE-BAR WITH YELLOW PLASTIC CAP STAMPED "EDWARDS PS 7574".....SET at grade

- NOTE:
1. BEARINGS ARE BASED ON THE CENTERLINE OF TOWNSHIP ROAD 188 PER AN ASSUMED BEARING OF N-4°36'17"-E.
  2. REFERENCES USED: DEED OF SUBJECT PREMISES, DEEDS OF ADJOINING PARCELS, PLATS OF SURVEYS IN THE VICINITY, COUNTY TAX AND AERIAL MAPS, STATE ROUTE 508 PLANS.
  3. THERE IS AN EXISTING HOUSE AND DRIVEWAY ON SUBJECT PROPERTY.



SURVEYED BY: *William D. Edwards*  
WILLIAM D. EDWARDS  
PROFESSIONAL SURVEYOR No. 7574  
110 SOUTH MAIN STREET  
URBANA, OHIO 43078  
(937)653-6508

INDEXED ON MAP  
3571

2-1-21  
✓ APPROVED



**EDWARDS SURVEYING**

110 South Main Street  
Urbana, Ohio 43078  
(937) 653-6508



**LEGAL DESCRIPTION FOR VERBSKY'S 2.394 ACRE TRACT**

Being situate in the State of Ohio, County of Logan, Township of Liberty, and being a part of Section 35, Town 5, Range 13, B.T.M.R.S., and being more particularly described as follows:

Beginning for reference at a Mag Nail set at the intersection of the centerline of Township Road 188 (60' right-of-way) and the former centerline of State Route 508 (variable width right-of-way) (formerly County Road 191), from which a 3/4" diameter iron bar found for reference bears S-4°36'17"-W, 62.03'(feet) and a concrete right-of-way monument found bears S-65°08'42"-W, 51.80'(feet);

Thence with the centerline of Township Road 188, N-4°36'17"-E, 1148.80'(feet) to a Mag Nail set at the **PRINCIPLE PLACE OF BEGINNING** for the tract hereinafter described;

Thence continuing with the centerline of Township Road 188, N-4°36'17"-E, 246.42'(feet) to a 7/8" diameter iron pipe found at the Southwest corner of a 1.022 acre tract conveyed to Mary K. Miller by deed recorded in Official Record 923, Page 851;

thence with the South line of the 1.022 acre tract and with a South line of a 67.811 acre tract conveyed to William C. Verbsky, Trustee, by deed recorded in Official Record 1089, Page 775, Parcel 3, S-83°34'11"-E, 449.70'(feet) to an iron bar set, passing for reference an iron bar set on the right-of-way line of Township Road 188 at 30.02'(feet) and a 5/8" diameter iron bar found at 296.83'(feet);

thence S-24°33'07"-W, 152.05'(feet) to an iron bar set;

thence S-46°24'55"-W, 104.42'(feet) to an iron bar set;

thence with a curve to the right having a Delta of 62°41'33" and a Radius of 132.50'(feet), an Arc distance of 144.98'(feet) to an iron bar set, the Chord of which bears S-70°15'02"-W, 137.86'(feet);

thence N-72°43'22"-W, 207.45'(feet) to the place of beginning passing for reference an iron bar set on the right-of-way line of Township Road 188 at 176.70'(feet).

Containing 2.394 acres, 0.172 acre of which is within the Road right-of-way, but being subject to the rights of all legal highways and all easements of record.

Being a part of a 14.197 acre tract conveyed to William C. Verbsky, Trustee, by deed recorded in Official Record 1089, Page 775, Parcel 1, of the Logan County Records.

The foregoing description prepared by and in accordance with a survey by William D. Edwards, Professional surveyor No. 7574, January 22, 2021. All iron bars set are 5/8"x30" iron re-bar with a yellow plastic cap stamped "EDWARDS PS 7574". Bearings are based on the centerline of Township Road 188 per an assumed bearing of N-4°36'17"-E.



*William D. Edwards*  
William D. Edwards, P.S. 7574

INDEXED ON MAP  
3571